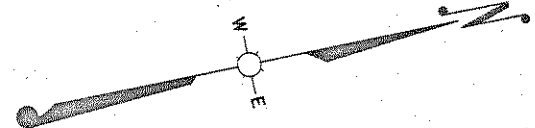


DIVISION	PROJECT	SHEET NUMBER	TOTAL SHEETS
4	T0189(2)	8	41

50189(5) 7 21

STA. 125+00-155+00 LT. & RT.
12 POSTS REQ'D. FOR R/W



STA. 127+00-144+00
OBLITERATE OLD RD. LT.
182 STA.

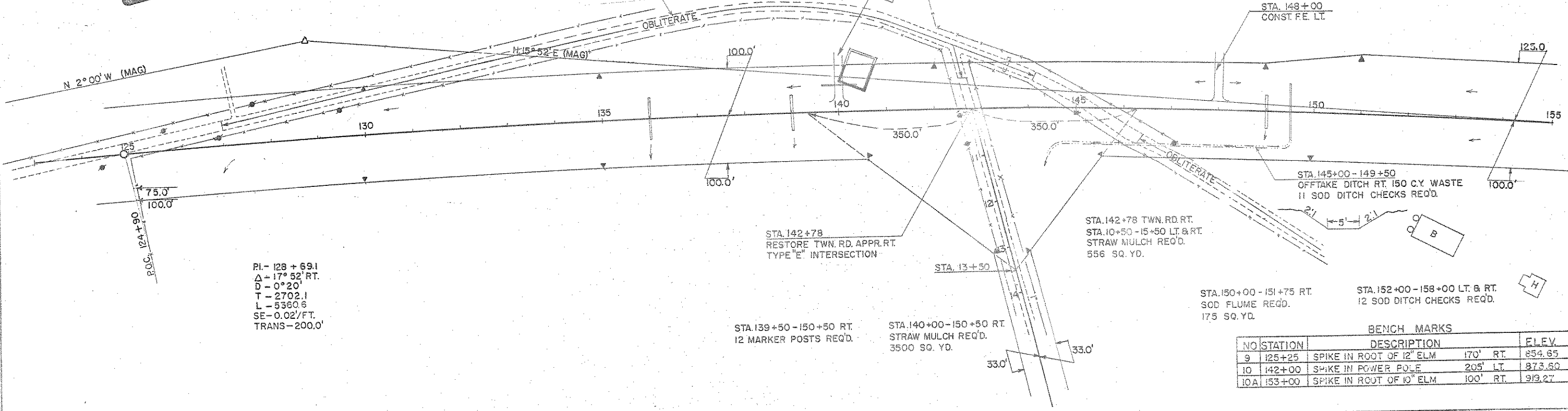
STA. 140+00 RESTORE P.E. LT.
1-24" X 76" C.M.C.P. REQ'D.

STA. 149+50 - 151+20 LT.
SOD FLUME REQ'D.
170 SQ. YD.

STA. 148+00
CONST. F.E. LT.

$\Delta 15^\circ 52' E$ (MAG)

$N 2^\circ 00' W$ (MAG)



PI - 128 + 69.1
 Δ - $17^\circ 52'$ RT.
D - $0^\circ 20'$
T - 2702.1
L - 5360.6
SE - 0.02/FT.
TRANS - 200.0'

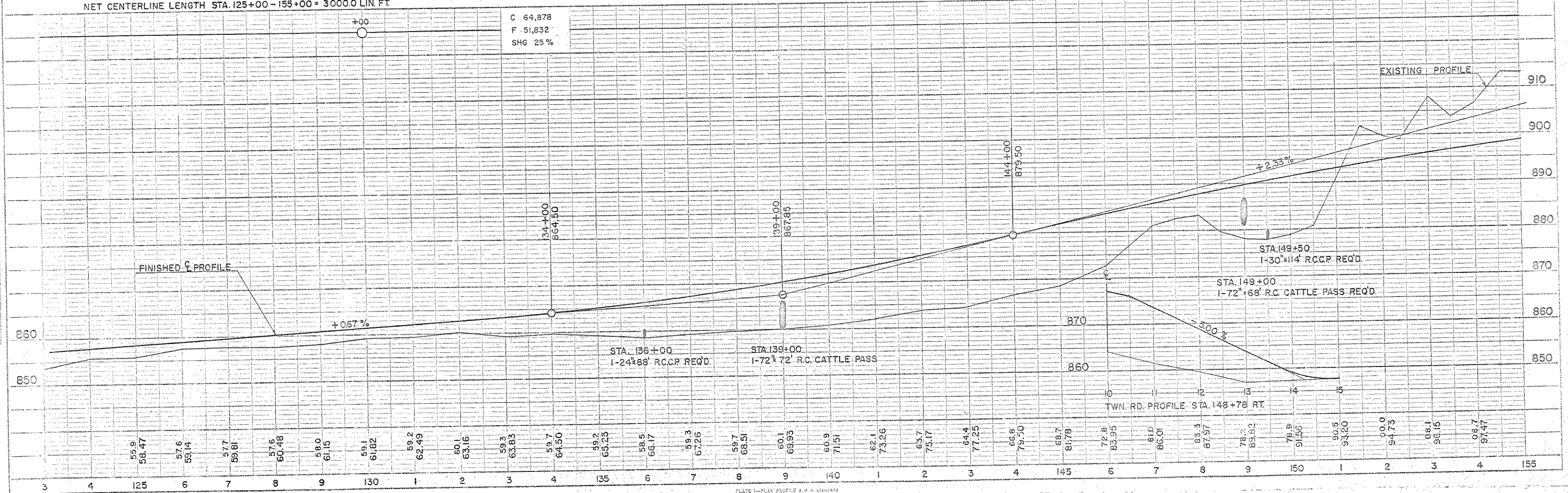
STA. 150+00 - 151+75 RT.
SOD FLUME REQ'D.
175 SQ. YD.

STA. 152+00 - 158+00 LT. & RT.
12 SOD DITCH CHECKS REQ'D.

BENCH MARKS			
NO	STATION	DESCRIPTION	ELEV.
9	125+25	SPIKE IN ROOT OF 12" ELM	170' RT. 854.65
10	142+00	SPIKE IN POWER POLE	205' LT. 873.60
10A	153+00	SPIKE IN ROOT OF 10" ELM	100' RT. 919.27

NET CENTERLINE LENGTH STA. 125+00-155+00 = 3000.0 LIN. FT.

C 64,878
F 51,832
SHG 25%



TWN. RD. PROFILE STA. 148+78 RT.