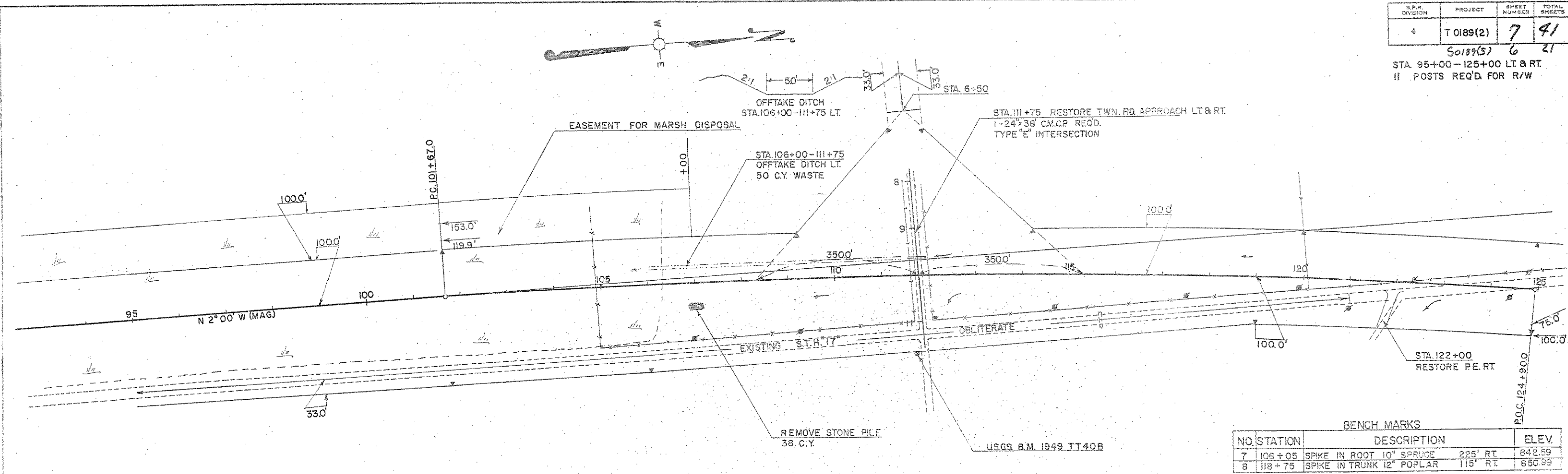


S.P.A. DIVISION	PROJECT	SHEET NUMBER	TOTAL SHEETS
4	T 0189(2)	7	41

50189(2) 6 21  
 STA. 95+00-125+00 LT & RT  
 II POSTS REQ'D FOR R/W

PLAN  
 CHECKED BY: J.S.K.  
 DRAWN BY: M.S.H.  
 DATE: 8/5/76  
 NO. 8576



BENCH MARKS			
NO.	STATION	DESCRIPTION	ELEV.
7	105+05	SPIKE IN ROOT 10" SPRUCE 225' RT.	842.59
8	118+75	SPIKE IN TRUNK 12" POPLAR 115' RT.	850.99

NET CENTERLINE LENGTH STA. 95+00-125+00 = 30000 LIN. FT.

PROFILE  
 CHECKED BY: J.S.K.  
 DRAWN BY: M.S.H.  
 DATE: 8/5/76  
 NO. 8576

