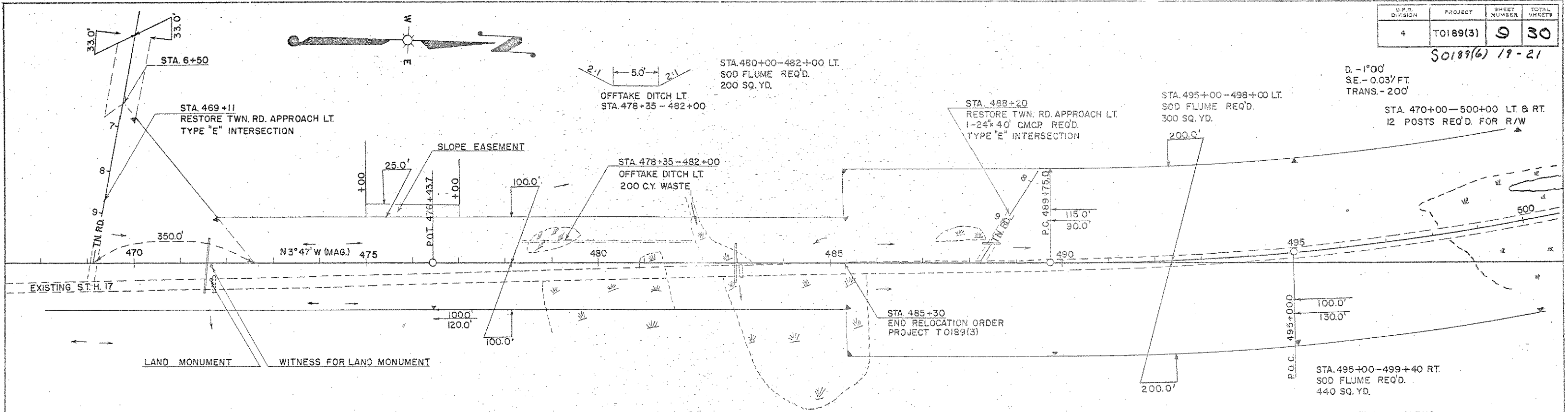


S.P.R. DIVISION	PROJECT	SHEET NUMBER	TOTAL SHEETS
4	T0189(3)	9	30

S0189(6) 19-21

D. -1°00'
SE. - 0.037 FT.
TRANS. - 200'

DATE	2/26/88
BY	W.S.H.
CHECKED	M.S.H.
APPROVED	
PROJECT	NO. 8544
NOTE	ALIGNED CHECKED BY
PLAN	NO. 8544



BENCH MARKS			
NO.	STATION	DESCRIPTION	ELEV.
37	469+25	SPIKE IN 12" WHITE BIRCH 140' RT	1001.89
38	482+00	" " 7" POPLAR 100 RT	997.14
39	490+20	" " 8" " 60 RT	991.08

NET CENTERLINE LENGTH STA. 470+00-500+00 = 3000.0 LIN. FT.

DATE	2/26/88
BY	E.Y.
CHECKED	E.M.J.
APPROVED	
PROJECT	NO. 8544
NOTE	ALIGNED CHECKED BY
PROFILE	NO. 8544

