

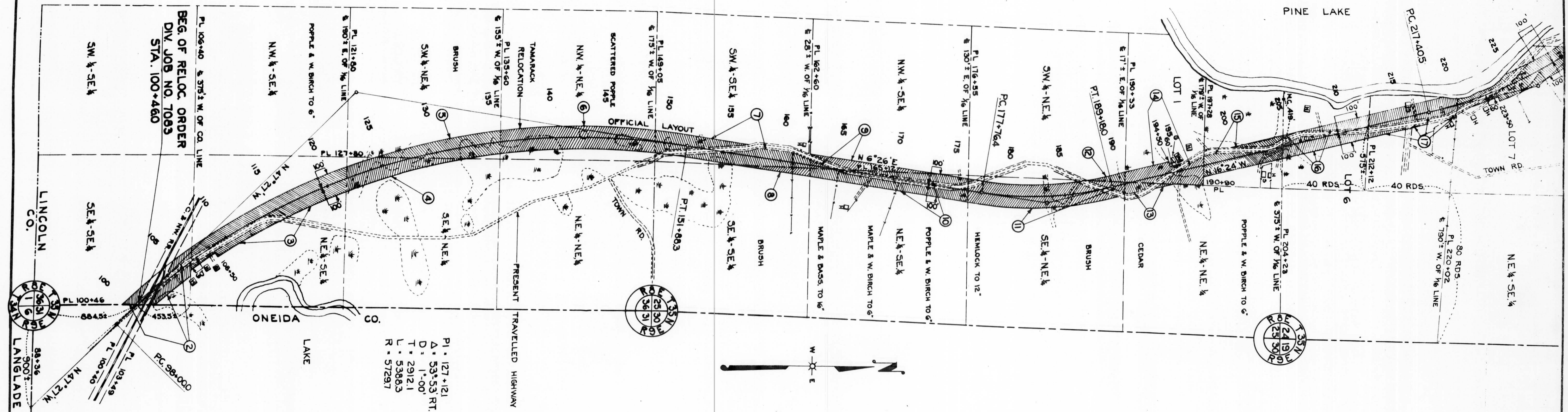
FED. ROAD DIST. NO.	STATE	STATE PROJ. NO.	SHEET NO.	TOTAL SHEETS
4	WISC.	7083	4	

DIVISION JOB NO. 7083

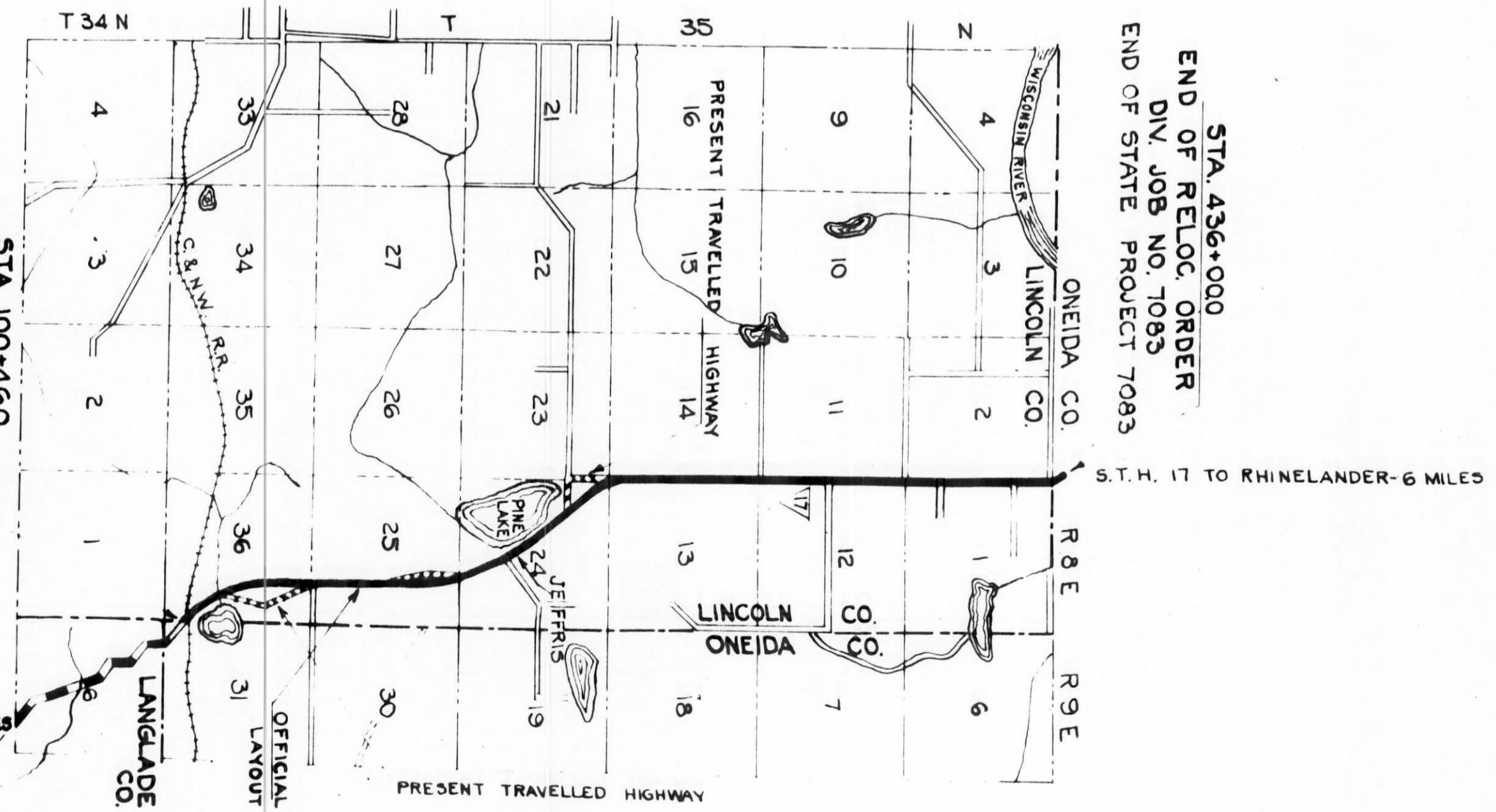
P1. 227+184
 Δ = 28°43' LT.
 D = 1°30'
 T = 9779
 L = 1914.4
 R = 38918

P1. 183+550
 Δ = 22°50' LT.
 D = 2°00'
 T = 5786
 L = 11416
 R = 28649

TOWN OF HARRISON



P1. 127+121
 Δ = 53°53' RT.
 D = 1°00'
 T = 2912.1
 L = 3388.3
 R = 57297



STA. 100+460
 BEG. OF RELOC. ORDER
 DIV. JOB NO. 7083
 LOCATION SKETCH
 SCALE 0 1/2 1 MILES

STA. 436+000
 END OF RELOC. ORDER
 DIV. JOB NO. 7083
 END OF STATE PROJECT 7083
 S.T.H. 17 TO RHINELANDER-6 MILES

REVISED 11-9-44
 REVISED 2-16-39

PLAT OF RIGHT OF WAY REQUIRED
 DIVISION JOB NO. 7083
 PARRISH - RHINELANDER ROAD
 S.T.H. NO. 17 LINCOLN AND ONEIDA COUNTIES
 SCALE 0 200' 400' 800'
 100' 300'