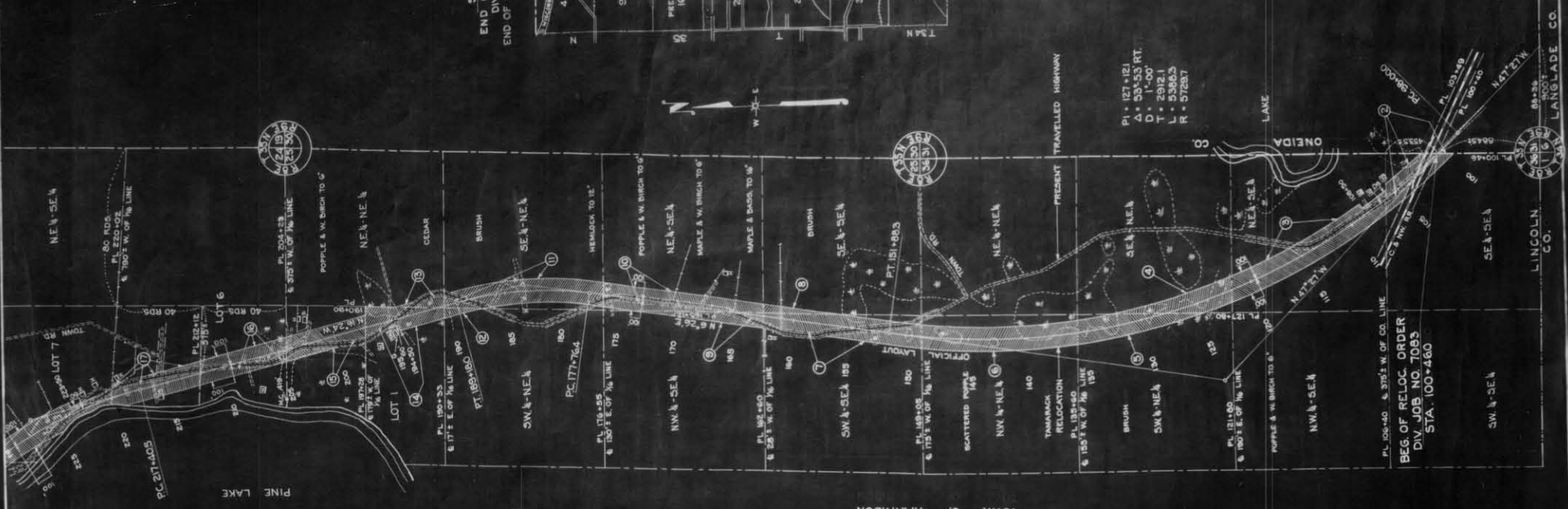


DATE	BY	CHKD	APP'D
12/1/50	W.C. HARRISON		

DIVISION JOB NO. 7083

PI • 227+184
 Δ • 25°43' LT.
 D • 1"=30'
 T • 9779
 L • 1914.4
 R • 3619.5

PI • 183+550
 Δ • 22°-50' LT.
 D • 2"=30'
 T • 57186
 L • 1141.6
 R • 2864.9



BEG. OF RELOC. ORDER
 DIV. JOB NO. 7083
 STA. 100+460

PI • 127+121
 Δ • 53°53' RT.
 D • 1"=100'
 T • 2912.1
 L • 5386.3
 R • 57287

PLAT OF RIGHT OF WAY REQUIRED
 DIVISION JOB NO. 7083
 PARRISH - RHINELANDER ROAD
 S.T.H. NO. 17 LINCOLN AND ONEIDA COUNTIES



STA. 456+000
 END OF RELOC. ORDER
 DIV. JOB NO. 7083
 END OF STATE PROJECT 7083



STA. 100+460
 BEG. OF RELOC. ORDER
 DIV. JOB NO. 7083
 LOCATION SKETCH

