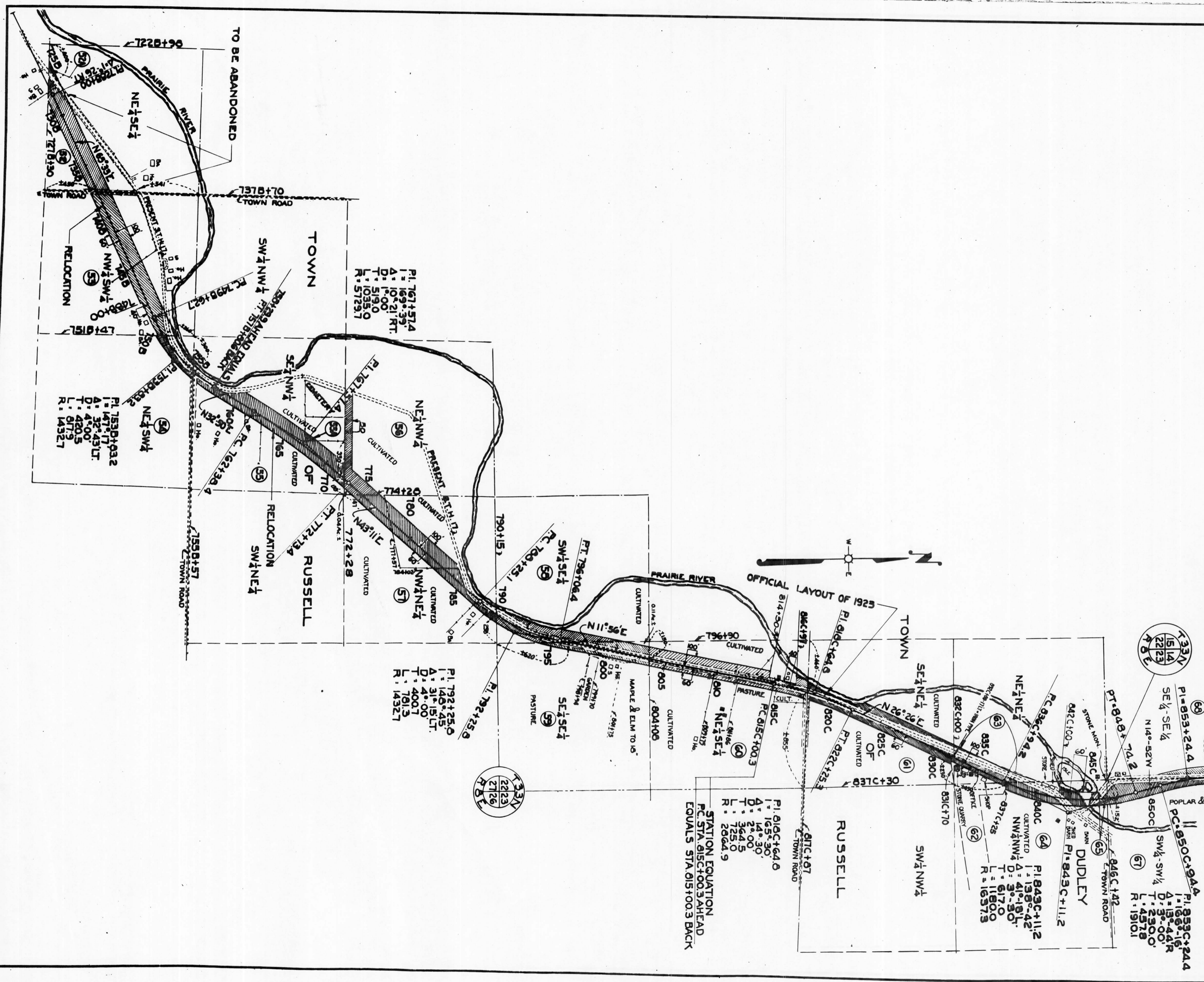


FED. ROAD DIST. NO.	STATE	STATE PROJ. NO.	SHEET NO.	TOTAL SHEETS
4	WISC.	7056	7	

DIVISION JOB NO. 7056



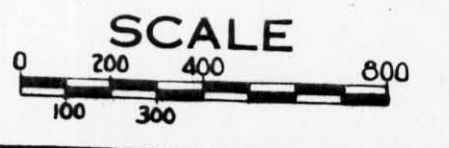
END OF RELOCATION ORDER
 DIV. JOB NO. 7056
 STA. 859C+351

END OF STATE PROJ. NO. 7056
 STA. 856C+051

FIELD BOOKS: 7866-7887 & 7913
 DRAWN BY: M.B.B. FEB. 1937
 COMPUTED BY: M.B.B.
 CHECKED BY: W.E.T.

REVISED JUNE 25, 1937

PLAT OF RIGHT OF WAY REQUIRED
 DIVISION JOB NO. 7056
 MERRILL-DUDLEY ROAD
 S.T.H. NO. 17 LINCOLN COUNTY



STATION EQUATION
 PC STA. 815C+003 AHEAD
 EQUALS STA. 815+003 BACK

PI. 767+574
 I. = 169.59
 A. = 10°-21' RT.
 T. = 519.0
 L. = 1035.0
 R. = 5729.7

PI. 753P+932
 I. = 147.77
 A. = 32°-43' LT.
 T. = 420.5
 L. = 817.9
 R. = 1432.7

PI. 792+250
 I. = 140.45
 A. = 31°-15' LT.
 T. = 400.7
 L. = 781.3
 R. = 1432.7

PI. 853+244
 I. = 151.4
 A. = 22°-23'
 T. = 481.8
 L. = 952.2

PI. 853C+244
 I. = 132.44
 A. = 19°-00'
 D. = 30.00
 T. = 230.0
 L. = 457.8
 R. = 1910.1