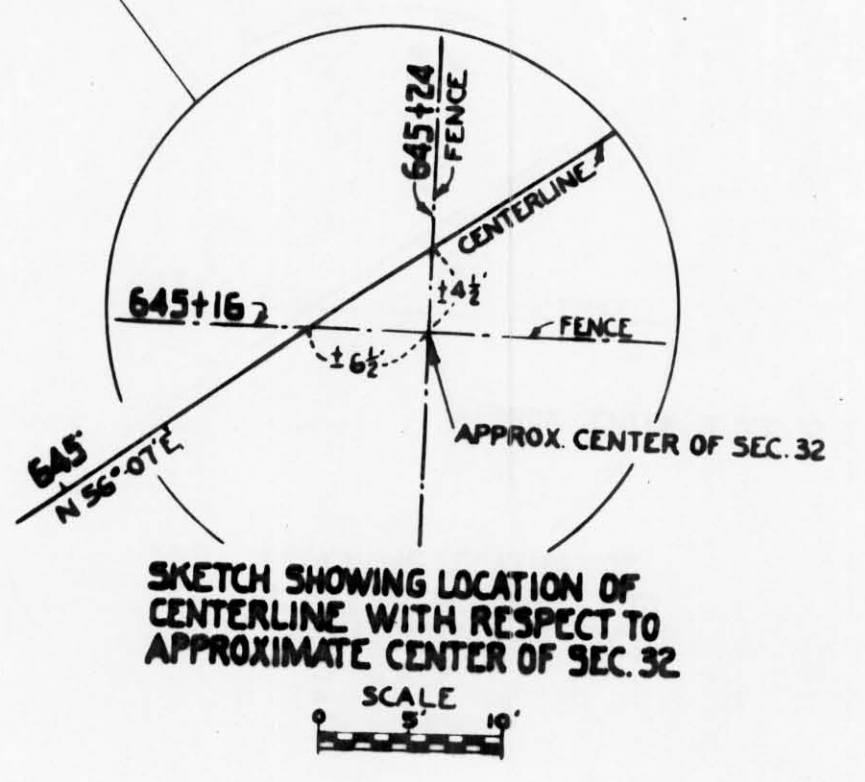
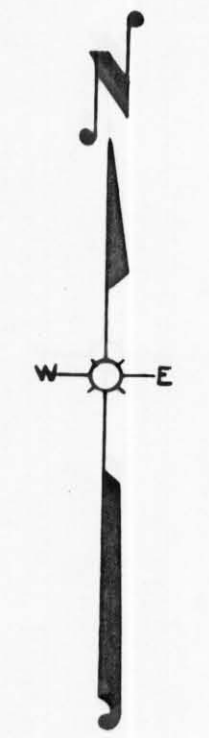
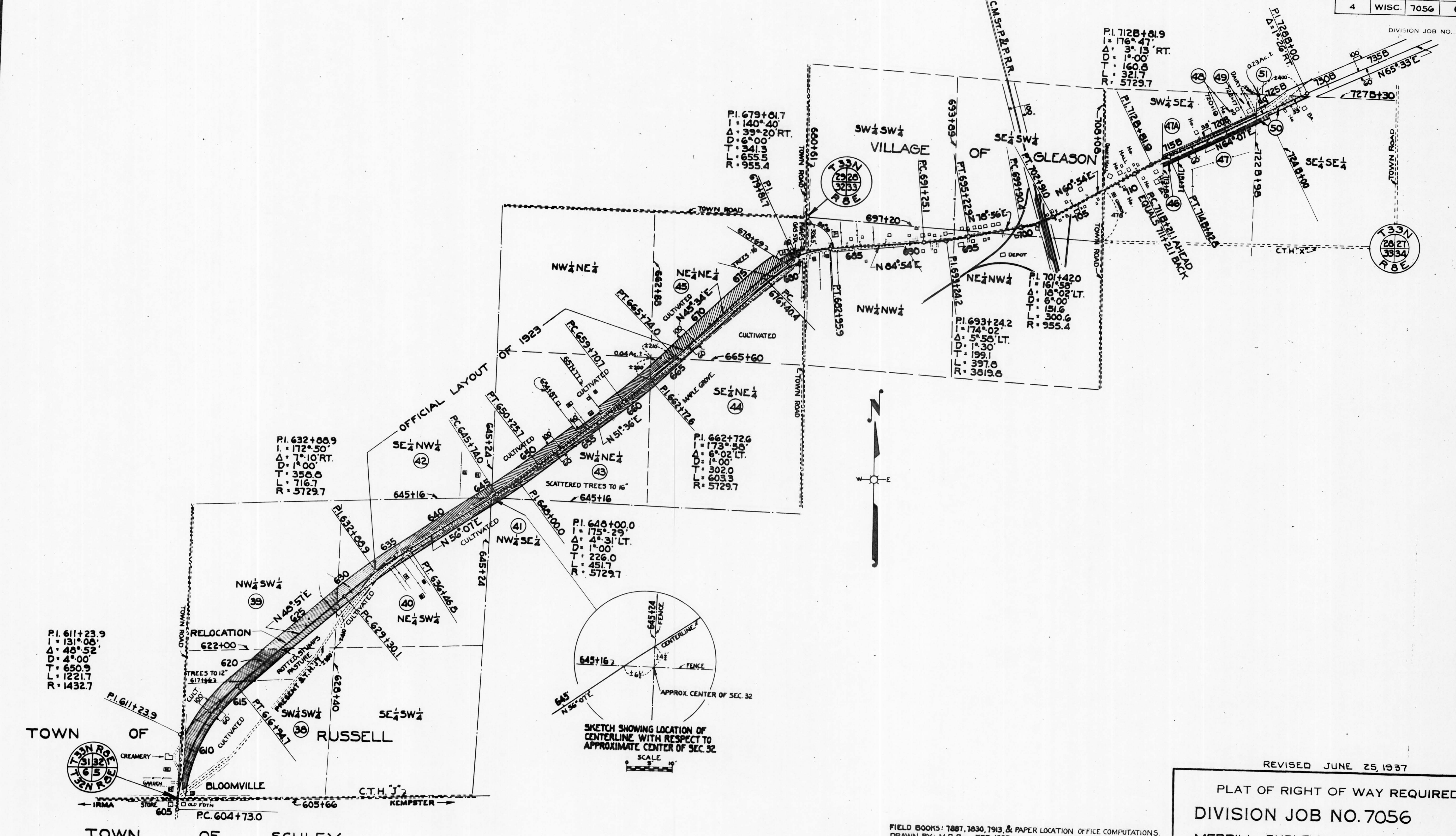


FED. ROAD DIST. NO.	STATE	STATE PROJ. NO.	SHEET NO.	TOTAL SHEETS
4	WISC.	7056	8	

DIVISION JOB NO. 7056



P.I. 611+23.9
 I = 131° 08'
 Δ = 48° 52'
 D = 4° 00'
 T = 650.9
 L = 1221.7
 R = 1432.7

P.I. 632+00.9
 I = 172° 50'
 Δ = 7° 10' RT.
 D = 1° 00'
 T = 350.0
 L = 716.7
 R = 5729.7

P.I. 640+00.0
 I = 175° 29'
 Δ = 4° 31' LT.
 D = 1° 00'
 T = 226.0
 L = 451.7
 R = 5729.7

P.I. 662+72.6
 I = 173° 50'
 Δ = 6° 02' LT.
 D = 1° 00'
 T = 302.0
 L = 603.3
 R = 5729.7

P.I. 693+24.2
 I = 174° 02'
 Δ = 5° 58' LT.
 D = 1° 30'
 T = 199.1
 L = 397.0
 R = 3819.0

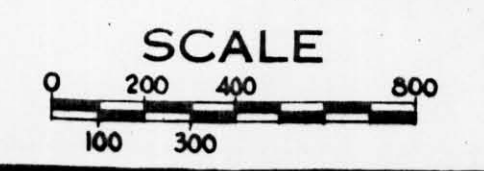
P.I. 701+42.0
 I = 161° 58'
 Δ = 16° 02' LT.
 D = 6° 00'
 T = 151.6
 L = 300.6
 R = 955.4

P.I. 679+01.7
 I = 140° 40'
 Δ = 39° 20' RT.
 D = 6° 00'
 T = 341.3
 L = 655.5
 R = 955.4

P.I. 712B+81.9
 I = 176° 47' RT.
 Δ = 3° 17'
 D = 1° 00'
 T = 160.0
 L = 321.7
 R = 5729.7

REVISED JUNE 25, 1937

PLAT OF RIGHT OF WAY REQUIRED
 DIVISION JOB NO. 7056
 MERRILL - DUDLEY ROAD
 ST.H.NO. 17 LINCOLN COUNTY



FIELD BOOKS: 7887, 7830, 7913, & PAPER LOCATION OFFICE COMPUTATIONS
 DRAWN BY: M.B.B. FEB. 1937
 COMPUTED BY: M.B.B.
 CHECKED BY: D.H.F. & W.E.T.