

FED. ROAD DIST. NO.	STATE	STATE PROJ. NO.	SHEET NO.	TOTAL SHEETS
4	WISC.	7056	4	

DIVISION JOB NO. 7056

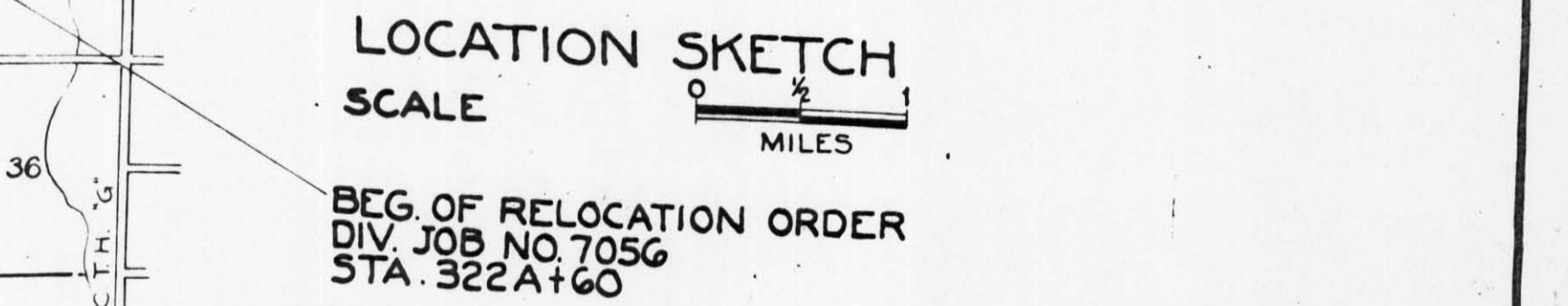
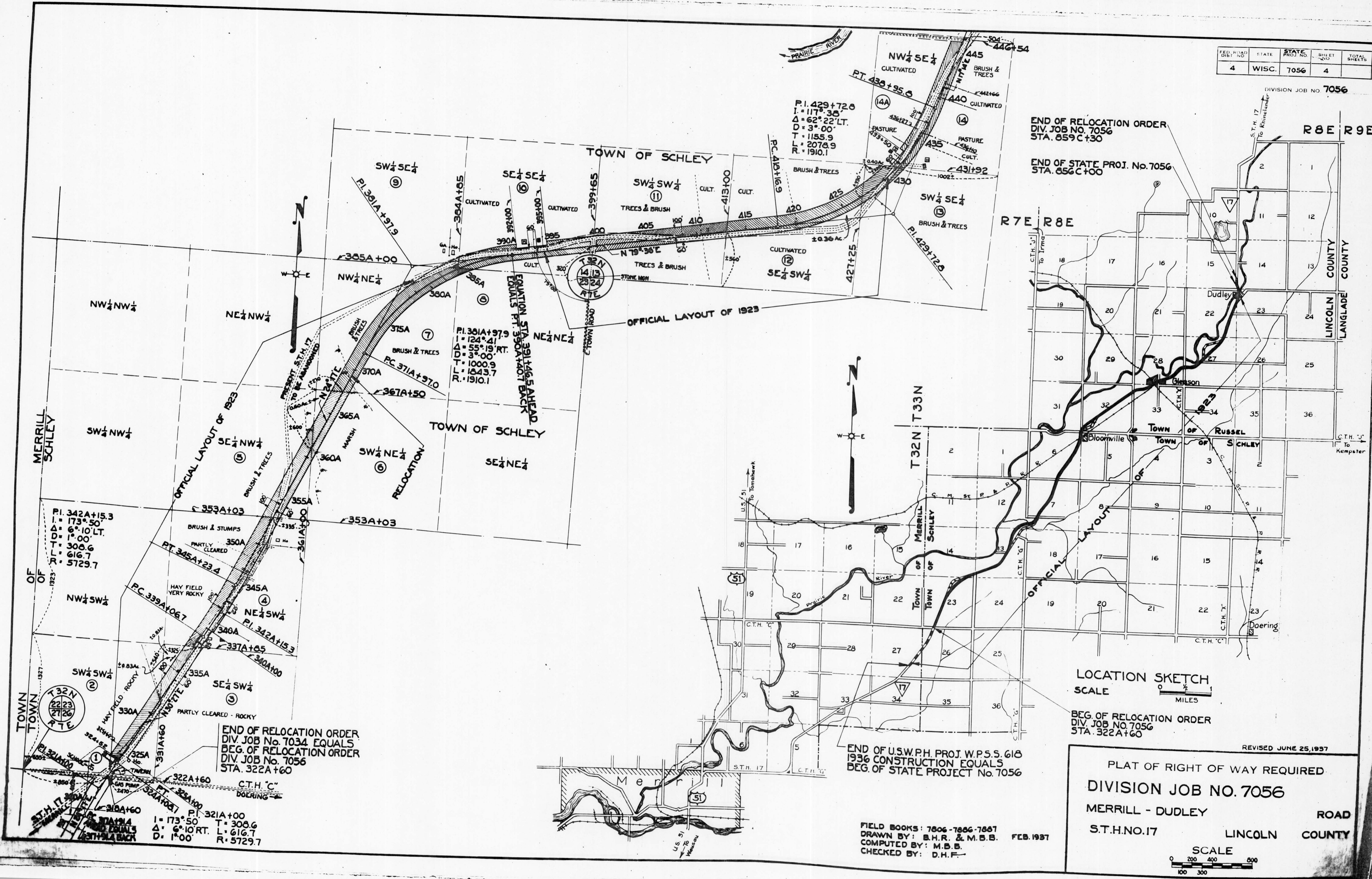
END OF RELOCATION ORDER
DIV. JOB NO. 7056
STA. 659C+30

END OF STATE PROJ. No. 7056
STA. 656C+00

R8E R9E

R7E R8E

LINCOLN COUNTY
LANGLADE COUNTY

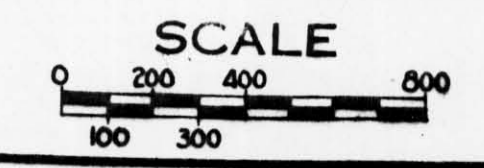


BEG. OF RELOCATION ORDER
DIV. JOB NO. 7056
STA. 322A+60

END OF U.S.W.P.H. PROJ. W.P.S.S. 618
1936 CONSTRUCTION EQUALS
BEG. OF STATE PROJECT No. 7056

REVISED JUNE 25, 1937

PLAT OF RIGHT OF WAY REQUIRED
DIVISION JOB NO. 7056
MERRILL - DUDLEY ROAD
S.T.H. NO. 17 LINCOLN COUNTY



FIELD BOOKS: 7806-7806-7867
DRAWN BY: B.H.R. & M.B.B. FEB. 1937
COMPUTED BY: M.B.B.
CHECKED BY: D.H.F.

END OF RELOCATION ORDER
DIV. JOB No. 7034 EQUALS
BEG. OF RELOCATION ORDER
DIV. JOB No. 7056
STA. 322A+60

PI. 321A+00
I = 173° 50' T = 308.6
Δ = 6° 10' RT. L = 616.7
D = 1° 00' R = 5729.7

PI. 301A+97.9
I = 124° 41' T = 1000.9
Δ = 55° 19' RT. L = 1843.7
D = 3° 00' R = 1910.1

PI. 429+72.0
I = 117° 35' T = 1155.9
Δ = 62° 22' LT. L = 2078.9
D = 3° 00' R = 1910.1

PI. 342A+15.3
I = 173° 50' T = 308.6
Δ = 6° 10' LT. L = 616.7
D = 1° 00' R = 5729.7