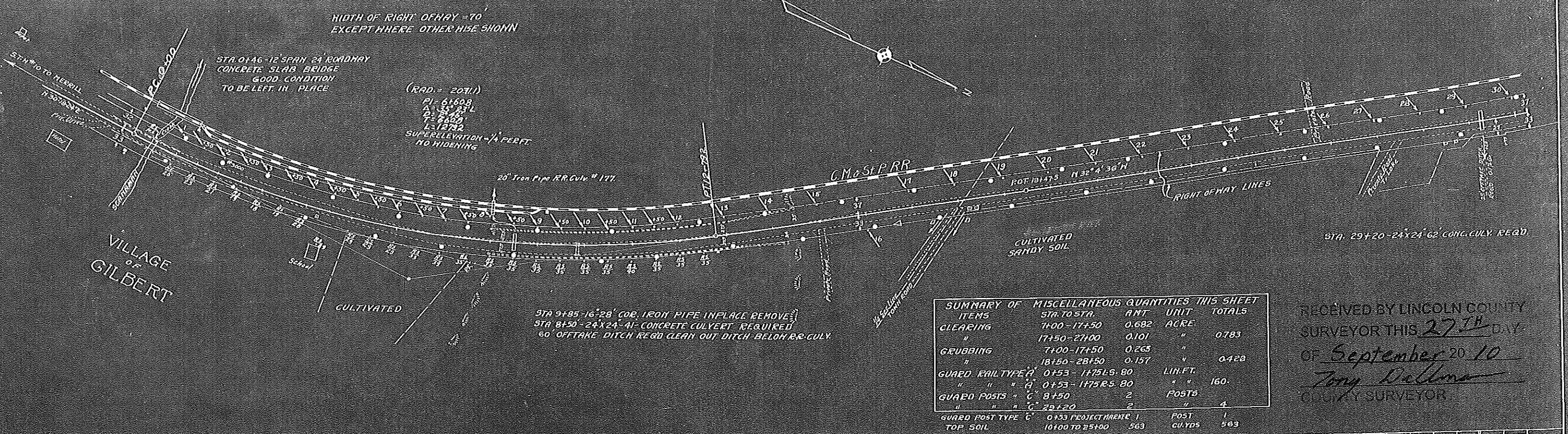


AS-BLT 2 STH "10" 1929?

FED. ROAD DIST. NO.	STATE	AREA AID PROJ. NO.	SHEET NO.	TOTAL SHEETS
4	WIS.	451A	4	37

DIVISION JOB NO. 7102

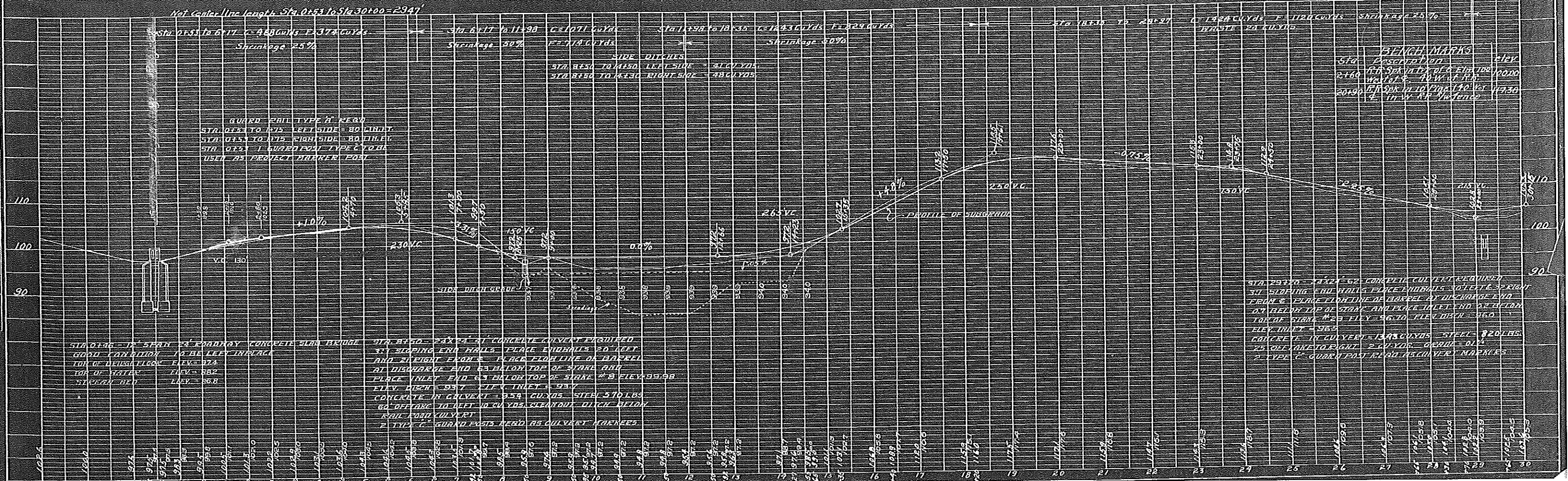


SUMMARY OF MISCELLANEOUS QUANTITIES THIS SHEET

ITEMS	STA. TO STA.	AMT.	UNIT	TOTALS
CLEARING	1400-17450	0.682	ACRE	
"	17450-27100	0.101	"	0.783
GRUBBING	7100-17450	0.263	"	
"	18150-28450	0.157	"	0.420
GUARD RAIL TYPE A	0153-1175 L.S. 80		LINE FT.	
"	" " " 0153-1175 R.S. 80		"	160
GUARD POSTS " C	8+50	2	POSTS	
"	" " " 29+20	2	"	4
GUARD POST TYPE C	0+53 PROJECT MARKS	1	POST	
TOP SOIL	10100 TO 25100	563	CU YDS	563

RECEIVED BY LINCOLN COUNTY SURVEYOR THIS 27TH DAY OF September 20 10
 Tony Dellano
 COUNTY SURVEYOR

Not Center Line length Sta. 0+53 to Sta. 30+00 = 2947'



GUARD RAIL TYPE A READ
 STA. 0+53 TO 1175 LEFT SIDE = 80 LINE FT.
 STA. 0+53 TO 1175 RIGHT SIDE = 80 LINE FT.
 STA. 0+53 1 GUARD POST TYPE C TO BE
 USED AS PROJECT MARKER POST

STA. 0+46 - 12 SPAN 24' ROADWAY CONCRETE SLAB BRIDGE
 GOOD CONDITION TO BE LEFT IN PLACE
 TOP OF DECK FLOOR ELEV. = 97.4
 TOP OF WATER ELEV. = 98.2
 SURFACE BED ELEV. = 96.8

STA. 8+50 - 24x24' CONCRETE CULVERT REQUIRED
 31' SLOPING END WALLS PLACE ENDWALLS 20 FEET
 AND 21 FEET FROM PLACE ELEVATION OF BARREL
 AT DISCHARGE END 63' BELOW TOP OF STAKE #8
 PLACE INLET END 63' BELOW TOP OF STAKE #9 ELEV. 99.98
 ELEV. INLET = 99.7 ELEV. INLET = 99.7
 CONCRETE IN CULVERT = 354 CU YDS STEEL 510 LBS
 60' OFFTAKES TO LEFT 10 CU YDS CLEANOUT DITCH BEYOND
 RAIL ROAD CULVERT
 2 TYPE 'C' GUARD POSTS READ AS CULVERT MARKERS

STA. 29+20 - 24x24' CONCRETE CULVERT REQUIRED
 31' SLOPING END WALLS PLACE ENDWALLS 30 FEET 30 RIGHT
 FROM PLACE ELEVATION OF BARREL AT DISCHARGE END
 67' BELOW TOP OF STAKE #29 AND PLACE INLET END 67' FROM
 TOP OF STAKE #29 ELEV. 96.10 ELEV. INLET = 96.0
 ELEV. INLET = 96.3
 CONCRETE IN CULVERT = 1343 CU YDS STEEL 920 LBS
 25' OFFTAKES TO RIGHT 2 CU YDS CLEANOUT DITCH
 2 TYPE 'C' GUARD POST READ AS CULVERT MARKERS

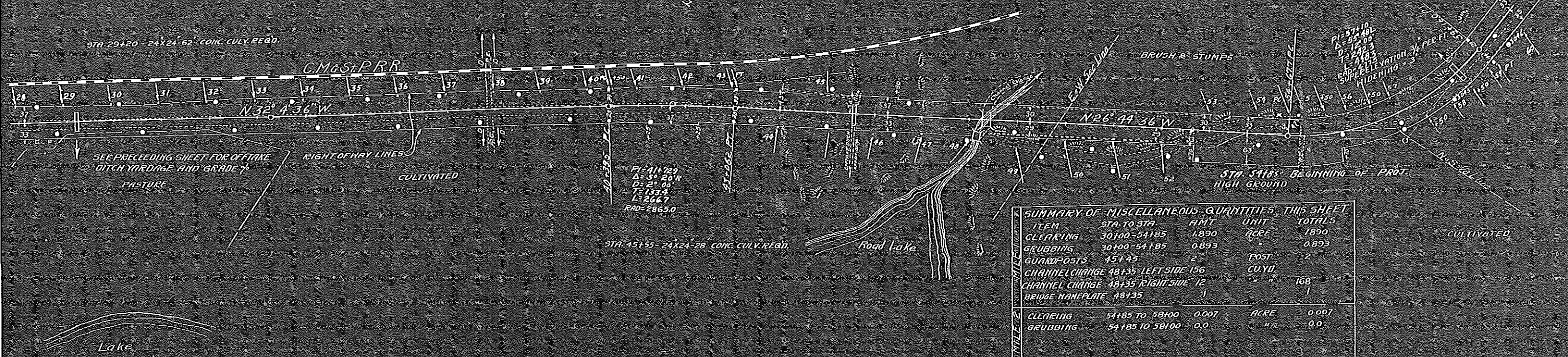
BENCH MARKS

Sta.	Description	Elev.
0+10	2' 6" x 6" x 6" CONCRETE	100.00
2+10	6" x 6" x 6" CONCRETE	100.00
20+90	6" x 6" x 6" CONCRETE	107.30

WIDTH OF RIGHTOFWAY = 70 FT. EXCEPT WHERE OTHERWISE SPECIFIED

STA 48135 REMOVE 16 CONG. SLAB SPAN BRIDGE IN PLACE
 STA. 48135 - 16' SPAN 28' ROADWAY SLAB BRIDGE REQD.
 150' CHANNEL CHANGE TO LEFT EXC. = 156 CU. YDS. 0.2% GRADE
 20' " " " " RIGHT EXC. = 12 CU. YDS.

STA. 58150 - 36' X 24' - 45' CONG. CULV. REQD.

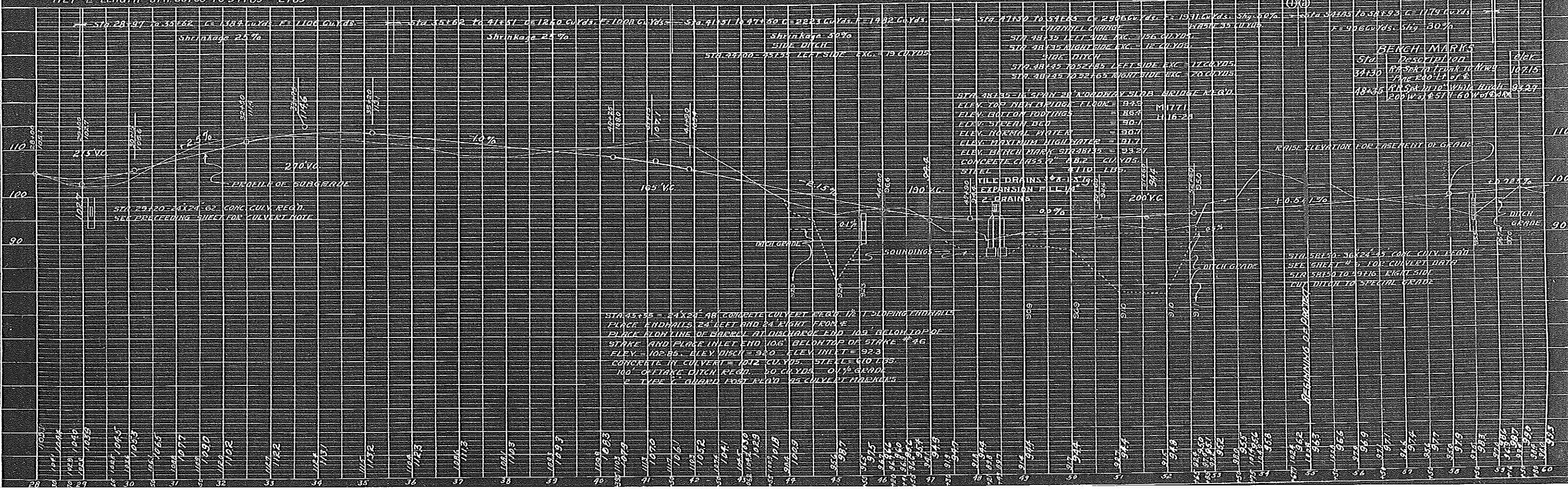


SUMMARY OF MISCELLANEOUS QUANTITIES THIS SHEET

ITEM	STA. TO STA.	AMT.	UNIT	TOTALS
CLEARING	30100-54185	1890	ACRE	1890
GRUBBING	30100-54185	0.893	"	0.893
GUARDPOSTS	45+45	2	POST	2
CHANNEL CHANGE	48135 LEFT SIDE	156	CU. YD.	
CHANNEL CHANGE	48135 RIGHT SIDE	12	"	168
BRIDGE NAMEPLATE	48135	1	"	1
MILE 2				
CLEARING	54185 TO 58100	0.007	ACRE	0.007
GRUBBING	54185 TO 58100	0.0	"	0.0

NET & LENGTH STA. 30100 TO 54185 = 2485'

MILE NET & LENGTH STA. 54185 TO 58100 = 315'



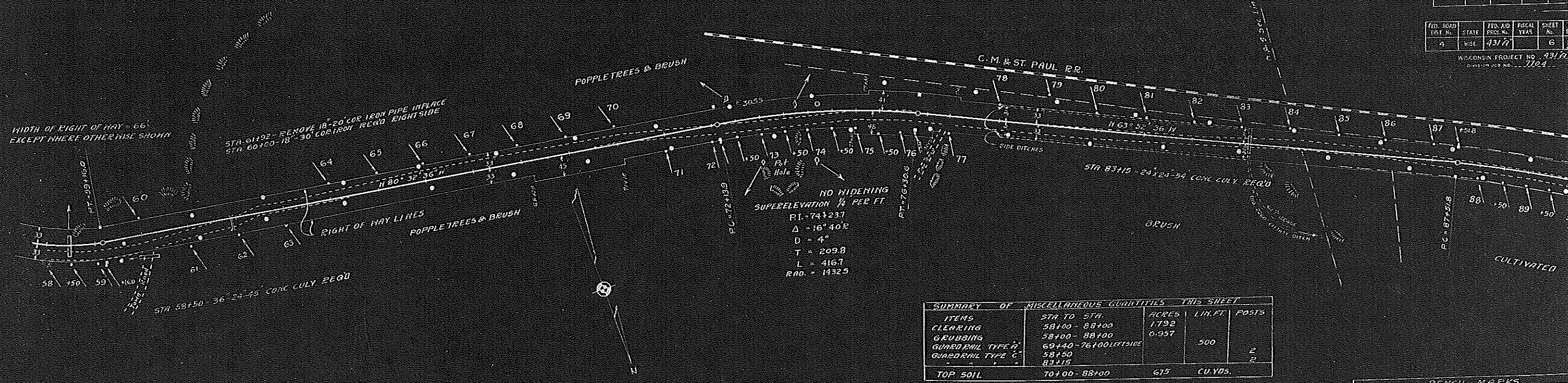
STA 45155 - 24' X 24' - 48' CONCRETE CULVERT FROM 12' T SLIDING END WALLS
 PLACE ENDWALLS 24' LEFT AND 24' RIGHT FROM S
 PLACE ALONGLINE OF BARREL AT DISCHARGE END 109' BELOW TOP OF
 STAKE AND PLACE INLET END 106' BELOW TOP OF STAKE # 46
 ELEV. = 102.85. DLEV. DISCH. = 92.0. ELEV. INLET = 92.3
 CONCRETE IN CULVERT = 1012 CU. YDS. STEEL = 910 LBS.
 100' OFFTAKE DITCH REQD. 50 CU. YDS. 0.1% GRADE
 2' TYPE C GUARD POST FROM 45' CULVERT INLET

NOTED: LOCATION CHECKED BY M. J. NOTER IN 1957
 PLAN. ROAD DIST. NO. 4 STATE WISC FED. AID PROJ. NO. 431A SHEET NO. 5 TOTAL SHEETS 37
 DIVISION JOB NO. 1702

NOTED: CROSS CHECKED BY M. J. NOTER IN 1957
 PLAN. ROAD DIST. NO. 4 STATE WISC FED. AID PROJ. NO. 431A SHEET NO. 5 TOTAL SHEETS 37
 DIVISION JOB NO. 1702

FED. ROAD DIST. NO.	STATE	FED. AID PROJ. NO.	FISCAL YEAR	SHEET NO.
4	WIS.	4317		6

WISCONSIN PROJECT NO. 4317
SECTION NO. 7104

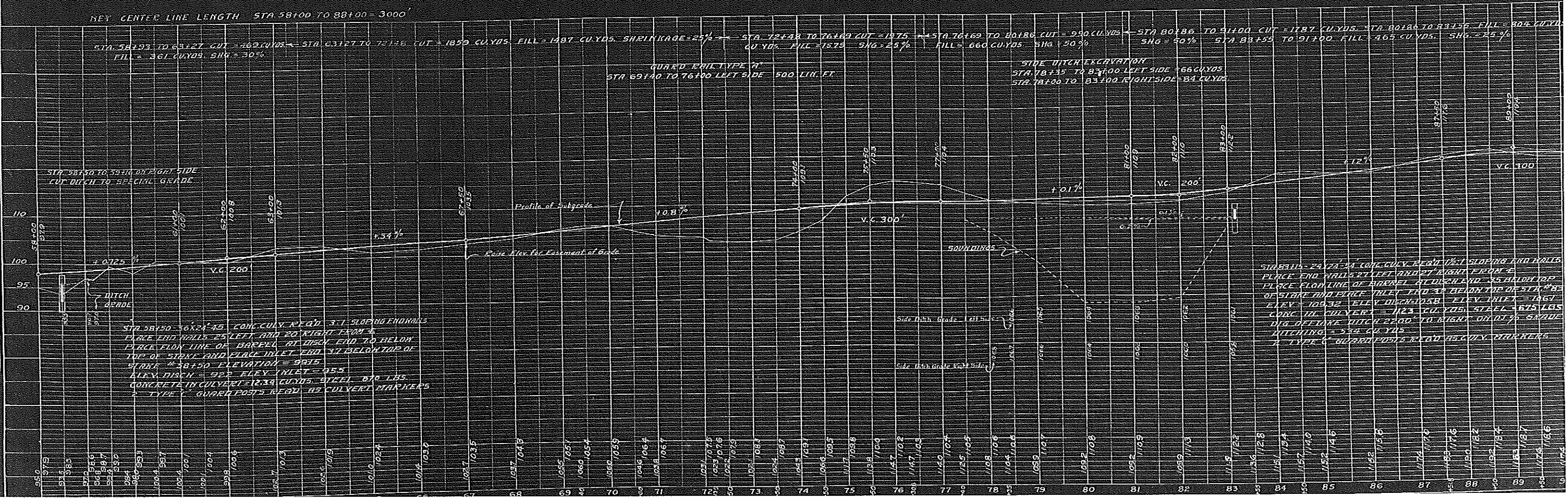


ITEMS	STA TO STA	ACRES	LIN. FT.	POSTS
CLEARING	58+00 - 88+00	1.792		
GRUBBING	58+00 - 88+00	0.957		
GUARD RAIL TYPE A	69+40 - 76+00 LEFT SIDE		500	
GUARD RAIL TYPE C	58+50 - 83+15			10
TOP SOIL	70+00 - 88+00	675	CU YDS.	

STATION	DESCRIPTION	ELEVATION
78+47	R.R. SPIKE IN 12\"/>	
85+	R.R. SPIKE IN 18\"/>	

PLAN
 DRAWN BY: G.C. Miller
 CHECKED BY: H. H. Hines
 DATE: 5/25/26
 NOTE: BOOK ALIGNMENT CHECKED BY: G.C. Miller
 NO. 3869

PROFILE
 DRAWN BY: G.C. Miller
 CHECKED BY: H. H. Hines
 DATE: 5/26/26
 NOTE: BOOK CHECKED BY: G.C. Miller
 NO. 3869

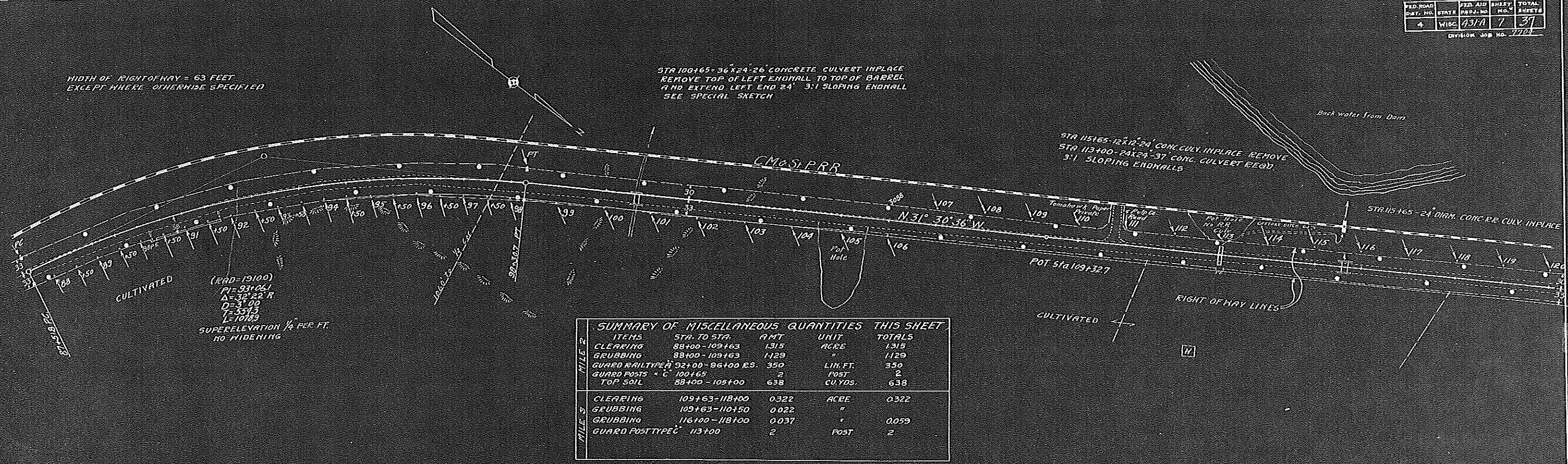


WIDTH OF RIGHT OF WAY = 63 FEET EXCEPT WHERE OTHERWISE SPECIFIED

STA 100+65 - 36x24-26 CONCRETE CULVERT IN PLACE REMOVE TOP OF LEFT ENDBALL TO TOP OF BARREL AND EXTEND LEFT END 24' 3" SLOPING ENDBALL SEE SPECIAL SKETCH

STA 115+65 - 12x12-24 CONG. CULV. IN PLACE REMOVE STA 113+00 - 24x24-37 CONG. CULVERT REQD. 3:1 SLOPING ENDBALLS

STA 115+65 - 24" DIAM. CONG. PIPE CULV. IN PLACE

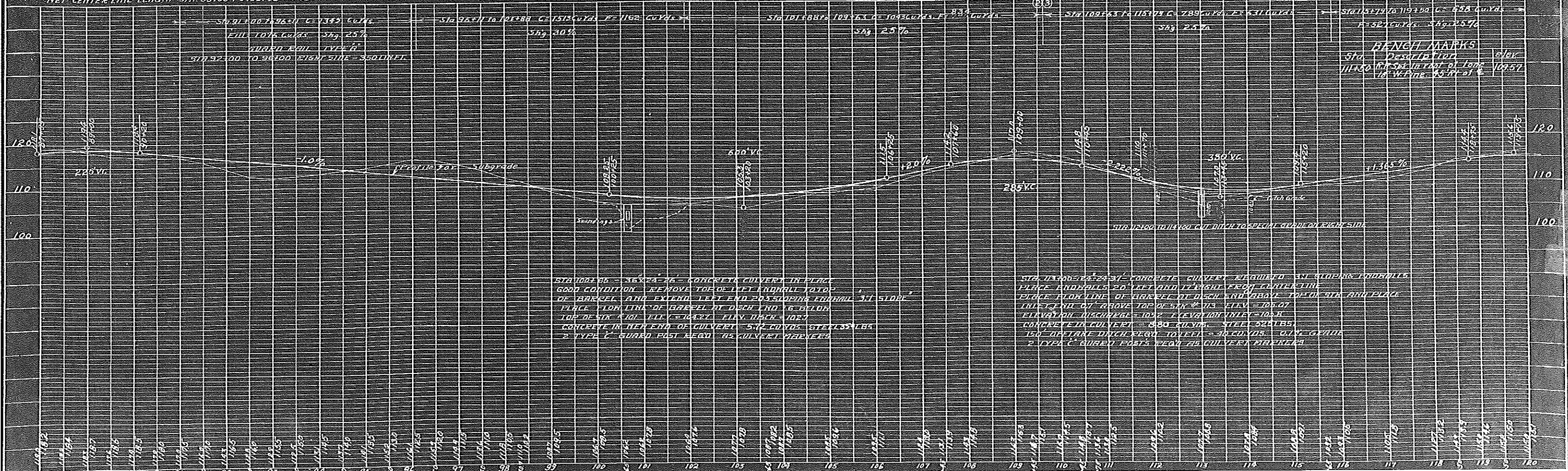


(RAD=19100)
PI=93+06.1
Δ=32°22'R
D=3'00
T=357.5
L=1010.3
SUPERELEVATION 1/4 PER FT.
NO. HIDERING

ITEMS	STA. TO STA.	AMT	UNIT	TOTALS
CLEARING	88+00-109+63	1.315	ACRE	1.315
GRUBBING	88+00-109+63	1.129	"	1.129
GUARD RAIL TYPE A	92+00-96+00 RS.	350	LIN. FT.	350
GUARD POSTS - C	100+65	2	POST	2
TOP SOIL	88+00-105+00	638	CU. YDS.	638
CLEARING	109+63-118+00	0.322	ACRE	0.322
GRUBBING	109+63-110+50	0.022	"	0.022
GRUBBING	116+00-118+00	0.037	"	0.037
GUARD POST TYPE C	113+00	2	POST	2

NET CENTER LINE LENGTH STA. 88+00 TO 109+63 = 2163'

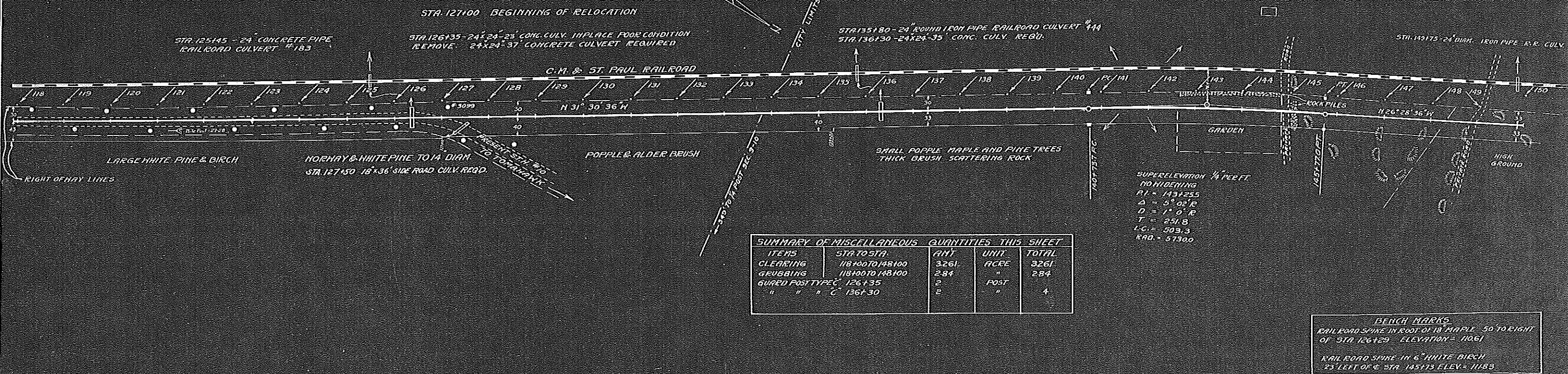
NET CENTER LINE LENGTH STA. 109+63 TO 118+00 = 837'



STA 100+65 - 36x24-26 CONCRETE CULVERT IN PLACE GOOD CONDITION REMOVE TOP OF LEFT ENDBALL TO TOP OF BARREL AND EXTEND LEFT END 24' 3" SLOPING ENDBALL 3:1 SLOPE PLACE TOP LINE OF BARREL AT DEPTH 16" BELOW TOP OF STR. 101+65 (ELEV. 108.7) FLY INCH = 108.7 CONCRETE IN REAR END OF CULVERT = 542 CU. YDS. STEEL 320 LBS. 2 TYPE C GUARD POSTS REQD. AS CULVERT MARKERS

STA 113+00 - 24x24-37 CONCRETE CULVERT REMOVED IN SLOPING ENDBALLS PLACE ENDBALLS 20' LEFT AND 17' RIGHT FROM CENTERLINE PLACE BOTTOM LINE OF BARREL AT DEPTH END ABOVE TOP OF STR. AND PLACE TOP LINE OF BARREL ABOVE TOP OF STR. ELEV. = 105.07 ELEVATION MISCHIEF = 105.2 ELEVATION END = 105.8 CONCRETE IN CULVERT = 380 CU. YDS. STEEL 320 LBS. 150' DIAM. DITCH REQD. 10' DEEP = 30 CU. YDS. ONLY GRADE 2 TYPE C GUARD POSTS REQD. AS CULVERT MARKERS

WIDTH OF RIGHT OF WAY = 63 FT.
 EXCEPT WHERE OTHERWISE SPECIFIED



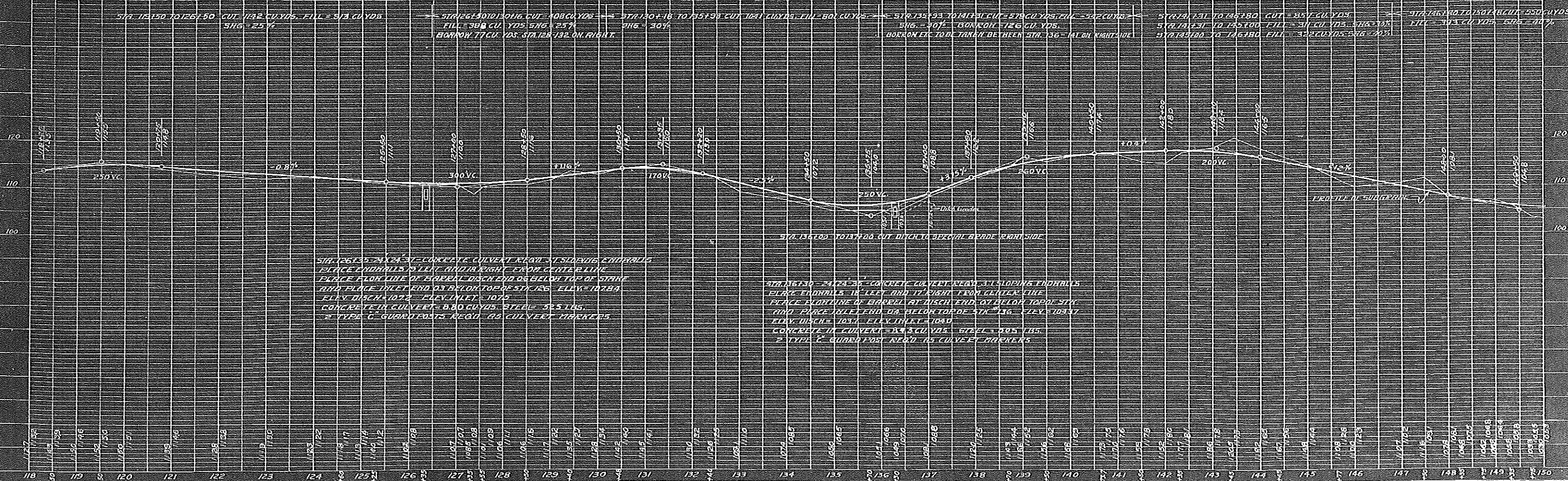
SUMMARY OF MISCELLANEOUS QUANTITIES THIS SHEET

ITEMS	STA TO STA.	AMT	UNIT	TOTAL
CLEARING	118+00 TO 148+00	3261	ACRE	3261
GRUBBING	118+00 TO 148+00	284	"	284
GUARD POST TYPE C	126+35	2	POST	2
"	" " " C 136+30	2	"	4

SUPERELEVATION 1/4 FEET
 NO HUBBERING
 P.I. = 143+255
 Δ = 5° 02' R
 D = 1° 0' R
 T = 251.8
 L.C. = 503.3
 R.R.O. = 57300

BENCH MARKS
 RAILROAD SPIKE IN ROOT OF 18" MAPLE 50 TO RIGHT OF STA 126+29 ELEVATION = 1061
 RAILROAD SPIKE IN 6" WHITE BIRCH 23' LEFT OF & STA 145+13 ELEV = 1183

NET CENTER LINE LENGTH STA 118+00 TO 148+00 = 3000'



STA 126+35 - 24" x 24" CONCRETE CULVERT FROM ST. SLOPING ENDBALLS PLACE ENDBALLS 5' LEFT AND 5' RIGHT FROM CENTER LINE PLACE BOTTOM LINE OF BARREL AT DISCH. END 5' BELOW TOP OF STAKE AND PLACE INLET END 35' BELOW TOP OF STA 126 ELEV = 10784 CONCRETE IN CULVERT = 8.80 CU YDS. STEEL = 325 LBS. 2 TYPE C GUARD POSTS REQ'D AS CULVERT MARKERS

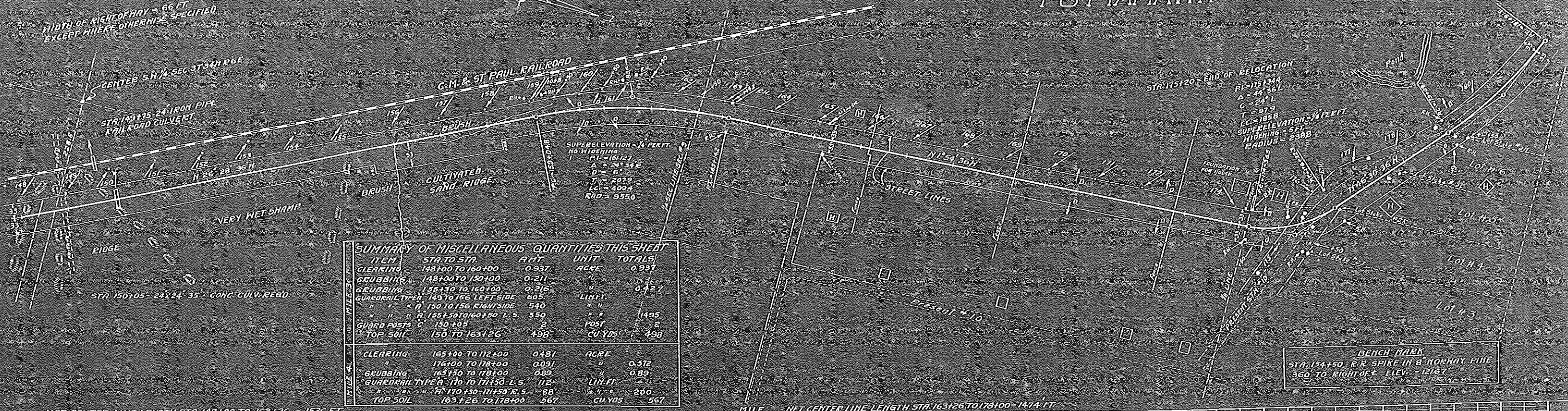
STA 126+30 - 24" x 24" CONCRETE CULVERT FROM ST. SLOPING ENDBALLS PLACE ENDBALLS 5' LEFT AND 5' RIGHT FROM CENTER LINE PLACE BOTTOM LINE OF BARREL AT DISCH. END 5' BELOW TOP OF STAKE AND PLACE INLET END 35' BELOW TOP OF STA 126 ELEV = 10841 CONCRETE IN CULVERT = 8.80 CU YDS. STEEL = 325 LBS. 2 TYPE C GUARD POSTS REQ'D AS CULVERT MARKERS

LOCATION OF THIS SHEET IN PROJECT
 SHEET NO. 8 OF 37
 DATE: 1954
 DRAWN BY: J. J. J.

NOTE: DOOR DIMENSIONS CHECKED BY J. J. J.
 NO. 3565
 STRUCTURE INDICATED BY CH. NO.

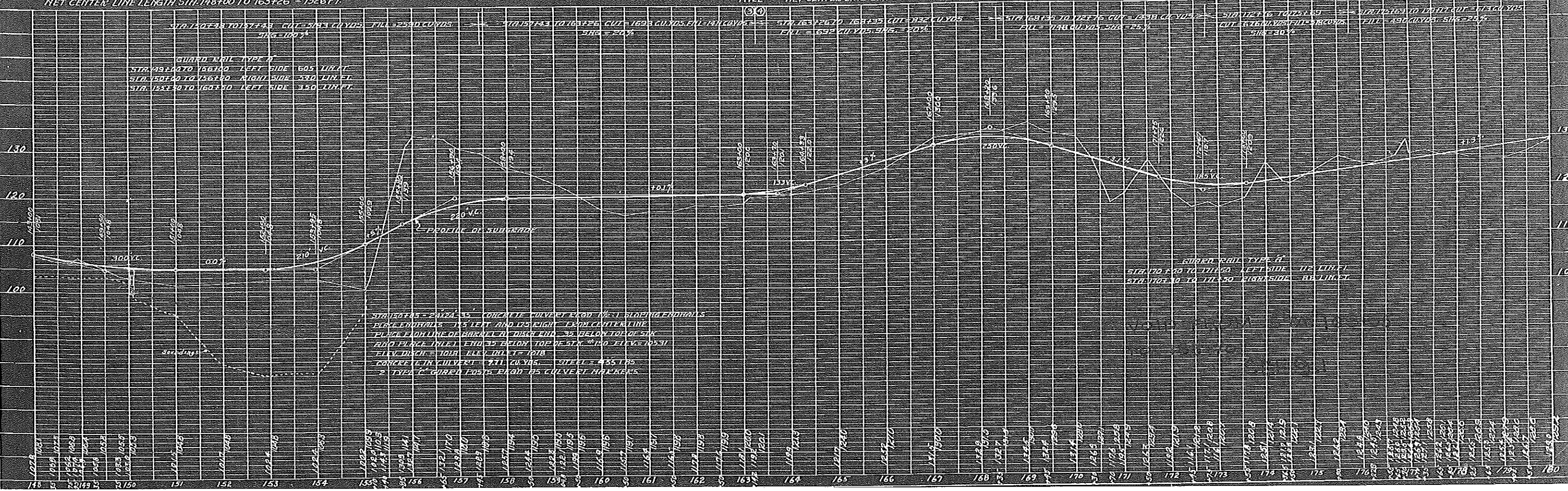
CITY OF TOMAHAWK

WIDTH OF RIGHT OF WAY = 66 FT.
EXCEPT WHERE OTHERWISE SPECIFIED



ITEM	STA TO STA	AMT	UNIT	TOTALS
CLEARING	148+00 TO 160+00	0.937	ACRE	0.937
GRUBBING	148+00 TO 150+00	0.211	"	"
GRUBBING	158+30 TO 160+00	0.216	"	0.427
GUARDRAIL TYPE A	145 TO 146 LEFT SIDE	605	LINE FT.	"
"	" 150 TO 156 RIGHT SIDE	540	"	1495
"	" 155 TO 160+00 L.S.	350	"	"
GUARD POSTS	150+05	2	POST	2
TOP SOIL	150 TO 163+26	498	CU YDS	498
CLEARING	165+00 TO 172+00	0.481	ACRE	"
"	176+00 TO 178+00	0.091	"	0.572
GRUBBING	165+50 TO 178+00	0.89	"	0.89
GUARDRAIL TYPE A	170 TO 171+50 L.S.	112	LINE FT.	"
"	" 170+30-171+50 R.S.	88	"	200
TOP SOIL	163+26 TO 178+00	567	CU YDS	567

BENCH MARK
STA. 154+50 - R.R. SPIKE IN 8" NORWAY PINE
360 TO RIGHT OF E. ELEV. = 121.67



SKETCH
 Showing
PROPOSED CHANGE OF GRADE & ALIGNMENT
 on the
MERRILL-WOODRUFF ROAD

FEDERAL AID PROJECT NO. 431A
 LINCOLN COUNTY
 WISCONSIN HIGHWAY COMMISSION
 MADISON WISCONSIN

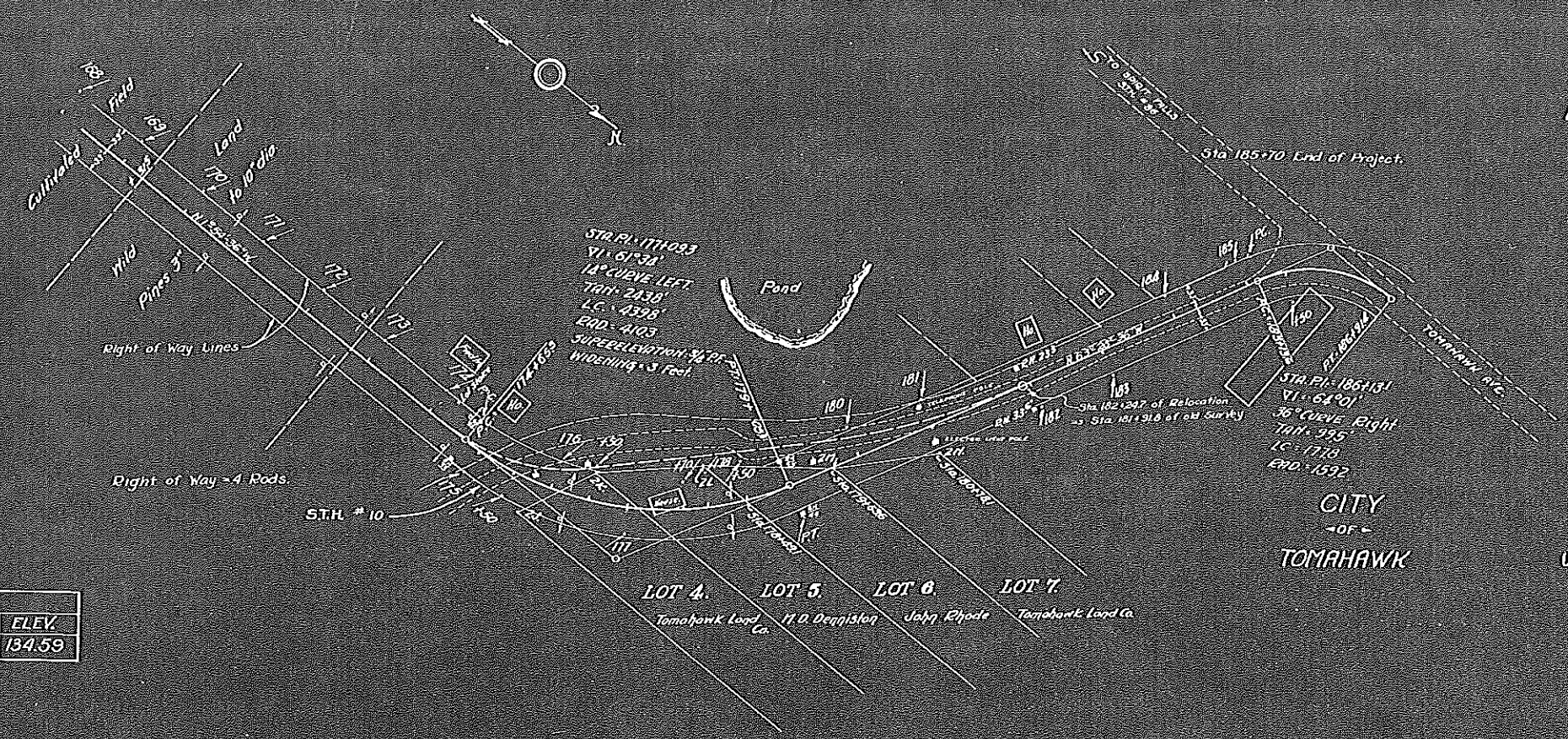
CORRECT: *H. M. Sargent*
 DIVISION ENGINEER
 RECOMMENDED FOR APPROVAL: *Chas. Seymour*
 DESIGN ENGINEER
 APPROVED: *J. D. Donaghey*
 5/19/26
 STATE HIGHWAY ENGINEER

U.S. DEPT. OF AGRICULTURE-BUREAU OF PUBLIC ROADS

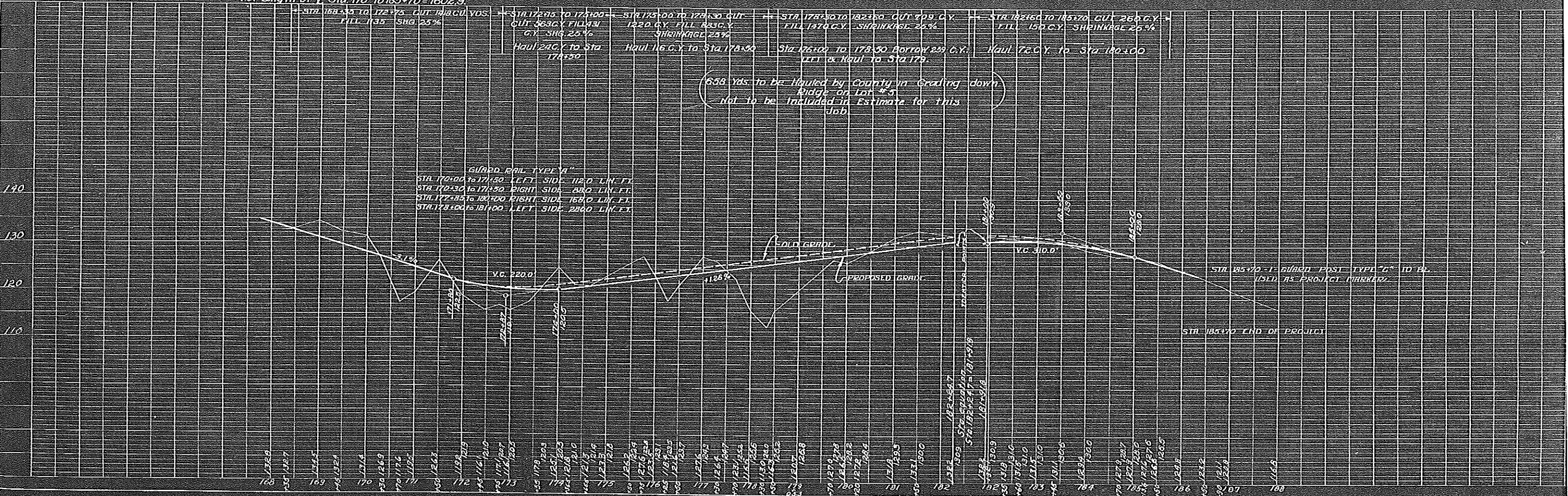
APPROVED: _____
 DISTRICT ENGINEER

PLAN
 DIVISION: _____
 PLOTTED: _____
 NOTE: BOOK ALIGNMENT CHECKED
 NO. 5999

BENCH MARKS		
STA.	DESCRIPTION	ELEV.
181+10	2nd SPONGE IRON TRUNK OF RAILROAD Pole 40' Right of C.	134.59

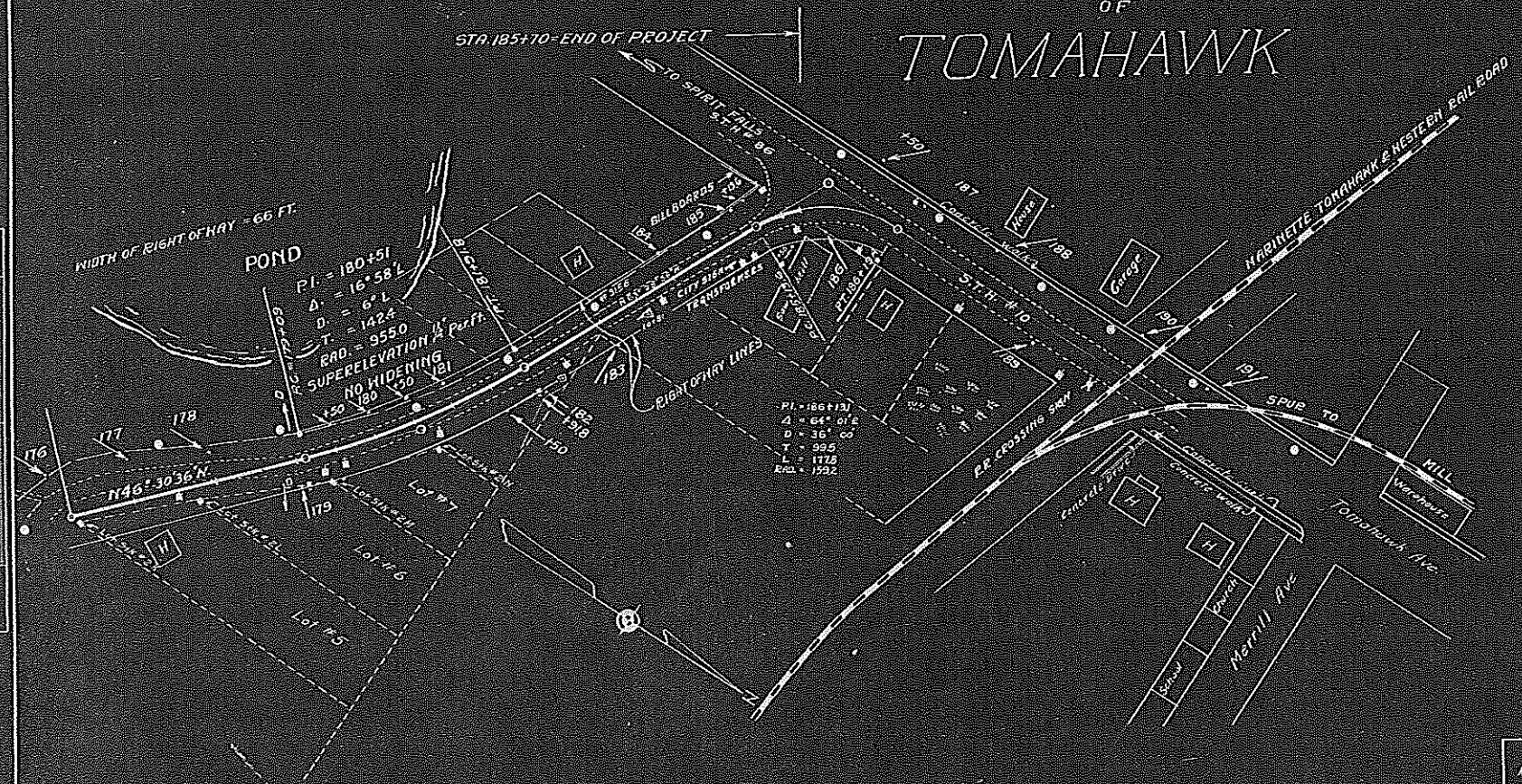


Net Length of Sta. 170 to 185+70 = 1602.9



PROFILE
 DIVISION: _____
 PLOTTED: _____
 NOTE: BOOK ELEVATION CHECKED
 NO. 5999
 STRUCTURE NOT TO BE CHANGED

CITY OF TOMAHAWK



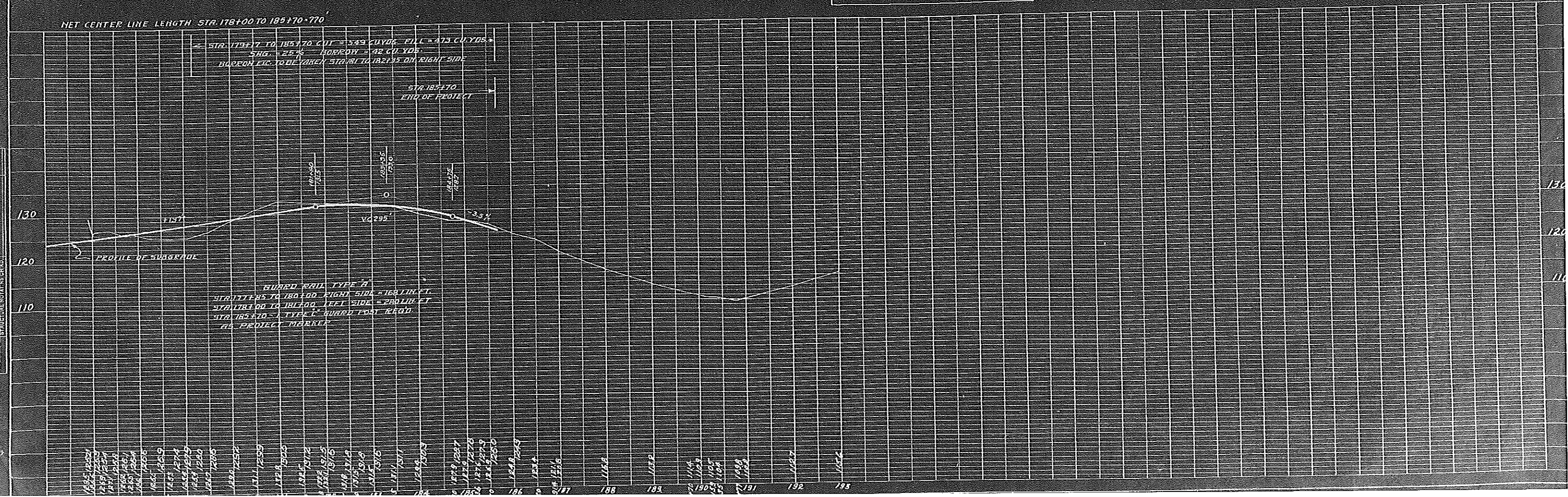
SUMMARY OF MISCELLANEOUS QUANTITIES THIS SHEET

ITEM	STA. TO STA.	AMT.	UNIT	TOTAL
GUARD RAIL TYPE A	177+85 TO 180+00 R.S.	168	LIN. FT.	
GUARD RAIL TYPE A	178+00 TO 181+00 L.S.	280	LIN. FT.	448
GUARD POST "C"	185+70	1	POST	1
TOP SOIL	178+00 TO 185+70	289	CU. YD.	289

BENCH MARK
RAILROAD SPIKE IN 8" NORWAY PINE
40 FT. RIGHT OF C. STA. 181+10 ELEV. = 134.59

NET CENTER LINE LENGTH STA. 178+00 TO 185+70 = 770

STA. 178+17 TO 185+70 CUT = 349 CU. YDS. FILL = 473 CU. YDS.
SLOPE = 2.5% HORIZONTAL = 42 CU. YDS.
BORROW EXC. TO BE TAKEN STA. 181 TO 182+35 ON RIGHT SIDE



NOTE: 1. CHECK ALL DIMENSIONS AND QUANTITIES.
 2. SEE SHEET 9 FOR PLAN VIEW.
 3. SEE SHEET 10 FOR PROFILE VIEW.
 4. SEE SHEET 11 FOR CROSS SECTIONS.
 5. SEE SHEET 12 FOR DETAILS.
 6. SEE SHEET 13 FOR NOTES.
 7. SEE SHEET 14 FOR SPECIFICATIONS.
 8. SEE SHEET 15 FOR CONTRACT DOCUMENTS.
 9. SEE SHEET 16 FOR GENERAL NOTES.
 10. SEE SHEET 17 FOR SPECIAL NOTES.
 11. SEE SHEET 18 FOR ADDITIONAL NOTES.
 12. SEE SHEET 19 FOR FURTHER NOTES.
 13. SEE SHEET 20 FOR FINAL NOTES.

CHECKED BY: [Signature]
 DATE: [Date]
 DRAWN BY: [Signature]
 DATE: [Date]