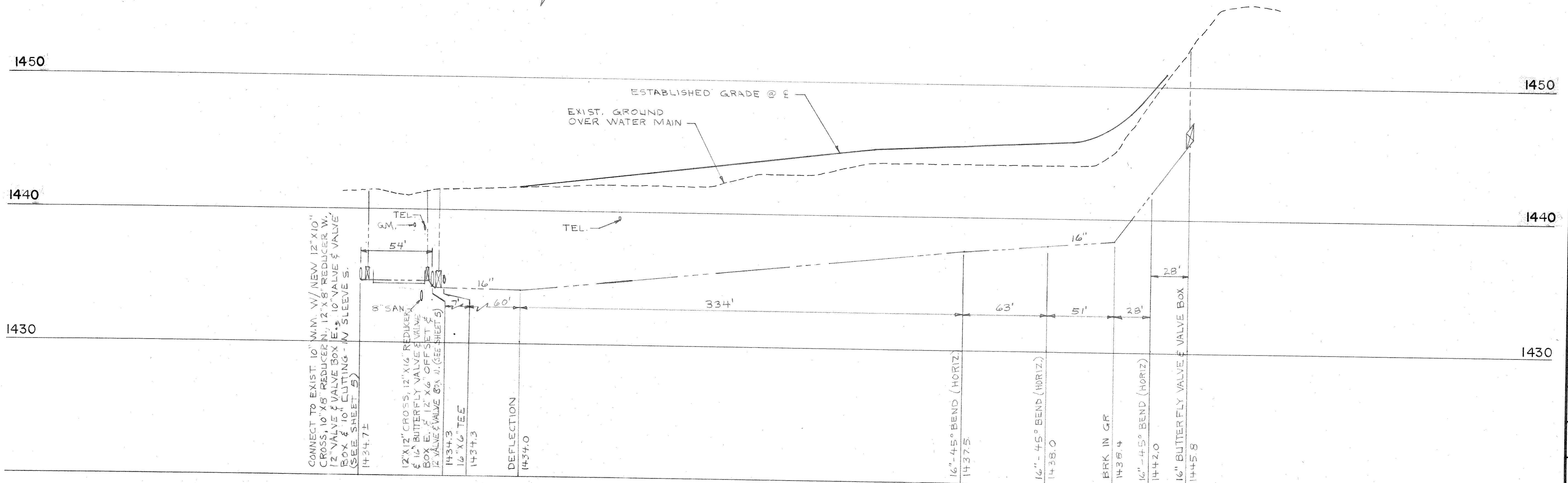
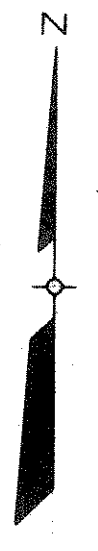


NOTE:
 EXISTING UTILITIES SHOWN, IN PLAN AND PROFILE, ARE INDICATED IN ACCORDANCE WITH AVAILABLE RECORDS. THE CONTRACTOR SHALL BE RESPONSIBLE FOR OBTAINING EXACT LOCATIONS AND ELEVATIONS OF ALL UTILITIES, INCLUDING SEWER AND WATER FROM THE OWNERS OF THE RESPECTIVE UTILITIES. ALL UTILITY OWNERS SHALL BE NOTIFIED BY THE CONTRACTOR 72 HOURS PRIOR TO EXCAVATION.



CONNECT TO EXIST. 10" W.M. W/ NEW 12" X 10" CROSS, 10" X 8" REDUCER N., 12" X 8" REDUCER W., 12" VALVE & VALVE BOX E., 10" VALVE & VALVE BOX & 10" CUTTING-IN SLEEVE S. (SEE SHEET 5)
 1434.71

12" X 12" CROSS, 12" X 16" REDUCER & 16" BUTTERFLY VALVE & VALVE BOX E., 12" X 6" OFF SET & 12" VALVE & VALVE BOX N. (SEE SHEET 5)
 1434.3

16" X 6" TEE
 1434.3

DEFLECTION
 1434.0

16"-45° BEND (HORIZ.)
 1437.5

12"-45° BEND (HORIZ.)
 1438.0

BRK IN GR
 1438.4

16"-45° BEND (HORIZ.)
 1442.0

16" BUTTERFLY VALVE & VALVE BOX
 1445.8

DESIGNER SLY	DRAWN BY RJC	NO.	REVISIONS	BY	DATE
CHECKED	APPROVED				
DATE AUG., 1980					
SCALE AS SHOWN					



WATER SYSTEM IMPROVEMENTS
 WATER TOWER DRIVE FROM 4TH ST. TO WATER TOWER
 TOMAHAWK, WISCONSIN

SECTION CONTRACT 74
PROJECT NO. 10410.200
FILE NO. SK-10602
SHEET NO. 9 OF 11