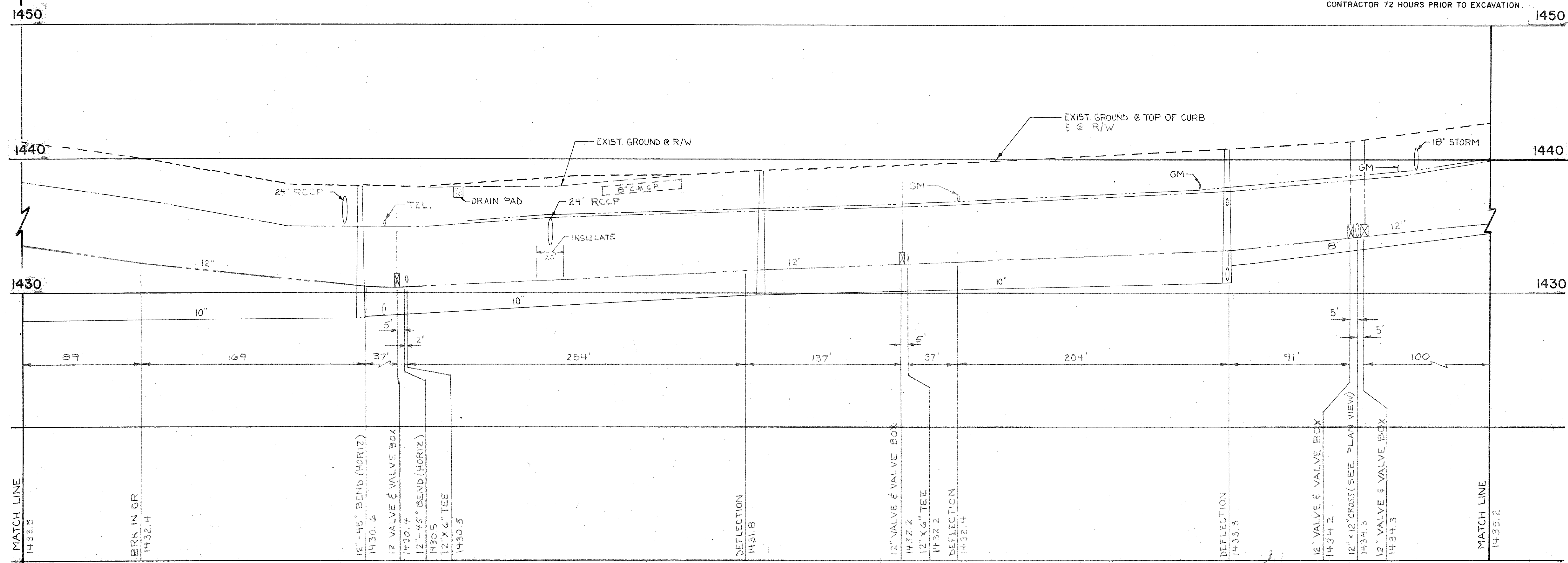


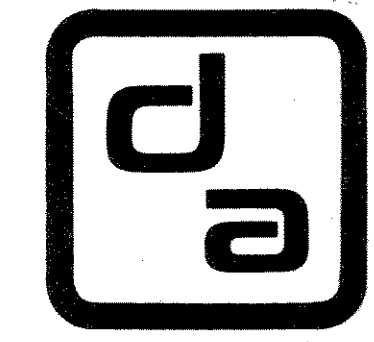
4TH STREET - U.S.H. 51

NOTE:
FOR 16" WATER MAIN
TO NEW WATER TOWER
SEE SHEET 9.

NOTE:
EXISTING UTILITIES SHOWN, IN PLAN AND PROFILE,
ARE INDICATED IN ACCORDANCE WITH AVAILABLE
RECORDS. THE CONTRACTOR SHALL BE RESPONSIBLE
FOR OBTAINING EXACT LOCATIONS AND ELEVATIONS
OF ALL UTILITIES, INCLUDING SEWER AND WATER
FROM THE OWNERS OF THE RESPECTIVE UTILITIES.
ALL UTILITY OWNERS SHALL BE NOTIFIED BY THE
CONTRACTOR 72 HOURS PRIOR TO EXCAVATION.



| | | | |
|----------|------------|----------|-----|
| DESIGNER | SLY | DRAWN BY | RJC |
| CHECKED | | APPROVED | |
| DATE | AUG., 1980 | | |
| SCALE | AS SHOWN | | |



donohue
& associates inc.
CONSULTING ENGINEERS

WATER SYSTEM IMPROVEMENTS
4TH STREET-U.S.H. 51 FROM STA. 70+00
TO LEATHER AVE. (STA. 81+00)
TOMAHAWK, WISCONSIN

SECTION II
CONTRACT D
PROJECT NO.
104-10-200
FILE NO.
SK-10606
SHEET NO.
5 OF 11