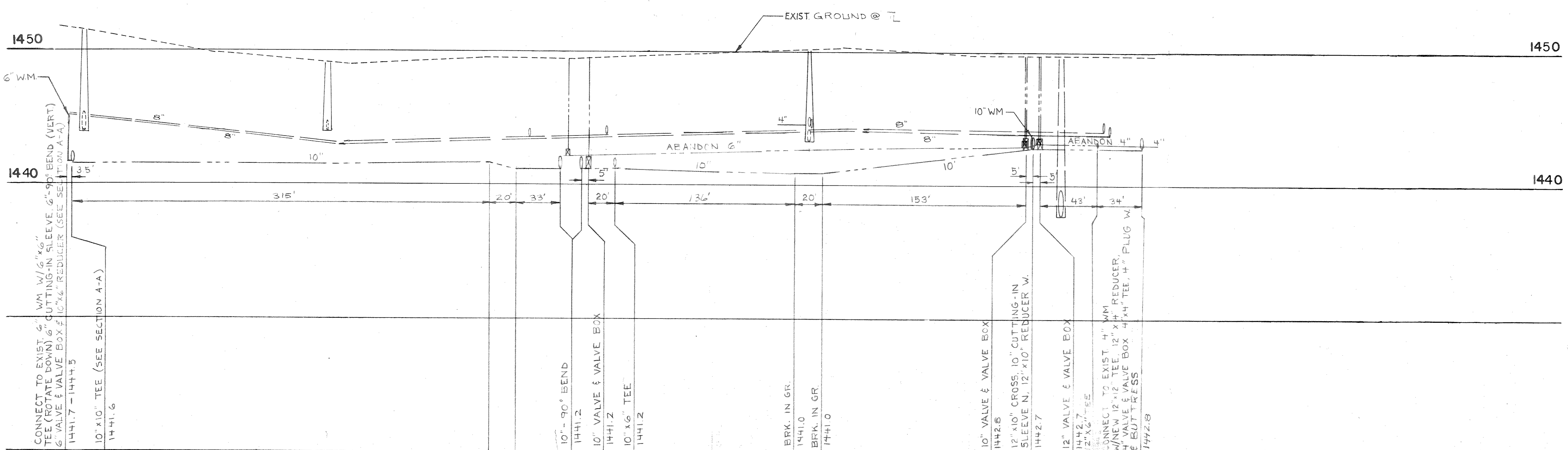


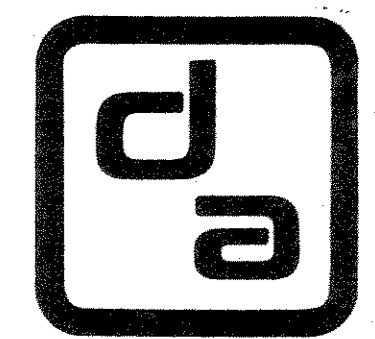
NOTE:
EXISTING UTILITIES SHOWN, IN PLAN AND PROFILE, ARE INDICATED IN ACCORDANCE WITH AVAILABLE RECORDS. THE CONTRACTOR SHALL BE RESPONSIBLE FOR OBTAINING EXACT LOCATIONS AND ELEVATIONS OF ALL UTILITIES, INCLUDING SEWER AND WATER FROM THE OWNERS OF THE RESPECTIVE UTILITIES. ALL UTILITY OWNERS SHALL BE NOTIFIED BY THE CONTRACTOR 72 HOURS PRIOR TO EXCAVATION.

1460

1460



DESIGNER SLY	DRAWN BY RJC	NO.	DATE
CHECKED	APPROVED	REVISIONS	BY
DATE AUG., 1980		ALL RIGHTS RESERVED	
SCALE AS SHOWN			



donohue
& ASSOCIATES INC.
CONSULTING ENGINEERS

SECTION I
CONTRACT D

PROJECT NO.
10410 200

FILE NO.
SK-10608

SHEET NO.
3 OF 11

WATER SYSTEM IMPROVEMENTS
3RD STREET FROM PROSPECT AVE. TO RIVER ST.
& RIVER STREET FROM 3RD ST. TO 4TH ST.
TOMAHAWK, WISCONSIN