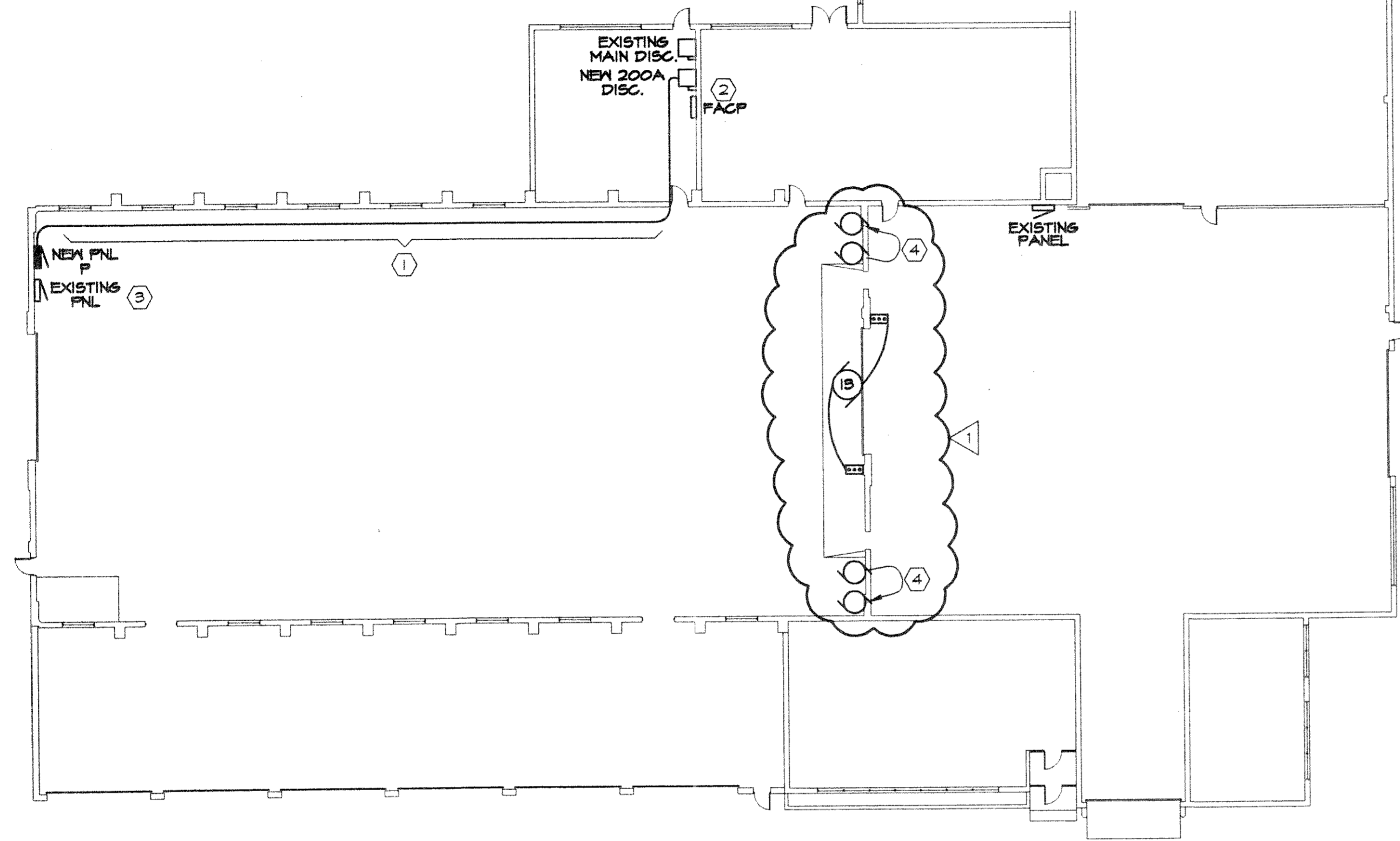


SHEET E102 PLAN NOTES

- RE-ROUTE EXISTING CONDUIT AND CONDUCTORS UNDER ALTERNATE BID. CONDUITS SERVICE A 50 AMP OUTLET, CONVENIENCE OUTLETS, ETC. FIELD VERIFY EQUIPMENT SERVED AND CONDUCTOR SIZES. ROUTE NEW CONDUITS AT APPROXIMATELY 8" AFF. PROVIDE JUNCTION BOXES, CONDUIT, AND CONDUCTORS AS REQUIRED.
- EXISTING FIRE ALARM CONTROL PANEL, EDWARDS 120 VOLT SYSTEM #CGVA-1.
- EXISTING PANELBOARD TO REMAIN IN SERVICE. REMOVE EXISTING FEEDER AND PROVIDE NEW FEEDER PER POWER RISER DIAGRAM.
- EXISTING SIDE-WALL EXHAUST FANS AND LOUVERS TO BE RELOCATED BY HVAC CONTRACTOR AS SHOWN. EXTEND EXISTING CONDUIT AND CONDUCTORS FOR EXHAUST FAN POWER AND CONTROLS TO NEW LOCATION AS REQUIRED. REFER TO NEXT DEMOLITION ELEVATION SHEET A200.



OVERALL ELECTRICAL PLAN
SCALE: 1" = 20'-0"

LIGHT FIXTURE SCHEDULE (PART 1 AND PART 2)

LUMINAIRE TYPE	MANUFACTURER	CATALOG NUMBER	LAMPS			BALLASTS			MOUNT	DESCRIPTION	NOTES
			TYPE	CATALOG #	NO.	WATTS/LAMP	TYPE	NO.			
E	LITHONIA	QMSWIR-ELN	I	WU	-	-	-	120	UNIVERSAL	SINGLE FACED LED EXIT SIGN, RED LETTERS, BRUSHED ALUMINUM HOUSING AND EMERGENCY BATTERY PACK	
M	YORKLITE	EQUAL TO LITHONIA	F	F032/735	4	32	E	120	SURFACE	8' INDUSTRIAL, DAMP LOCATION	1,2
CC	LITHONIA	TXA-100M-120-FE	H	M100	1	100	S	120	SURFACE	EXTERIOR WALL PACK WITH PHOTO CELL	

ABBREVIATIONS: F - FLUORESCENT E - ELECTRONIC HIGH FREQUENCY WU - WITH UNIT
I - INCANDESCENT S - STANDARD ENERGY-SAVING MAGNETIC
H - HIGH INTENSITY DISCHARGE O - OTHER (SEE NOTES)

NOTES:

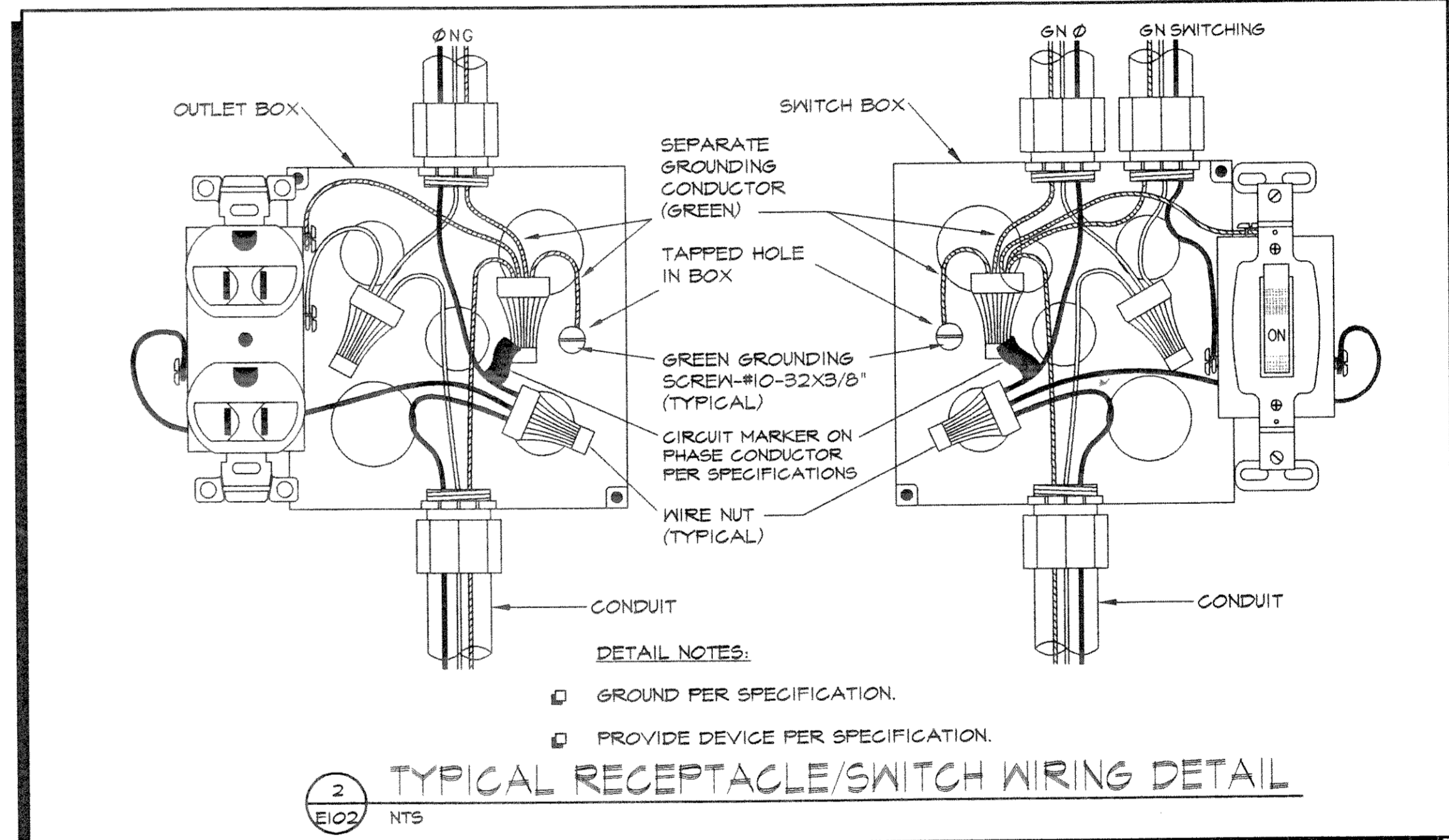
- PROVIDE SHADED FIXTURES WITH BODINE BOOST EMERGENCY BALLAST.
- PROVIDE FIXTURE WITH ELECTRONIC BALLAST. SEE SPECIFICATIONS FOR FURTHER INFORMATION.

PANEL SCHEDULE

PANEL	LOCATION	TYPE	BUS	MCB	MLO	VOLT	PHASE	TUBS	MOUNT	RATING	CIRCUIT BREAKERS						NOTES	
											QTY	POLE	AMP	QTY	POLE	AMP		
P	ROOM 2	PANELBOARD	200	-	MLO	120/208	3PH 4 WIRE	1	42	SURFACE	10K	26	1	20	1	1	25	1

PANEL SCHEDULE NOTES

- PROVIDE WITH SUB-FEED LUSS.



© Copyright 1999, Becher-Hoppe Assoc. Inc.

DRAWN BY: B. HAMLIN

CHK'D BY: D. WHITLEY

DATE: 14 JULY 2000

SCALE: AS SHOWN

REVISIONS:

NO.	DESCRIPTION	DATE
1	AS PER STATE APPROVAL	8-7-00

NOTES:

BHA
BECHER-HOPPE ASSOCIATES INC.
ENGINEERS ARCHITECTS SCIENTISTS
330 FOURTH STREET P.O. BOX 8000 WAUSAU WI 54402-8000
Telephone: (715) 845-8000 Fax: (715) 845-8008

SUBCONSULTANT(S):

PROJECT:
LINCOLN COUNTY
VEHICLE STORAGE
GARAGE ADDITION

OWNER:
LINCOLN COUNTY HIGHWAY DEPARTMENT

SHEET TITLE:
ELECTRICAL
DETAILS AND
SCHEDULES

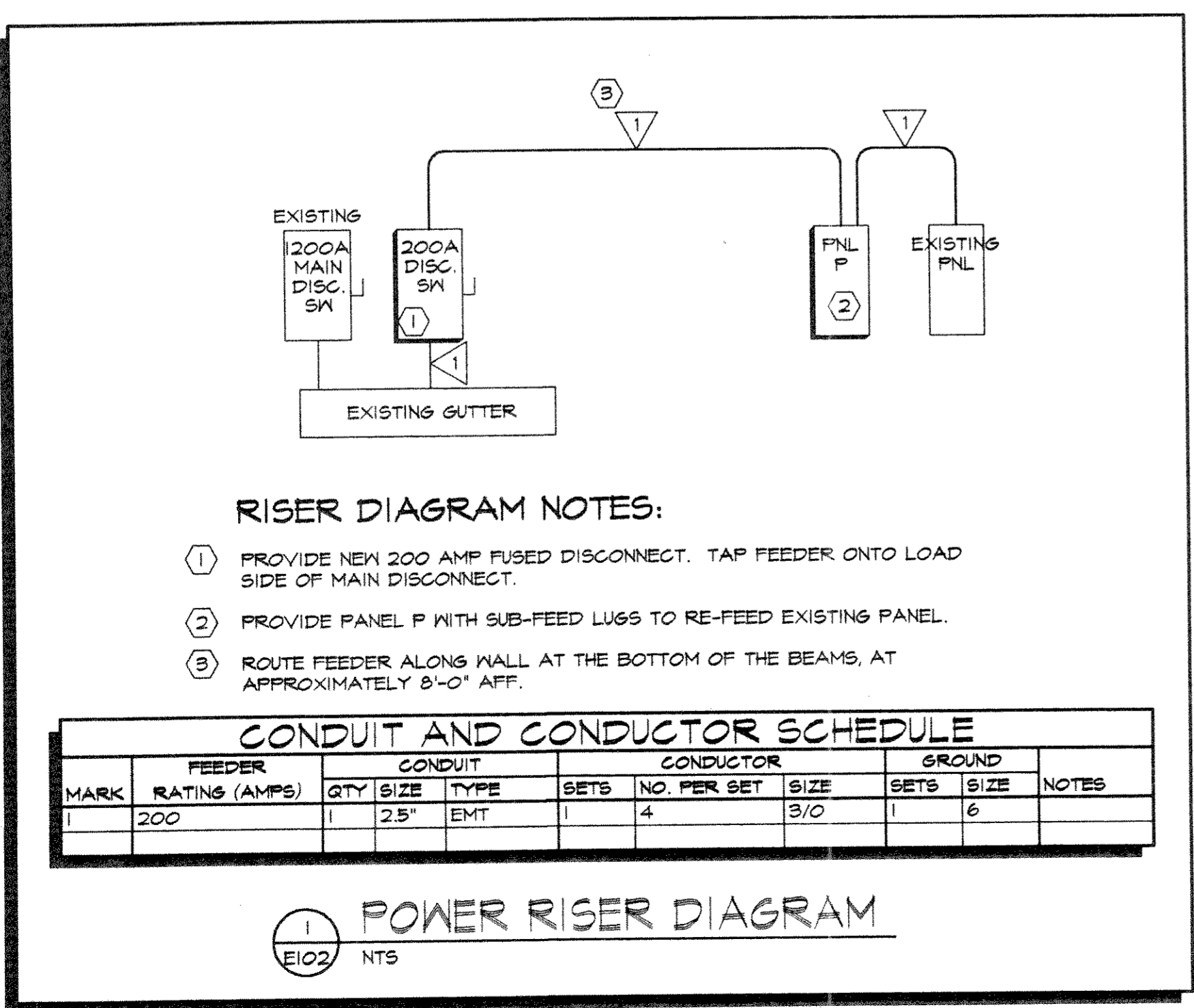
PROJECT NUMBER: 99029

DWG. FILE NAME:

E102

SHEET NUMBER 12 **OF** 12

00067E102-RV.DWG - PLOTTED AT 11:13 AM ON 08-07-2000 BY RSTEWART



MOTOR SCHEDULE

NO.	SERVING	HP	VOLT	PH	KW	FLA	LOC.	PNL-CKT	BRKR	NO.	WIRE			CONDUIT		STARTER			DISCONNECT			NOTES				
											SIZE	GND	TYPE	SIZE	TYPE	TYPE	SIZE	ENCLS. (NEMA)	MOUNT	BY	SIZE		FUSE SIZE	ENCLS. (NEMA)	MOUNT	BY
1	EXHAUST FAN EF-1	1/8	120	1	-	-	RM 2	P-1	20/1	2	12	12	THHN	3/4"	EMT	MAG	O	1	NU	EC	TS	-	1	NU	EC	2.6
2	EXHAUST FAN EF-2	1/8	120	1	-	-	RM 2	P-3	20/1	2	12	12	THHN	3/4"	EMT	MAG	O	1	NU	EC	TS	-	1	NU	EC	2.6
3	EXHAUST FAN EF-3	3/4	120	1	-	-	RM 2	P-5	25/1	2	10	10	THHN	3/4"	EMT	-	-	-	-	TS	-	1	NU	EC	2.4	
4	EXHAUST FAN EF-4	1/8	120	1	-	-	RM 2	P-7	20/1	2	12	12	THHN	3/4"	EMT	MAN	MO	1	PLAN	EC	TS	-	1	NU	EC	2.7
5	EXHAUST FAN EF-5	1/8	120	1	-	-	RM 2	P-9	20/1	2	12	12	THHN	3/4"	EMT	MAN	-	-	-	TS	-	1	NU	EC	2.5	
6	HEAT/VENT UNIT HVU-1	3	208	3	-	-	RM 2	P-2,4,6	20/3	3	12	12	THHN	3/4"	EMT	WU	-	-	-	30A	-	1	NU	EC	2.5	
7	GARAGE DOOR	1/3	120	1	-	-	RM 2	P-13	20/1	2	12	12	THHN	3/4"	EMT	WU	-	-	-	TS	-	1	NU	EC	1	
8	GARAGE DOOR	1/3	120	1	-	-	RM 2	P-15	20/1	2	12	12	THHN	3/4"	EMT	WU	-	-	-	TS	-	1	NU	EC	1	
9	GARAGE DOOR	1/3	120	1	-	-	RM 2	P-17	20/1	2	12	12	THHN	3/4"	EMT	WU	-	-	-	TS	-	1	NU	EC	1	
10	GARAGE DOOR	1/3	120	1	-	-	RM 2	P-19	20/1	2	12	12	THHN	3/4"	EMT	WU	-	-	-	TS	-	1	NU	EC	1	
11	GARAGE DOOR	1/3	120	1	-	-	RM 2	P-21	20/1	2	12	12	THHN	3/4"	EMT	WU	-	-	-	TS	-	1	NU	EC	1	
12	GARAGE DOOR	1/3	120	1	-	-	RM 2	P-23	20/1	2	12	12	THHN	3/4"	EMT	WU	-	-	-	TS	-	1	NU	EC	1	
13	COILING FIRE DOOR	2	208	3	-	-	RM 2	P-8,10,12	20/3	3	12	12	THHN	3/4"	EMT	WU	-	-	-	30A	-	1	NU	EC	1.8,9	

ABBREVIATIONS:
COMB - COMBINATION STARTER
EC - ELECTRICAL CONTRACTOR
ES - EQUIPMENT SUPPLIER
HVAC - HEATING/VENTILATING CONTRACTOR
MAG - MAGNETIC STARTER
MAN - MANUAL STARTER
NU - NEAR UNIT
OU - ON UNIT
PLGC - PLUMBING CONTRACTOR
TS - TOGGLE SWITCH
VFD - VARIABLE FREQUENCY DRIVE
WU - WITH UNIT

MOTOR SCHEDULE NOTES

- PROVIDE AND INSTALL ALL POWER, CONTROL, CONDUIT, AND WIRING TO DOOR OPERATING DEVICE.
- PROVIDE ALL NECESSARY CONTROL WIRING FOR HVAC EQUIPMENT. PROVIDE LINE VOLTAGE RELAYS AS NECESSARY.
- REUSE EXISTING MANUAL STARTER. SEE PLANS.
- REUSE EXISTING STARTER AND CONTROLS. SEE PLANS.
- PROVIDE CONDUIT AND CONDUCTORS FROM HVU TO CONTROL PANEL AS REQUIRED.
- INTERLOCK WITH HVU-1.
- MANUAL STARTER SHALL BE GREENHECK #6TD OR PRE-APPROVED EQUAL.
- INTERLOCK WITH EXISTING MANUAL FIRE ALARM SYSTEM.
- CONTRACTOR MAY RE-USE EXISTING OVERHEAD DOOR CIRCUIT IF EXISTING CIRCUIT HAS ENOUGH AMPACITY, FIELD VERIFY.