

GRILLE, REGISTER, & DIFFUSER SCHEDULE

PLAN SYMBOL	DESCRIPTION	REPR. MFG. & MODEL NO.	ACCESSORIES
SR-1	ALUMINUM DOUBLE REFLECTION REGISTER, 34" O.C., ADJUSTABLE VANES VERT. FACE, DUCT MOUNTED	LEWIS & CLARK 5880V	OPPOSED BLADE DAMPER

EXHAUST FAN SCHEDULE

PLAN SYMBOL	ROOM NO.	SYSTEM	CFM	SP	WHEEL TYPE & SIZE	RPM	APPROX. MOTOR H.P.	ELECTRICAL CHAR.	DRIVE	FAN TYPE	REPR. MFG. & MODEL NO.	CONTROL
EF-1	101	GEN. EXHAUST	2800	1/4"	PROP. 20"	965	1/3	120/100/1	BELT	PROP.	GREENHELM SFF-20 (1)	INTERLOCK WITH MAU-1

(1) PROVIDE DISCHARGE DAMPER, WALL BOX, AND ACCESS PANEL INDUCT.

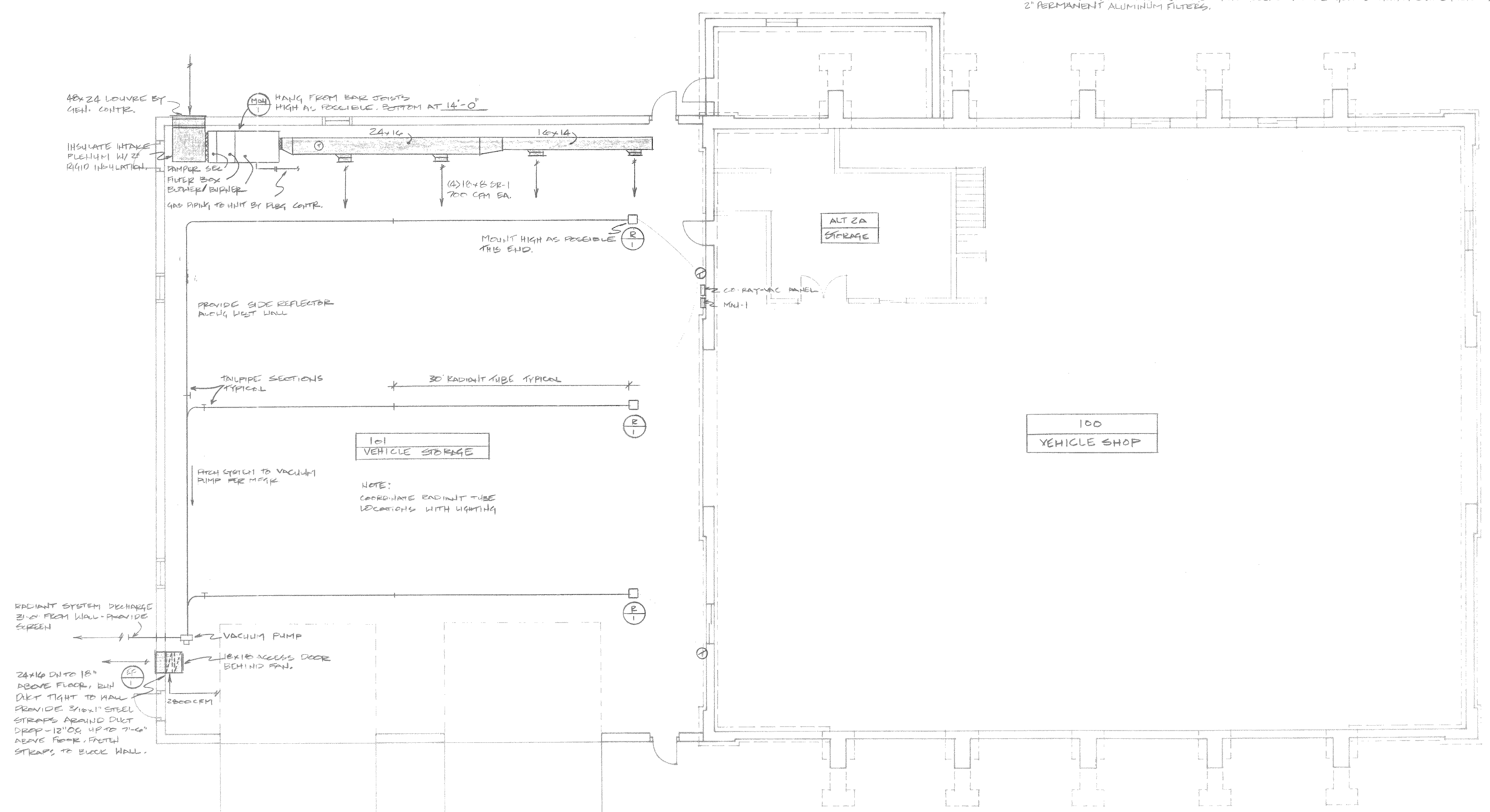
INFRARED RADIANT GAS HEATER SCHEDULE

PLAN SYMBOL	BURNER (INP. BTUH)	NO. OF BURNERS	MTG. HGT. BOT. REFL.	RADIANT PIPE LGTH.	GAS LINE FLEX. CONN.	VAC. PUMP REQUIRED	CONTROL PANEL	MFG. MOD. NUMBER	ACCESSORIES
R-1	80000	3	APPROX. 19'-6"	30	1/2"	LO. LO. AMP 120V	STD.	CO. PAT. VAC. GEN. - AB	

GAS FIRED MAKE-UP AIR UNIT SCHEDULE

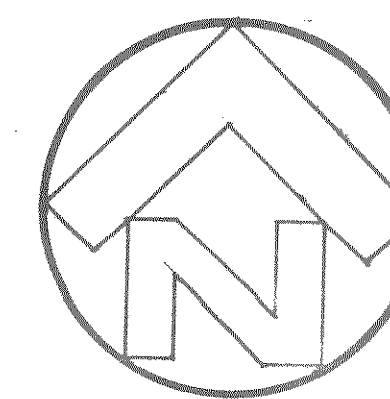
PLAN SYMBOL	CFM	E.A.T.	L.A.T.	GAS TYPE	INPUT BTUH	OUTPUT BTUH	HEAT EXCHANGER MATERIAL	VENT SIZE	MOTOR H.P.	R.P.M.	ELECT. CHAR.	REPR. MFG. & MODEL NO.	ACCESSORIES
MAU-1	2800	25	6.5	NAT. GAS	273000	273000	DIRECT FIRED.	NONE	1/2 HP BELT DRIVE	1200	120V/1PH	TITAN TA-12	(1)

(1) PROVIDE UL GAS TRAP AT UNIT. CONNECTION BY PLUMBING CONTR. DUCT MOUNTED DISCHARGE THERMOSTAT WITH ADJUSTABLE REMOTE SET POINT. ALL CONTROLS UNIT MOUNTED EXCEPT FOR THERMOSTAT. PROVIDE MODIFIED INLET DAMPER INTERLOCKED WITH ON/OFF SWITCH. PROVIDE FILTER SECTION WITH 2" PERMANENT ALUMINUM FILTERS.



RADIANT HEATING SYSTEM NOTES

- Grade all radiant and tailpipe lines 1 inch per 50 feet.
- Discharge pipe shall extend 3'-0" minimum from exterior wall and terminate with approved bird screen. Pitch discharge pipe per manufacturer's recommendations to outside.
- Final gasline connection to burners shall be made with flexible connection by mechanical contractor.
- Exact elevation of burners, radiant piping and tailpipe shall be verified for required clearances prior to installation.
- Initial system start-up shall be performed under the direction of the manufacturer's representative who shall review the installation prior to start-up.
- All equipment and materials shall be installed in accordance with the manufacturer's recommendations.



1 FLOOR PLAN
HV-1 1/8"=1'-0"

NO.	BY	DATE	REVISIONS	RFV	DESIGN	CHECKED



LINCOLN COUNTY
VEHICLE STORAGE ADDITION
TOMAHAWK, WISCONSIN

HEATING VENTILATION

WHA
WALT HESTEKIN ASSOCIATES, LTD.
Consulting Engineers
P.O. Box 447, Eau Claire, WI 54702-0447
TELEPHONE: (715) 835-1209
WHA NO. 88104

FILE NO.
89003
DATE
AUG. 88
HV1