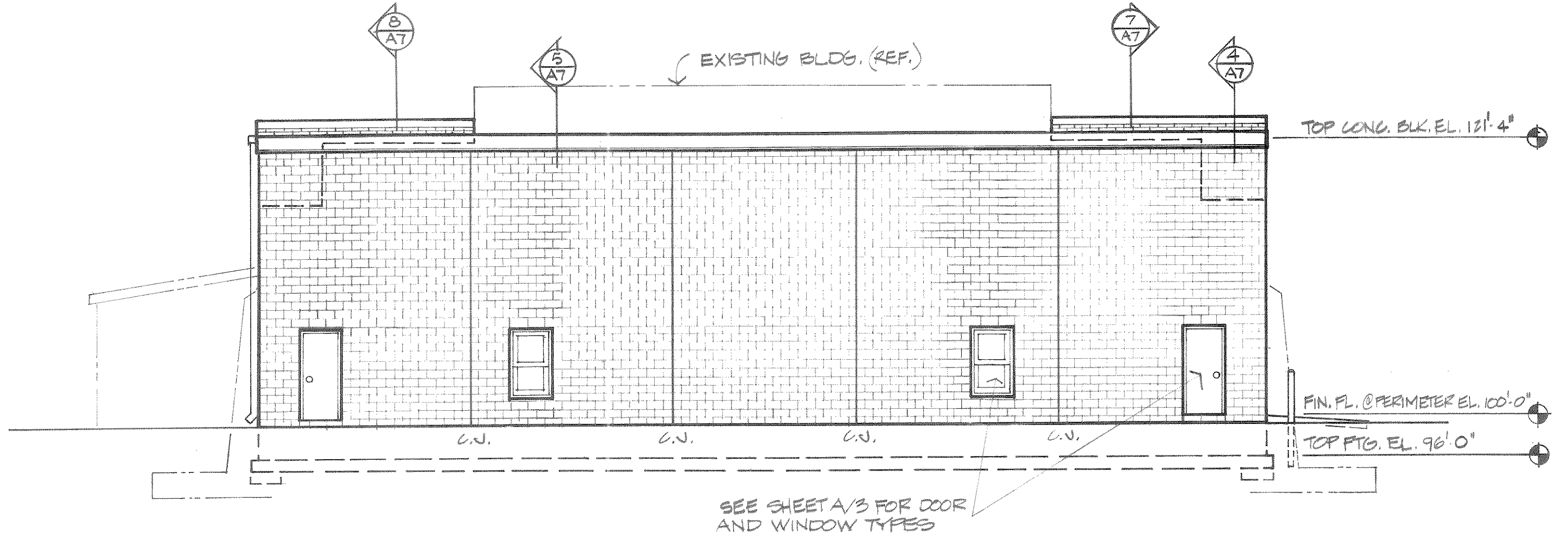
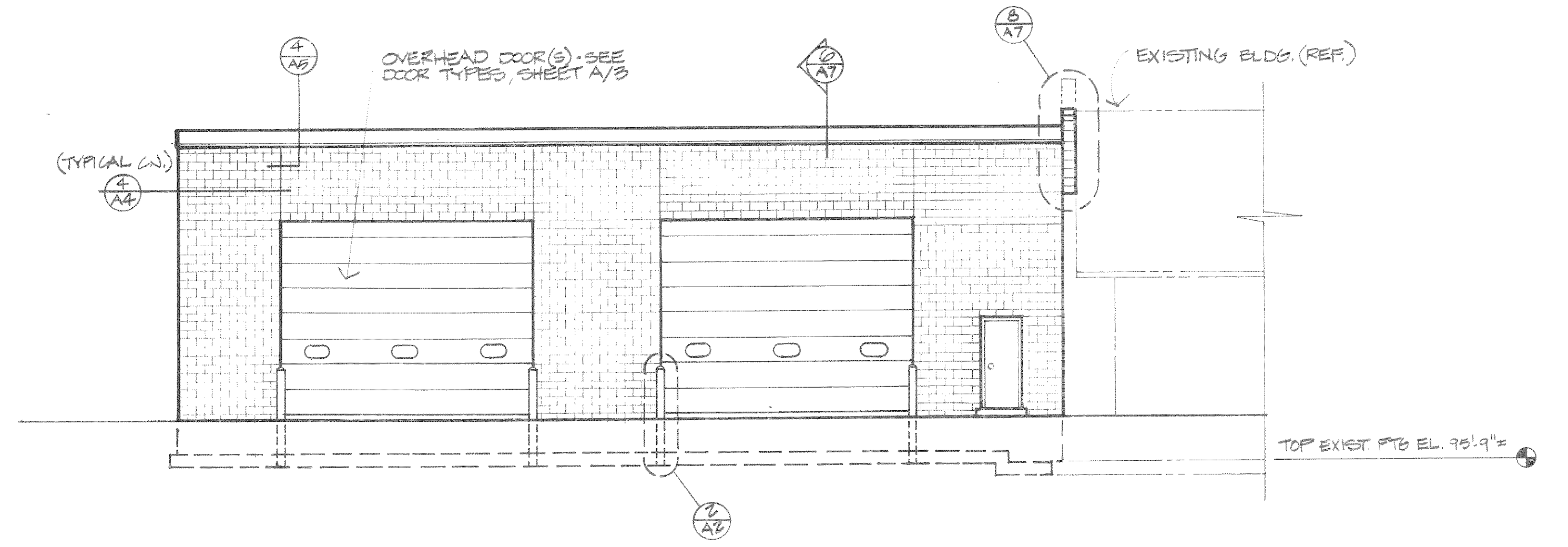


BASE	OVERLAY	DRG. NO.

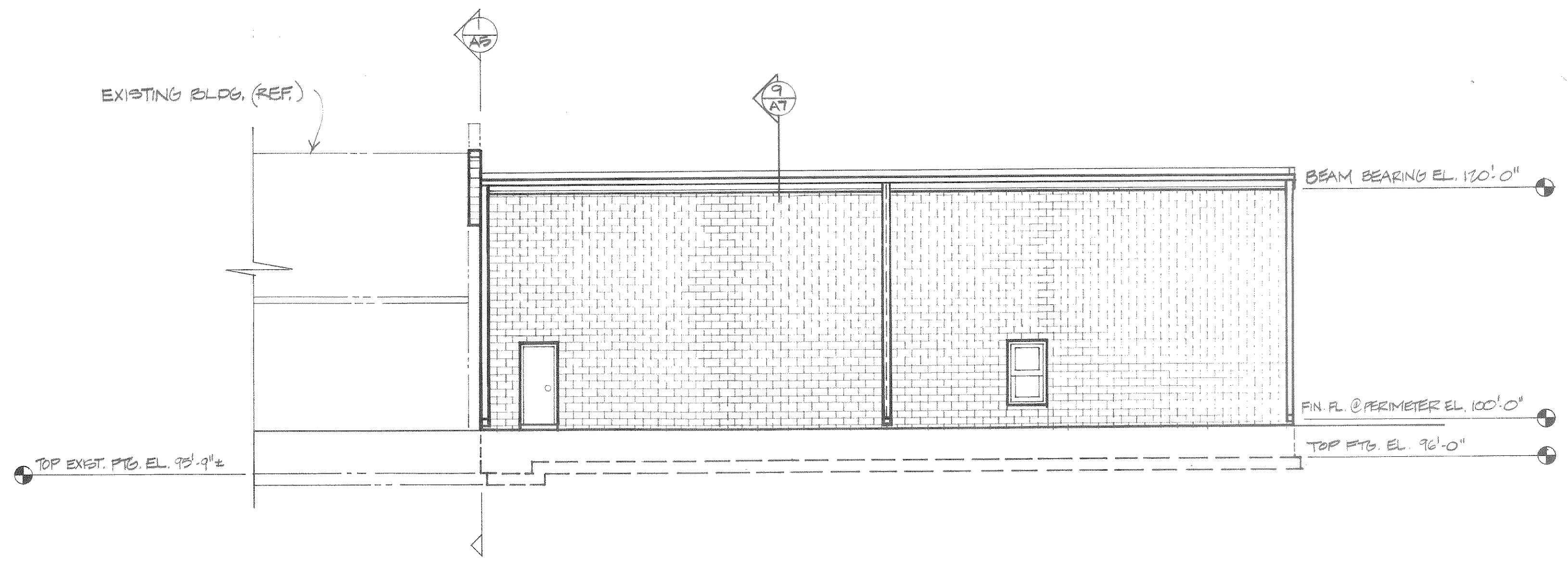


WEST ELEVATION
1/8" = 1'-0"



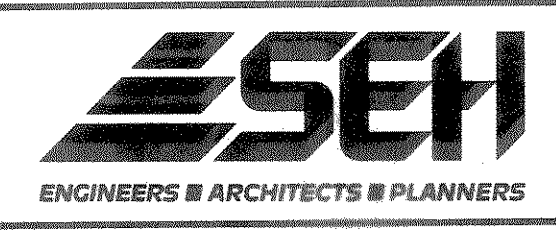
SOUTH ELEVATION
1/8" = 1'-0"

4/A4 C.V. DETAIL
NOTE: IN END BEAM REBAR SHALL BE LAPPED AND CONTINUE THRU JOINT. BREAK BOND @ ONE END OF RE-BAR BY WRAPPING W/DUCT TAPE.



NORTH ELEVATION
1/8" = 1'-0"

NO.	BY	DATE	REVISIONS	ITEM	DESIGN	CHECKED



LINCOLN COUNTY
VEHICLE STORAGE ADDITION
TOMAHAWK, WISCONSIN

BUILDING ELEVATIONS

FILE NO.
89003
DATE
AUG. 88

A4