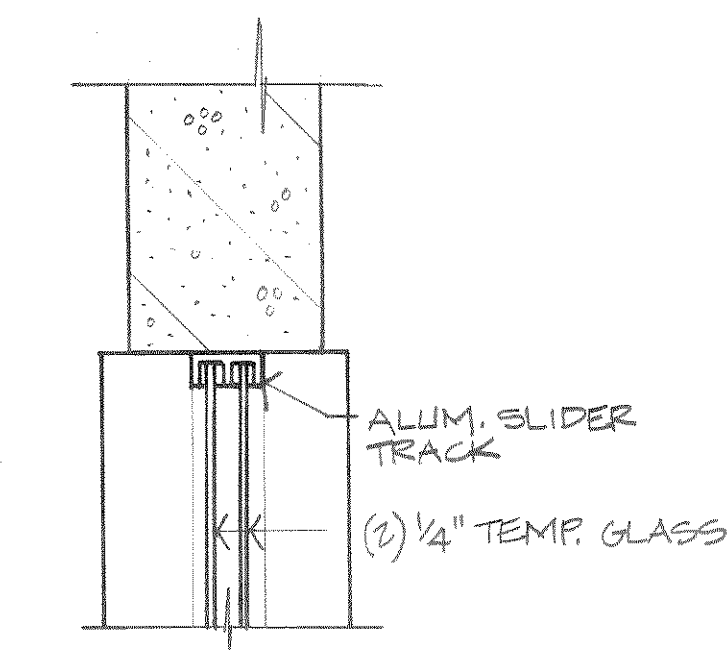


ROOM FINISH SCHEDULE

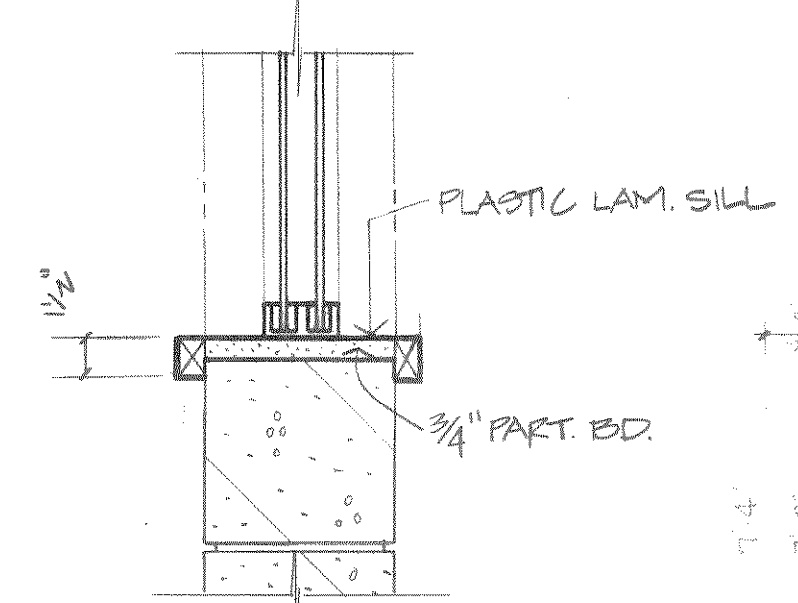
NO.	ROOM NAME	CLG. HT.	WALLS								FLOOR	BASE	NOTES
			NORTH		SOUTH		EAST		WEST				
			MAT'L.	FIN.	MAT'L.	FIN.	MAT'L.	FIN.	MAT'L.	FIN.			
100	VEHICLE SHOP	EXIST.	EXIST.	EXIST.	EXIST.	EXIST.	EXIST.	EXIST.	EXIST.	EXIST.	EXIST.	EXISTING; TO REMAIN AS IS	
101	VEHICLE STOR.	STRUC. PAINT	INTERIOR & EXTERIOR CONC. BULK. TO RECEIVE 2 ND COAT CHEMISTON EXIST. EAST WALL TO REMAIN AS IS	EXIST.	EXIST.	EXIST.	EXIST.	EXIST.	EXIST.	EXIST.	EXIST.	EXISTING; TO REMAIN AS IS	
ALT. 2A	STORAGE	CONC. PAINT	8'-0" CONC. AND BRICK	PAINT BLOCK PAINT	BLOCK PAINT	BLOCK PAINT	BLOCK PAINT	BLOCK PAINT	BLOCK PAINT	EXIST.	EXIST.	PAINT EXIST. IS NOT EXT. BRICK IS NOT	

DOOR AND HARDWARE SCHEDULE

DOOR NUMBER	DOOR TYPE	DOOR WIDTH	DOOR HEIGHT	FRAME SIZE	FRAME MATERIAL	GLASS SIZE	GLASS TYPE	FRAME	BUTTS	LOCKSET	CLOSURE	STOP	FLUSH	PULL	KKK #	NOTES
								STANLEY EXT US 200 D HT US 200 D 1 1/2" X 1 1/2"	COBBIN 803 GLOBAL US 200 D	LCM ALUM	IVES US 200 D					
101	A	3'-0"	7'-0"	5 3/4"	H.M.	6' 10" 11"	AB AB AB	SEE SCHEDULE	SEE SCHEDULE	SEE SCHEDULE	SEE SCHEDULE	SEE SCHEDULE				(2)
101-1	A	3'-0"	7'-0"	5 3/4"	H.M.	6' 10" 11"	AB AB AB	SEE SCHEDULE	SEE SCHEDULE	SEE SCHEDULE	SEE SCHEDULE	SEE SCHEDULE				(2)
101-2	A	3'-0"	7'-0"	5 3/4"	H.M.	6' 10" 11"	AB AB AB	SEE SCHEDULE	SEE SCHEDULE	SEE SCHEDULE	SEE SCHEDULE	SEE SCHEDULE				(2)
101-3	A	3'-0"	7'-0"	5 3/4"	H.M.	6' 10" 11"	AB AB AB	SEE SCHEDULE	SEE SCHEDULE	SEE SCHEDULE	SEE SCHEDULE	SEE SCHEDULE				(2)
ALT. 2A	B	3'-0"	7'-0"	5 3/4"	H.M.	7' 8"	AB AB AB	SEE SCHEDULE	SEE SCHEDULE	SEE SCHEDULE	SEE SCHEDULE	SEE SCHEDULE				(1)
ALT. 2A	B	3'-0"	7'-0"	5 3/4"	H.M.	7' 8"	AB AB AB	SEE SCHEDULE	SEE SCHEDULE	SEE SCHEDULE	SEE SCHEDULE	SEE SCHEDULE				(1)

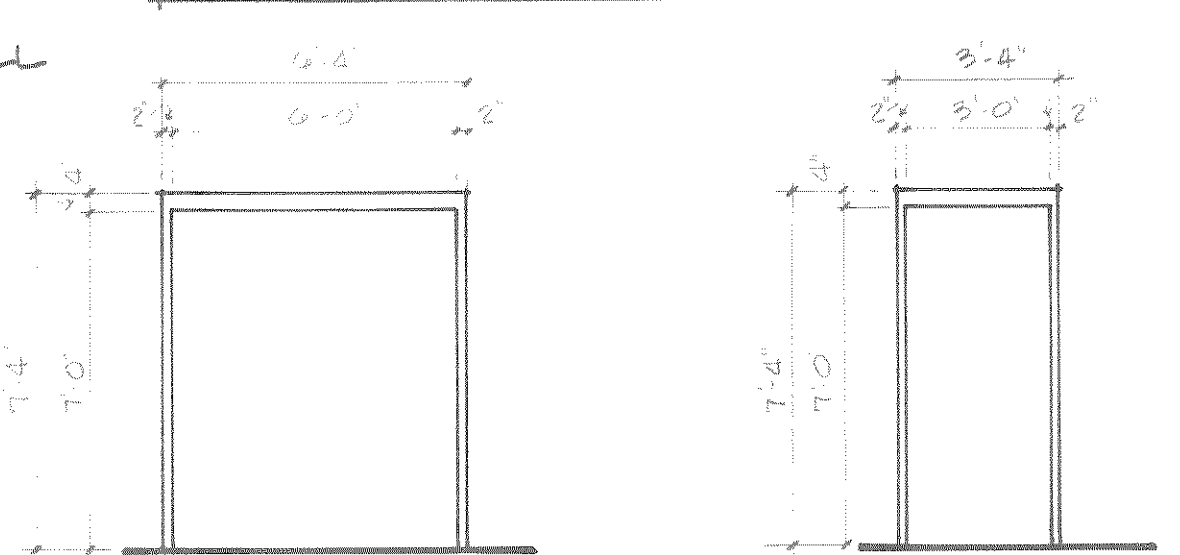


19 JAMB 1 1/2" x 1'-0"



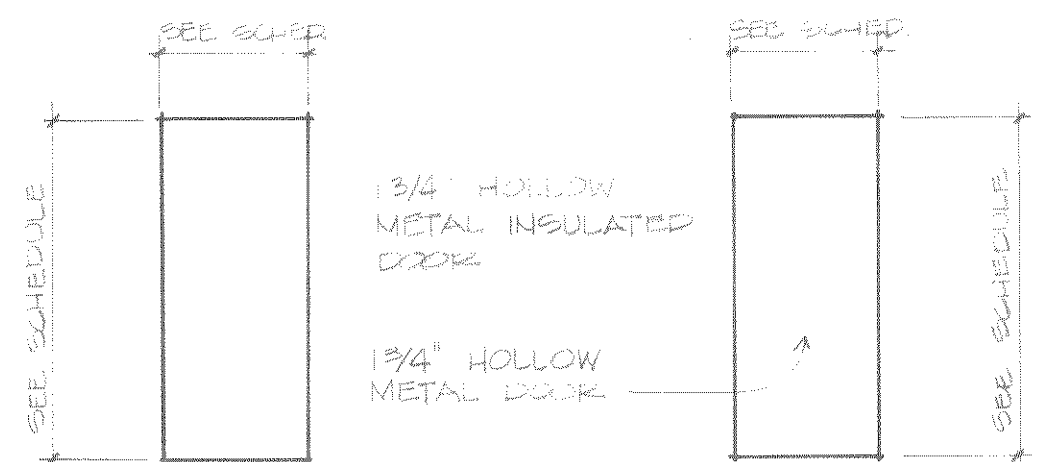
18 SILL 1 1/2" x 1'-0"

FRAME ELEVATIONS

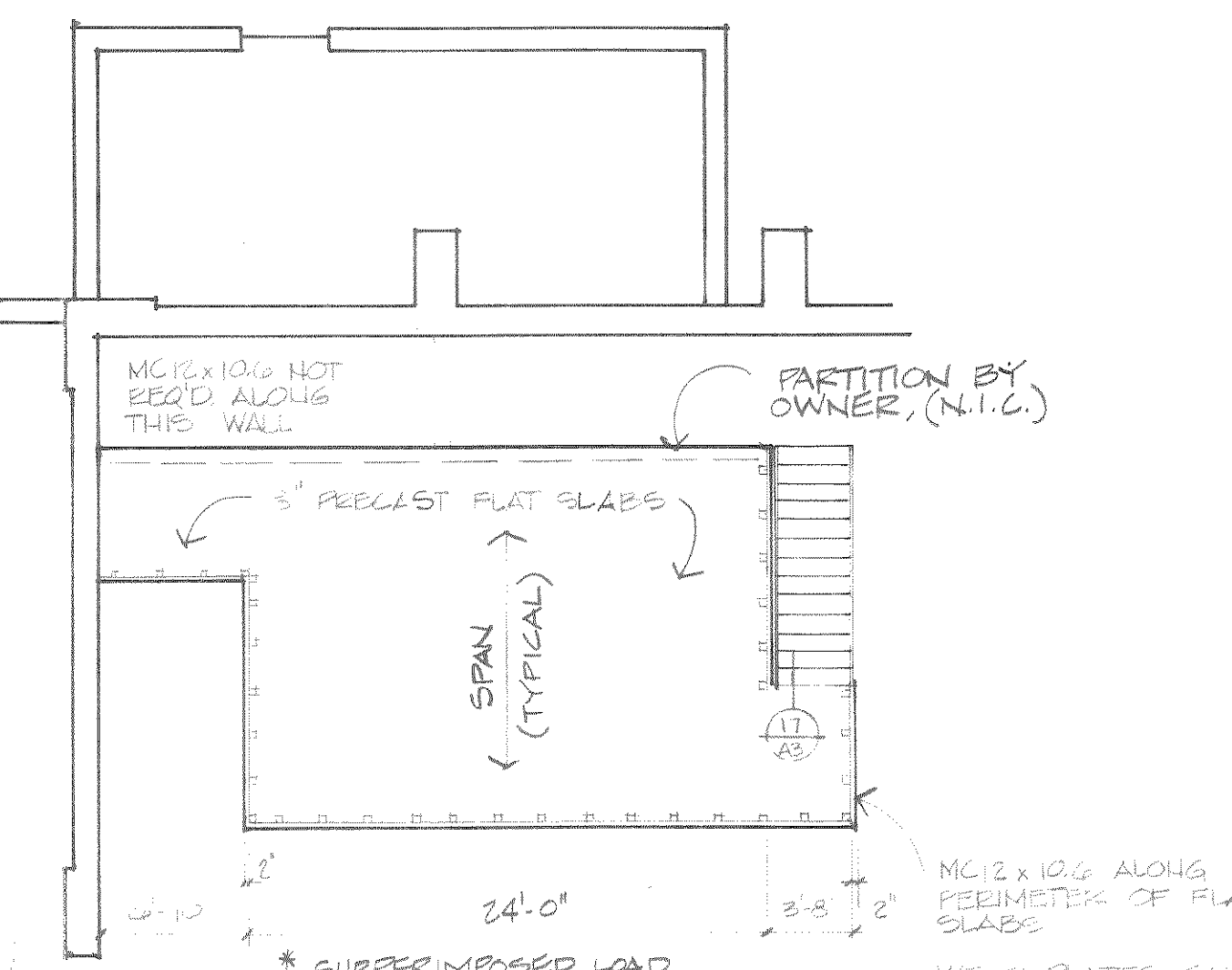
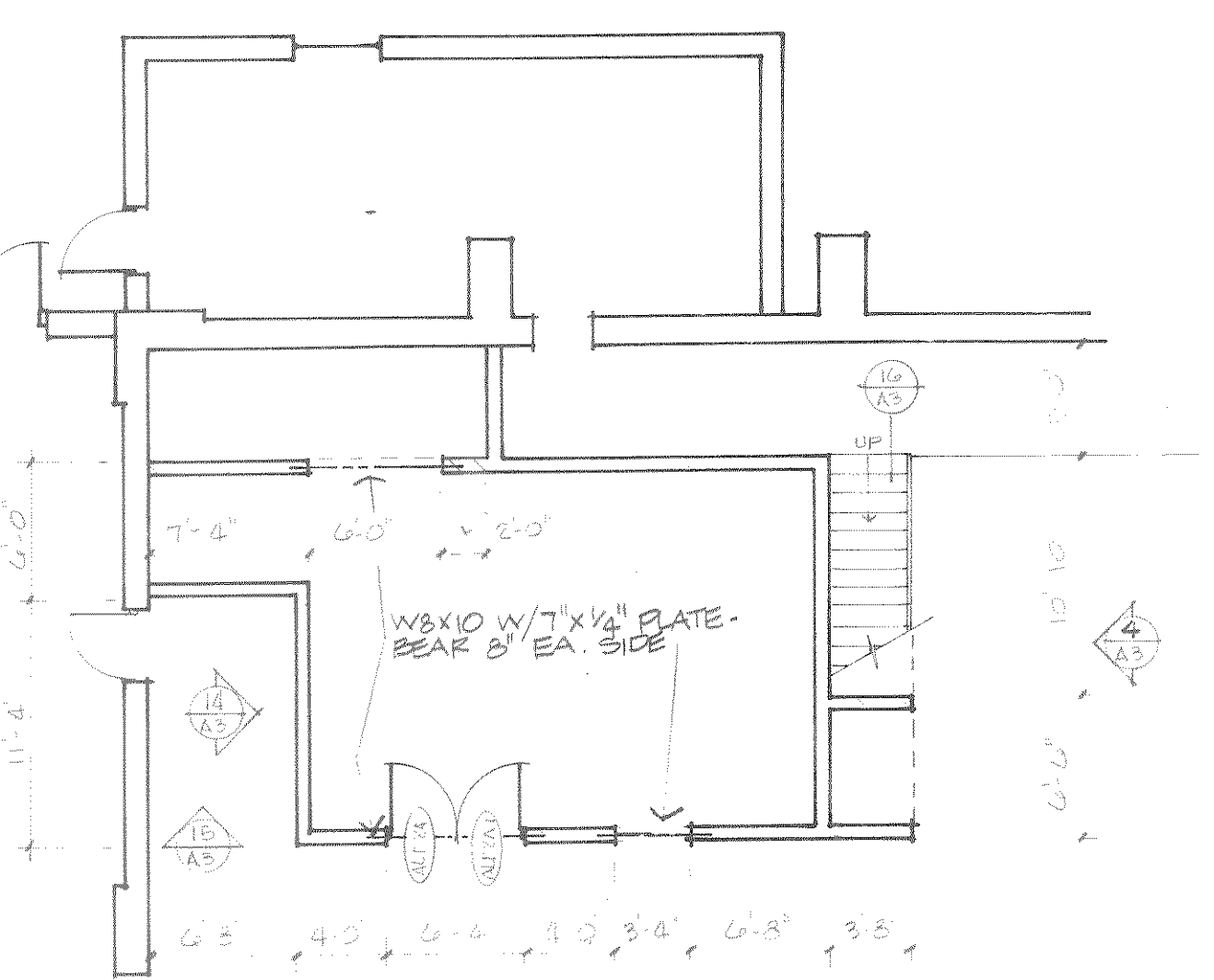
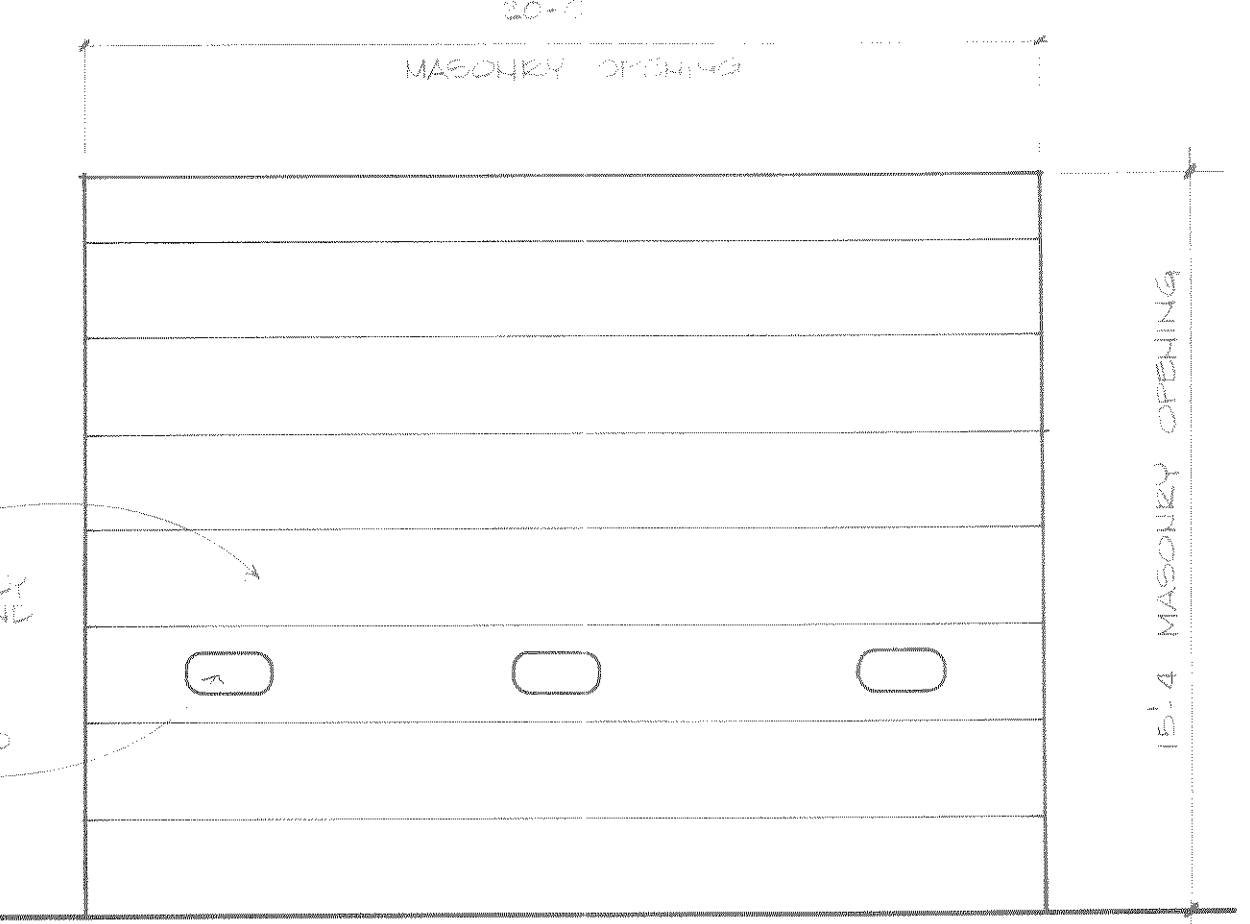


5 AB 6 AB

DOOR TYPES

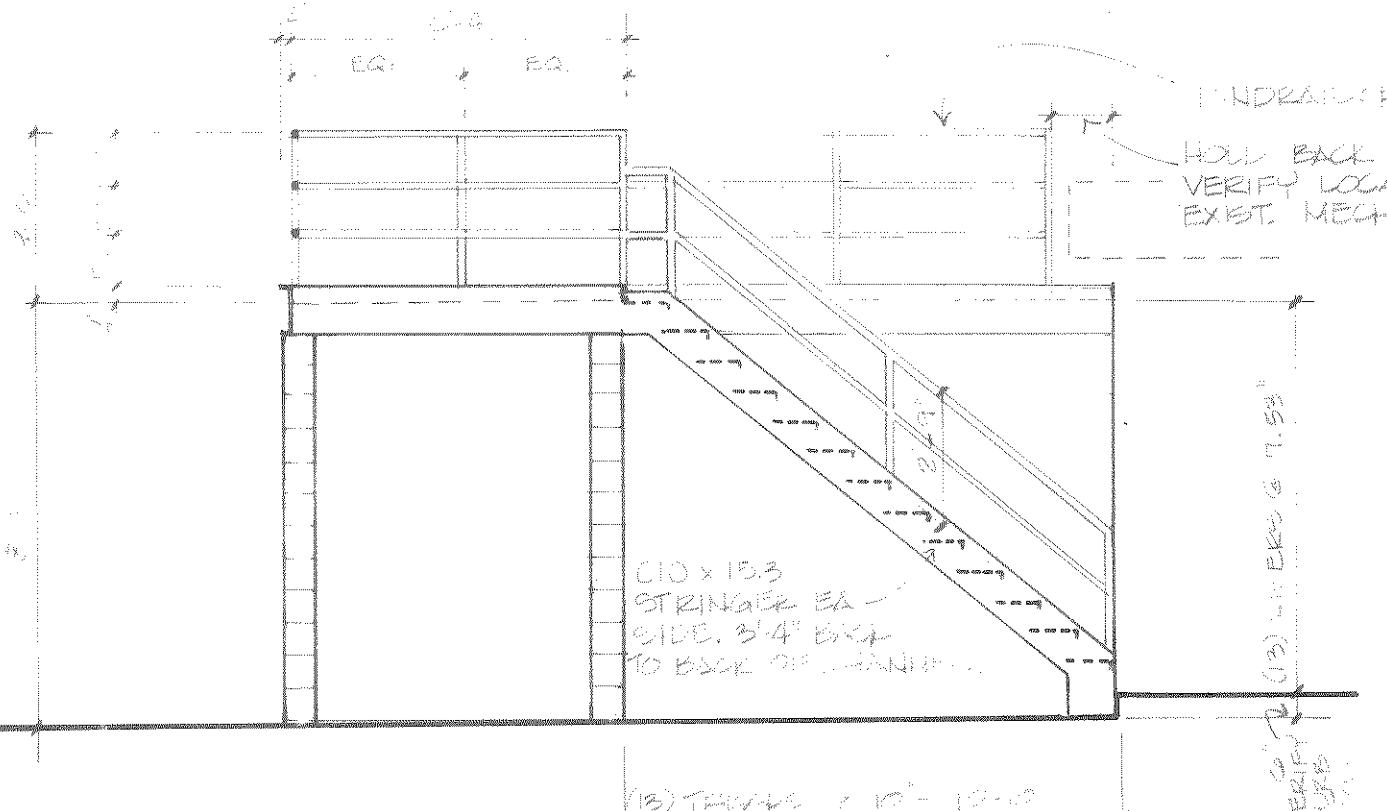
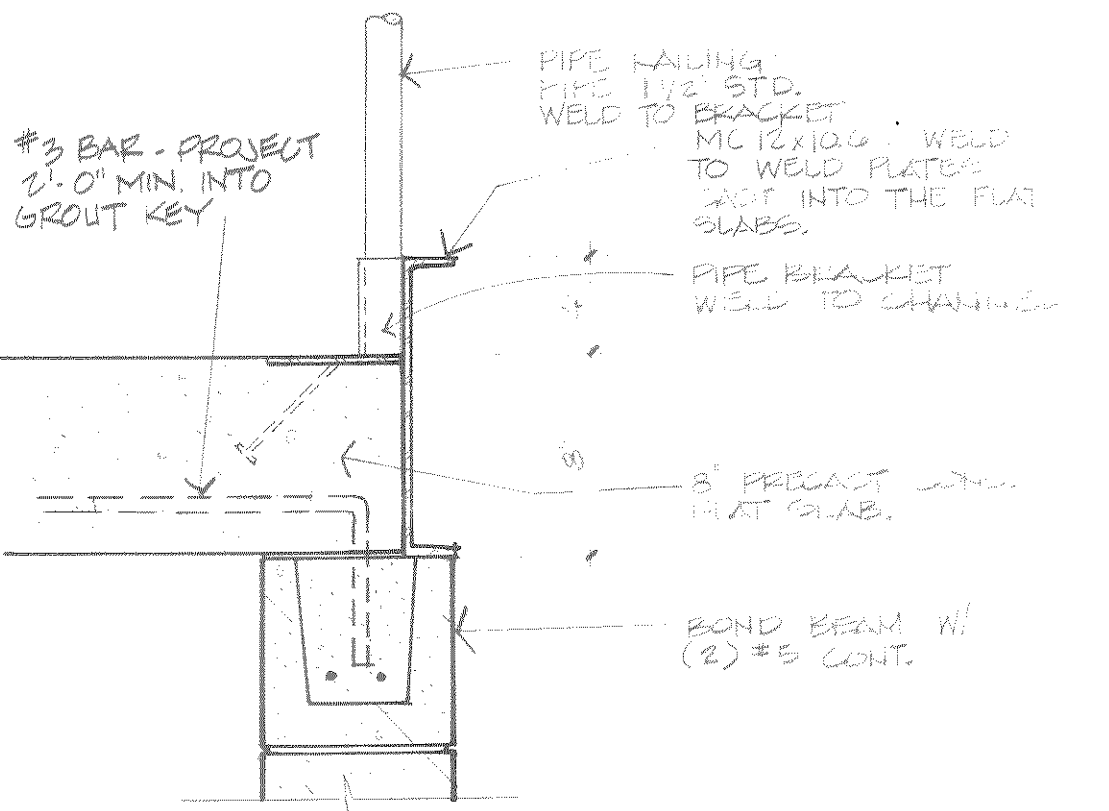


INSULATED OVERHEAD DOOR - SUPPLY W/ DOUBLE PNL STILES & HINGES
3 INSULATED LITES.



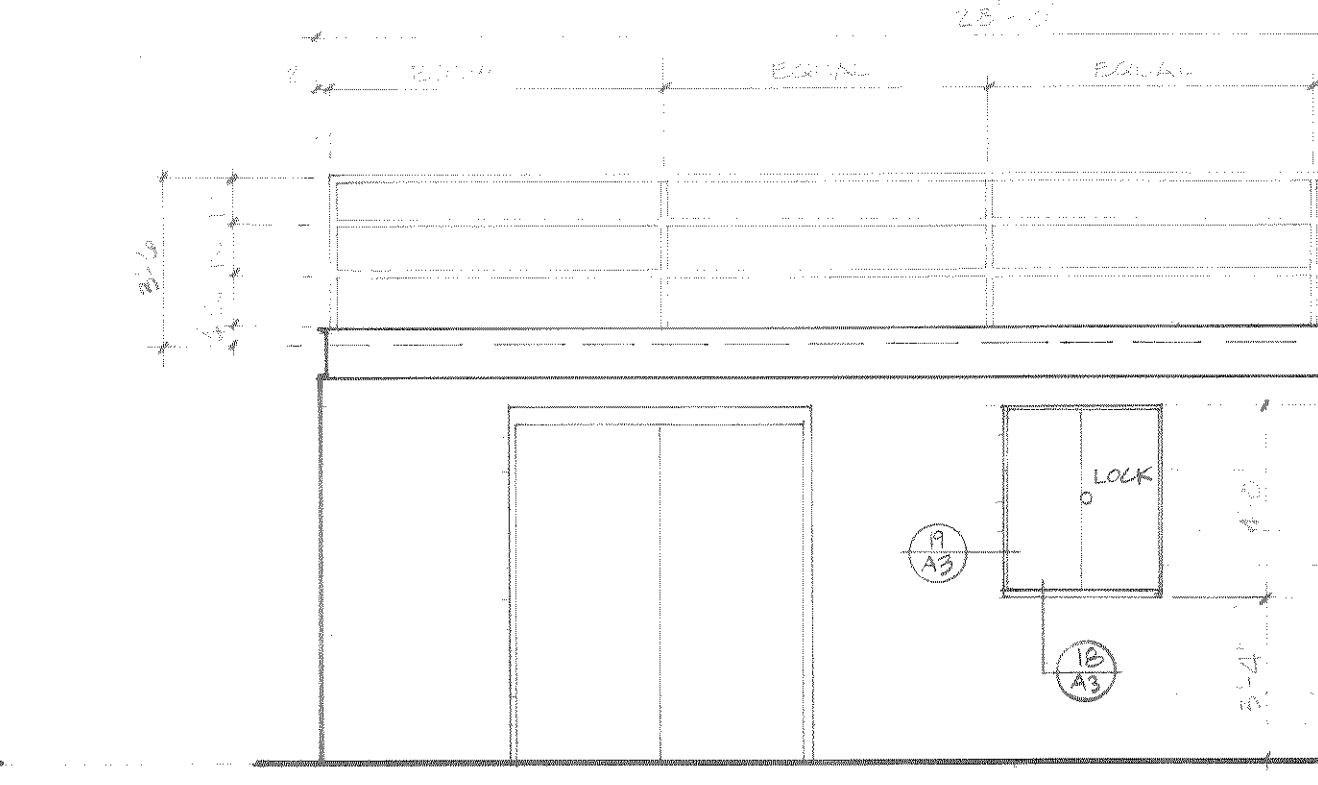
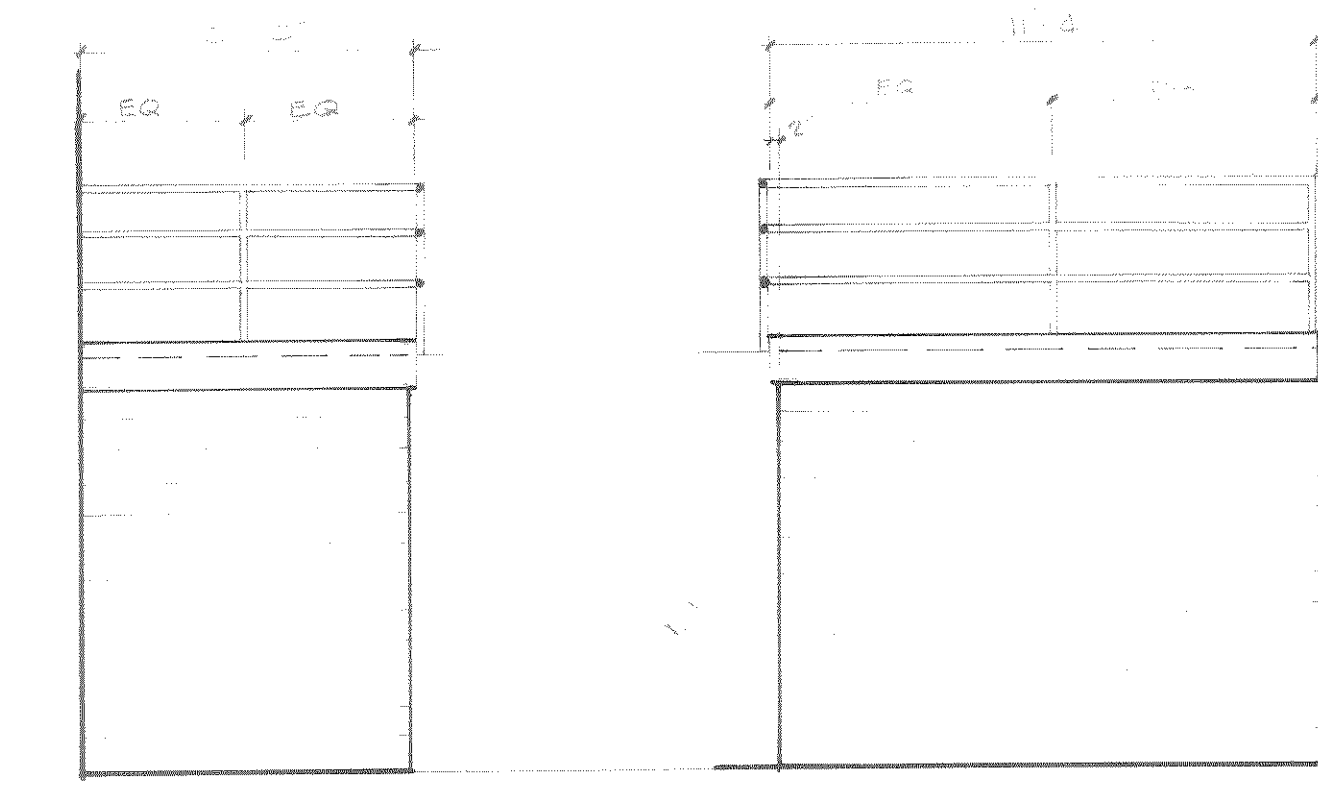
1 STORAGE ROOM ALT. 2A 1/2" x 1'-0"

2 MASONRY FRAMING 1/2" x 1'-0"



3 FLAT SLAB EDGE DETAIL 1/2" x 1'-0"

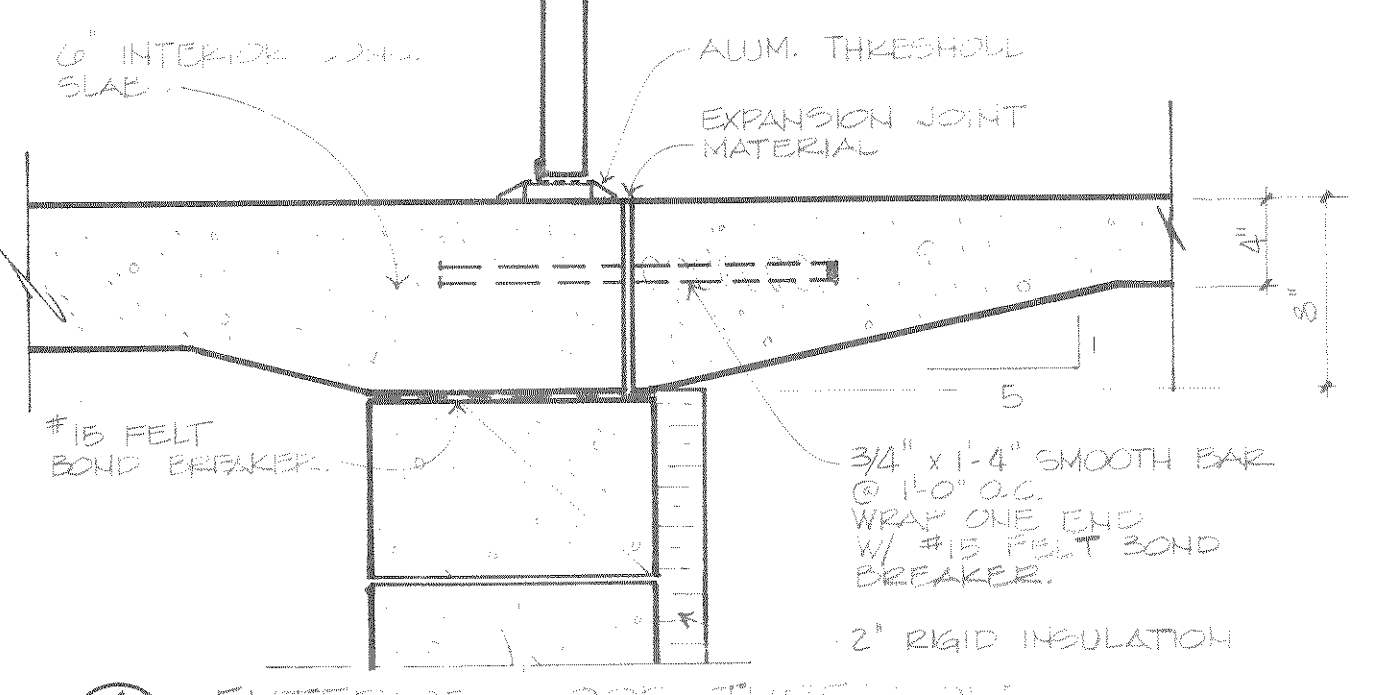
4 STAIR DETAIL 1'-0" x 1'-0"



15 ELEV. 1/4" x 1'-0"

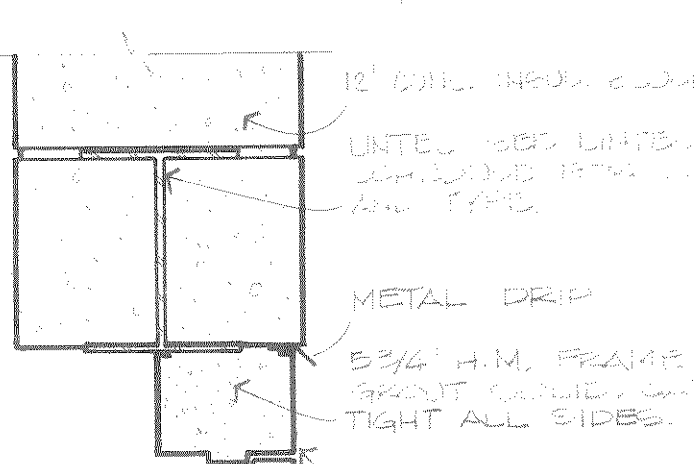
ELEVATION 1/4" x 1'-0"

ELEVATION 1/4" x 1'-0"



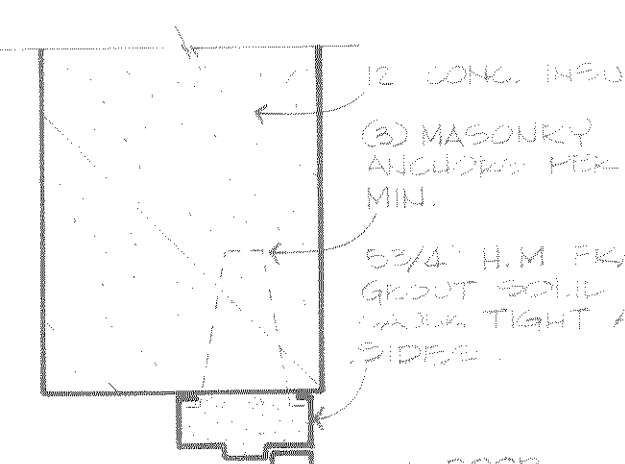
12 EXTERIOR DOOR THRESHOLD 1/2" x 1'-0"

9 JAMB DETAIL 1/2" x 1'-0"



11 HEAD 1/2" x 1'-0"

7 JAMB DETAIL 1/2" x 1'-0" UNITED TO ALTERNATE 2A



10 JAMB 1/2" x 1'-0"

NO.	BY	DATE	REVISIONS	ITEM	DESIGN	CHECKED



LINCOLN COUNTY
VEHICLE STORAGE ADDITION
TOMAHAWK, WISCONSIN

SCHEDULES/DETAILS
FILE NO. 89003
DATE AUG. 88
A3