

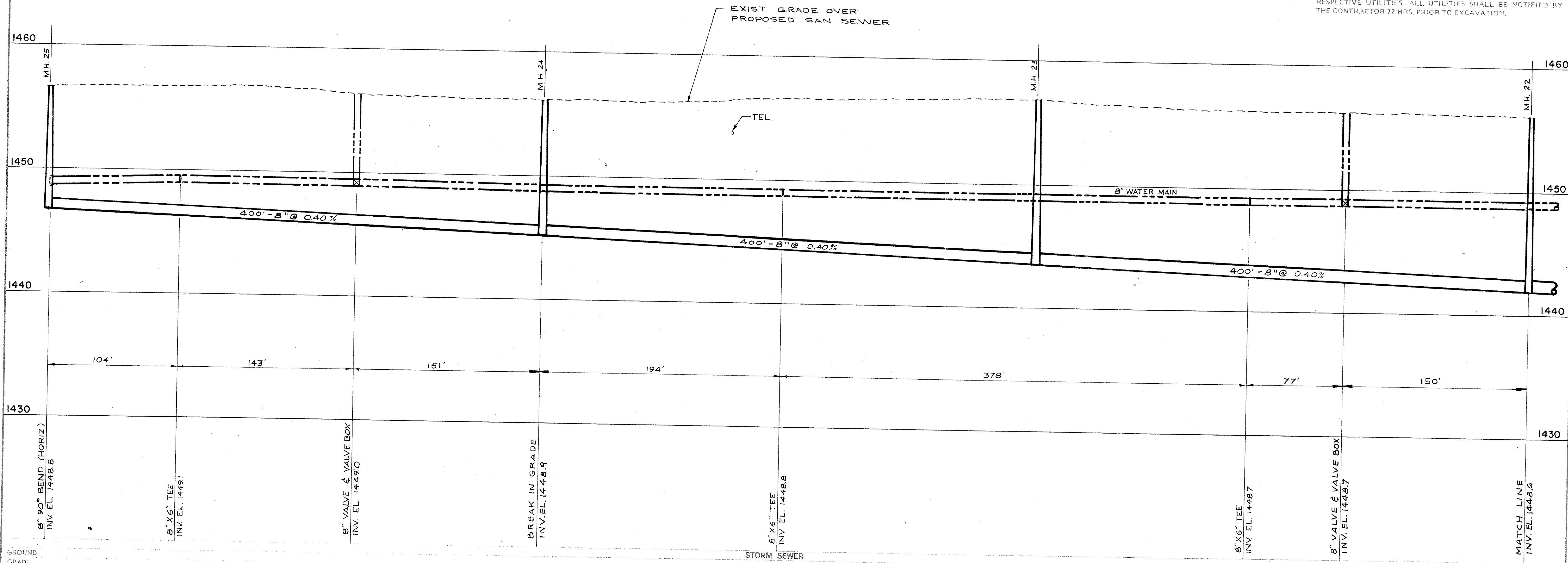
WISCONSIN
 WARREN
 H. WUNSCH
 E-12858
 PROFESSIONAL ENGINEER
 4/12/77

TANNERY ROAD

C.T.H. "CC"

SECTION I

NOTE:
 THE UTILITIES SHOWN IN PLAN AND PROFILE ARE INDICATED IN ACCORDANCE WITH AVAILABLE RECORDS. THE CONTRACTOR SHALL BE RESPONSIBLE FOR OBTAINING EXACT LOCATIONS AND ELEVATIONS OF ALL UTILITIES FROM THE OWNERS OF THE RESPECTIVE UTILITIES. ALL UTILITIES SHALL BE NOTIFIED BY THE CONTRACTOR 72 HRS. PRIOR TO EXCAVATION.



GROUND	GRADE	CUT	DISTANCE
1456.6	1446.70	9.9	
1456.1	1445.10	11.0	
1456.9	1443.50	13.4	
1456.1	1441.90	14.2	

DATE: APRIL, 1977
 DRAWN BY: [Signature]
 CHECKED BY: [Signature]

REVISIONS: [Table with NO., REVISIONS, DATE columns]

donohue & associates inc.
 CONSULTANTS • ENGINEERS • PLANNERS • ARCHITECTS
 SHEBOYGAN & WAUKESHA, WISCONSIN

SANITARY SEWER & WATER MAIN EXTENSIONS
 C.T.H. "CC" FROM 600' S. OF TANNERY RD.
 TO TANNERY RD. - 600' N. OF C.T.H. "CC"

TOMAHAWK, WISCONSIN

ALL RIGHTS RESERVED

PROJECT NO. 1715.0
 SHEET NO. 10 OF 11
 FILE NO. A-32250