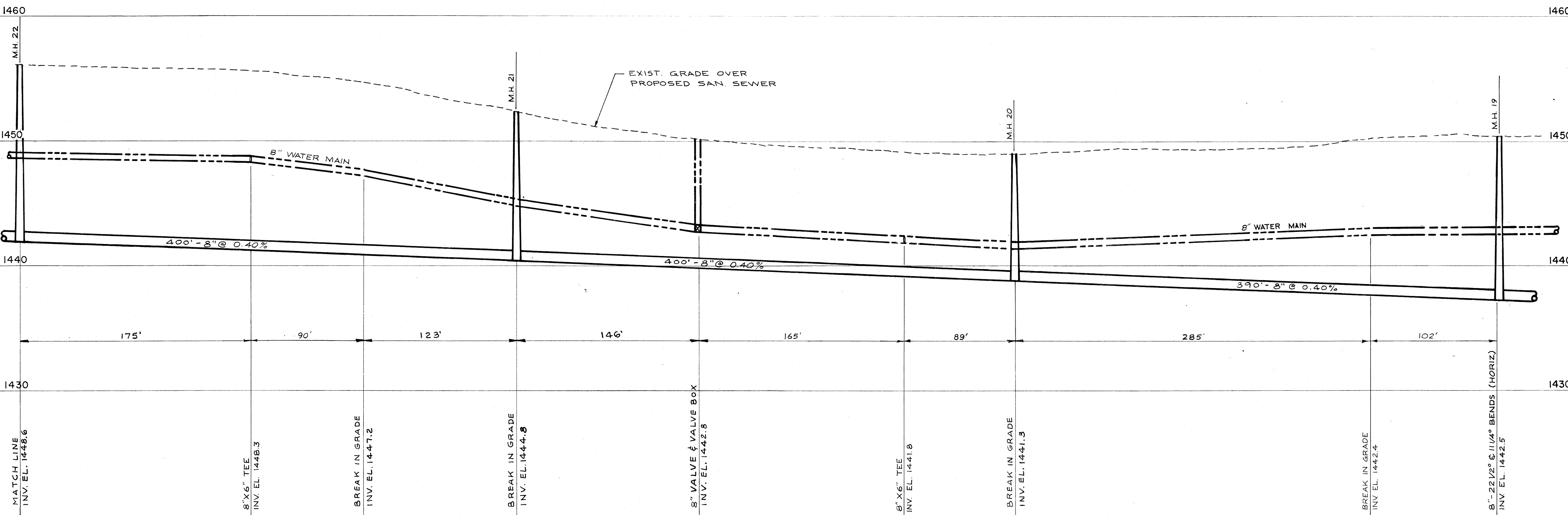


C.T.H. "CC"

SECTION I

NOTE:  
THE UTILITIES SHOWN IN PLAN AND PROFILE ARE INDICATED IN ACCORDANCE WITH AVAILABLE RECORDS. THE CONTRACTOR SHALL BE RESPONSIBLE FOR OBTAINING EXACT LOCATIONS AND ELEVATIONS OF ALL UTILITIES FROM THE OWNERS OF THE RESPECTIVE UTILITIES. ALL UTILITIES SHALL BE NOTIFIED BY THE CONTRACTOR 72 HRS. PRIOR TO EXCAVATION.



STORM SEWER		SANITARY SEWER	
GROUND	GRADE	GROUND	GRADE
1456.1	1441.90	1452.4	1440.30
	14.2		12.1
		1448.9	1438.70
			10.2
		1450.5	1437.14
			13.36

DATE: APRIL, 1977  
 DRAWN BY: R.D. Coy  
 CHECKED BY: [Signature]  
 PROJECT NO. 9 OF 11  
 SHEET NO. 9 OF 11  
 FILE NO. A-32251

SCALE: HORIZ. 1" = 20', VERT. 1" = 4'  
 DATE: 4/12/77  
 WISCONSIN PROFESSIONAL SURVEYOR  
 WARREN H. WUNSCH  
 E-12458  
 SHEBOYGAN, WISCONSIN

**SANITARY SEWER & WATER MAIN EXTENSIONS**  
 C.T.H. "CC" FROM 869' W. OF JERSEY LA.  
 TO 600' S. OF TANNERY RD.  
 TOMAHAWK, WISCONSIN

ALL RIGHTS RESERVED

CONSULTANTS • ENGINEERS • PLANNERS • ARCHITECTS  
**donohue & associates inc.**  
 SHEBOYGAN & WAUKESHA, WISCONSIN