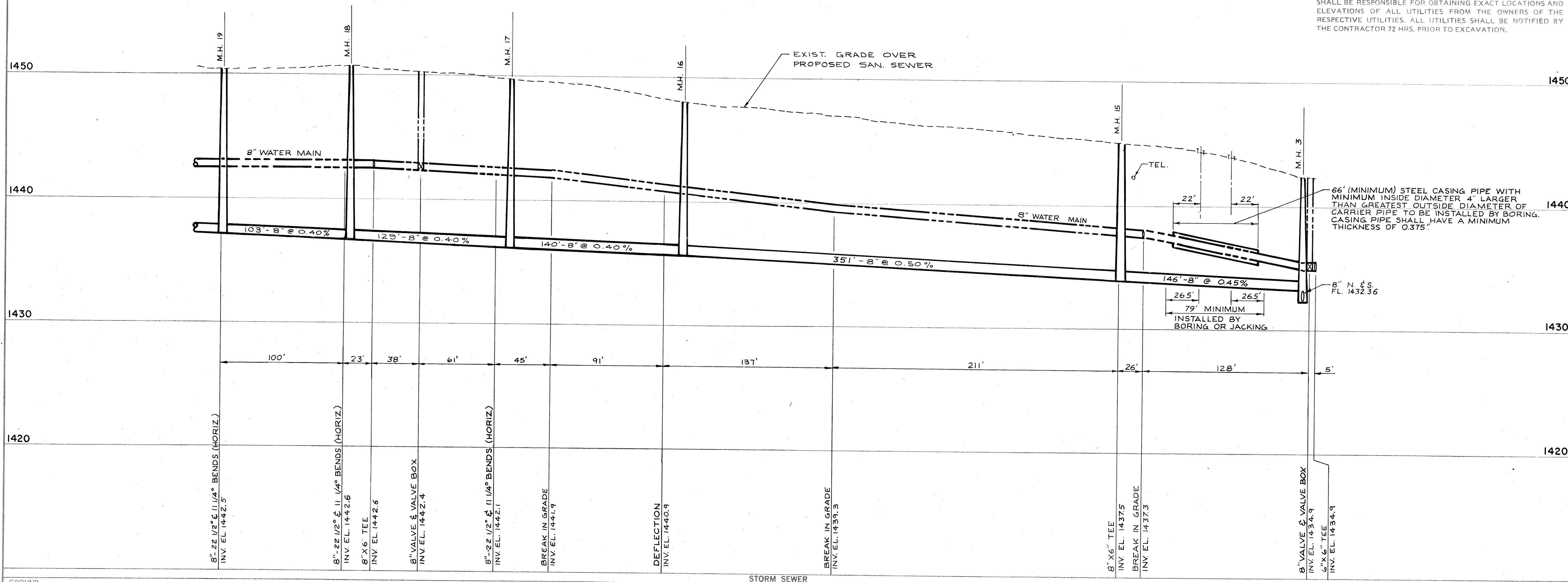


C.T.H. "CC"

SECTION I

NOTE:
 THE UTILITIES SHOWN IN PLAN AND PROFILE ARE INDICATED IN ACCORDANCE WITH AVAILABLE RECORDS. THE CONTRACTOR SHALL BE RESPONSIBLE FOR OBTAINING EXACT LOCATIONS AND ELEVATIONS OF ALL UTILITIES FROM THE OWNERS OF THE RESPECTIVE UTILITIES. ALL UTILITIES SHALL BE NOTIFIED BY THE CONTRACTOR 72 HRS. PRIOR TO EXCAVATION.



GROUND	GRADE	CUT	DISTANCE
1450.4	1437.14	13.3	
1450.7	1436.73	14.0	
1449.7	1436.21	13.5	
1448.0	1435.65	12.3	
1445.0	1433.89	11.2	
1442.3	1432.36	10.0	

SANITARY SEWER & WATER MAIN EXTENSIONS

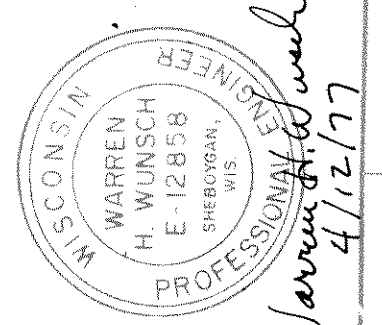
C.T.H. "CC" FROM JERSEY LA. TO 869' W. OF JERSEY LA.

TOMAHAWK, WISCONSIN

DATE APRIL, 1977
 DRAWN BY [Signature]
 CHECKED BY [Signature]

REVISIONS
 NO. DATE

donohue & associates inc.
 CONSULTANTS • ENGINEERS • PLANNERS • ARCHITECTS
 SHEBOYGAN & WAUKESHA, WISCONSIN



ALL RIGHTS RESERVED
 PROJECT NO. 1715.0
 SHEET NO. 8 OF 11
 FILE NO. A-32252