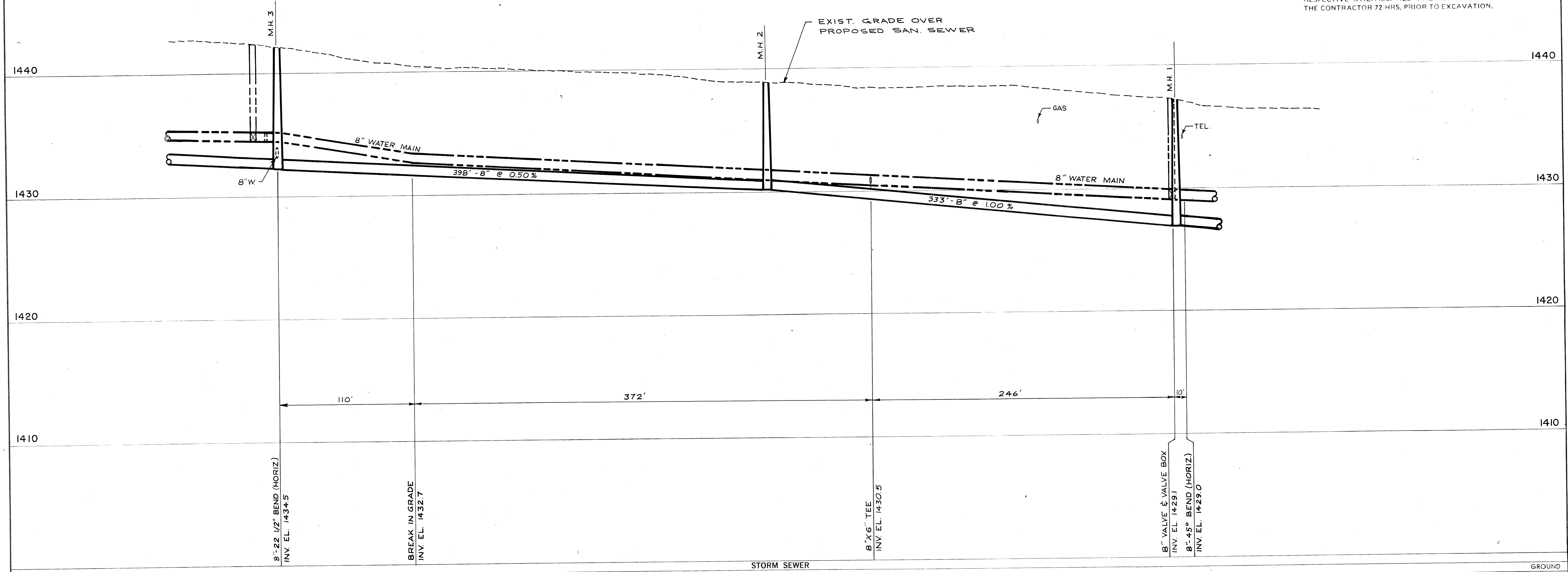


SECTION I

NOTE:
 THE UTILITIES SHOWN IN PLAN AND PROFILE ARE INDICATED IN ACCORDANCE WITH AVAILABLE RECORDS. THE CONTRACTOR SHALL BE RESPONSIBLE FOR OBTAINING EXACT LOCATIONS AND ELEVATIONS OF ALL UTILITIES FROM THE OWNERS OF THE RESPECTIVE UTILITIES. ALL UTILITIES SHALL BE NOTIFIED BY THE CONTRACTOR 72 HRS. PRIOR TO EXCAVATION.



	GROUND	GRADE	CUT	DISTANCE
GROUND	1442.3	1438.9	1437.3	
GRADE	1432.36	1427.03	1427.03	
CUT	9.9	8.5	10.3	
DISTANCE				

DATE: APRIL, 1977
 DRAWN BY: R.J. Coy
 CHECKED BY: [Signature]

SCALE: HORIZ. 1" = 40', VERT. 1" = 4'

donohue & associates inc.
 CONSULTANTS • ENGINEERS • PLANNERS • ARCHITECTS
 SHEBOYGAN & WAUKESHA, WISCONSIN

SANITARY SEWER & WATER MAIN EXTENSIONS
 C.T.H. "CC" FROM 660' W. OF RIVER ST. TO JERSEY LA.
 TOMAHAWK, WISCONSIN

ALL RIGHTS RESERVED

PROJECT NO.	1715.0
SHEET NO.	3 OF 11
FILE NO.	A-32257

KEM