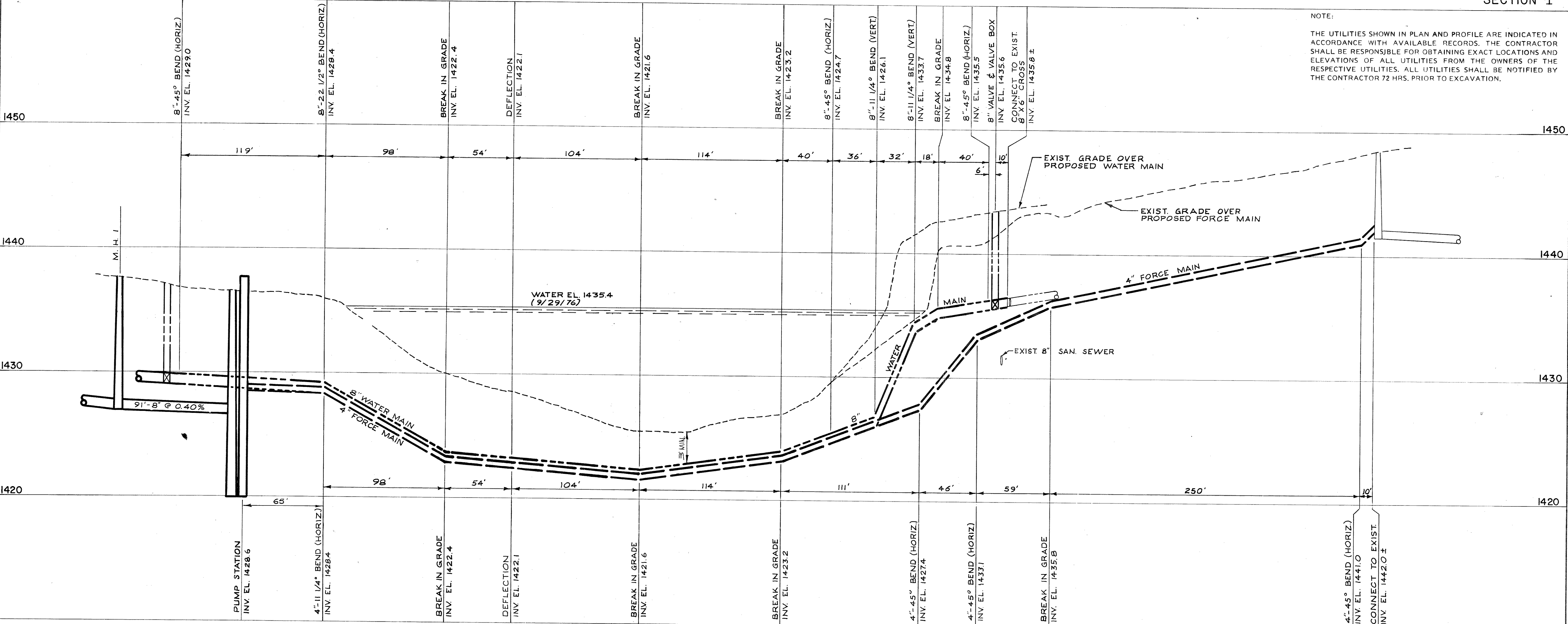


C.T.H. "CC"

SECTION I

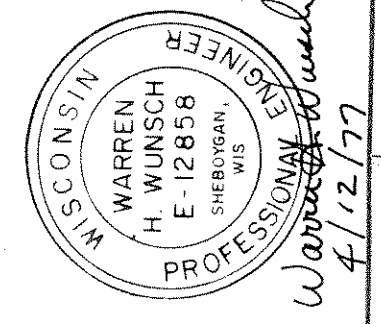


NOTE:
 THE UTILITIES SHOWN IN PLAN AND PROFILE ARE INDICATED IN ACCORDANCE WITH AVAILABLE RECORDS. THE CONTRACTOR SHALL BE RESPONSIBLE FOR OBTAINING EXACT LOCATIONS AND ELEVATIONS OF ALL UTILITIES FROM THE OWNERS OF THE RESPECTIVE UTILITIES. ALL UTILITIES SHALL BE NOTIFIED BY THE CONTRACTOR 72 HRS. PRIOR TO EXCAVATION.

GROUND	GRADE	CUT	DISTANCE
1437.3	1436.6	10.3	9.9
1427.03	1426.67	10.3	9.9

SANITARY SEWER & WATER MAIN EXTENSIONS
 C.T.H. "CC" FROM 319' E. OF RIVER ST. TO 660' W. OF RIVER ST.
 TOMAHAWK, WISCONSIN

PROJECT NO.	1715.0
SHEET NO.	2 OF 11
FILE NO.	A-32258



DATE	APRIL, 1977
DRAWN BY	R.D. G.
CHECKED BY	R.D. G.
NO.	
REVISIONS	
DATE	

donohue & associates inc.
 CONSULTANTS • ENGINEERS • PLANNERS • ARCHITECTS
 SHEBOYGAN & WAUKESHA, WISCONSIN

QAC
 KEM