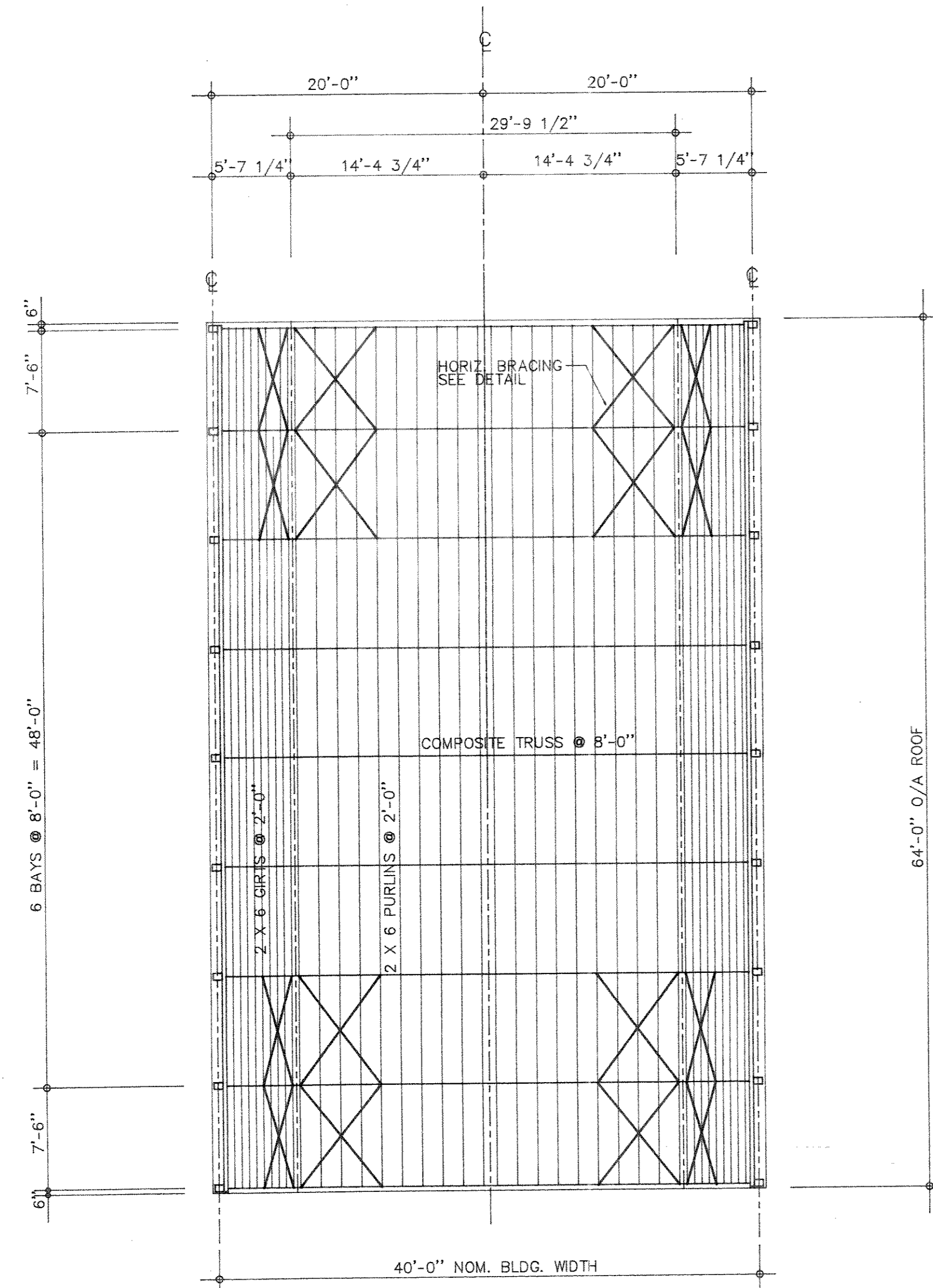
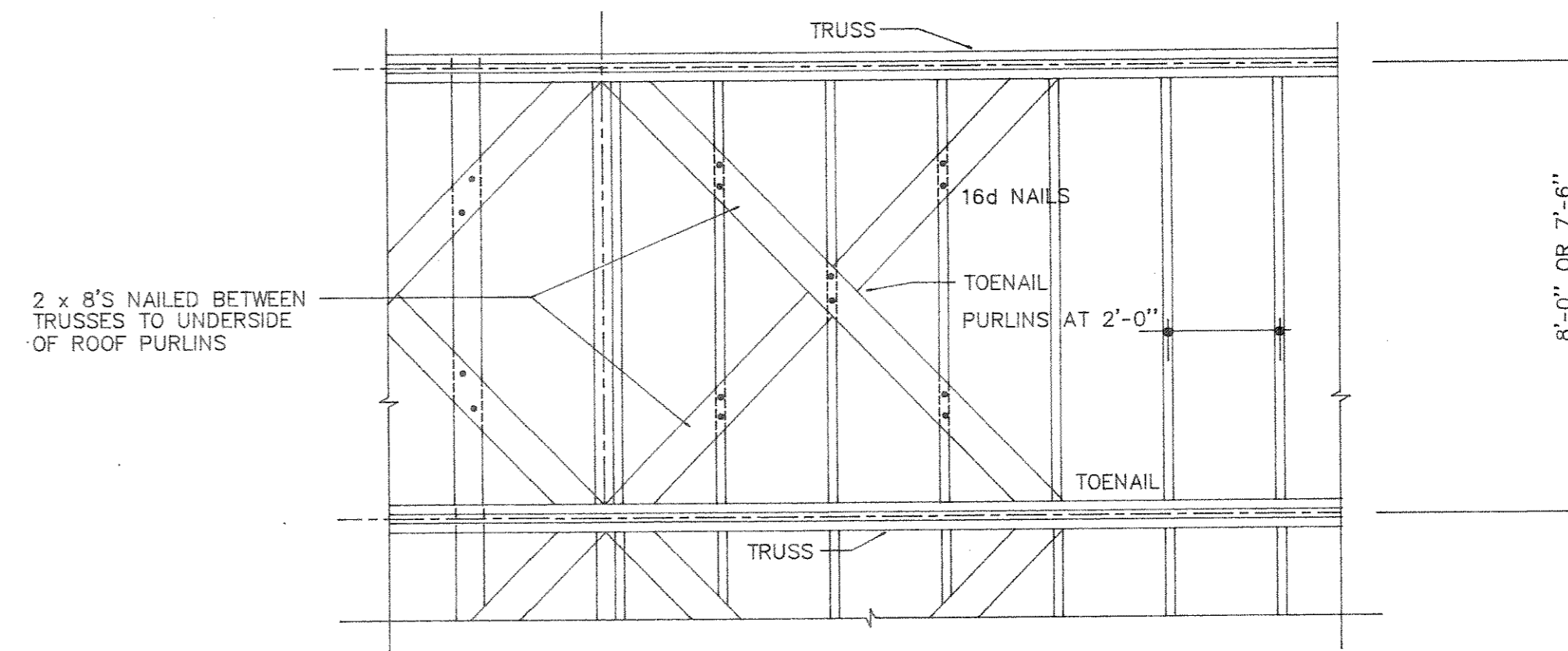


DESIGN PARAMETERS

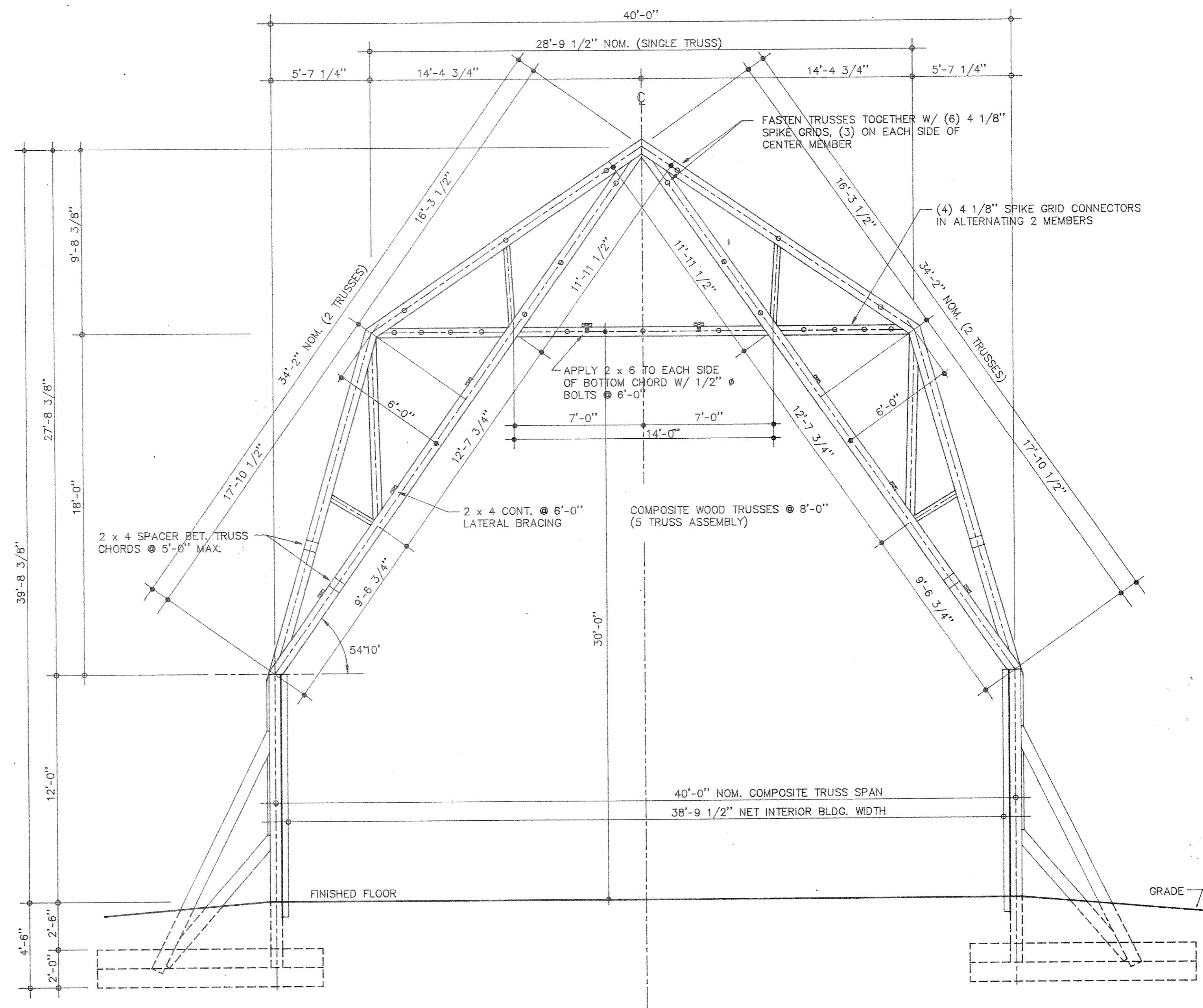
DEAD LOAD : 5 PSF
 LIVE LOAD : 40 PSF
 TOTAL LOAD : 45 PSF
 WIND LOAD : 20 PSF



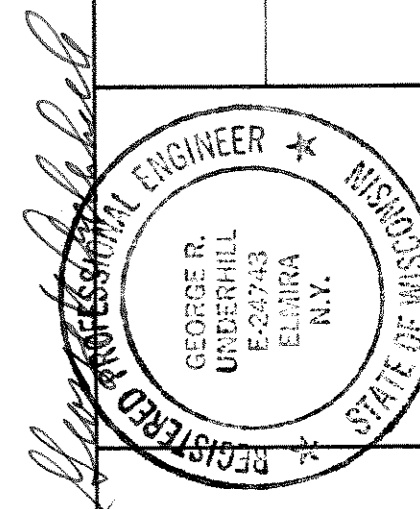
ROOF FRAMING PLAN
 SCALE: 1/8"=1'-0"



BRACING DETAILS
 SCALE: 3/8"=1'-0"



TYPICAL TRANSVERSE SECTION
 SCALE: 1/4"=1'-0"



ORFI & UNDERHILL
 ARCHITECTS & ENGINEERS
 ELMIRA, NEW YORK
 TEL. (607) 734 2757

ADVANCED STORAGE TECHNOLOGY
 * MINNEAPOLIS, MINN. *
 * ELMIRA, N.Y. *
 * HARTFORD, CONN. *

PROPOSED NEW (40' X 64' X 12')
 SALT STORAGE BUILDING
 MERRILL, WISCONSIN
 ROOF FRAMING PLAN & DETAILS

JOB NO.
 87349

DWG. NO.
 3