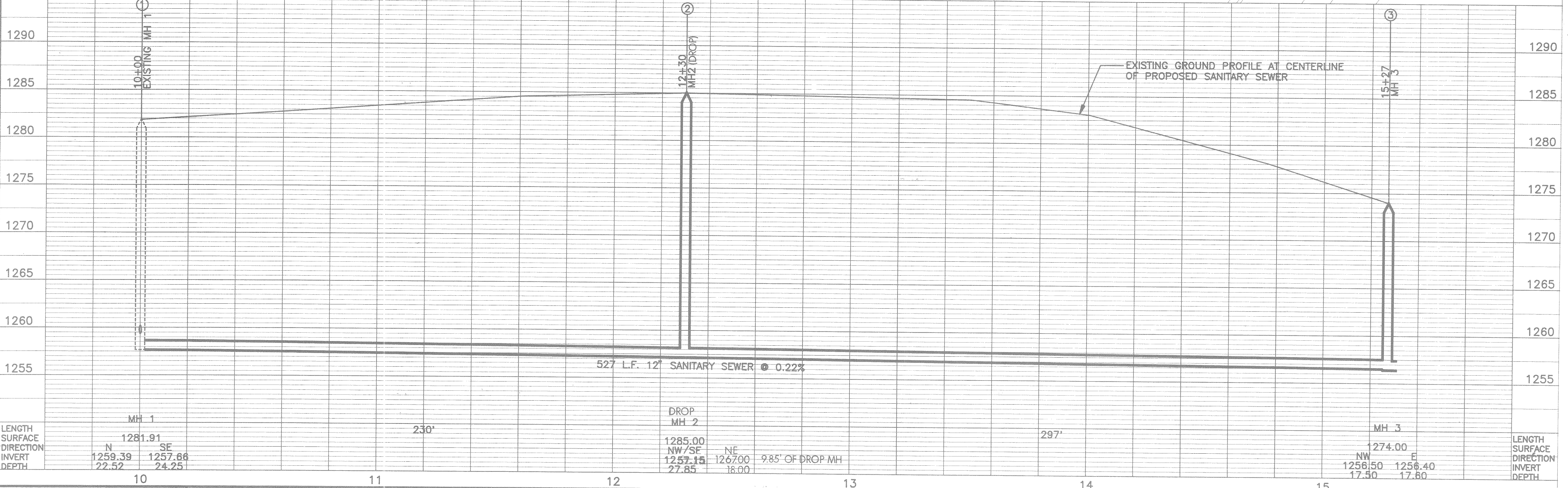
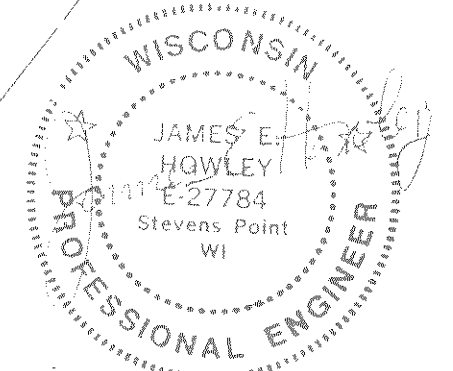
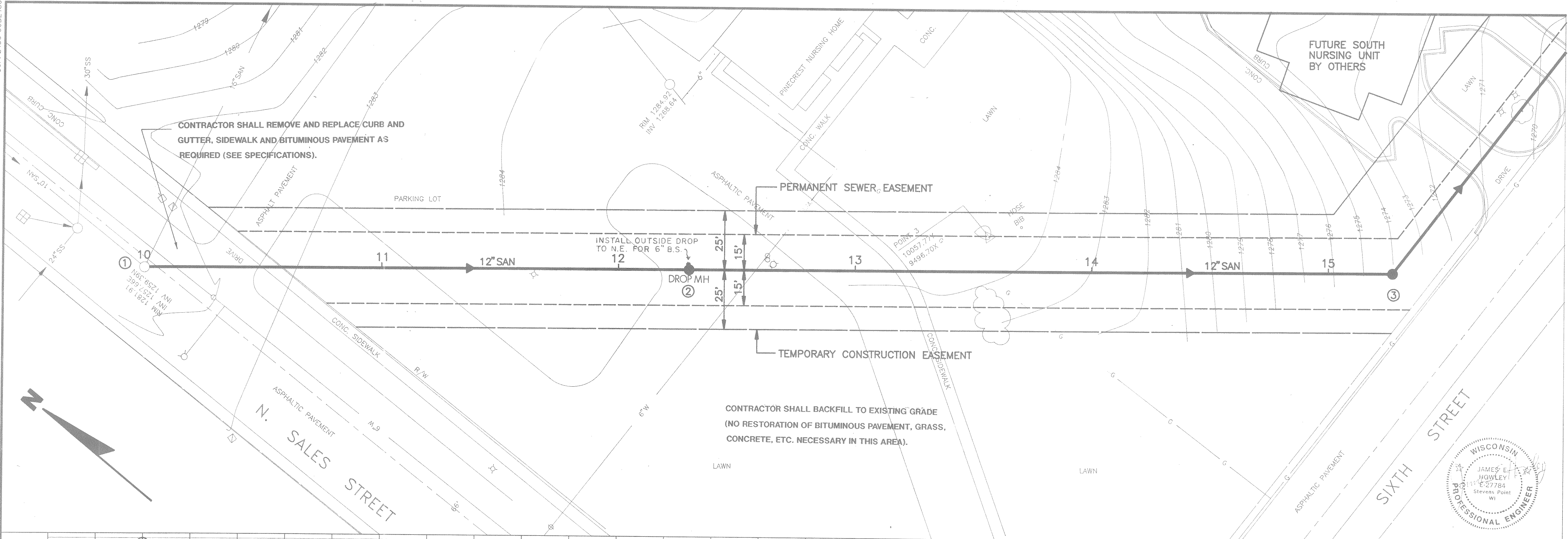


GOPP2436 C0B2436



LENGTH	MH 1		230'	DROP MH 2		297'	MH 3		LENGTH
SURFACE	N	SE		NW/SF	NE		NW	E	SURFACE
DIRECTION	1281.91	1257.66		1285.00	1267.00		1274.00	1256.40	DIRECTION
INVERT	1259.39	1257.66		1257.15	1267.00		1256.50	1256.40	INVERT
DEPTH	22.52	24.25		27.85	18.00		17.50	17.60	DEPTH

Revisions:	Job No: 10418.13	Designed: TMB	Date: 1-27-92
	Scale: H1":20" V1":5"	Drawn: DLR	Date: 1-31-92
		Checked:	Date:

GREMMER-OHM
ARCHITECTS & ENGINEERS
908 POST ROAD, PLOVER, WISCONSIN 715-341-4363

LINCOLN COUNTY
PINECREST NURSING HOME

SANITARY SEWER PLAN/PROFILE
STA. 10+00 TO STA. 15+27

PS1