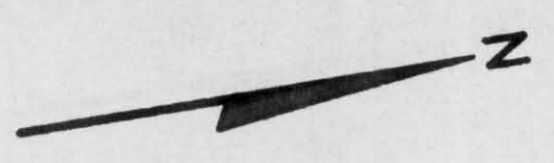
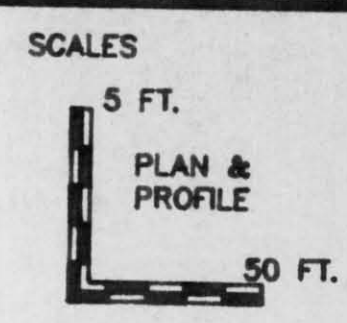
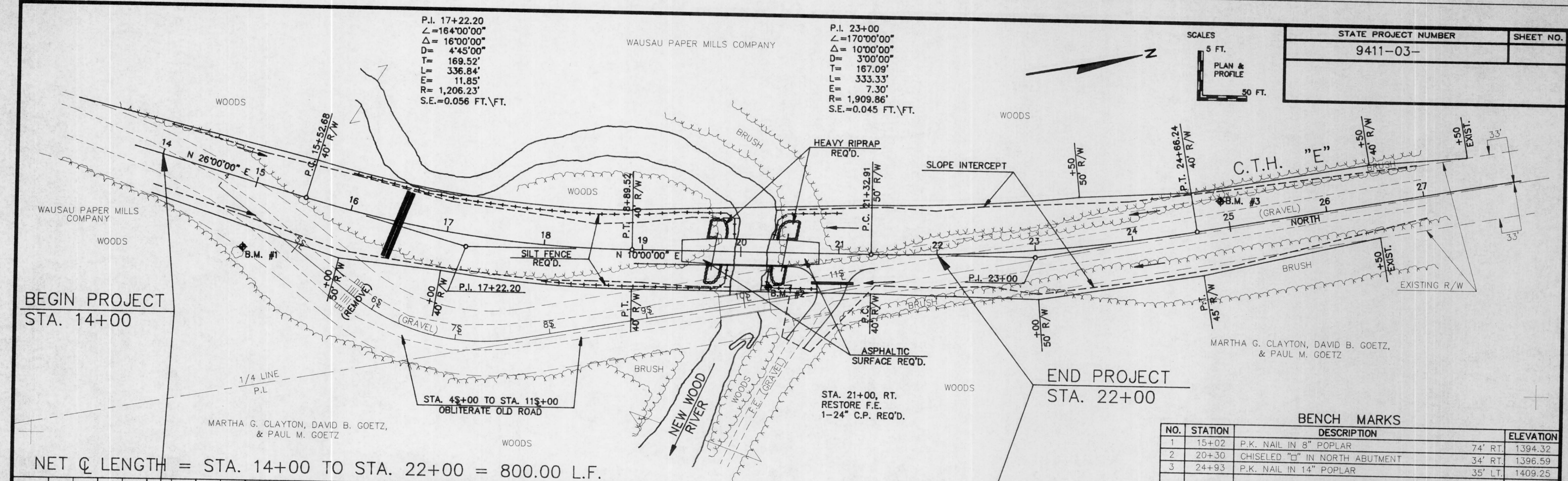


STATE PROJECT NUMBER	SHEET NO.
9411-03-	



P.I. 17+22.20
 $\angle = 164^{\circ}00'00''$
 $\Delta = 16^{\circ}00'00''$
 $D = 4^{\circ}45'00''$
 $T = 169.52'$
 $L = 336.84'$
 $E = 11.85'$
 $R = 1,206.23'$
 $S.E. = 0.056 \text{ FT.} \sqrt{\text{FT.}}$

P.I. 23+00
 $\angle = 170^{\circ}00'00''$
 $\Delta = 10^{\circ}00'00''$
 $D = 3^{\circ}00'00''$
 $T = 167.09'$
 $L = 333.33'$
 $E = 7.30'$
 $R = 1,909.86'$
 $S.E. = 0.045 \text{ FT.} \sqrt{\text{FT.}}$



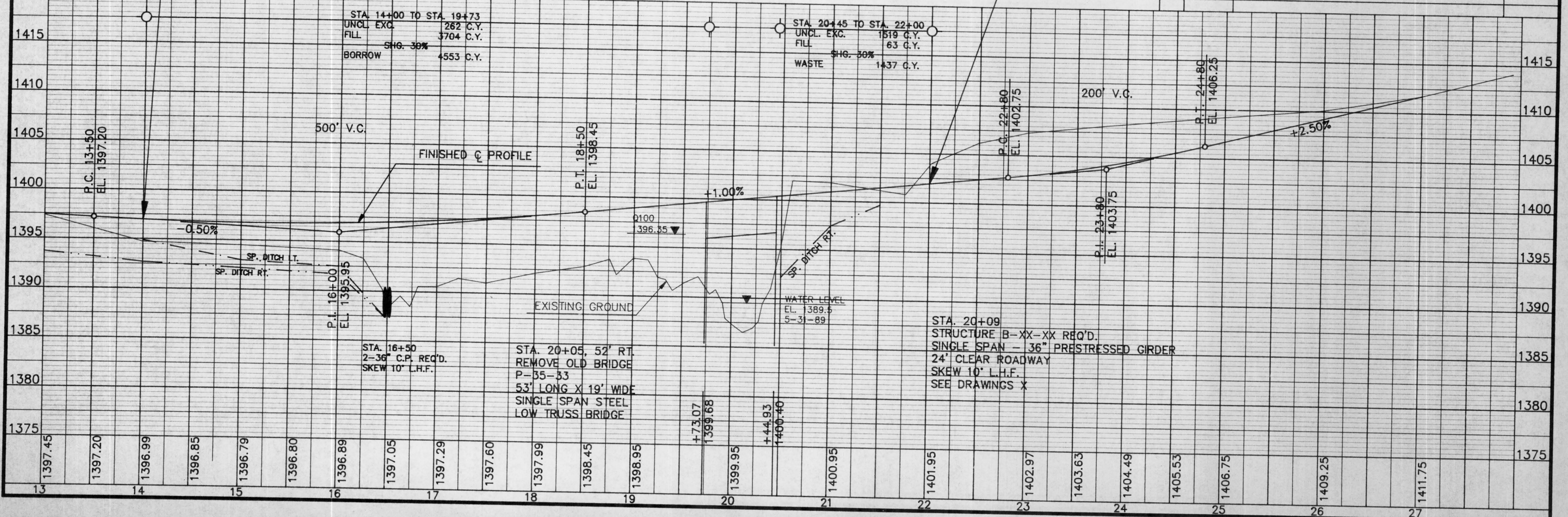
BEGIN PROJECT
 STA. 14+00

END PROJECT
 STA. 22+00

NET \bar{C} LENGTH = STA. 14+00 TO STA. 22+00 = 800.00 L.F.

BENCH MARKS

NO.	STATION	DESCRIPTION	ELEVATION
1	15+02	P.K. NAIL IN 8" POPLAR	74' RT. 1394.32
2	20+30	CHISELED "C" IN NORTH ABUTMENT	34' RT. 1396.59
3	24+93	P.K. NAIL IN 14" POPLAR	35' LT. 1409.25



STA. 14+00 TO STA. 19+73
 UNCL. EXC. 282 C.Y.
 FILL 3704 C.Y.
 SHG. 30%
 BORROW 4553 C.Y.

STA. 20+45 TO STA. 22+00
 UNCL. EXC. 1519 C.Y.
 FILL 63 C.Y.
 SHG. 50%
 WASTE 1437 C.Y.

STA. 16+50
 2-36" C.P. REQ'D.
 SKEW 10' L.H.F.

STA. 20+05, 52' RT.
 REMOVE OLD BRIDGE
 P-35-33
 53' LONG X 19' WIDE
 SINGLE SPAN STEEL
 LOW TRUSS BRIDGE

STA. 20+09
 STRUCTURE B-XX-XX REQ'D.
 SINGLE SPAN - 36" PRESTRESSED GIRDER
 24' CLEAR ROADWAY
 SKEW 10' L.H.F.
 SEE DRAWINGS X