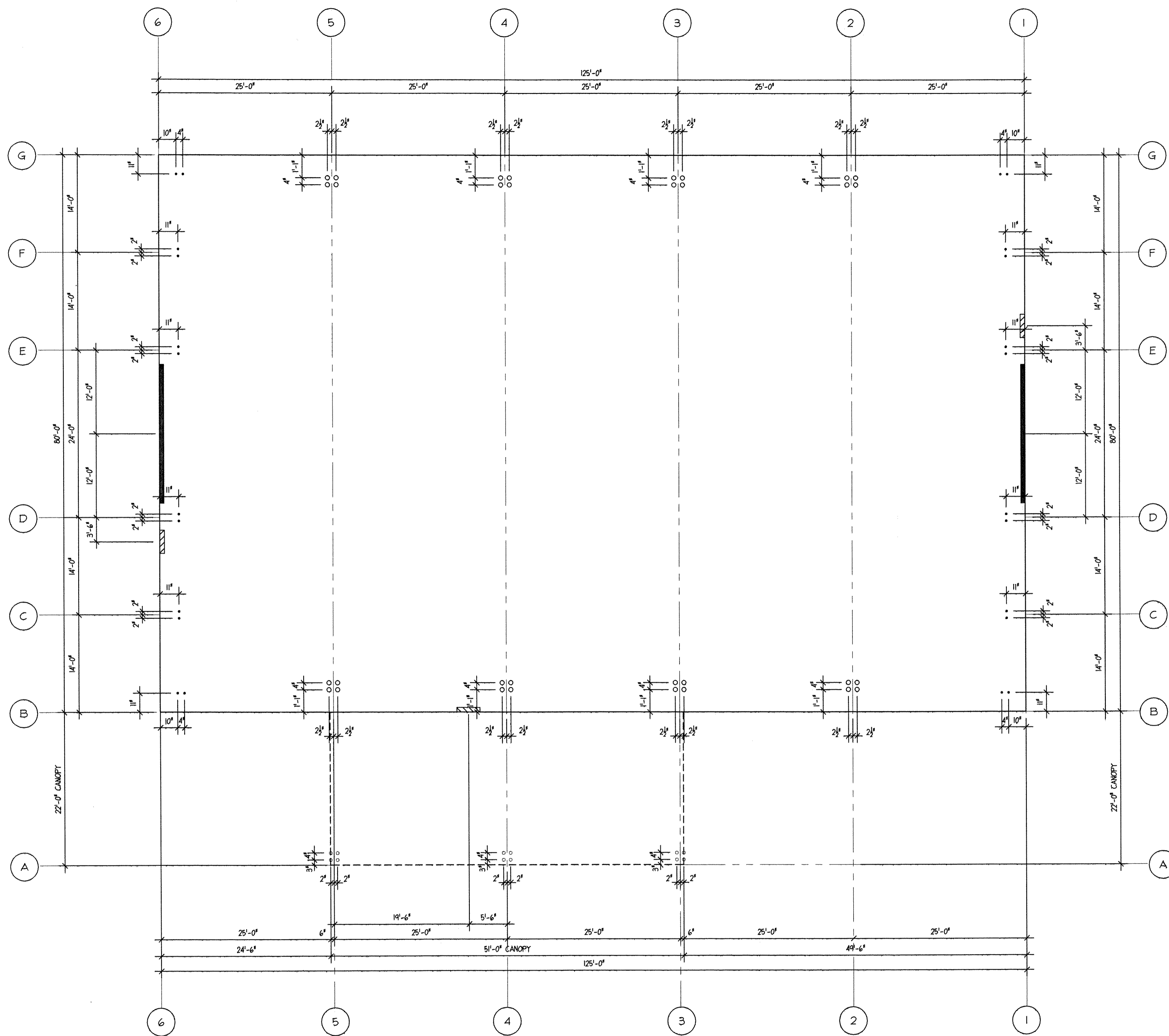


This document contains confidential or proprietary information of URBAN CONSTRUCTION COMPANY. Neither this document nor the information herein is to be reproduced, distributed, used or disclosed either in whole or in part except as specifically authorized by URBAN CONSTRUCTION COMPANY.



**S101** ANCHOR BOLT PLAN  
1/8" = 1'-0"

ANCHOR BOLTS									
TYPE A	TYPE B	SYMBOL	DIA.	QTY.	STYLE	LENGTH	THRD.	HOOK	PROJ.
		•	3/4"	24	A	12"	2 1/2"	N/A	2"
		o	1"	12	A	15"	3"	N/A	2 1/2"
		o	1 1/4"	32	B	24"	6"	4"	3 1/2"

**URBAN CONSTRUCTION COMPANY**  
 2005 Cassidy Drive - Wausau, WI 54401  
 Tel: (715) 875-9425 - FAX: (715) 875-9781  
 email: urban@dwave.net

REVISIONS	
NUMBER	DESCRIPTION

**LINCOLN COUNTY HIGHWAY DEPARTMENT**  
 MERRILL, WI

KEY

CONSULTANT

DRAWN BY Ellen Kaldunski	DATE 5/16/01
CHECKED BY	DATE
SCALE 1/8" = 1'-0"	FILE NAME 01516S101
CONTRACT NUMBER 01-166	
DRAWING NUMBER 01516	
DESCRIPTION <b>ANCHOR BOLT PLAN</b>	
SHEET NUMBER <b>S101</b>	
ENDING ORDER SHEET OF	