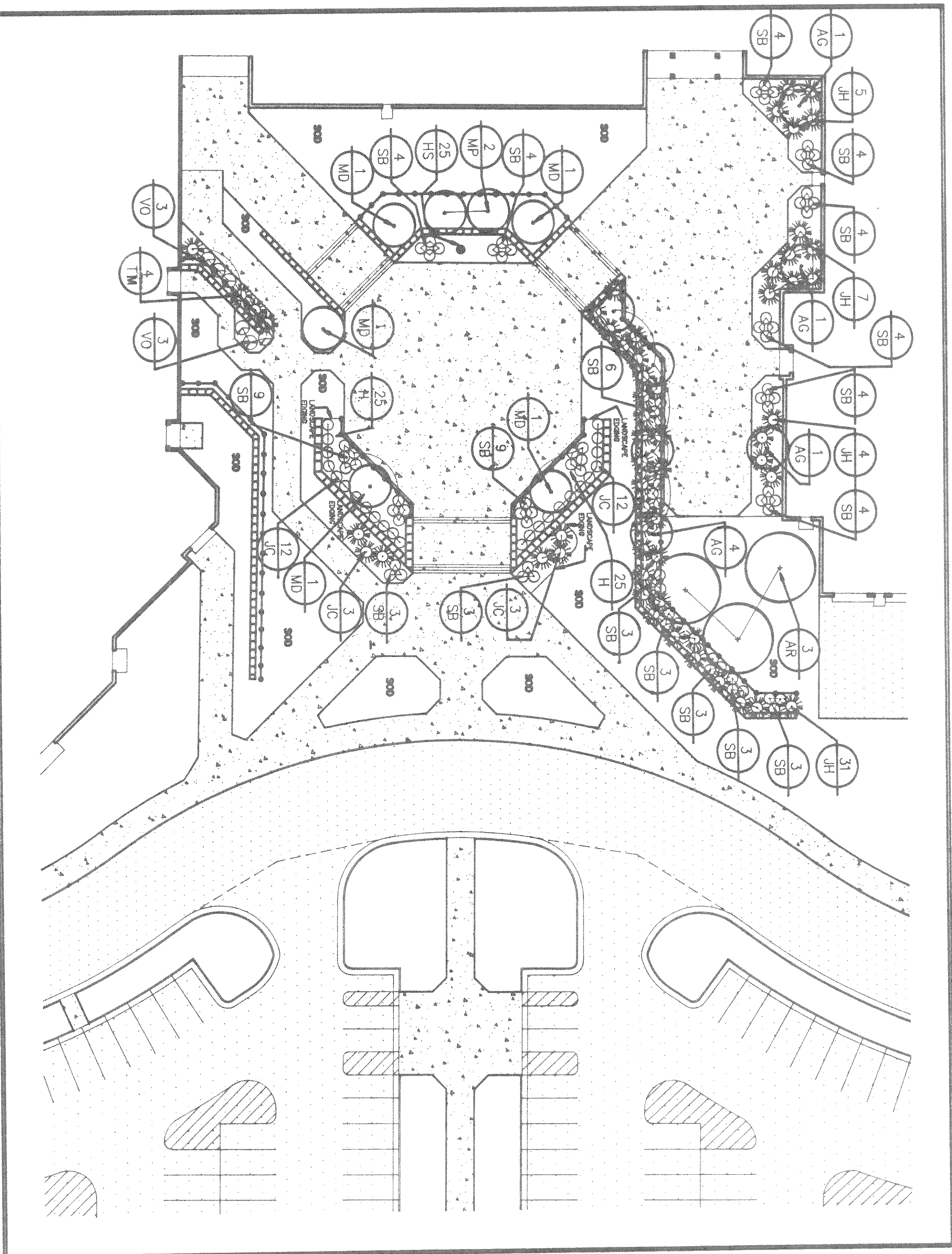


PLAZA LAYOUT  
SCALE 1" = 30'



PLAZA LANDSCAPING  
SCALE 1" = 30'

**GENERAL NOTES**

1. THE TENNIS COURTS (PAVING, FENCING, SURFACING, STRIPING, UNDERDRAINS) SHALL BE BID AS AN ALTERNATE TO THE BASE BID.
2. INSTALL THE TENNIS COURT NET POSTS IN ACCORDANCE WITH THE MANUFACTURERS RECOMMENDATIONS. THE LOCATION OF THE POSTS SHOWN ARE FOR REFERENCE ONLY.
3. THE TENNIS COURTS SHALL BE COLORED WITH DARK GREEN WITH IN THE PLAYING BOUNDARIES AND LIGHT GREEN IN THE EXTERIOR AREAS.
4. SEE SHEET S29 FOR THE DIMENSIONS TO THE OVERALL SITE LAYOUT.
5. SAWCUT THE PROPOSED BITUMINOUS FOR THE INSTALLATION OF THE TENNIS COURTS. FENCE POSTS AND NET POSTS CORING THROUGH THE BITUMINOUS WILL NOT BE PERMITTED.
6. ALL DIMENSIONS FOR THE PLAZA LAYOUT ARE SET PARALLEL OR PERPENDICULAR TO THE BUILDING WALLS.
7. ONLY THE REPAIR FOR THE CONSTRUCTION OF THE RETAINING WALLS IS TO BE INCLUDED AS PART OF THIS BID PACKAGE. THE CONCRETE WORK AND BRICK WORK WILL BE BID IN THE SECOND BID PACKAGE.

**LAYOUT KEY NOTES**

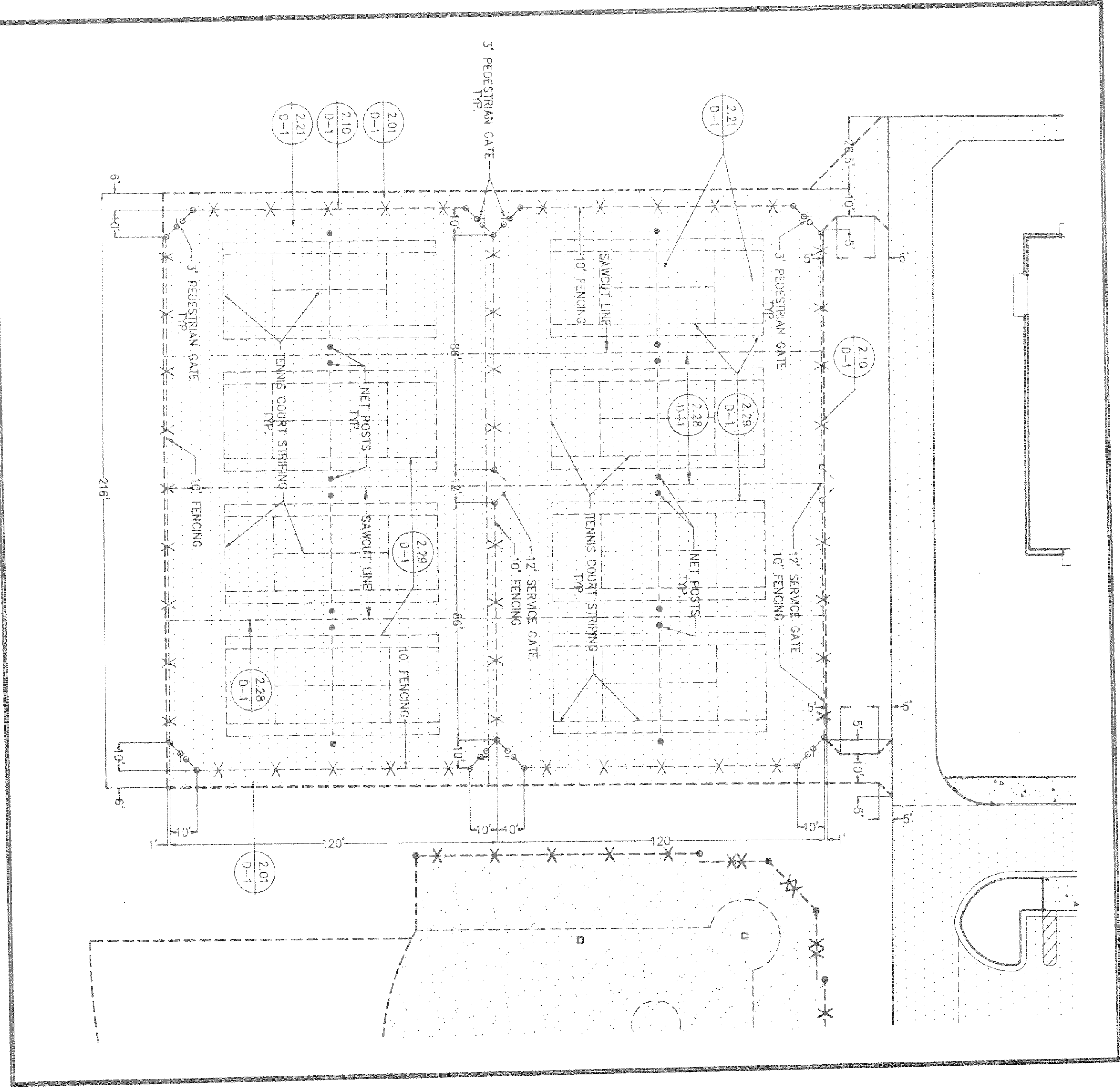
1. FLAG POLE
2. HAND-UP RAMP
3. DRIVE APRON
4. HAND RAILING
5. RETAINING WALL
6. THICKENED EDGE WALK
7. STAIR RAILING

**PLANT SCHEDULE**

ID#	BOTANICAL NAME	COMMON NAME	#	TYPE	SIZE
TREES					
AG	Acer glabra	Amur Maple	7	B&B	2" - 2 1/2"
AR	Acer glabrum Compact	Red Sunset Maple	3	B&B	2 1/2" - 3"
MD	Malus species	Donald Wyman Crab	5	B&B	2" - 2 1/2"
MP	Malus species	Donald Wyman Crab	2	B&B	2" - 2 1/2"
SHRUBS					
JC	Juniperus chinensis	Sea Green Juniper	30	B&B	18" - 24"
JH	Juniperus horizontalis	Andorra Juniper	47	B&B	18" - 24"
SB	Spiraea x bumalda	Anthony Waterer Spiraea	77	B&B	15" - 18"
TM	Toxus x media	Tauton Yew	4	B&B	18" - 24"
VO	Viburnum opulus	Compact European Cranberrysh Viburnum	6	B&B	24" - 36"
PERENNIALS					
H	Hosta spp	Variiegated Hosta	50	POT	1 Gallon
HS	Hemerocallis 'Stella D'ora'	Stella D'ora Daylily	25	POT	1 Gallon

**GENERAL NOTES**

1. CONTACT DIGGER'S HOTLINE 5 WORKING DAYS PRIOR TO THE START OF WORK.
2. PLANTINGS SHALL BE APPROVED BY OWNER/LA PRIOR TO INSTALLATION.
3. LANDSCAPE EDGING SHALL BE "EDGE-KING" OR EQUALLY APPROVED.
4. 4" DEPTH SHREDED HARDWOOD BARK MULCH IN ALL PLANTING BEDS.
5. 6" DEPTH TOPSOIL IN ALL GENERAL LANDSCAPE AREAS (BY SITE CONTRACTOR). BARK MULCH AT 4" DEPTH CONTAINED BY LANDSCAPE EDGING.
6. ALL TREES IN GRASS AREAS SHALL CONTAIN 5" DIAMETER CIRCLE OF SHREDED MULCH AT 4" DEPTH THROUGHOUT.
7. ALL TREES SHALL BE STAKED THROUGHOUT.
8. SUBSEQUENTLY BOUNDARIES SHALL BE FINE GRADED BY LANDSCAPE CONTRACTOR. ALL TREE AREAS SHALL BE FINE GRADED, SEDED, FERTILIZED, AND CRIMPED HAY MUCH APPLIED BY LANDSCAPE CONTRACTOR.
9. REMOVE BINDING MATERIAL ON ALL B&B STOCK ONCE POSITIONED IN PLANTING HOLE; CUT AWAY NATURAL FIBER BURLAP FROM ROOTBALL ENSURING PLANT ROOTS REMAIN NON-BIODERADABLE BURLAP FROM ROOTBALL ENSURING PLANT ROOTS REMAIN UNDISTURBED.
10. REMOVE BINDING MATERIAL ON ALL B&B STOCK ONCE POSITIONED IN PLANTING HOLE; CUT AWAY NATURAL FIBER BURLAP FROM ROOTBALL ENSURING PLANT ROOTS REMAIN UNDISTURBED.
11. ROOTS SHALL NOT ENERGE CONTAINER IN CONTAINER GROWN PLANTS.
12. DISEASED OR INSECT DAMAGED PLANT STOCK SHALL NOT BE PLANTED.
13. TREE PAINT SUBSTANCES SHALL NOT BE USED TO COVER TREE WOUNDS.
14. SEE DETAIL ARCHITECT TO INSPECT PLANT LAYOUT PRIOR TO PLANTING.
15. LANDSCAPE ARCHITECT TO INSPECT PLANT LAYOUT PRIOR TO PLANTING.
16. ALL LANDSCAPE BEDS SHALL BE CONTAINED BY LANDSCAPE EDGING AS SHOWN.



TENNIS COURT LAYOUT (ALTERNATE)  
SCALE 1" = 30'

**DETAIL SHEET**  
SCALE 1" = 30'

**RR** R.H. RETTLER & ASSOCIATES, INC.  
LANDSCAPE ARCHITECTURE ■ INTERIOR ARCHITECTURE ■ SITE CONSTRUCTION MANAGEMENT

**Bray Associates**  
Merrill High School District  
Merrill Area School District  
Merrill, Wisconsin

194 Lombard Avenue, Wausau, WI 54985  
Tel: 715/836-2222 Fax: 715/836-2222  
www.brayschools.com  
Drawn By: J.A.R.  
Date: 2/7/96  
Project No.: 2145.H

**S6H**

Copyright © 1996 Bray Associates Architects, Inc.