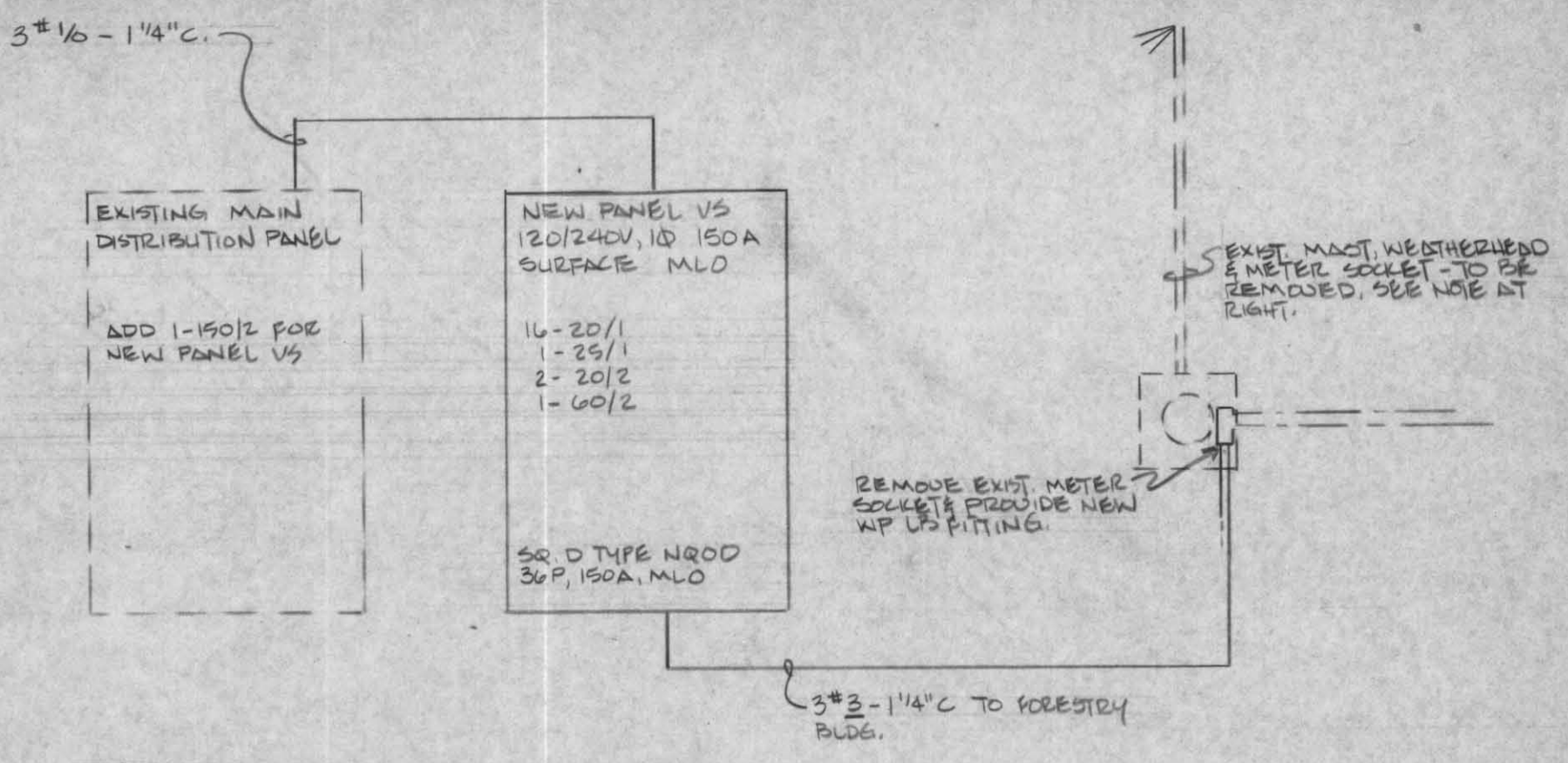


BASE OVERLAY DRG NO.

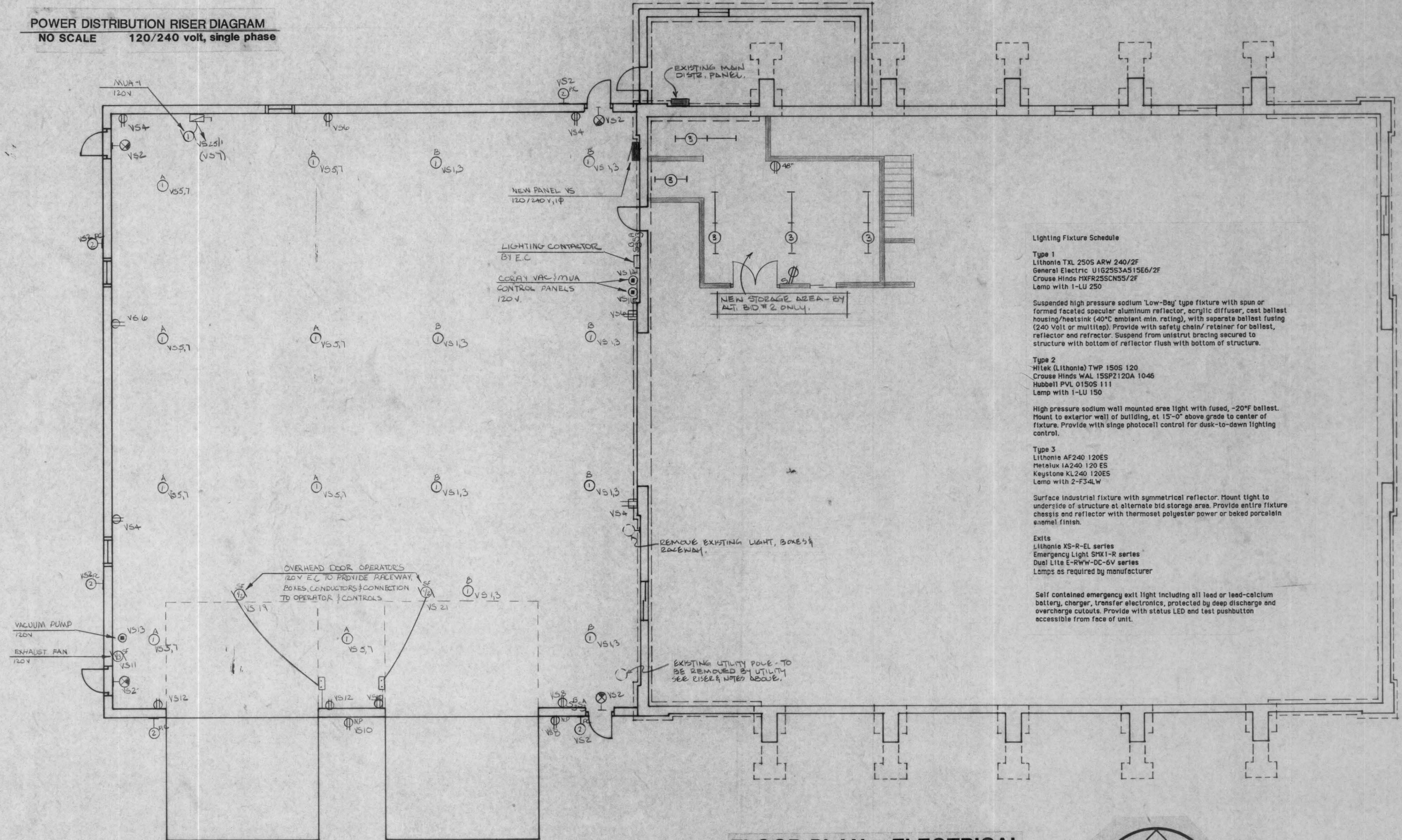


SERVICE ENTRANCE/DISTRIBUTION NOTES

Existing overhead secondary feed to the Forestry Building is to be removed by the Electrical Utility. The Electrical Contractor shall provide new electrical service from the existing main service panel, prior to removal of overhead service. Provide new 3-#3 XHHW underground to existing meter socket location; remove meter socket, mast and conductors to Forestry Building main device, provide LB entrance fitting at exterior of building, and install new conductors to Forestry Building Main. Coordinate outage of power with the owner. Disconnection of service shall be permitted only after prior notification and approval of the owner.

Coordinate installation of underground raceway for new feeder with the General Contractor, to clear new addition footings. Raceways from main panel to below grade at existing main panel shall be exposed Rigid Steel provided with seal offs at existing panel and rise above grade at forestry building. At Contractor's option, PVC raceway may be used if enclosed in minimum 8" block from not less than 18" above existing building floor to below grade. Exposed raceway at exterior of Forestry building shall be heavywall steel or concrete encased PVC.

POWER DISTRIBUTION RISER DIAGRAM
NO SCALE 120/240 volt, single phase



Lighting Fixture Schedule

- Type 1
Lithonia TFL 2505 ARW 240/2F
General Electric U1G25S3A515E6/2F
Crouse Hinds HXFR25SCN55/2F
Lamp with 1-LU 250
- Suspended high pressure sodium 'Low-Bay' type fixture with spun or formed faceted specular aluminum reflector, acrylic diffuser, cast ballast housing/heat sink (40°C ambient min. rating), with separate ballast fusing (240 Volt or multi-tap). Provide with safety chain/retainer for ballast, reflector and refractor. Suspend from unistrut bracing secured to structure with bottom of reflector flush with bottom of structure.
- Type 2
Hitek (Lithonia) TWP 1505 120
Crouse Hinds WAL 155P2120A 1046
Hubbell PVL 0150S 111
Lamp with 1-LU 150
- High pressure sodium wall mounted area light with fused, -20°F ballast. Mount to exterior wall of building, at 15'-0" above grade to center of fixture. Provide with single photocell control for dusk-to-dawn lighting control.
- Type 3
Lithonia AF240 120ES
Hetschler Ix240 120 ES
Keystone KL240 120ES
Lamp with 2-F34LW
- Surface industrial fixture with symmetrical reflector. Mount tight to underside of structure at alternate bid storage area. Provide entire fixture chassis and reflector with thermoset polyester powder or baked porcelain enamel finish.
- Exits
Lithonia XS-R-EL series
Emergency Light SMX1-R series
Dual Lite E-RWW-DC-6V series
Lamps as required by manufacturer
- Self contained emergency exit light including all lead or lead-calcium battery, charger, transfer electronics, protected by deep discharge and overcharge cutouts. Provide with status LED and test pushbutton accessible from face of unit.

SYMBOL SCHEDULE

- Lighting Fixture Outlet
- Surface or Suspended Lighting Fixture
- Wall or Bracket Mounted Fixture
- ⊗ Exit Fixture - Shading indicates Illuminated Face(s)
- S Single Pole Toggle Switch
- S₃ Three-Way Toggle Switch
- ⊕ Duplex 120 VAC Receptacle
- ⊖ Disconnect Switch
- ⊕ Motor Connection. 'F' Denotes Fractional Horsepower
- C Conduit
- EC Electrical Contractor
- EF Exhaust Fan
- MT Empty

FLOOR PLAN - ELECTRICAL
1/8" = 1'-0"



NOTE:
All conduit installed within the vehicle repair and storage areas must comply with NEC Chapter 5, Article 511 in particular. No conduit shall pass through the plane at 18" above the floor unless it is threaded rigid steel raceway provided with sealoffs and installed as required by NEC Chapter 5.

DRAWN BY
 DATE
 2/28/88

WHA
 WALT HESTEKIN ASSOCIATES, LTD.
 Consulting Engineers
 P.O. Box 447, Eau Claire, WI 54702-0447
 TELEPHONE: (715) 835-1209
 WHA NO. 88104

NO.	BY	DATE	REVISIONS	ITEM	DESIGN	CHECKED



LINCOLN COUNTY
 VEHICLE STORAGE ADDITION
 TOMAHAWK, WISCONSIN

ELECTRICAL PLAN

FILE NO.
89003
DATE
AUG 1988
E1