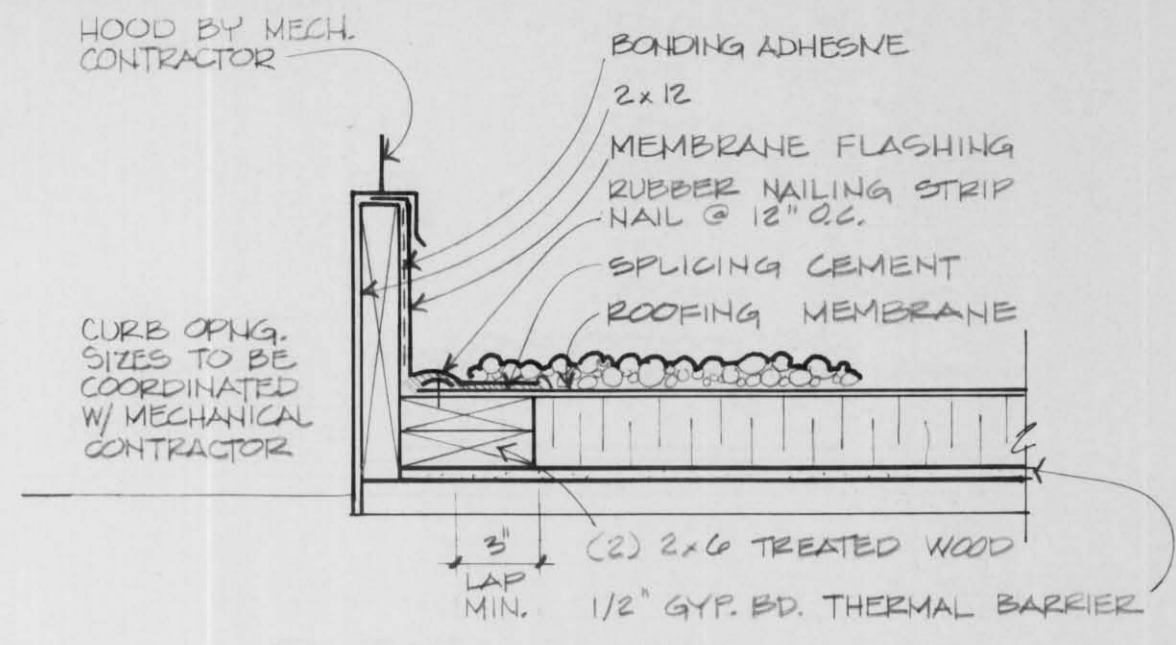
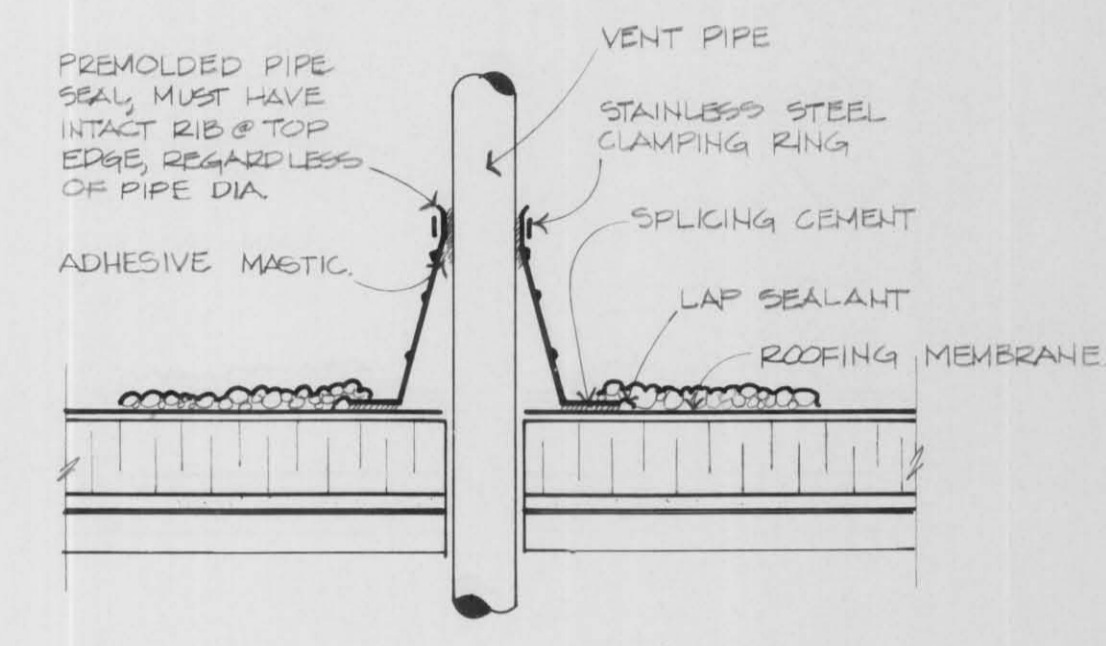


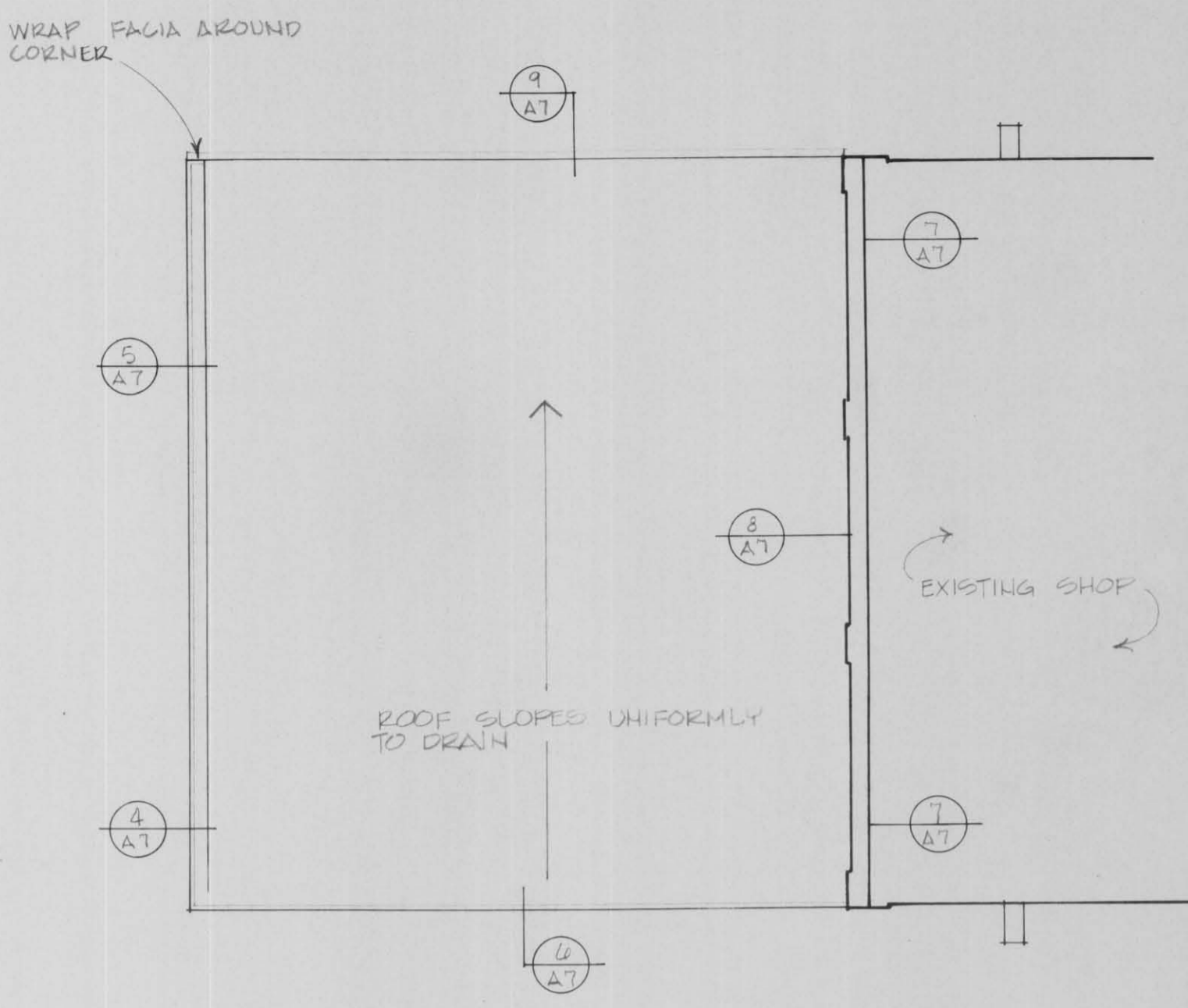
BASE	OVERLAY	DRG NO.



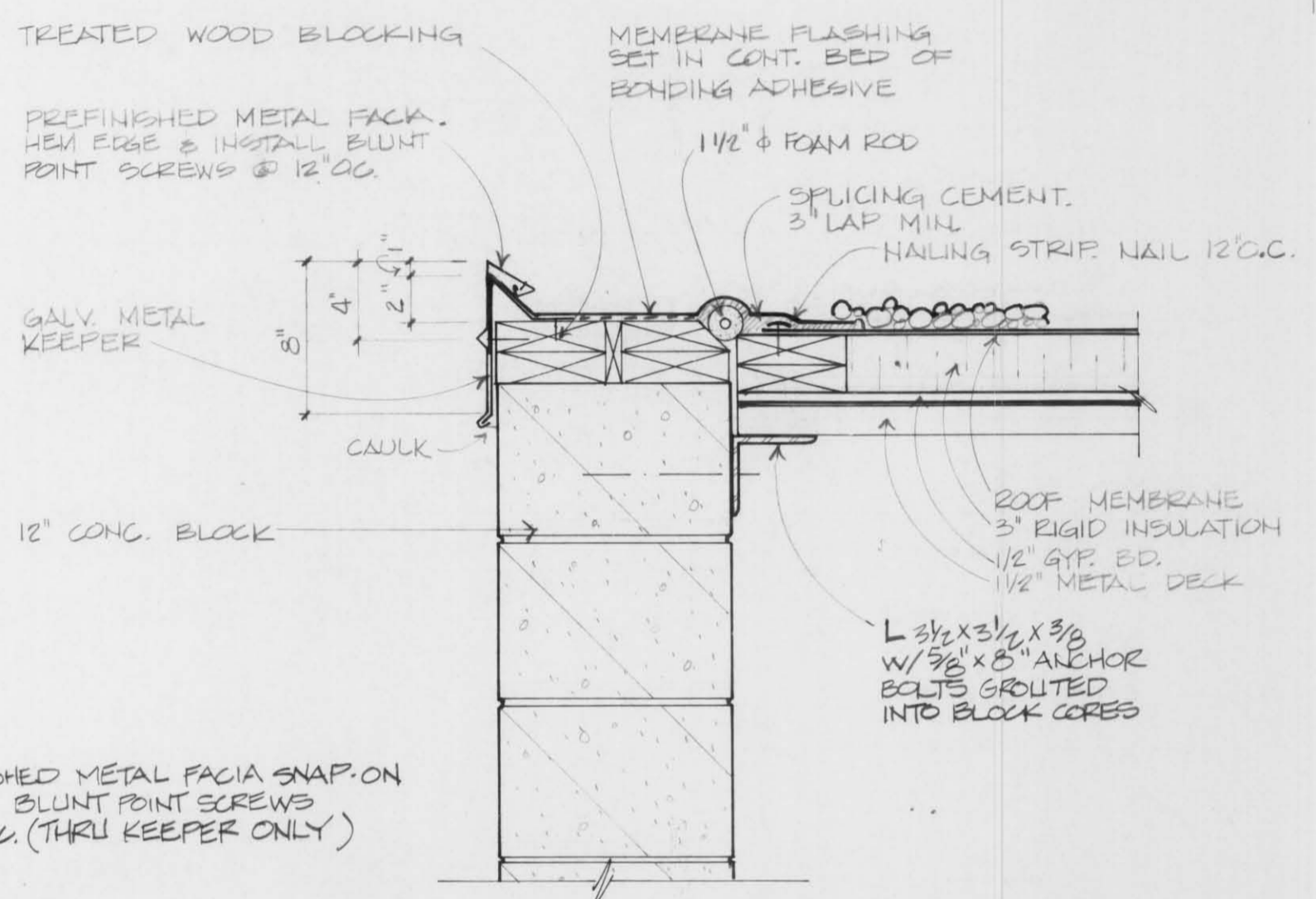
2 TYPICAL CURB DETAIL
1/2" = 1'-0"



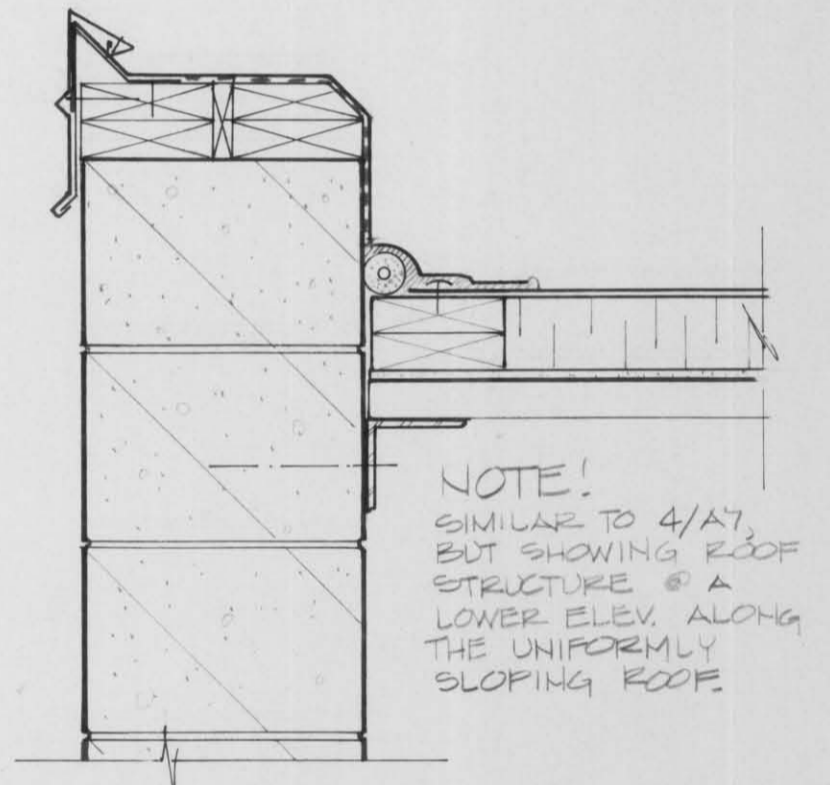
3 TYPICAL VENT PIPE DETAIL
1/2" = 1'-0"



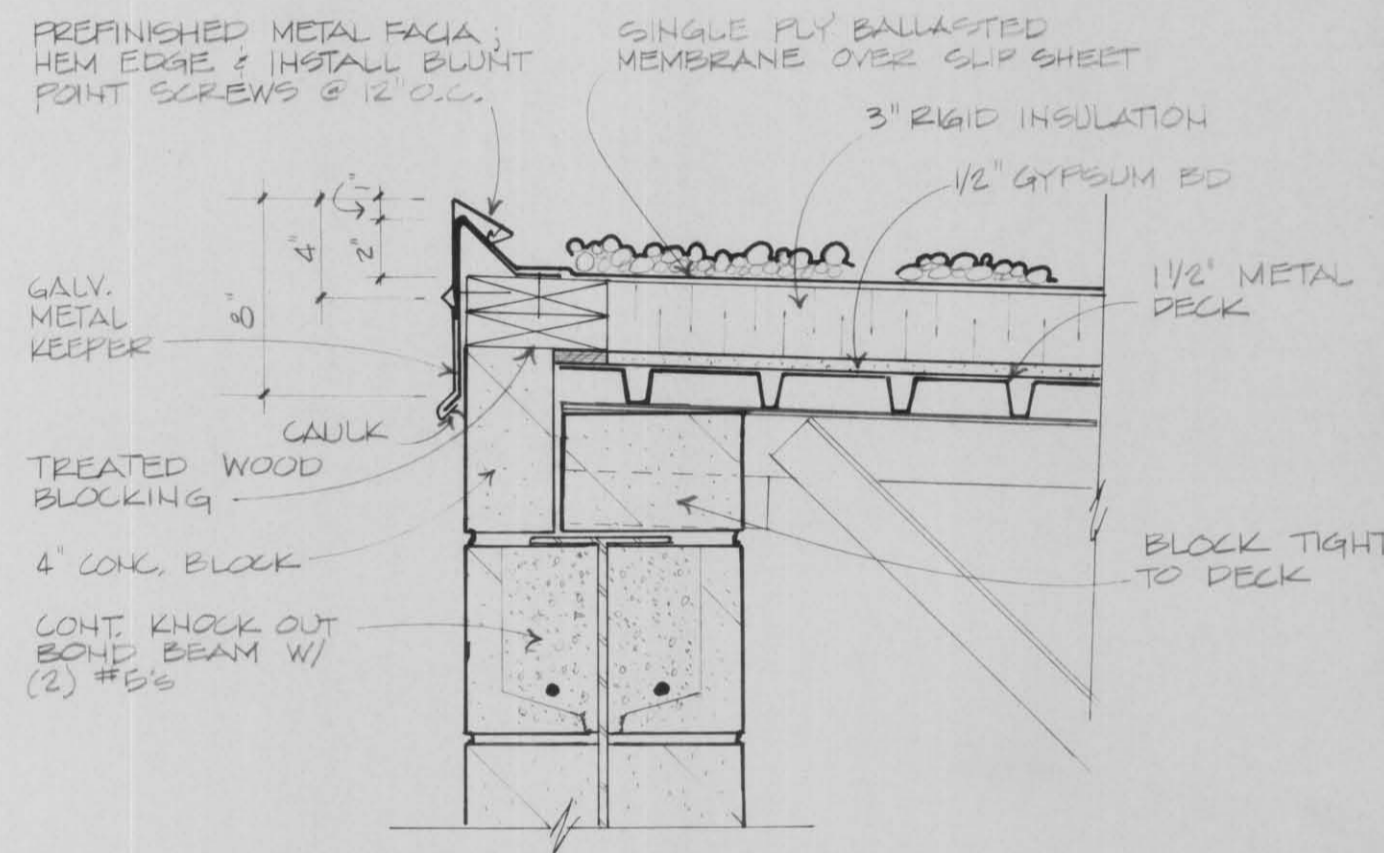
1 ROOF PLAN
1/16" = 1'-0"



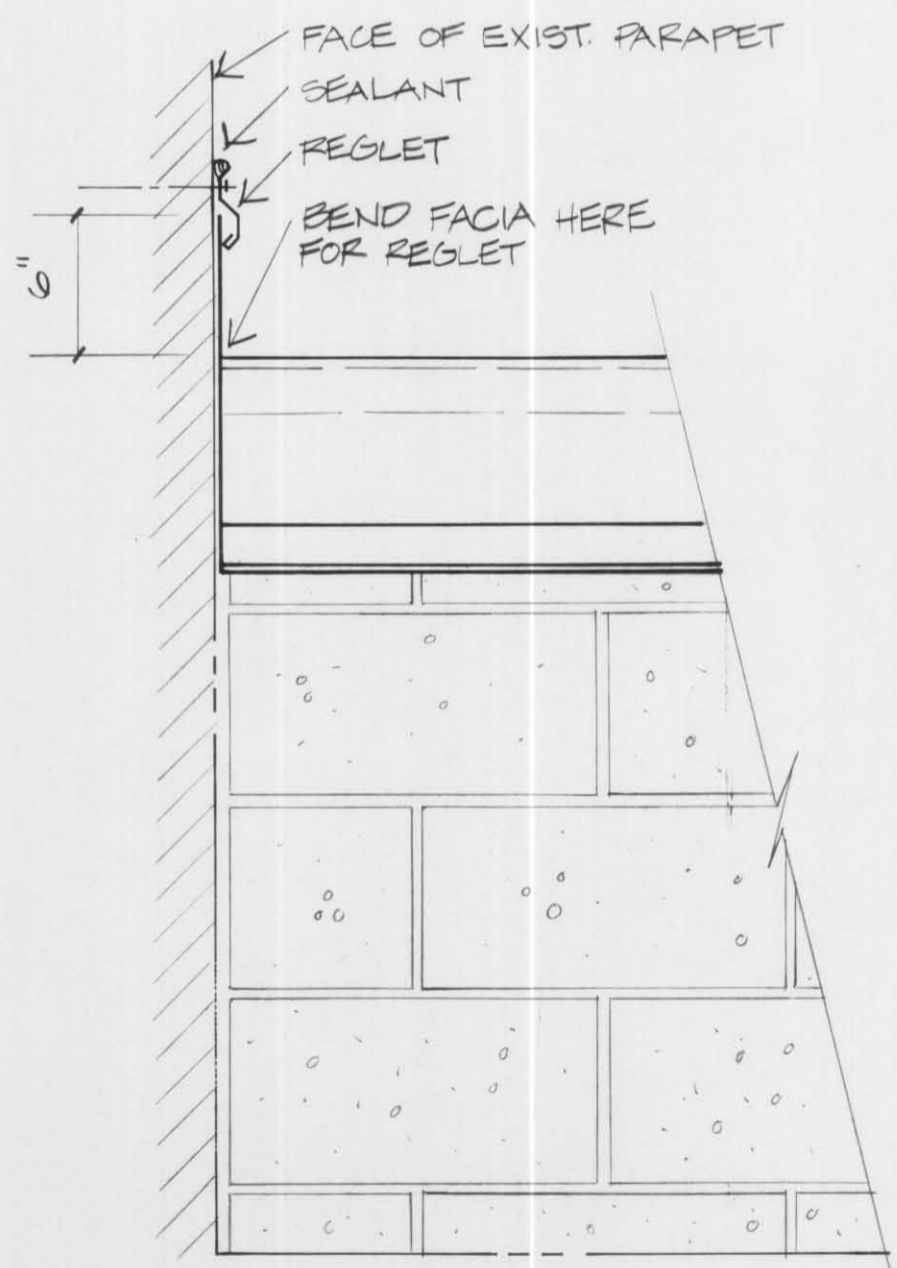
4 ROOF EDGE DETAIL
1/2" = 1'-0"



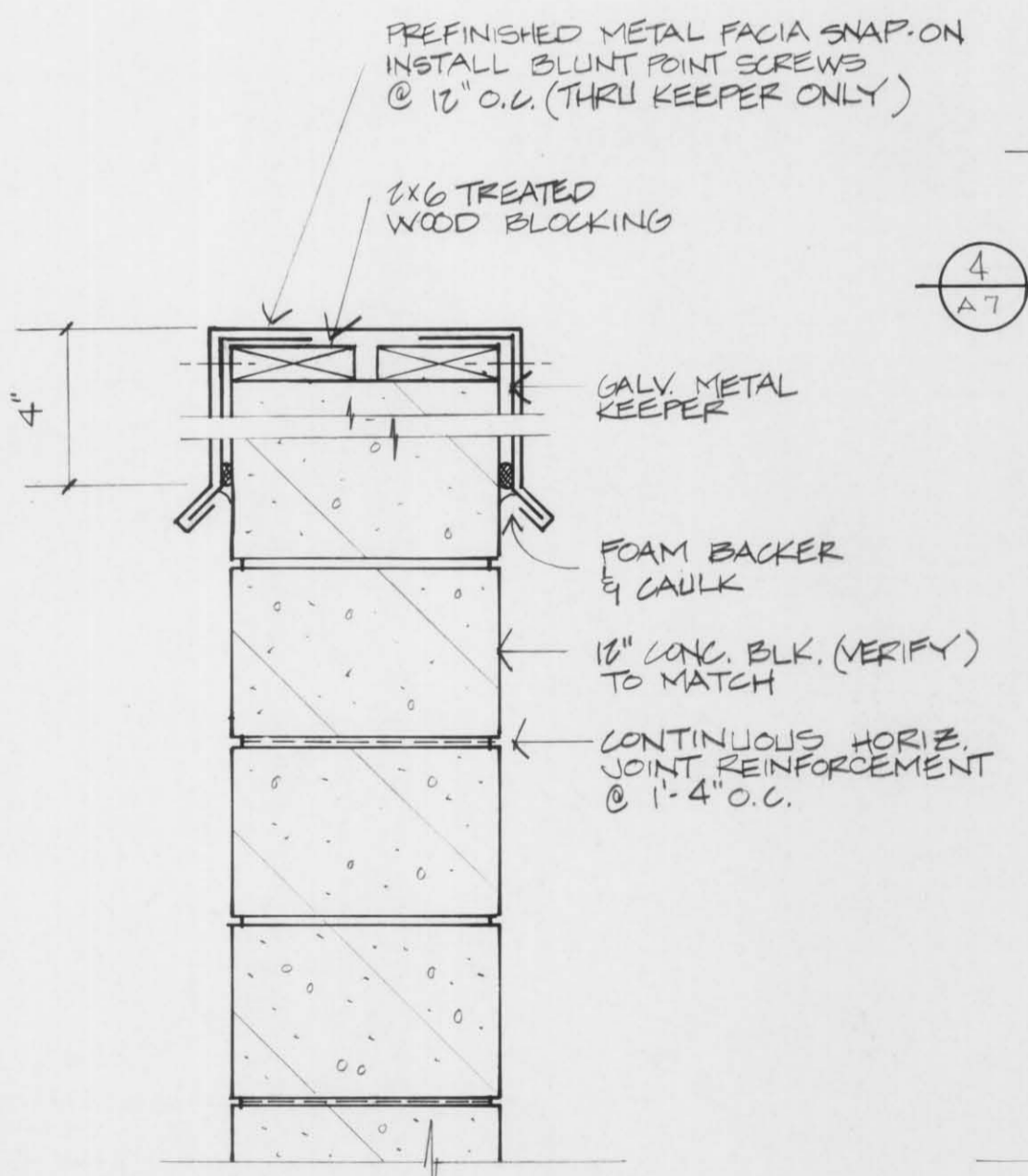
5 ROOF EDGE DETAIL
1/2" = 1'-0"



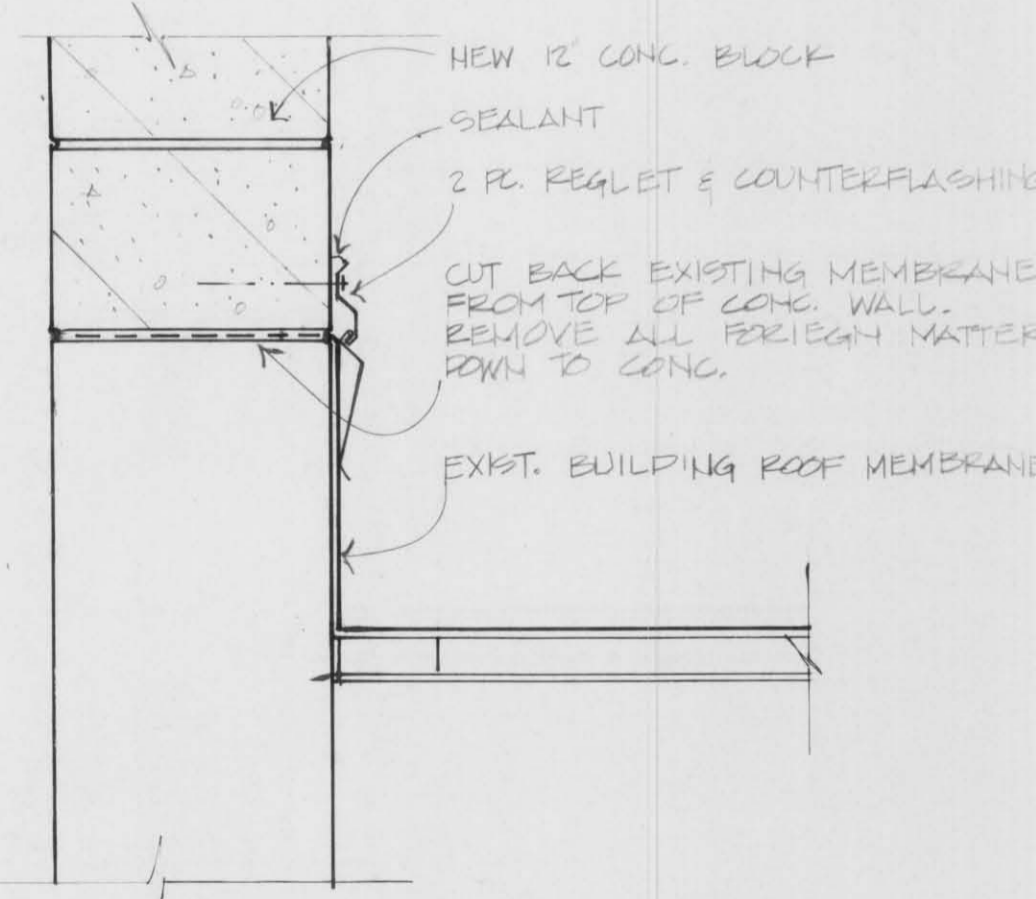
6 ROOF EDGE DETAIL
1/2" = 1'-0"



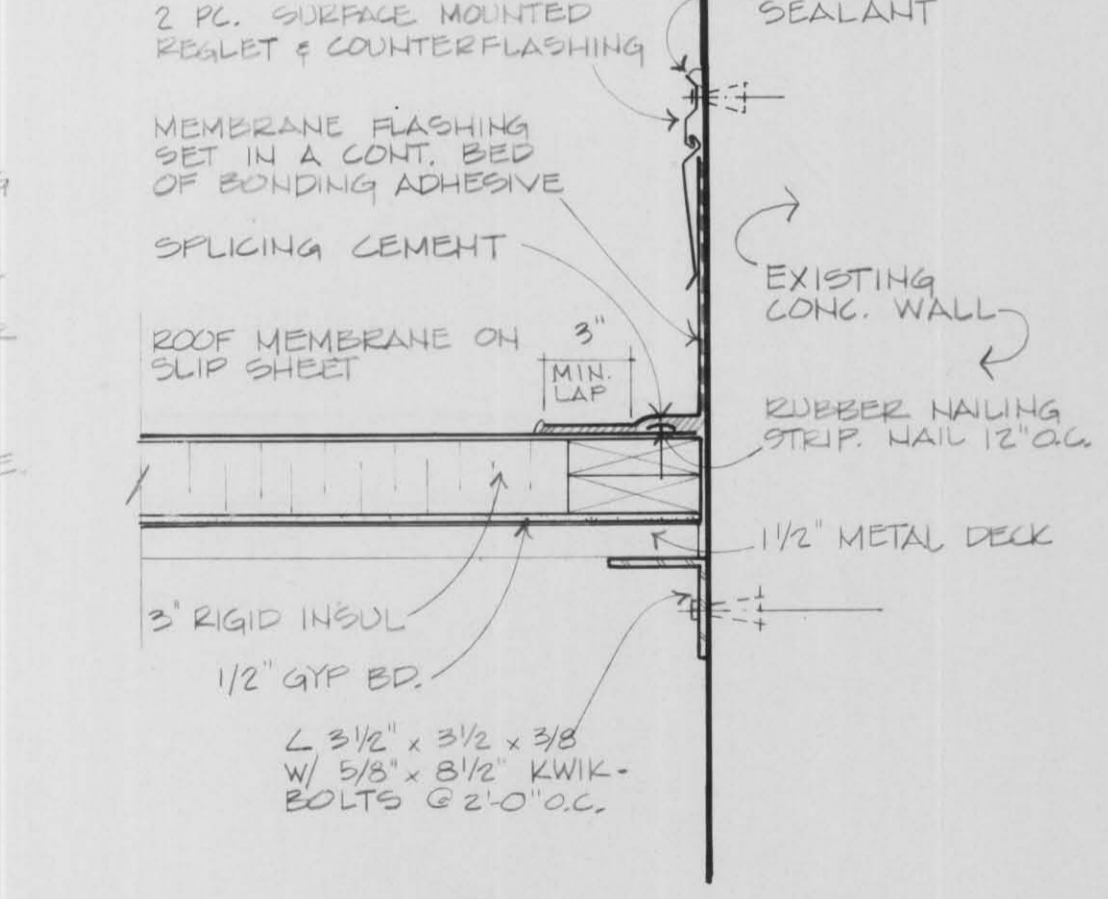
SIDE VIEW



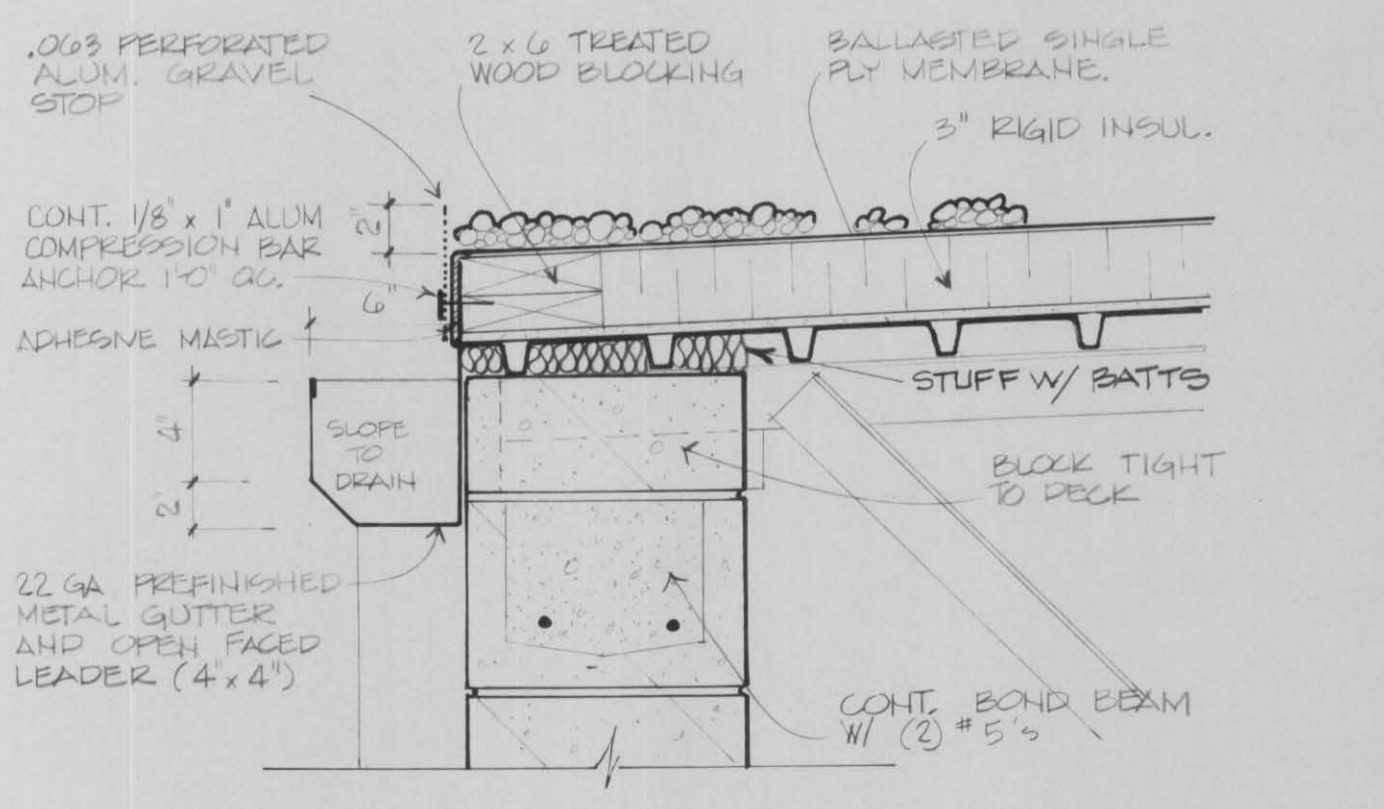
8 COPING DETAIL
1/2" = 1'-0"



7 ROOF EDGE DETAIL
1/2" = 1'-0"



3 ROOF EDGE DETAIL
1/2" = 1'-0"



9 ROOF EDGE DETAIL
1/2" = 1'-0"

NO.	BY	DATE	REVISIONS	ITEM	DESIGN	CHECKED



LINCOLN COUNTY
VEHICLE STORAGE ADDITION
TOMAHAWK, WISCONSIN

ROOF PLAN AND DETAILS
FILE NO. 89003
DATE AUG. 88
A7