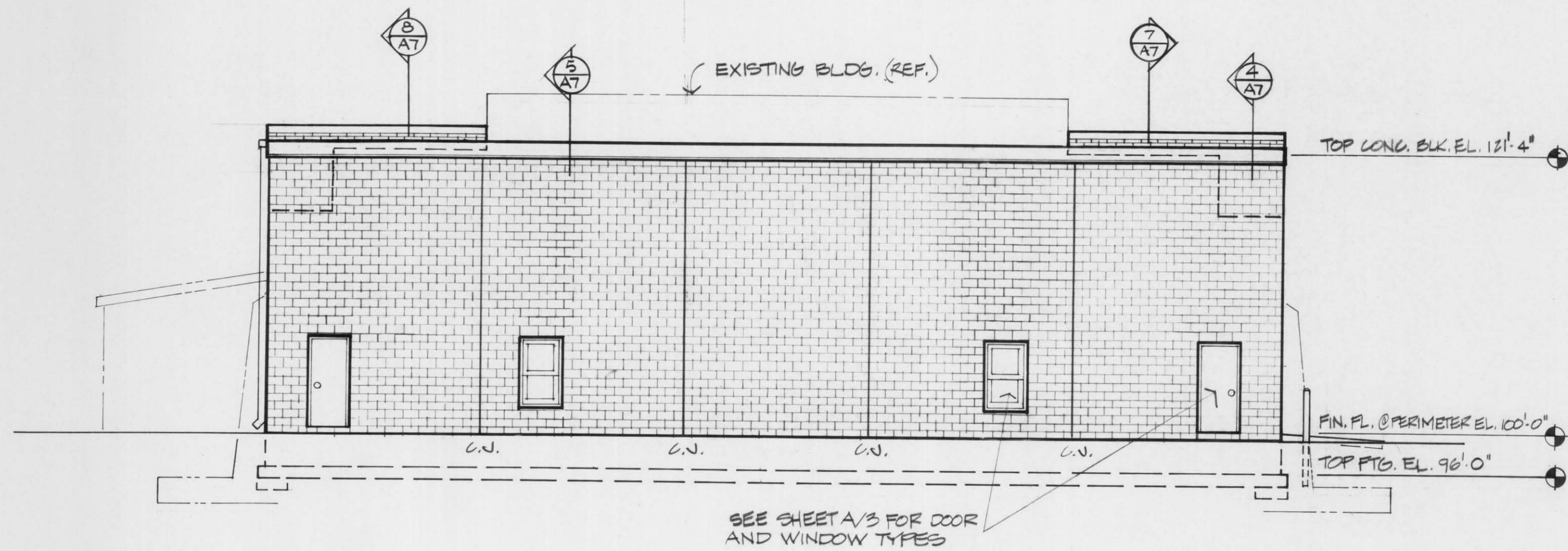
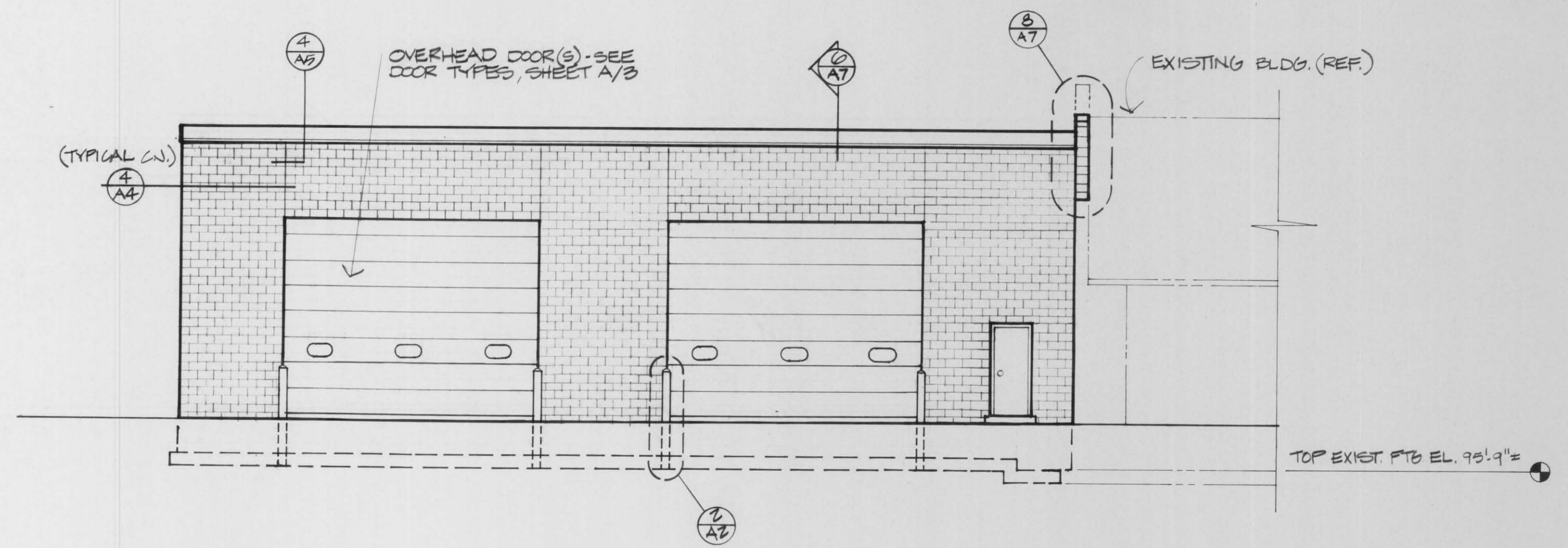


BASE OVERLAY DRG. NO.	

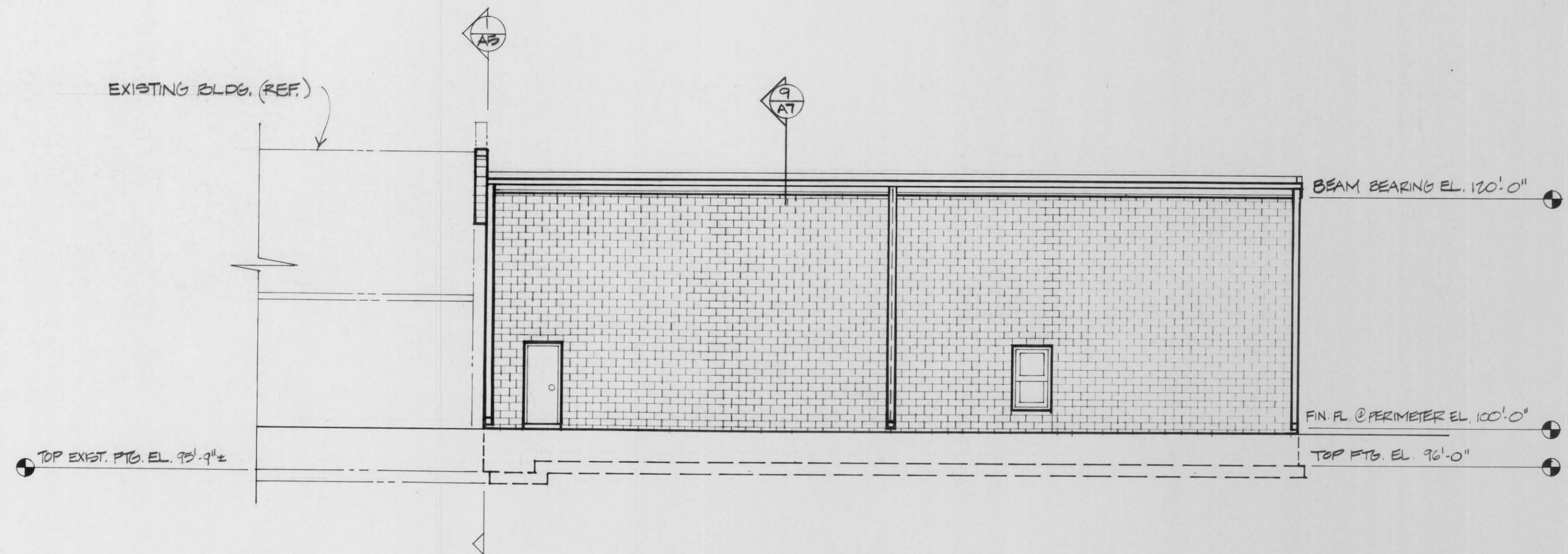


WEST ELEVATION  
1/8" = 1'-0"



SOUTH ELEVATION  
1/8" = 1'-0"

NOTE: IN EOND BEAM REBAR SHALL BE LAPPED AND CONTINUE THRU JOINT - BREAK BOND @ ONE END OF RE-BAR BY WRAPPING W/ DUCT TAPE.



NORTH ELEVATION  
1/8" = 1'-0"

NO.	BY	DATE	REVISIONS	ITEM	DESIGN	CHECKED



LINCOLN COUNTY  
VEHICLE STORAGE ADDITION  
TOMAHAWK, WISCONSIN

BUILDING ELEVATIONS

FILE NO.  
89003  
DATE  
AUG. 88

A4