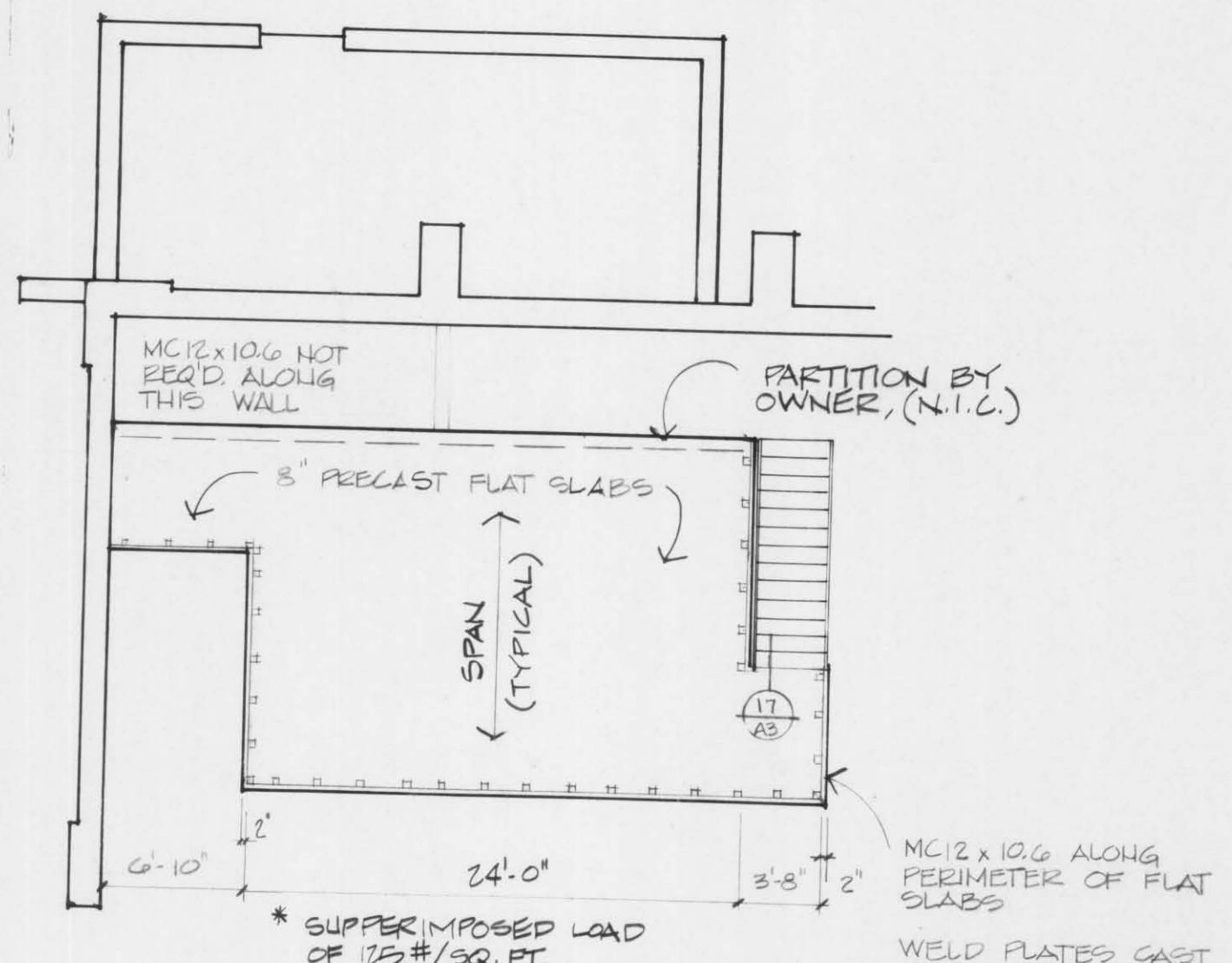
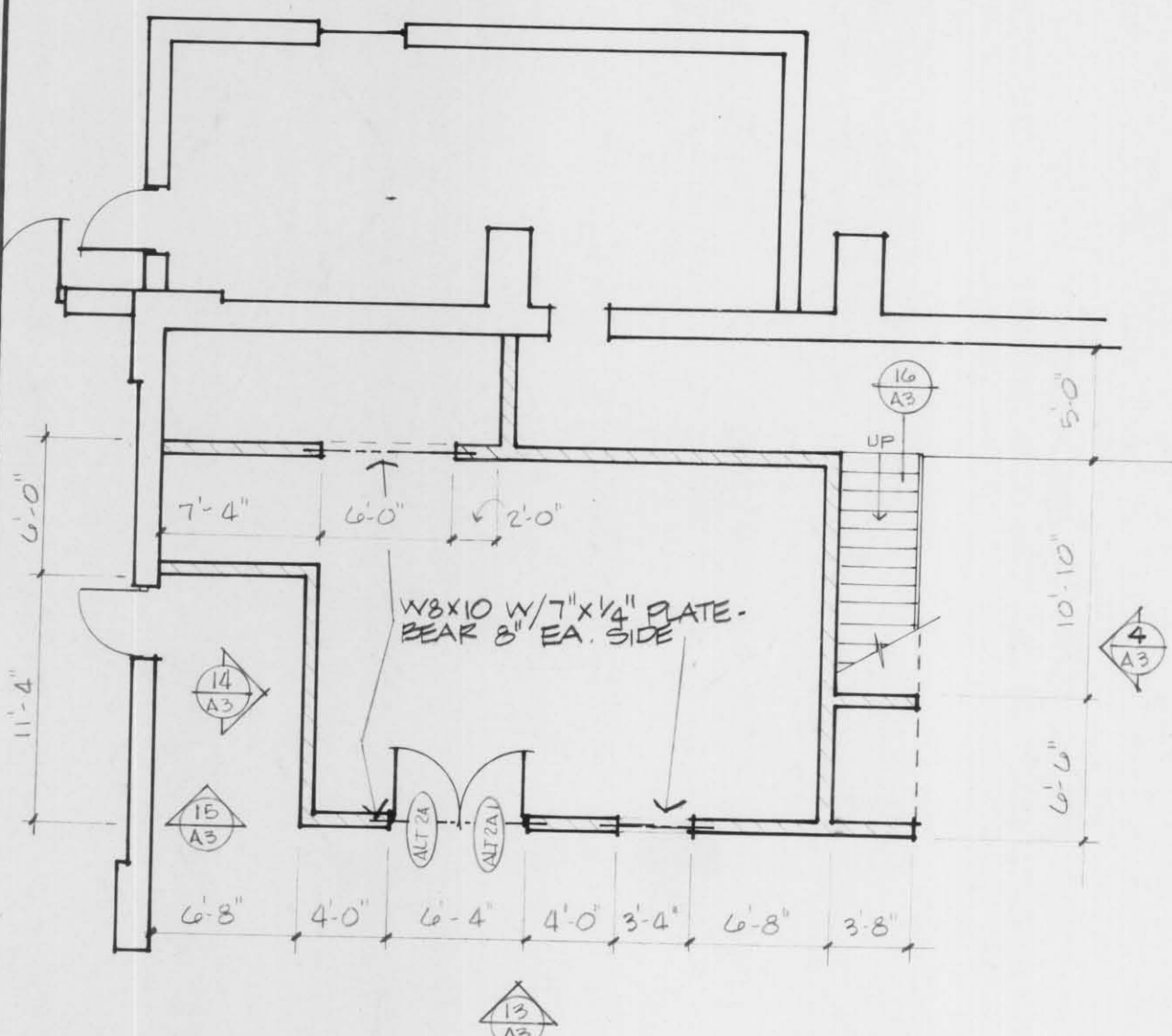


ROOM FINISH SCHEDULE

NO.	ROOM NAME	CLG. HT.	WALLS								FLOOR	BASE	NOTES
			NORTH		SOUTH		EAST		WEST				
			MAT'L.	FIN.	MAT'L.	FIN.	MAT'L.	FIN.	MAT'L.	FIN.			
100	VEHICLE SHOP	EXIST.	EXIST.	EXIST.	EXIST.	EXIST.	EXIST.	EXIST.	EXIST.	EXIST.	EXIST.	EXISTING; TO REMAIN AS IS	
101	VEHICLE SHOP	STRUC. FRNT.	INTERIOR & EXTERIOR CONC. BLK. TO RECEIVE (2) COAT CHEMSTOR. EXIST. EAST WALL TO REMAIN AS IS	EXIST.	EXIST.	EXIST.	EXIST.	EXIST.	EXIST.	EXIST.	EXIST.	EXISTING; TO REMAIN AS IS	
ALT. 2A	STORAGE	CONC. PAINT	CONC. PAINT	PAINT	BLOCK	PAINT	BLOCK	PAINT	BLOCK	PAINT	EXIST.	PAINT BOTH "INT." AND "EXT." BLOCK IN ALT. 2	

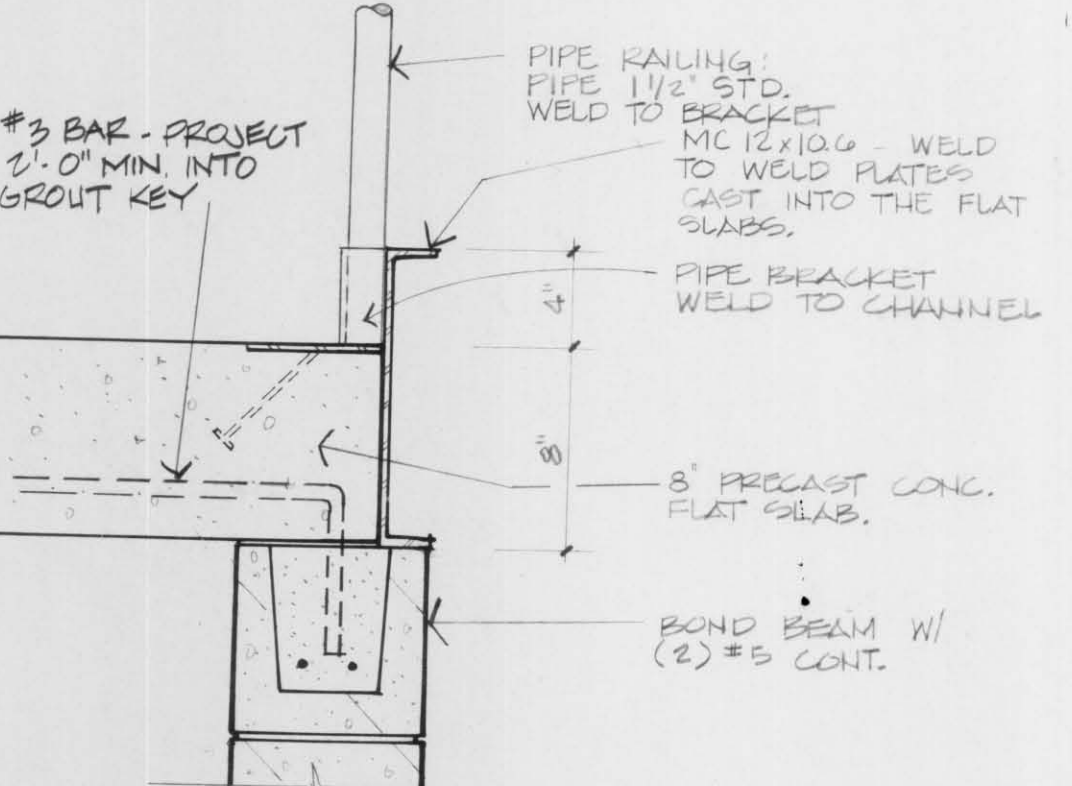
DOOR AND HARDWARE SCHEDULE

DOOR NUMBER	DOOR TYPE	DOOR WIDTH	DOOR HEIGHT	FRAME SIZE	FRAME MATERIAL	GLASS SIZE	ELEV.	FRAME	BUTTS	LOCKSET	CLOSURE	STOP	PUSH	PULL	KICK #	NOTES
								DETAILS	NUMBER	PK	STANLEY EXT. US 22 D INT. US 20 D 4 1/2" x 4 1/2"	CORBIN 803 GLOBAL US 20 D	LCN ALUM.	IVES US 32 D.		
101	A	3'-0"	7'-0"	5 3/4"	H.M.		10	10	FBB 199	1/2	455	4110				(2)
101-1	A	3'-0"	7'-0"	5 3/4"	H.M.		10	10	FBB 199	1/2	455	4110				(2)
101-2	A	3'-0"	7'-0"	5 3/4"	H.M.		10	10	FBB 199	1/2	455	4110				(2)
101-3	A	3'-0"	7'-0"	5 3/4"	H.M.		10	10	FBB 199	1/2	455	4110				(2)
ALT. 2A	B	3'-0"	7'-0"	5 3/4"	H.M.		7	8	FBB 179	1/2						
ALT. 2A-1	B	3'-0"	7'-0"	5 3/4"	H.M.		7	8	FBB 179	1/2						

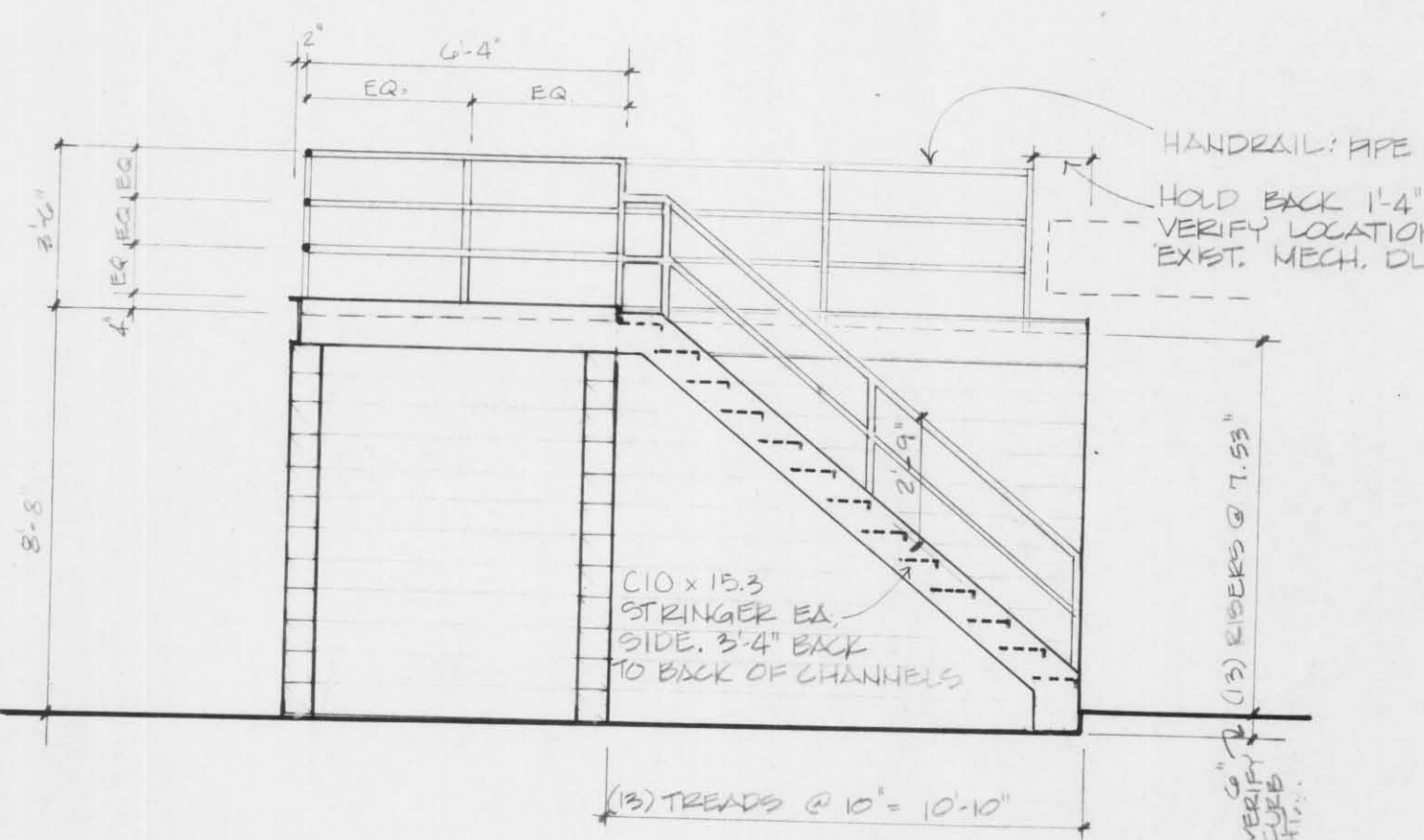


1 STORAGE ROOM ALT 2A 1/8" = 1'-0"

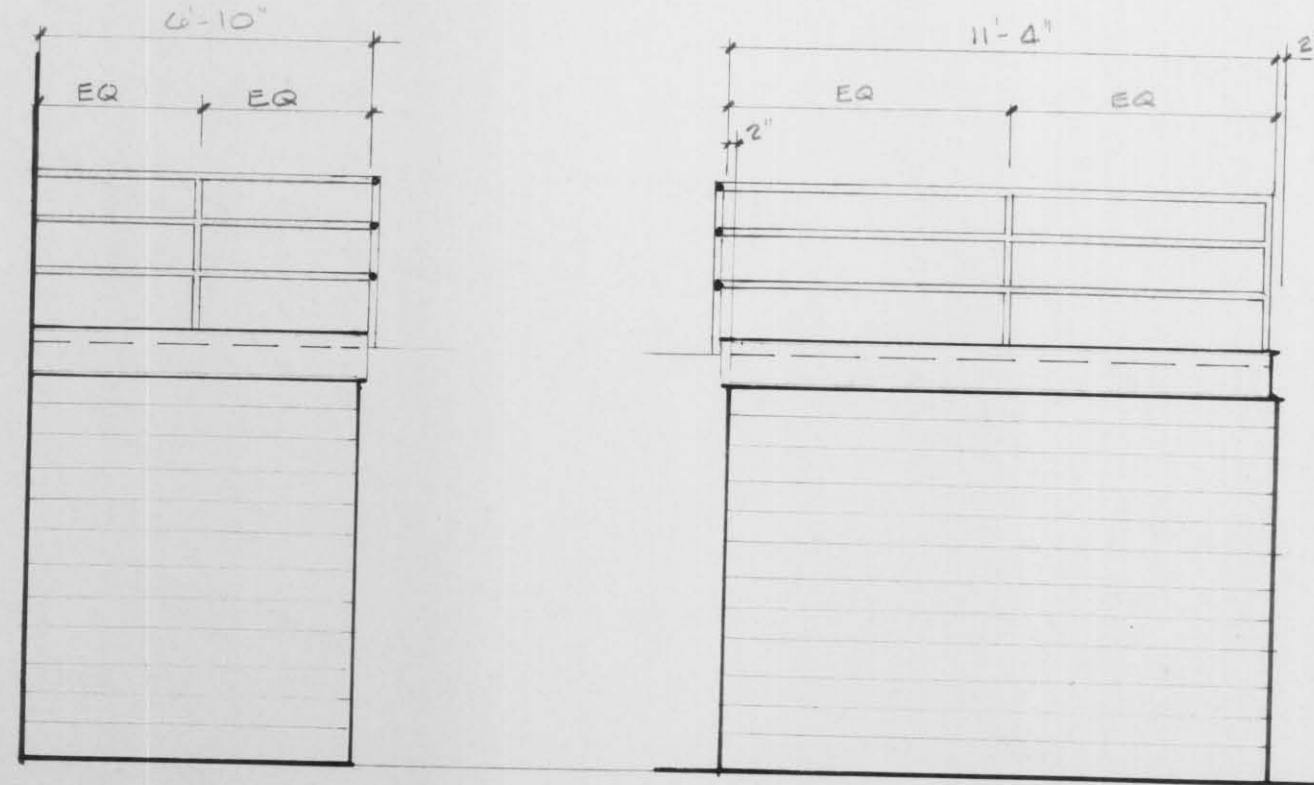
2 MEZZANINE FLOOR FRAMING 1/8" = 1'-0"



3 FLAT SLAB EDGE DETAIL 1/2" = 1'-0"



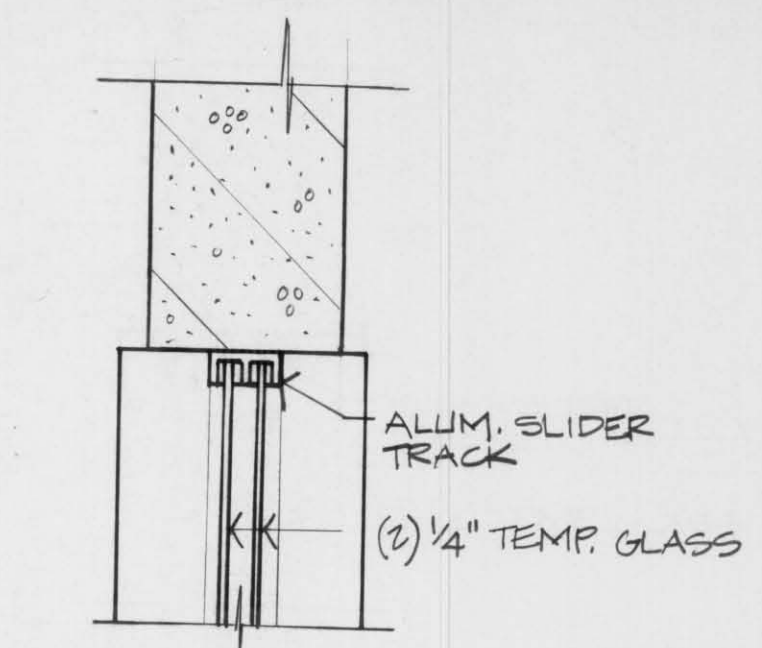
4 STAIR DETAIL 1" = 1'-0"



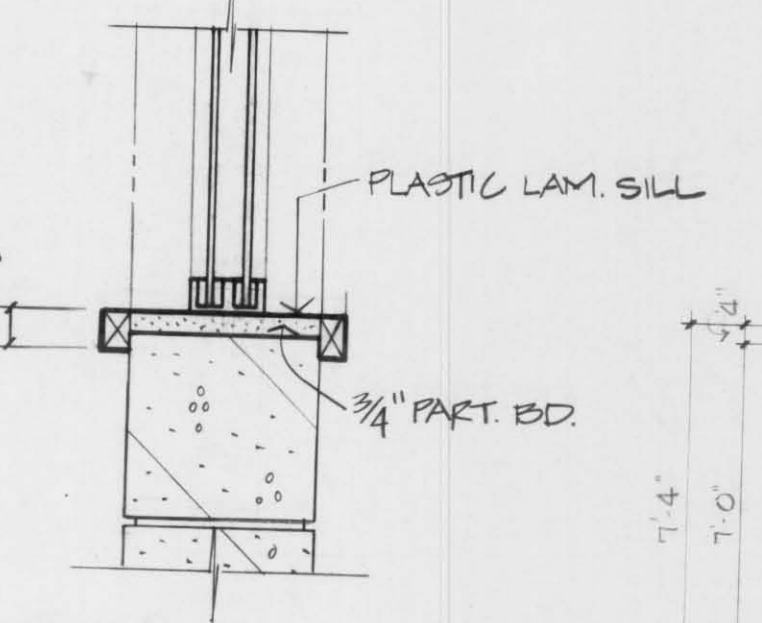
15 ELEV. 1/4" = 1'-0"

14 ELEVATION 1/4" = 1'-0"

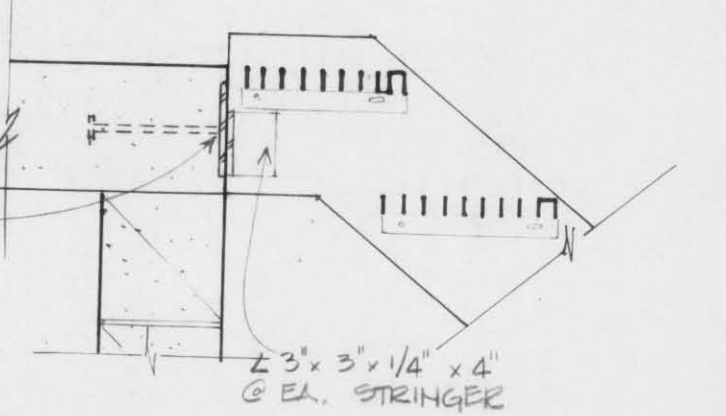
13 ELEVATION 1/4" = 1'-0"



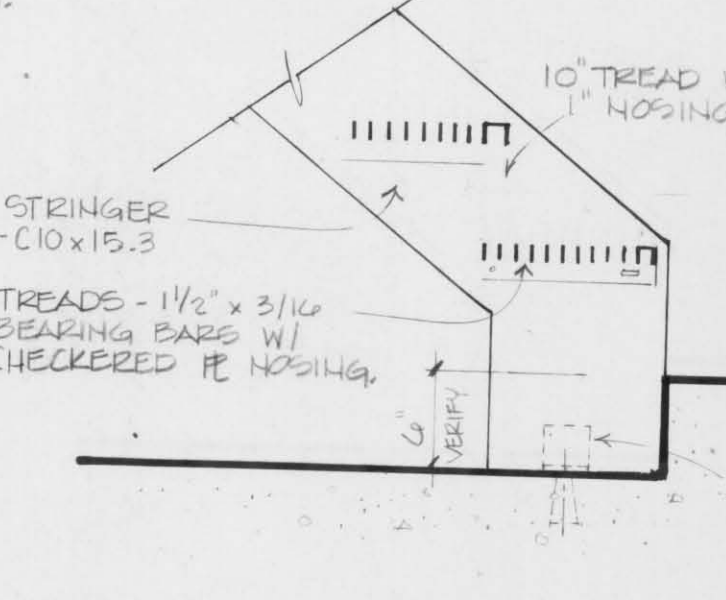
19 JAMB 1/2" = 1'-0"



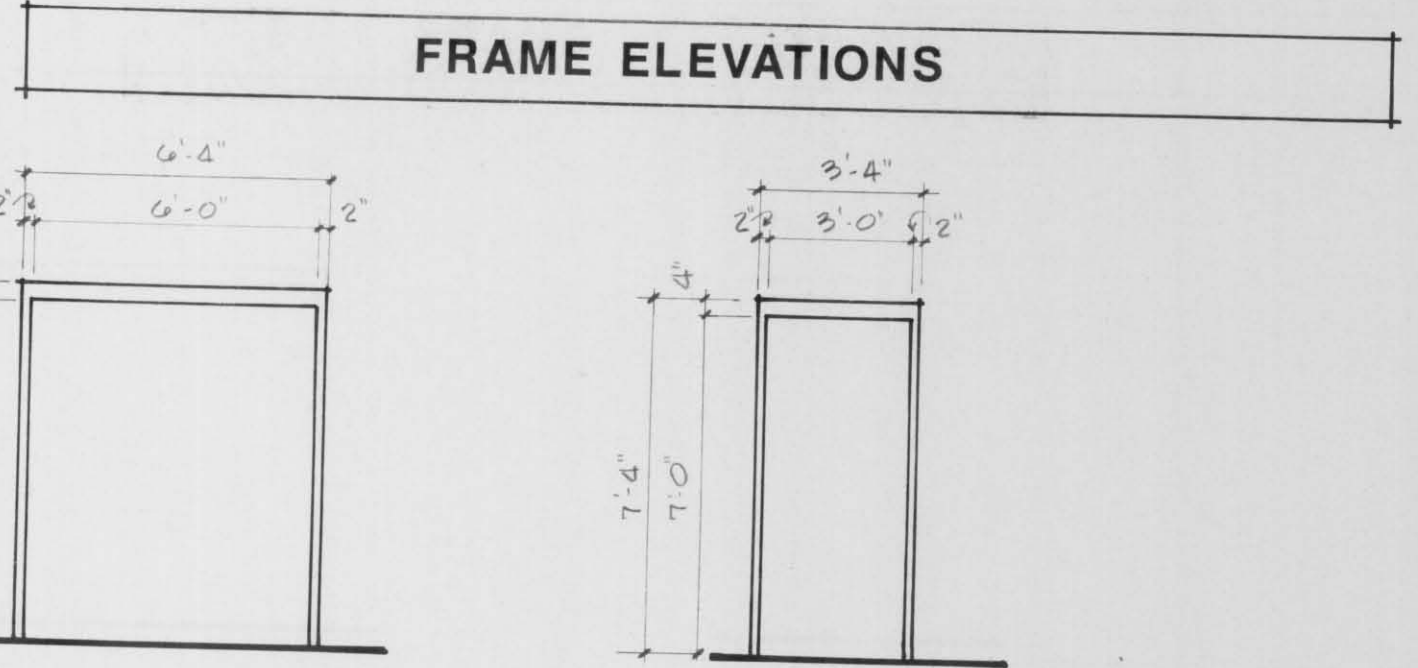
18 SILL 1/2" = 1'-0"



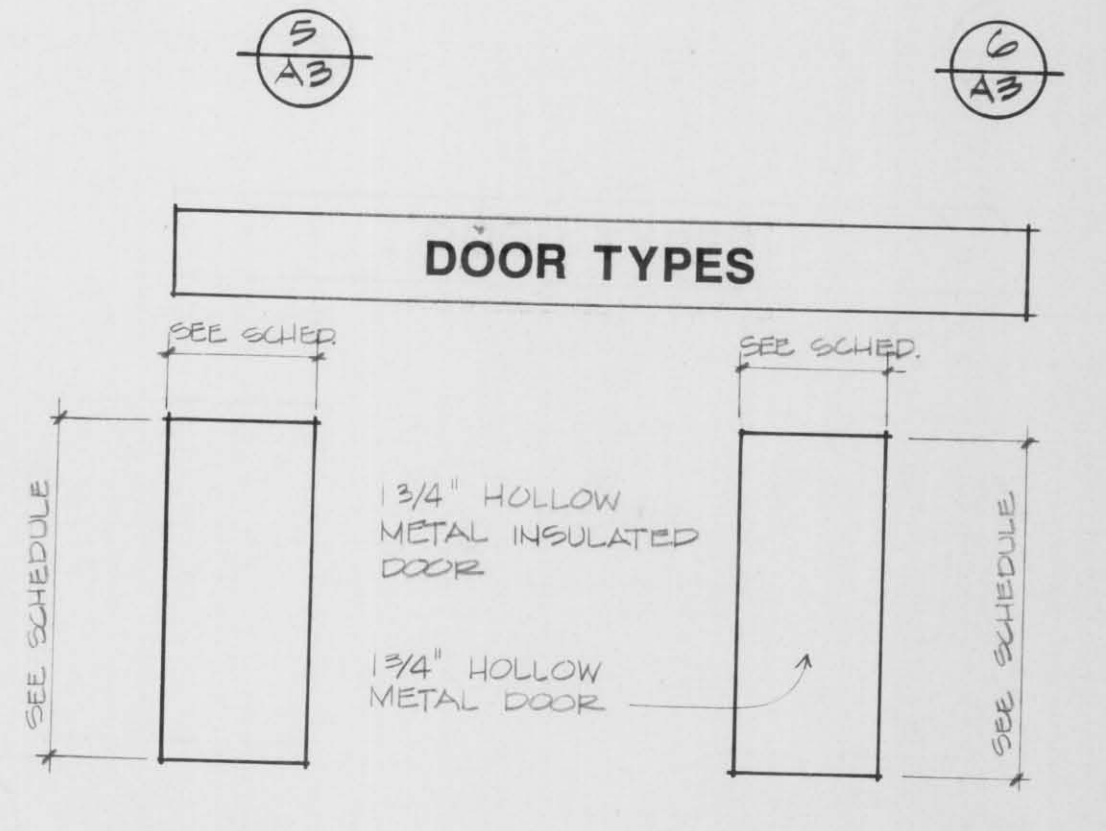
17 STAIR DETAIL 1" = 1'-0"



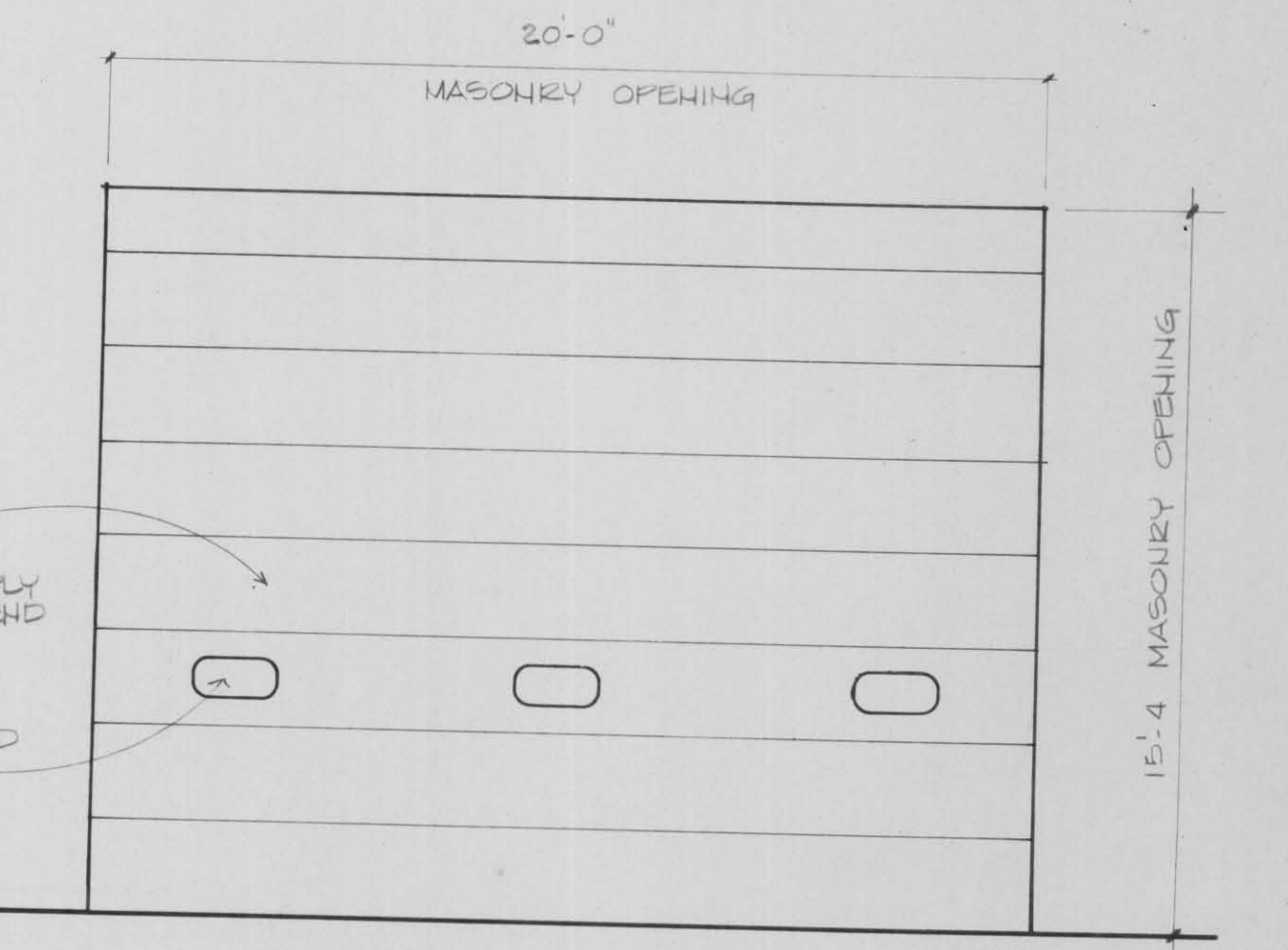
16 STAIR DETAIL 1" = 1'-0"



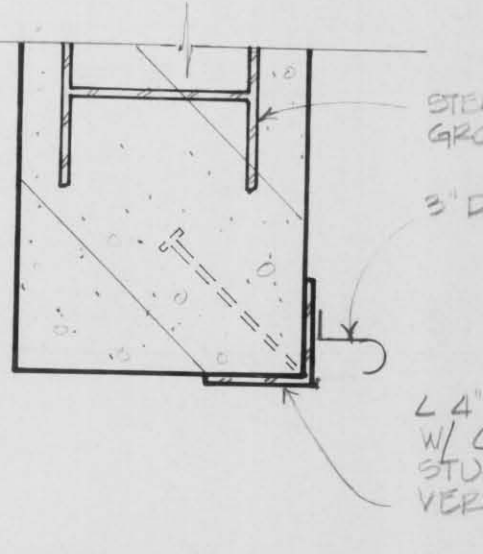
FRAME ELEVATIONS



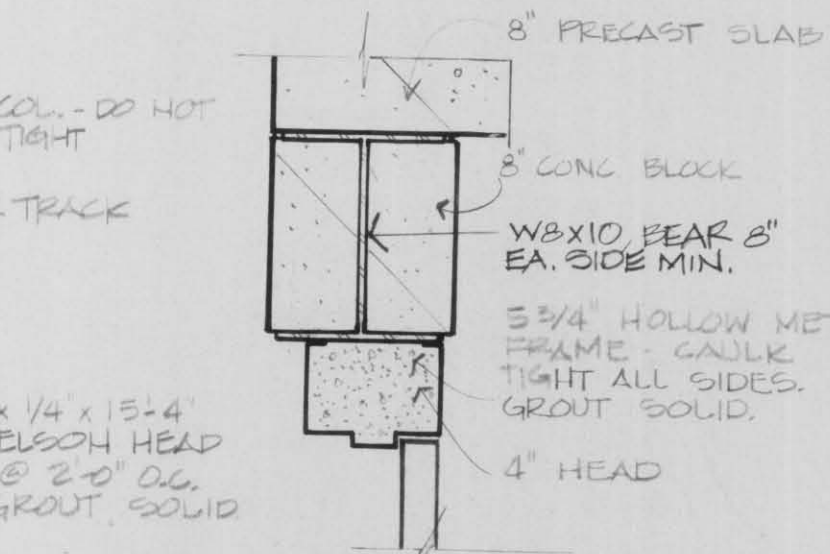
DOOR TYPES



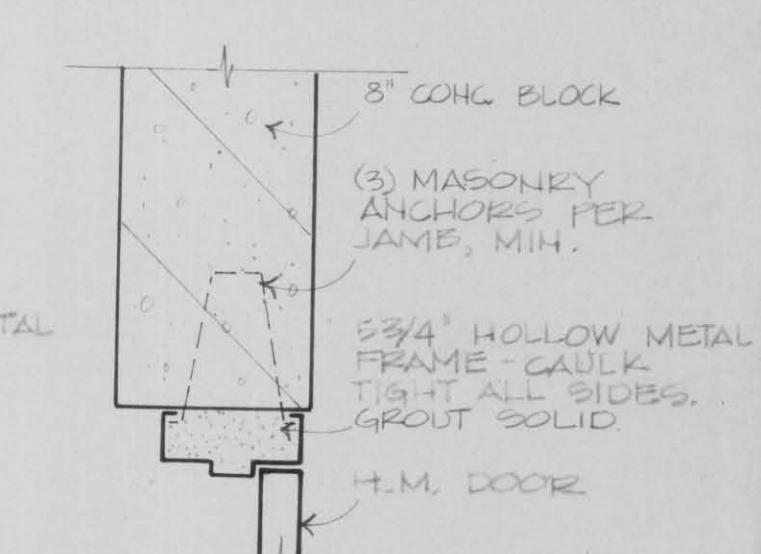
OVERHEAD DOOR



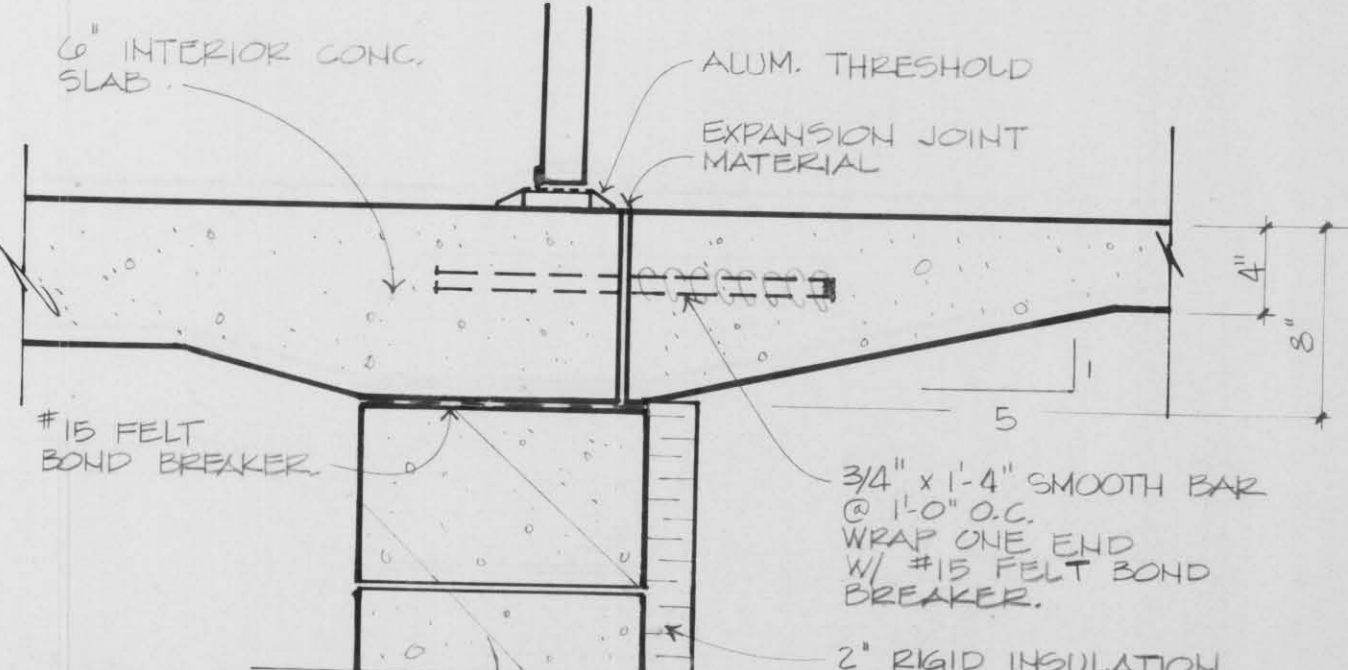
9 JAMB DETAIL 1/2" = 1'-0"



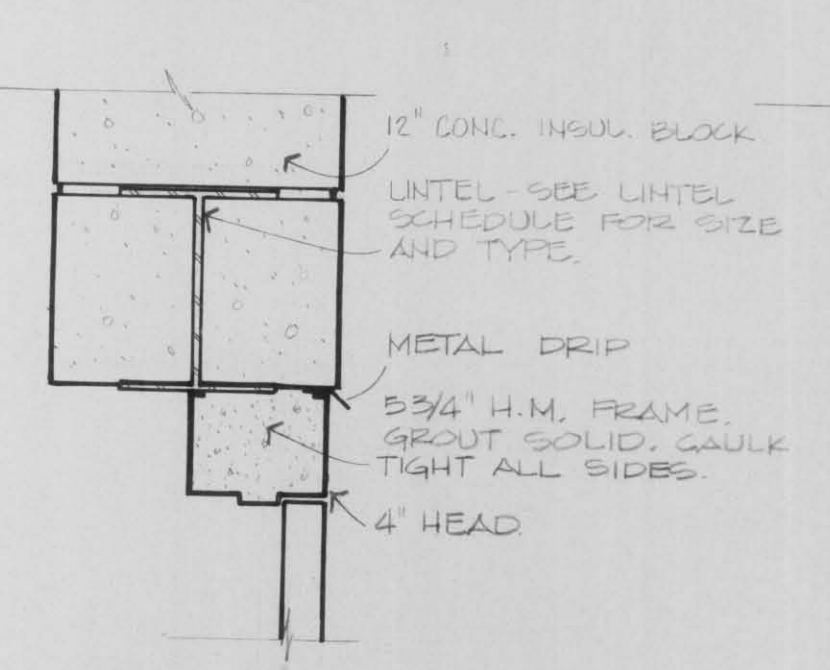
5 HEAD DETAIL 1/2" = 1'-0" LIMITED TO ALTERNATE 2A



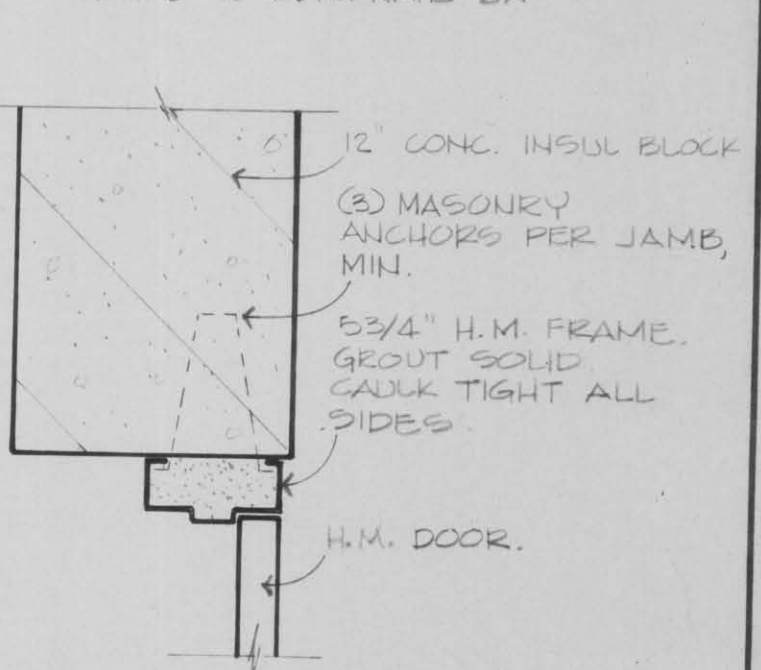
7 JAMB DETAIL 1/2" = 1'-0" LIMITED TO ALTERNATE 2A



12 EXTERIOR DOOR THRESHOLD 1/2" = 1'-0"



11 HEAD 1/2" = 1'-0"



10 JAMB 1/2" = 1'-0"

NO.	BY	DATE	REVISIONS	ITEM	DESIGN	CHECKED



LINCOLN COUNTY
VEHICLE STORAGE ADDITION
TOMAHAWK, WISCONSIN

SCHEDULES/DETAILS

FILE NO. 89003
DATE AUG. 88
A3