

STA	SIZE	I/E	W/LET	OUTLET
34+50	24 CSCP	1385.95	1385.32	
46+60	24 CSCP	1425.57	1424.65	

**CURVE DATA**  
 P.I. STA. 36+63.06  
 $\Delta = 86^{\circ}-26'-41''$   
 $D = 11^{\circ}-15'-00''$   
 $R = 509.30'$   
 $T = 478.63$   
 $L = 768.40$

**NOTE:** FROM U.S.H. 51 TO STA 29+00 CONSTRUCTION CONSISTS OF SHOULDER AND DITCH CONSTRUCTION, RECONSTRUCTION OF THE INTERSECTION AS DETAILED AT U.S.H. 51 AND ALL FINISH WORK AS SPECIFIED.

STA. 18+10 TO STA. 18+45 LT. INSTALL 36" x 24" CSCP IN DITCH OVER GAS LINE CROSSING. 2 ENDWALLS REQ'D.

STA. 24+50 LT. CONST. DRIVEWAY 1-18" CSCP REQ'D. 2 ENDWALLS REQ'D.

STA. 28+60 LT. CONST. DRIVEWAY 1-18" CSCP REQ'D. 2 ENDWALLS REQ'D.

STA. 32+80 RT. CONST. DRIVEWAY 1-18" CSCP REQ'D. 2 ENDWALLS REQ'D.

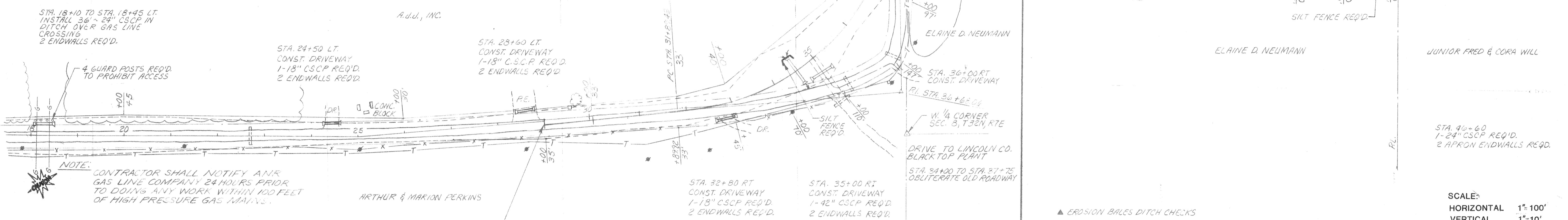
STA. 35+00 RT. CONST. DRIVEWAY 1-18" CSCP REQ'D. 2 ENDWALLS REQ'D.

STA. 34+00 TO STA. 37+75 OBLITERATE OLD ROADWAY

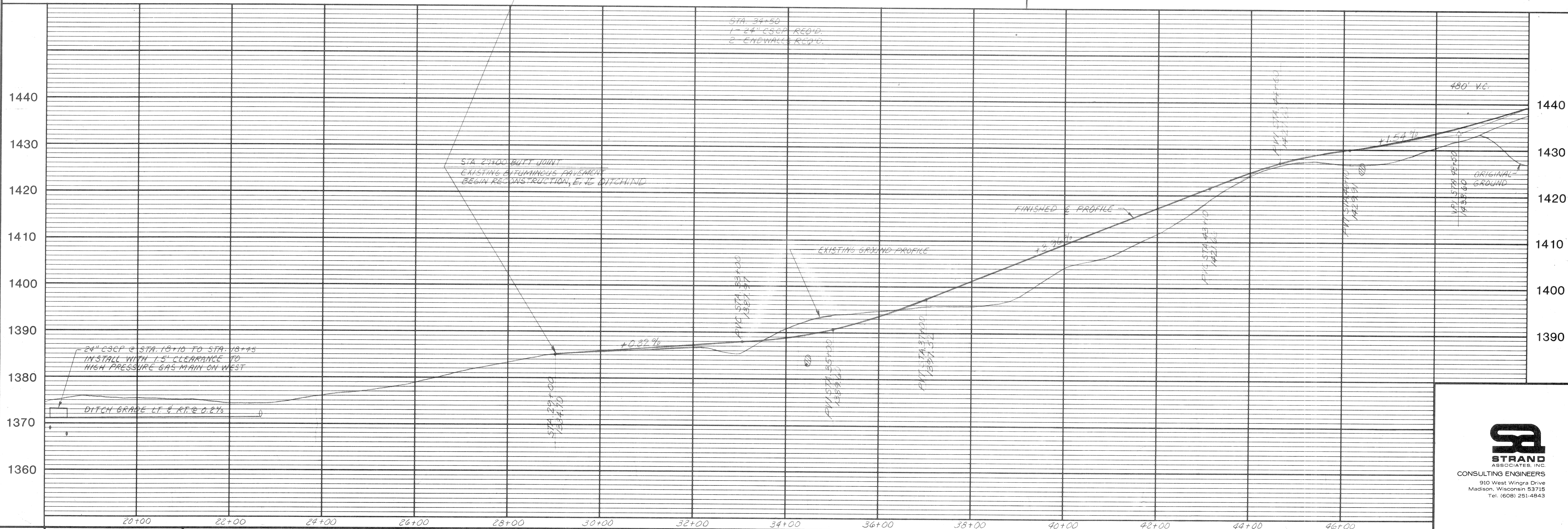
STA. 45+20 LT. CONST. DRIVEWAY 1-18" CSCP 2 ENDWALLS REQ'D.  
A.J.D., INC.

STA. 49+90 LT. CONST. DRIVEWAY 1-18" CSCP REQ'D. 2 ENDWALLS REQ'D.  
DANIEL J. LEE

STA. 46+60 1-24" CSCP REQ'D. 2 APRON ENDWALLS REQ'D.  
JUNIOR FRED & CORA WILL



SCALE:  
 HORIZONTAL 1" = 100'  
 VERTICAL 1" = 10'



DES BY R.F.W.  
 DWN BY R.C.U.  
 APP BY N.D.P.  
 DATE:

**ROAD RECONSTRUCTION**

**WAYSIDE ROAD**

**LINCOLN COUNTY, WISCONSIN**



171-420-5