

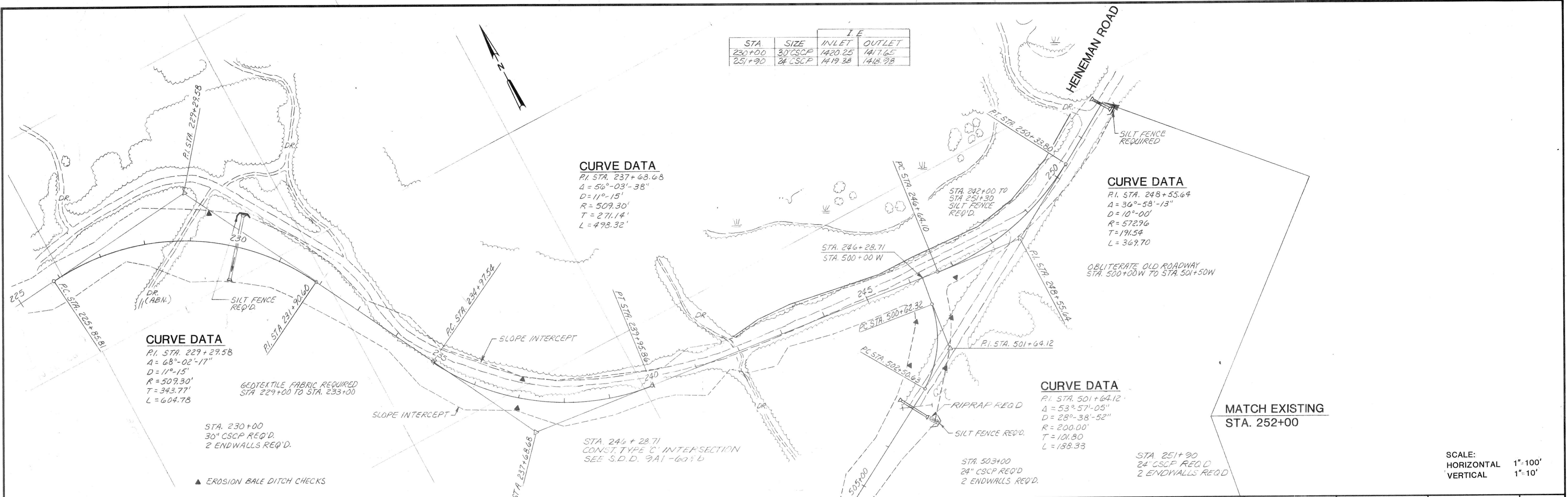
STA	SIZE	INLET	OUTLET
230+00	30" CSCP	1420.25	1417.65
251+90	24" CSCP	1419.38	1416.98

CURVE DATA
 P.I. STA. 237+68.68
 A = 56°-03'-38"
 D = 11°-15'
 R = 509.30'
 T = 271.14'
 L = 498.32'

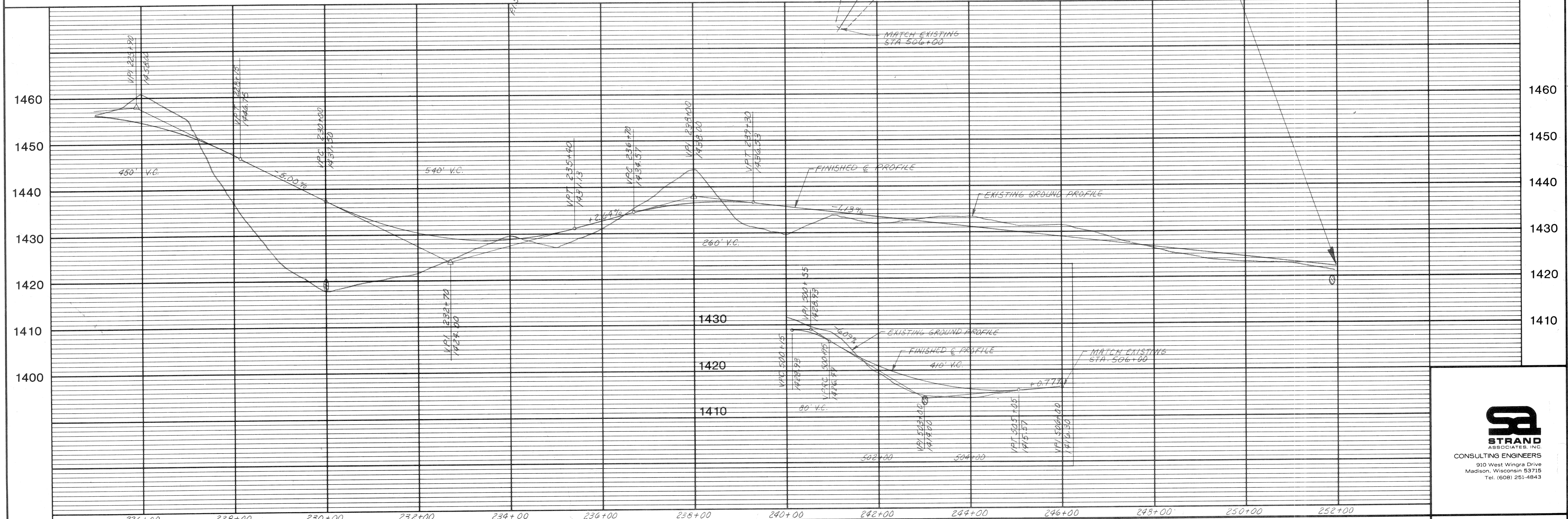
CURVE DATA
 P.I. STA. 229+29.58
 A = 68°-02'-17"
 D = 11°-15'
 R = 509.30'
 T = 343.77'
 L = 604.78

CURVE DATA
 P.I. STA. 248+55.64
 A = 36°-58'-13"
 D = 10°-00'
 R = 572.96'
 T = 191.54'
 L = 369.70'

CURVE DATA
 P.I. STA. 501+64.12
 A = 53°-57'-05"
 D = 28°-38'-52"
 R = 200.00'
 T = 101.80'
 L = 188.33'



SCALE:
 HORIZONTAL 1"=100'
 VERTICAL 1"=10'



DES BY P.F.W.
 DWN BY R.C.L.
 APP BY N.A.P.
 DATE

ROAD RECONSTRUCTION

OAK LAKE ROAD

LINCOLN COUNTY, WISCONSIN



171-420-12

SHEET OF