

STA	SIZE	INLET	OUTLET
205+00	24" CSCP	1471.13	1468.03
213+25	24" CSCP	1442.81	1442.85
217+00	48" CSCP	1443.95	1441.79

CURVE DATA

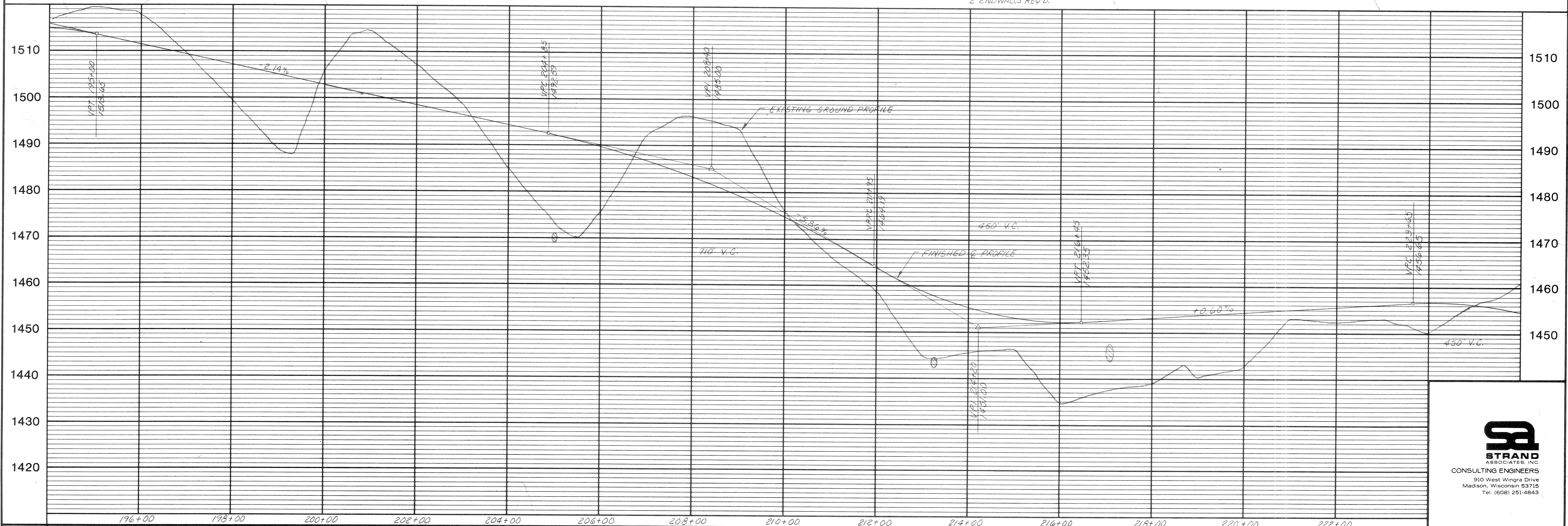
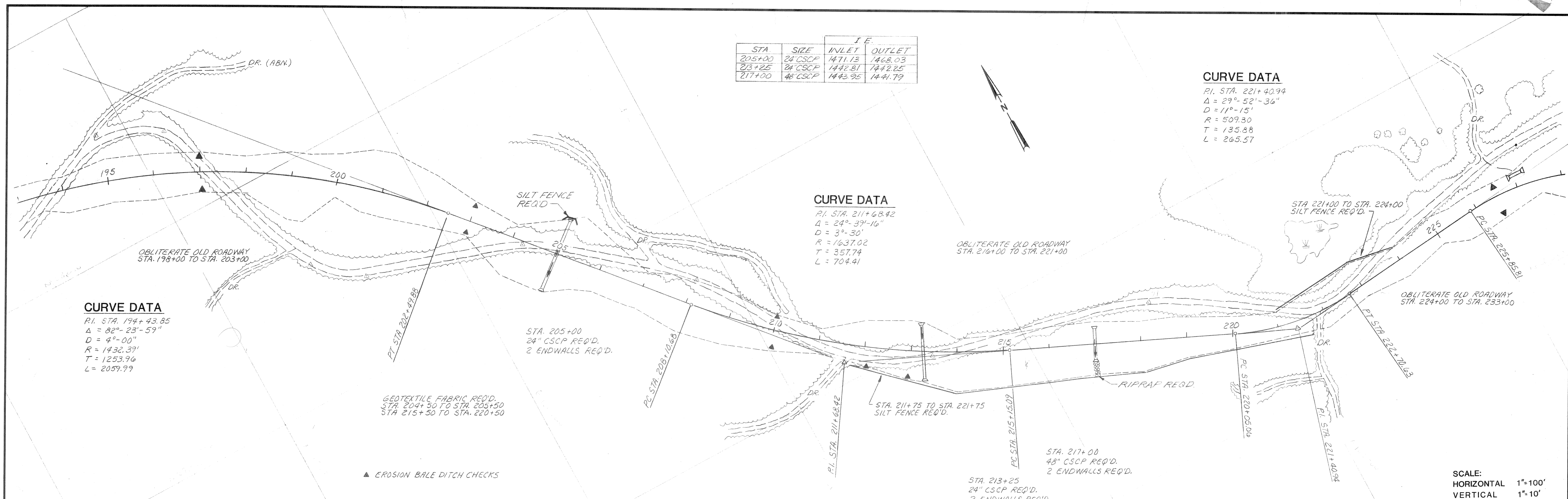
PI. STA. 221+40.94
 $\Delta = 29^\circ 52' 36''$
 $D = 11^\circ 15'$
 $R = 509.30$
 $T = 135.88$
 $L = 265.57$

CURVE DATA

PI. STA. 211+68.42
 $\Delta = 24^\circ 39' 16''$
 $D = 3^\circ 30'$
 $R = 1637.02$
 $T = 357.74$
 $L = 704.41$

CURVE DATA

PI. STA. 194+43.85
 $\Delta = 82^\circ 23' 59''$
 $D = 4^\circ 00'$
 $R = 1732.39'$
 $T = 1253.96$
 $L = 2059.99$



DES BY R.F.W.
 DWN BY R.C.V.
 APP BY N.D.A.
 DATE:

ROAD RECONSTRUCTION

OAK LAKE ROAD

LINCOLN COUNTY, WISCONSIN



171-420-11