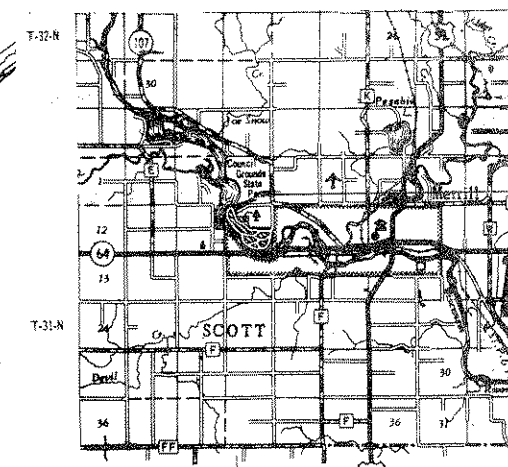


ALEXANDER LAKE
(WISCONSIN RIVER)

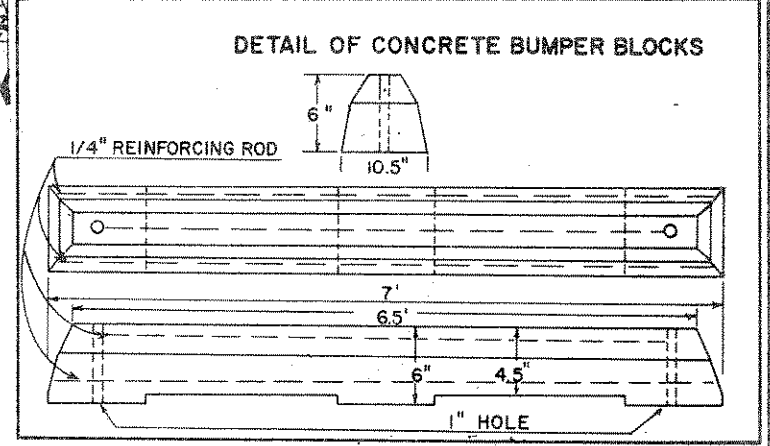
STATE OF WISCONSIN
DEPARTMENT OF TRANSPORTATION
DIVISION OF HIGHWAYS

PROJECT NUMBER	1941-1-70	SHEET NUMBER	1	TOTAL SHEETS	2
FEDERAL PROJECT DESIGNATION	PO-1(5)				

PROJECT PO-1(5)
1941-1-70



R-4-E
LOCATION SKETCH
SCALE
SCALE 1" = 1 MILE



ESTIMATE OF QUANTITIES

21101	PREPARATION OF FOUNDATION FOR BITUMINOUS PAVING	1	L.S.
40601	SINGLE AGGREGATE BITUMINOUS SURFACE	765	TON
40602	BITUMINOUS MATERIAL FOR SURFACE COURSE	45.9	TON
90001	PAINTING CENTERLINE & PARKING STALLS	1	L.S.
90002	FURNISH & INSTALL CONCRETE BUMPER BLOCKS	72	EA.

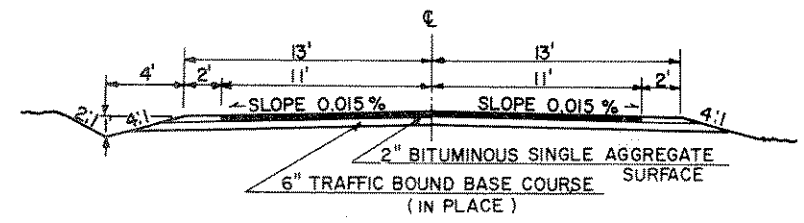
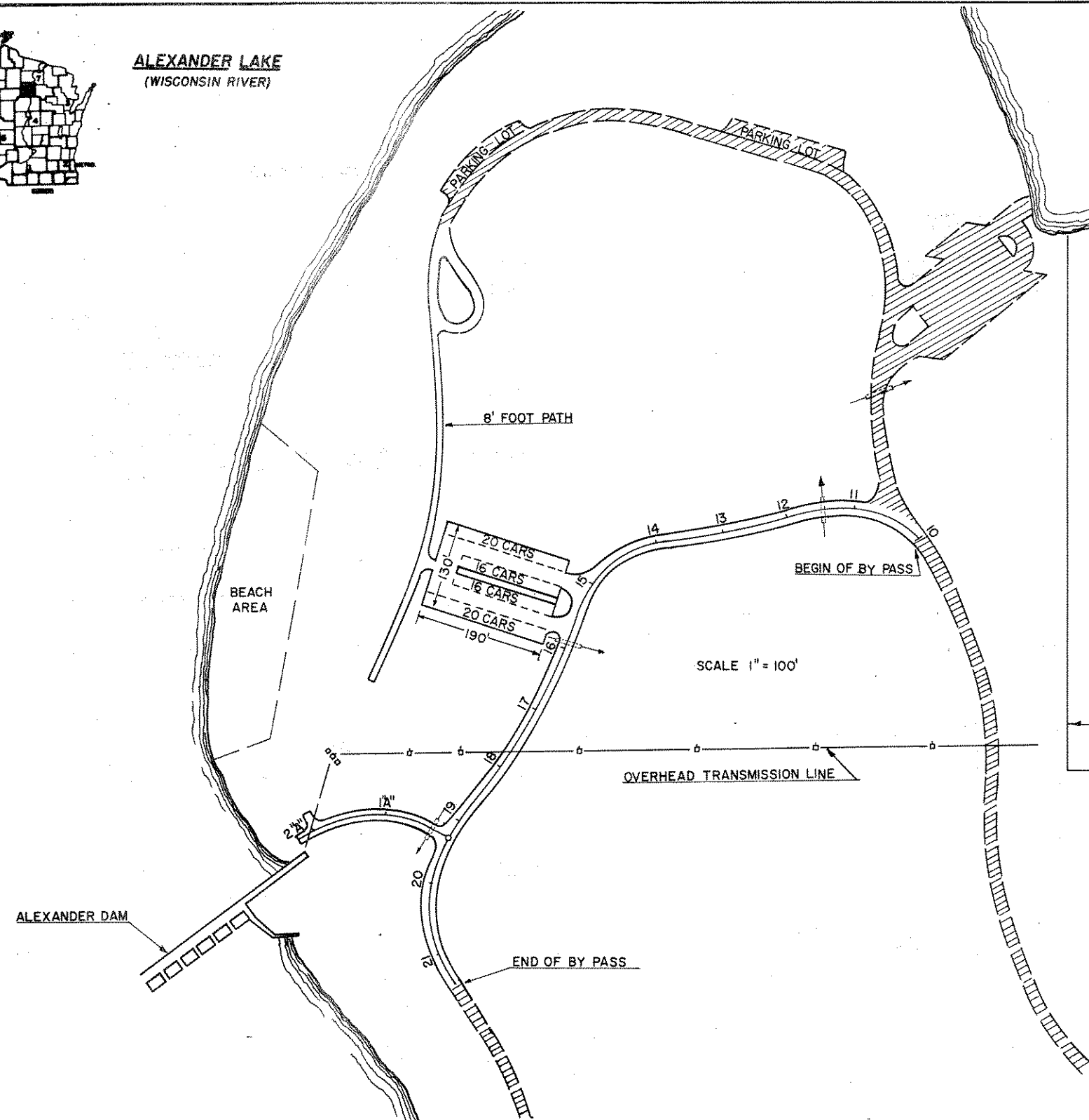
GENERAL NOTES

This Project to be executed under the standard specifications for road and bridge construction of the WISCONSIN DIVISION OF HIGHWAYS edition of 1969 and the special provisions as attached to proposals.

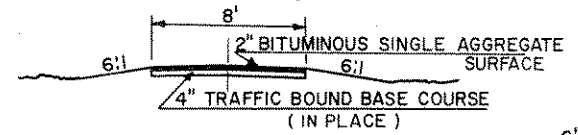
▣ AREAS NOT PART OF THIS CONTRACT.

STANDARD DETAIL DRAWINGS
14.1.1

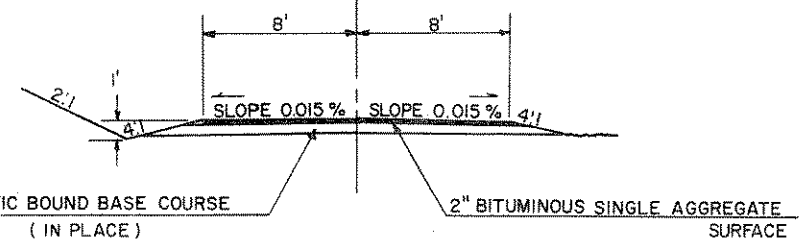
COUNCIL GROUNDS STATE FOREST
PARK ROAD LINCOLN COUNTY
LENGTH 0.50 MILES
PROJECT IDENTIFICATION NUMBER 1941-1-70 FEDERAL PROJECT DESIGNATION PO-1(5)
STATE OF WISCONSIN
DEPARTMENT OF TRANSPORTATION
DIVISION OF HIGHWAYS
CORRECT DATE: 4/2/69 *R.D. Schindler* DISTRICT ENGINEER
RECOMMENDED FOR APPROVAL DATE: 3/17/69 *E.J. Buehl* CHIEF DESIGN ENGINEER
APPROVED DATE: 4/21/69 *A. J. ...* STATE HIGHWAY ENGINEER



TYPICAL FINISHED SECTION OF BY PASS ROAD & TURN AROUND



TYPICAL FINISHED SECTION OF FOOT PATH



TYPICAL FINISHED SECTION "A" LINE ACCESS ROAD

NOTE: SHOULDERING MATERIAL ALSO IN PLACE