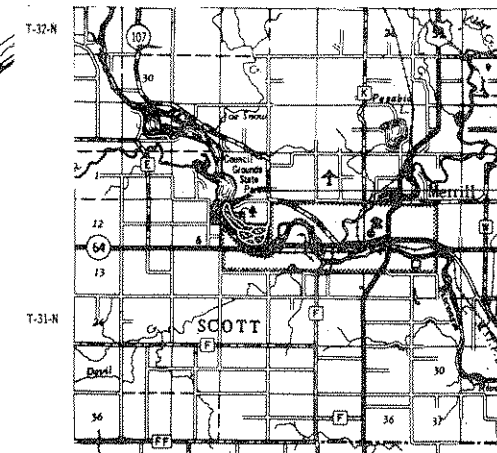


ALEXANDER LAKE
(WISCONSIN RIVER)

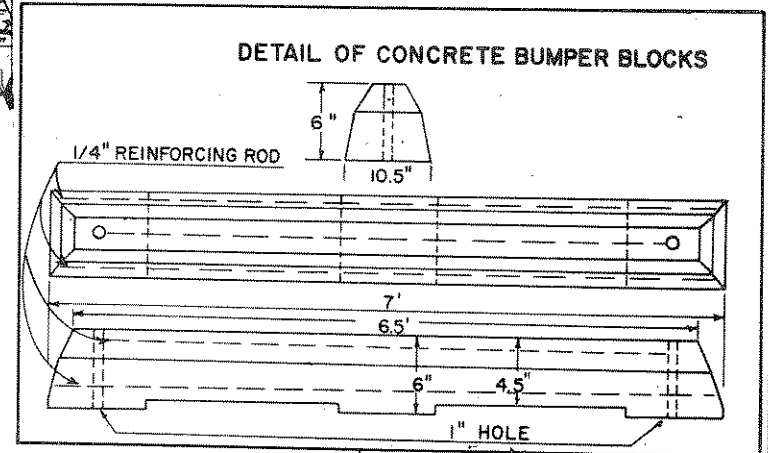
STATE OF WISCONSIN
DEPARTMENT OF TRANSPORTATION
DIVISION OF HIGHWAYS

PROJECT NUMBER	1	SHEET NUMBER	1	TOTAL SHEETS	2
FEDERAL PROJECT DESIGNATION		PO-1(5)			



LOCATION SKETCH
SCALE
SCALE 1" = 1 MILE

PROJECT PO-1(5)
1941-1-70



ESTIMATE OF QUANTITIES

21101	PREPARATION OF FOUNDATION FOR BITUMINOUS PAVING	1	L.S.
40601	SINGLE AGGREGATE BITUMINOUS SURFACE	765	TON
40602	BITUMINOUS MATERIAL FOR SURFACE COURSE	45.9	TON
90001	PAINTING CENTERLINE & PARKING STALLS	1	L.S.
90002	FURNISH & INSTALL CONCRETE BUMPER BLOCKS	72	EA.

GENERAL NOTES

This Project to be executed under the standard specifications for road and bridge construction of the WISCONSIN DIVISION OF HIGHWAYS edition of 1969 and the special provisions as attached to proposals.

▨▨▨▨ AREAS NOT PART OF THIS CONTRACT.

STANDARD DETAIL DRAWING
413

COUNCIL GROUNDS STATE FOREST

PARK ROAD LINCOLN COUNTY

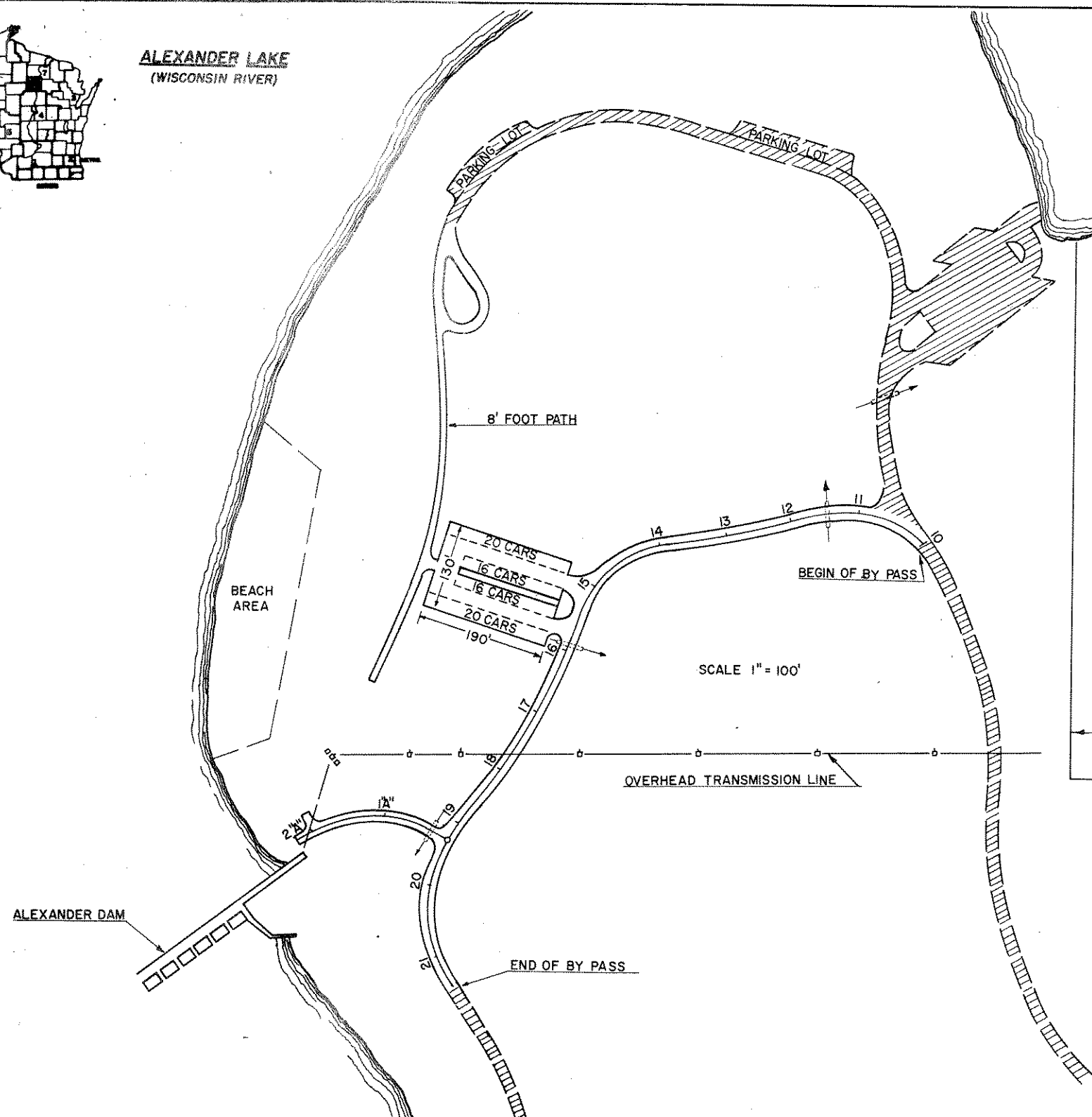
LENGTH 0.50 MILES
PROJECT IDENTIFICATION NUMBER FEDERAL PROJECT DESIGNATION
1941-1-70 PO-1(5)

STATE OF WISCONSIN
DEPARTMENT OF TRANSPORTATION
DIVISION OF HIGHWAYS

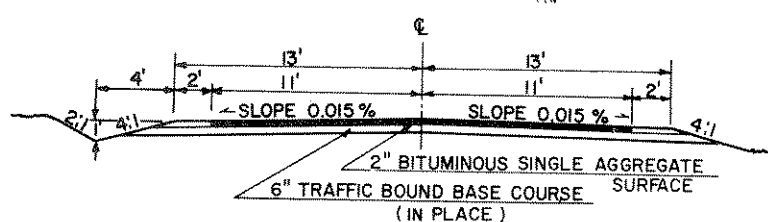
CORRECT DATE: 3/2/69
DISTRICT ENGINEER

RECOMMENDED FOR APPROVAL DATE: 4/17/69
CHIEF DESIGN ENGINEER

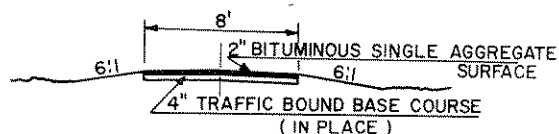
APPROVED DATE: 7/21/69
STATE HIGHWAY ENGINEER



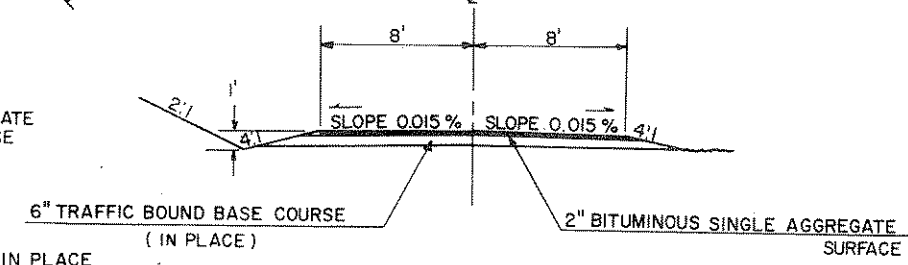
SCALE 1" = 100'



TYPICAL FINISHED SECTION OF BY PASS ROAD
& TURN AROUND



TYPICAL FINISHED SECTION OF FOOT PATH



TYPICAL FINISHED SECTION "A" LINE ACCESS ROAD

NOTE: SHOULDERING MATERIAL ALSO IN PLACE