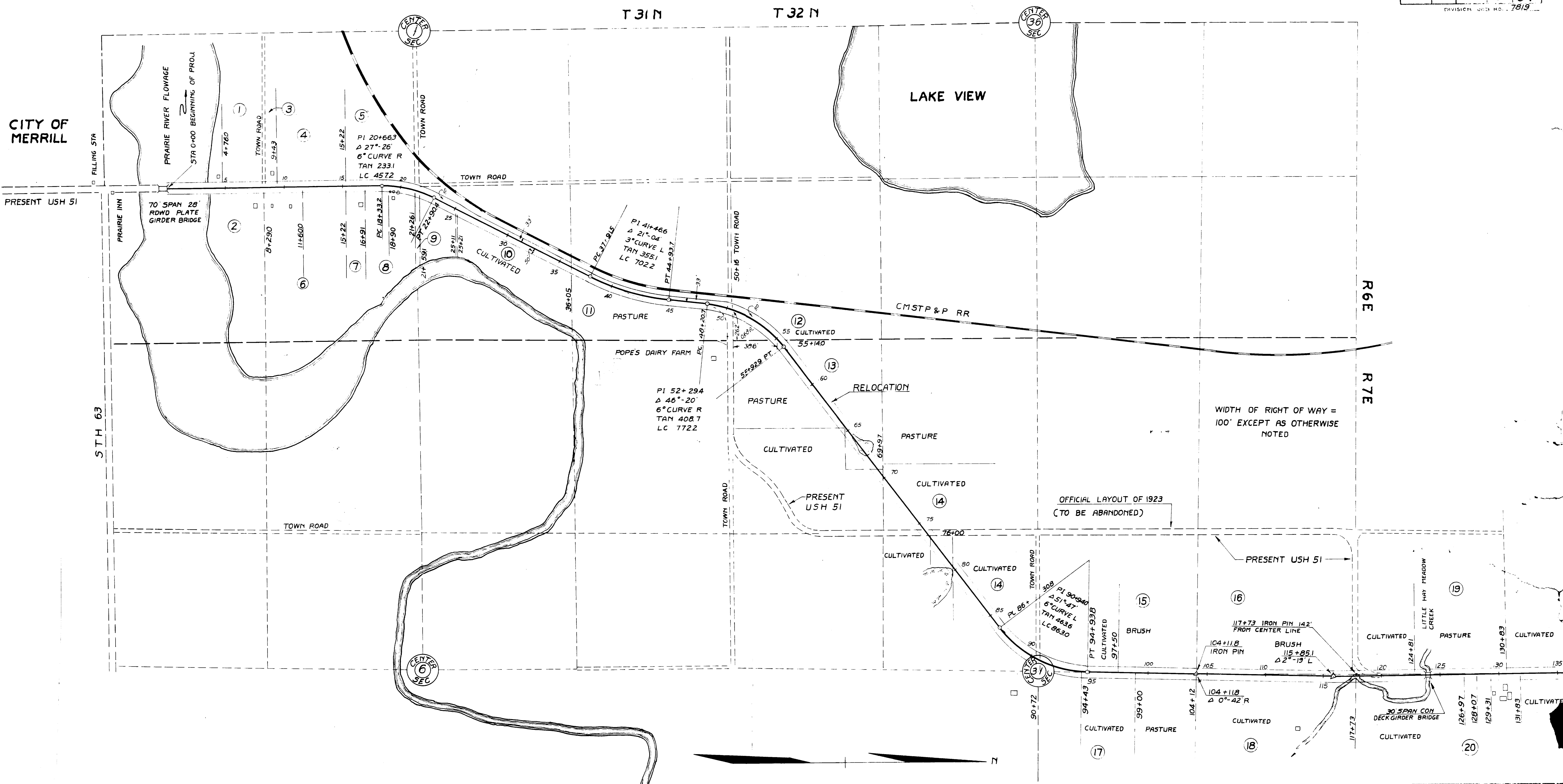


NO	OWNER	ADDRESS	ACRES	DESCRIPTION	MORTGAGEE	ADDRESS	R/W	FENCE	AMOUNT PAID			REMARKS
									BLDG'S	TOTAL	PAID	
1	HENRY GOETSCH		0.19	SW 1/4 OF SE 1/4 SEC 1 T 31N R 6E								
2	L.J. PETERSON		0.18	SE 1/4 OF SE 1/4 SEC 1 T 31N R 6E								
3	WILLIAM KREMPIN		0.04	NW 1/4 OF SE 1/4 SEC 1 T 31N R 6E								
4	HEINEMAN LBR CO.		0.23	NW 1/4 OF SE 1/4 SEC 1 T 31N R 6E								
5	FELIX GEERAERTS		0.18	NW 1/4 OF SE 1/4 SEC 1 T 31N R 6E								
6	H.G. GREEN		0.27	NE 1/4 OF SE 1/4 SEC 1 T 31N R 6E								
7	FELIX GEERAERTS		0.07	NE 1/4 OF SE 1/4 SEC 1 T 31N R 6E								
8	ALEX DRAPPIER		0.27	NE 1/4 OF SE 1/4 SEC 1 T 31N R 6E								
9	ALEX DRAPPIER		0.04	NE 1/4 OF SE 1/4 SEC 1 T 31N R 6E								
10	WILLIAM WERY		0.68	SE 1/4 OF NE 1/4 SEC 1 T 31N R 6E								
11	E.J. SCHAAD		0.51	NE 1/4 OF NE 1/4 SEC 1 T 31N R 6E								
12	CARL DAHLBERG		1.14	SE 1/4 OF SE 1/4 SEC 36 T 32N R 6E								
13	WILLIAM WERY		3.40	SW 1/4 OF SW 1/4 SEC 31 T 32N R 7E								
14	W.H. KAISER		4.76	NW 1/4 OF SW 1/4 SEC 31 T 32N R 7E								
15	W.H. KAISER		1.80	NE 1/4 OF SW 1/4 SEC 31 T 32N R 7E								
16	ALMA KURTH		1.25	SE 1/4 OF NW 1/4 SEC 31 T 32N R 7E								
17	ALMA KURTH		1.26	NE 1/4 OF NW 1/4 SEC 31 T 32N R 7E								
18	J.L. & C.W. MILLER		1.87	SW 1/4 OF NE 1/4 SEC 31 T 32N R 7E								
19	JOHN A. WEBER		0.51	NW 1/4 OF NE 1/4 SEC 31 T 32N R 7E								
20	HARRY C. SMITH		0.51	SE 1/4 OF SW 1/4 SEC 30 T 32N R 7E								
21	MARY KRAFT		1.02	SW 1/4 OF SE 1/4 SEC 30 T 32N R 7E								
22	MARY KRAFT		0.51	NW 1/4 OF SE 1/4 SEC 30 T 32N R 7E								
23	FRANK F. & MINNIE L. PIETERS		0.53	NE 1/4 OF NW 1/4 SEC 30 T 32N R 7E								
24	JOHN G. WEBER		0.53	SW 1/4 OF NE 1/4 SEC 30 T 32N R 7E								
25	JOHN G. WEBER		0.52	NW 1/4 OF NE 1/4 SEC 30 T 32N R 7E								
26	PETER J. GOVIG		0.52	NE 1/4 OF NW 1/4 SEC 30 T 32N R 7E								
27	CHARLES A. & LILLIAN LEISMAN		0.21	SE 1/4 OF SW 1/4 SEC 19 T 32N R 7E	MIKE ORLOWSKI							
27	MIKE KAKLAUSKAS		0.21	SW 1/4 OF SE 1/4 SEC 19 T 32N R 7E								
TOTAL			22.70									

PLAT OF RIGHT OF WAY REQUIRED  
 FED AID PROJECT NO. 23  
 MERRILL - IRMA ROAD  
 USH 51 LINCOLN COUNTY  
 SCALE 1" = 400'

FED. ROAD DIST. NO.	STATE	FED. AID PROJ. NO.	SHEET NO.	TOTAL SHEETS
4	WISC	23	3	34

DIVISION PROJ. NO. 7819



PLAT OF RIGHT OF WAY REQUIRED  
 FEDERAL AID PROJECT NO. 23  
 MERRILL - IRMA ROAD  
 USH 51 LINCOLN COUNTY  
 SCALE 1" = 400'