

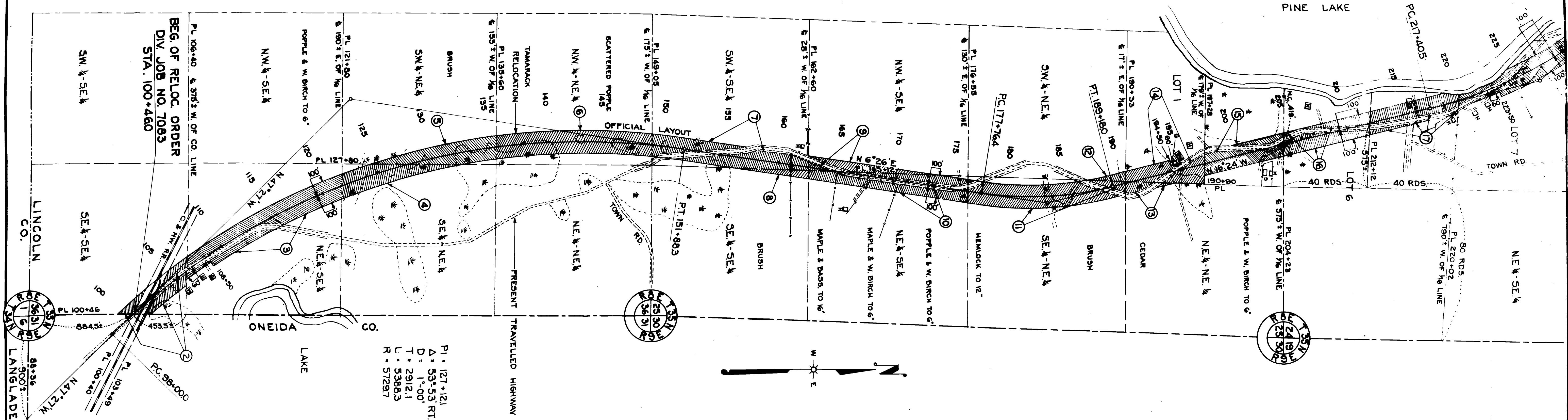
FED. ROAD DIST. NO.	STATE	STATE DIST. NO.	SHEET NO.	TOTAL SHEETS
4	WISC.	7083	4	

DIVISION JOB NO. 7083

PI. 227+184
 Δ = 28°43' LT.
 D = 1°30'
 T = 9779
 L = 1914.4
 R = 3819.8

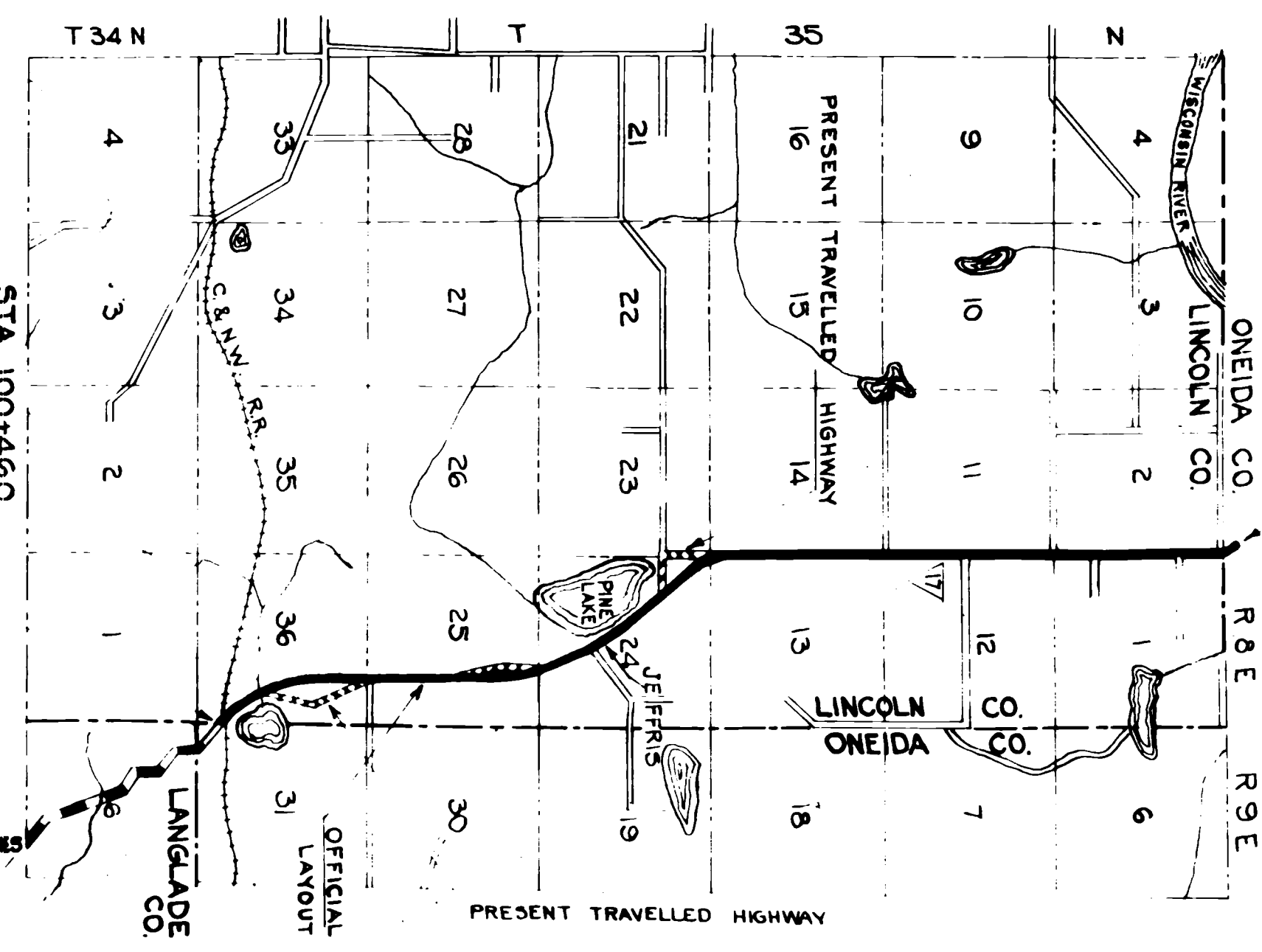
PI. 183+550
 Δ = 22°50' LT.
 D = 2°00'
 T = 5786
 L = 1141.6
 R = 2864.9

TOWN OF HARRISON



BEG. OF RELOC. ORDER
 DIV. JOB NO. 7083
 STA. 100+460

PI. 127+121
 Δ = 53°53' RT.
 D = 1°00'
 T = 2912.1
 L = 5388.3
 R = 5729.7



STA. 100+460
 BEG. OF RELOC. ORDER
 DIV. JOB NO. 7083

SCALE
 0 1/2 1
 MILES

STA. 436+000
 END OF RELOC. ORDER
 DIV. JOB NO. 7083
 END OF STATE PROJECT 7083

S.T.H. 17 TO RHINELANDER-6 MILES

S.T.H. 17 TO MERRILL-29 MILES

REVISED 1-9-24
 REVISED 2-16-39

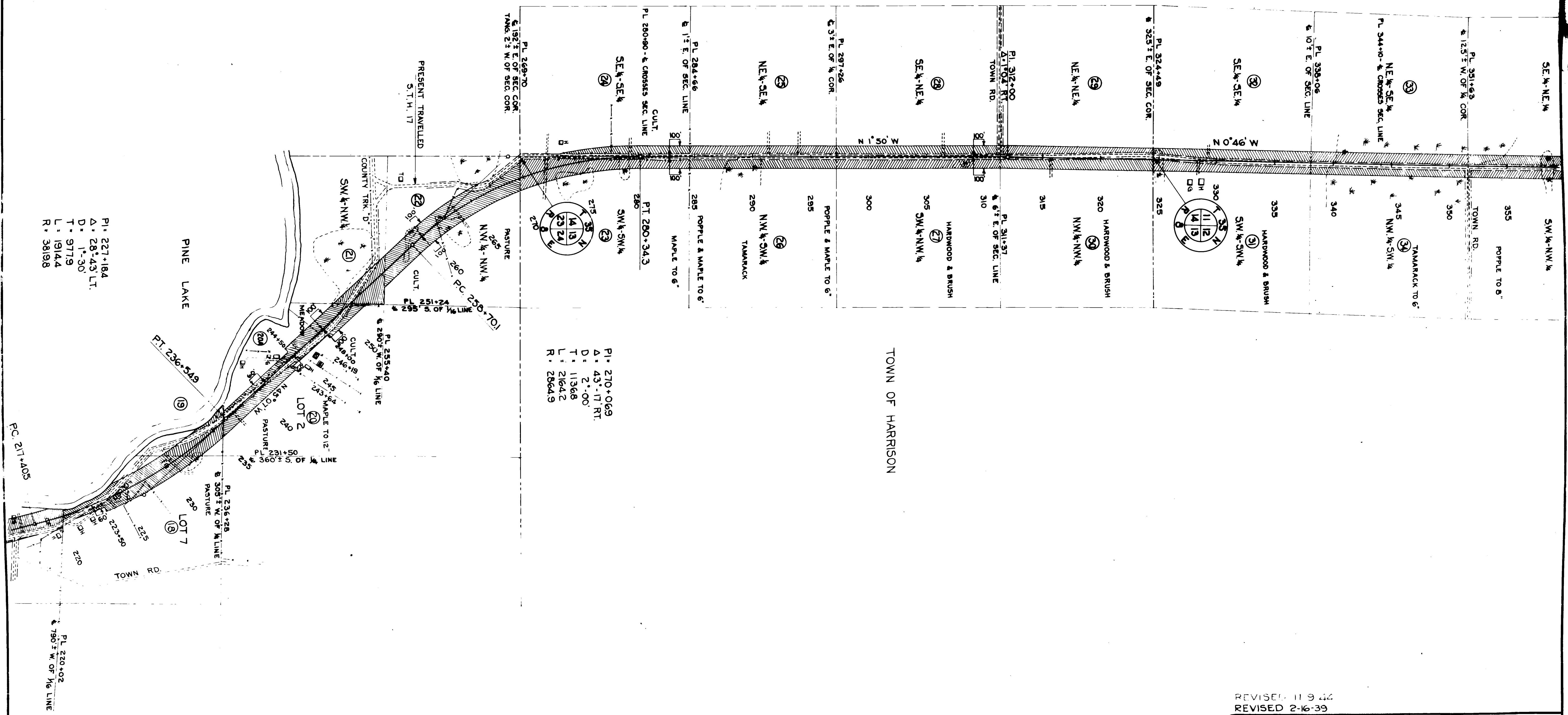
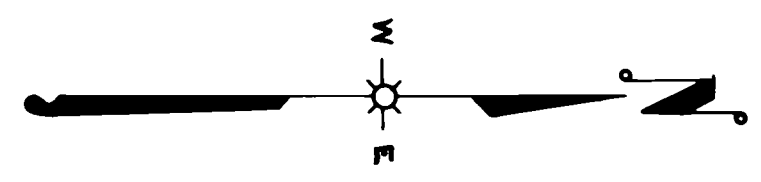
PLAT OF RIGHT OF WAY REQUIRED
 DIVISION JOB NO. 7083
 PARRISH - RHINELANDER ROAD
 S.T.H. NO. 17 LINCOLN AND ONEIDA COUNTIES

SCALE
 0 200' 400' 800'
 100' 300'

DJ 7083

FED. ROAD DIST. NO.	STATE	STATE PROJ. NO.	SHEET NO.	TOTAL SHEETS
4	WISC.	7083	5	

DIVISION JOB NO. 7083



PI. 270+06.9
 Δ. 43°-17' RT.
 D. = 2'-00"
 T. = 113.68
 L. = 216.42
 R. = 286.49

PI. 227+18.4
 Δ. 28°-43' LT.
 D. = 1'-30"
 T. = 97.79
 L. = 191.44
 R. = 381.98

REVISED 11-9-44
 REVISED 2-16-39

PLAT OF RIGHT OF WAY REQUIRED
 DIVISION JOB NO. 7083
 PARRISH - RHINELANDER ROAD
 S.T.H. NO. 17 LINCOLN AND ONEIDA COUNTIES

SCALE
 0 100 200 300 400 500 600

DJ 7083