

R/W PROJECT NUMBER	SHEET NUMBER	TOTAL SHEETS
1000-47-27	4.0	7

PLAT OF RIGHT OF WAY REQUIRED FOR
C. M. ST. P & P RR. ABANDONMENT
TOMAHAWK - HEAFFORD JCT.
 LINCOLN COUNTY

CONSTRUCTION PROJECT NUMBER

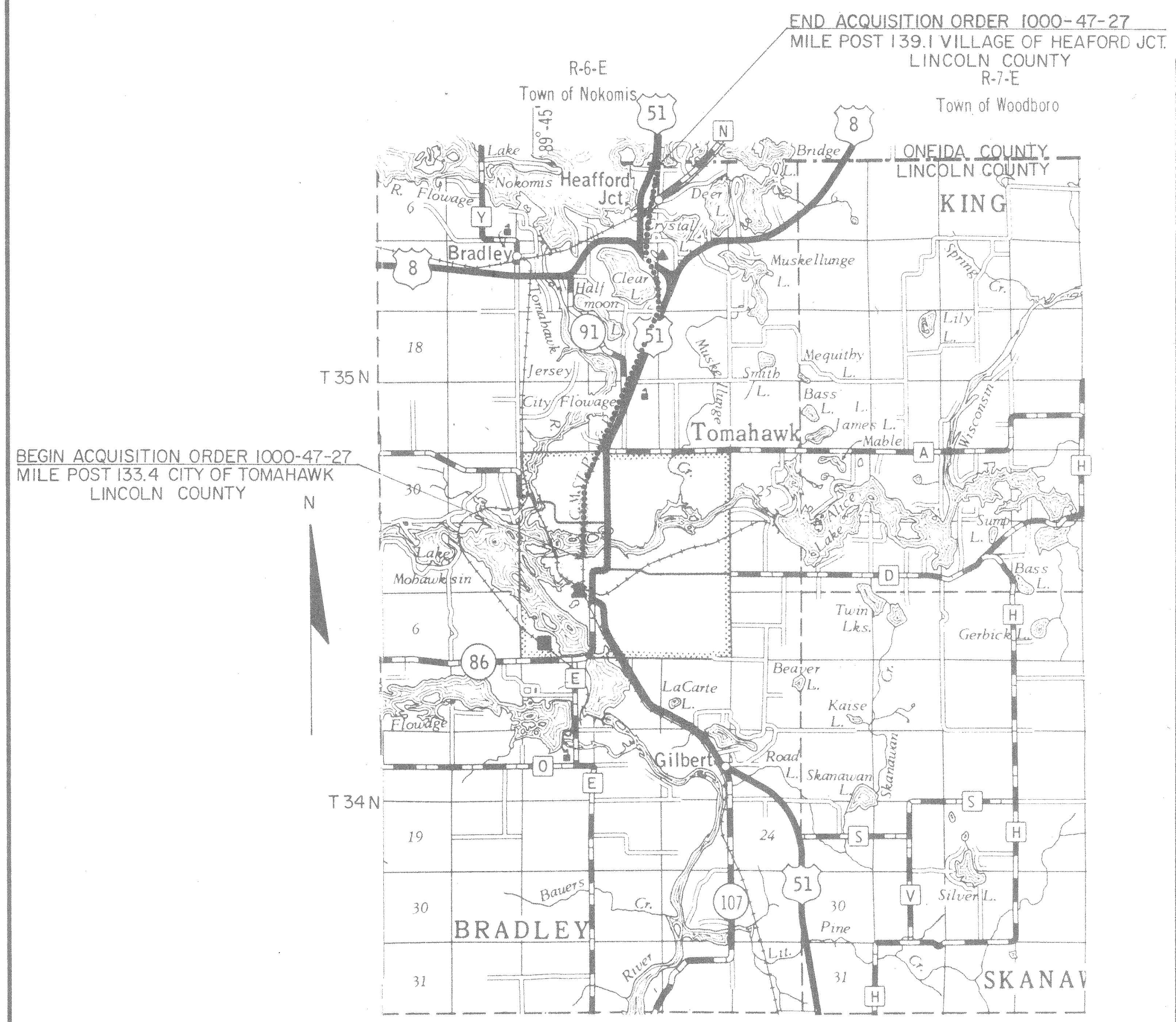
SCHEDULE OF LANDS AND INTERESTS REQUIRED

PARCEL NO.	SHEET NO.	OWNER	INTEREST REQUIRED	TOTAL ACRES	OPERATIONS PROJECT NO.
1	4.1 To 4.4	-Chicago, Milwaukee, St. Paul, & Pacific Railroad Co.	FEE	40.61	1000-47-27
2	4.3 To 4.4	-State of Wisconsin, Dept. of Transportation	FEE	6.11	1000-47-27
3	4.3	Howard F. Coomans	FEE	0.03	1000-47-27
4	4.3	George F. Sanders Jr.	FEE	0.58	1000-47-27
5	4.3	Antone E. Schlisling	FEE	0.59	1000-47-27
6	4.3	Ronald R. Bohnert	FEE	1.66	1000-47-27
7	4.3	Jerry W. Hagar	FEE	1.89	1000-47-27
8	4.3	Stanley A. Torkelson	FEE	0.25	1000-47-27
9	4.3	Carol G. Vander Voort	FEE	0.12	1000-47-27
10	4.3	Richard R. Fabera	FEE	0.37	1000-47-27
11	4.3	Patrie R. Culbert	FEE	0.33	1000-47-27
12	4.3	Paul Van Strydonk	FEE	1.01	1000-47-27
13	4.3	Town of Bradley School Dist. No. 2	FEE	0.33	1000-47-27
14	4.3	Patric Domaika	FEE	0.64	1000-47-27
15	4.3	John Kangas	FEE	0.98	1000-47-27
16	4.3	Leon D. Weiznicker	FEE	3.24	1000-47-27
17	4.4	John F. Hein	FEE	4.96	1000-47-27
18	4.4	Benedict J. Cherney	FEE	2.80	1000-47-27
19	4.5	Harold L. Knop	FEE	3.04	1000-47-27
20	4.5	Gerald E. Roberts ET. AL.	FEE	6.05	1000-47-27
21	4.5	Arthur J. Beuke	FEE	0.31	1000-47-27
22	4.5	Anthony D. Hrabec	FEE	0.30	1000-47-27
23	4.5	Robert R. Elias	FEE	1.08	1000-47-27
24	4.5	John E. Stillings	FEE	0.62	1000-47-27
25	4.5	M & M Recreation Enterprises Inc.	FEE	0.30	1000-47-27
26	4.5	Henry R. Neibauer ET. AL.	FEE	0.39	1000-47-27
27	4.5	Anna Lee Theisen	FEE	4.94	1000-47-27
28	4.5	Kenneth C. Rathke	FEE	0.57	1000-47-27
29	4.6	Christian Voermans	FEE	0.03	1000-47-27
30	4.6	Donald R. Logan	FEE	0.30	1000-47-27
31	4.6	George E. Rezek	FEE	0.47	1000-47-27
32	4.6	Richard Johnson	FEE	0.26	1000-47-27
33	4.6	George Derleth	FEE	0.34	1000-47-27
34	4.6	Richard Klimek	FEE	1.15	1000-47-27
35	4.6	Victor B. Klimek	FEE	0.32	1000-47-27
36	4.6	Randy Schmidt	FEE	0.34	1000-47-27
37	4.6	Gene Moss	FEE	0.34	1000-47-27
38	4.6	Edwin L. Moss	FEE	0.16	1000-47-27
39	4.6	Otto C. Mielke	FEE	0.48	1000-47-27
40	4.6	Mary J. Frey	FEE	0.25	1000-47-27
41	4.6	Kenneth Goldbeck	FEE	0.46	1000-47-27
42	4.6	Jerome Lechleitner	FEE	0.48	1000-47-27
43	4.6	Wayne R. Plachetka	FEE	3.42	1000-47-27
44	4.6	Nekoosa Edwards	FEE	5.26	1000-47-27
45	4.6	Fred Christensen	FEE	0.34	1000-47-27
1	4.3-46	Chicago, Milwaukee, St. Paul and Pacific Railroad Co.	Q.C.D.	57.89	1000-47-27

* FEE TITLE TO ALL THAT LAND OF THE OWNER LYING WITHIN THE LIMITS OF THIS PROJECT AS SHOWN HEREON, TOGETHER WITH ALL TRACK AND RELATED MATERIALS LYING WITHIN THE RAILROAD MILE POSTS, 133.4 TO 139.1

** TOTAL ACREAGE LYING WITHIN THE LIMITS OF THIS PROJECT HEREON IS 98.50 ACRES.

*** TOTAL ACRES OF REVERSIONARY INTERESTS LYING WITHIN THE LIMITS OF THIS PROJECT HEREON IS 57.89 ACRES.



LAYOUT
 SCALE 0 1 2 MILES
 TOTAL NET LENGTH OF CENTERLINE 5.7 MILES

REVISION DATE	STATE OF WISCONSIN DEPARTMENT OF TRANSPORTATION
Approved	
Date 10/24/79	<i>R.D. Schindler</i> District Transportation Engineer
Approved	
Date	Director, Bureau of Real Estate
	U.S. DEPARTMENT OF TRANSPORTATION FEDERAL HIGHWAY ADMINISTRATION REGION 5 WISCONSIN DIVISION
Approved	
Date	