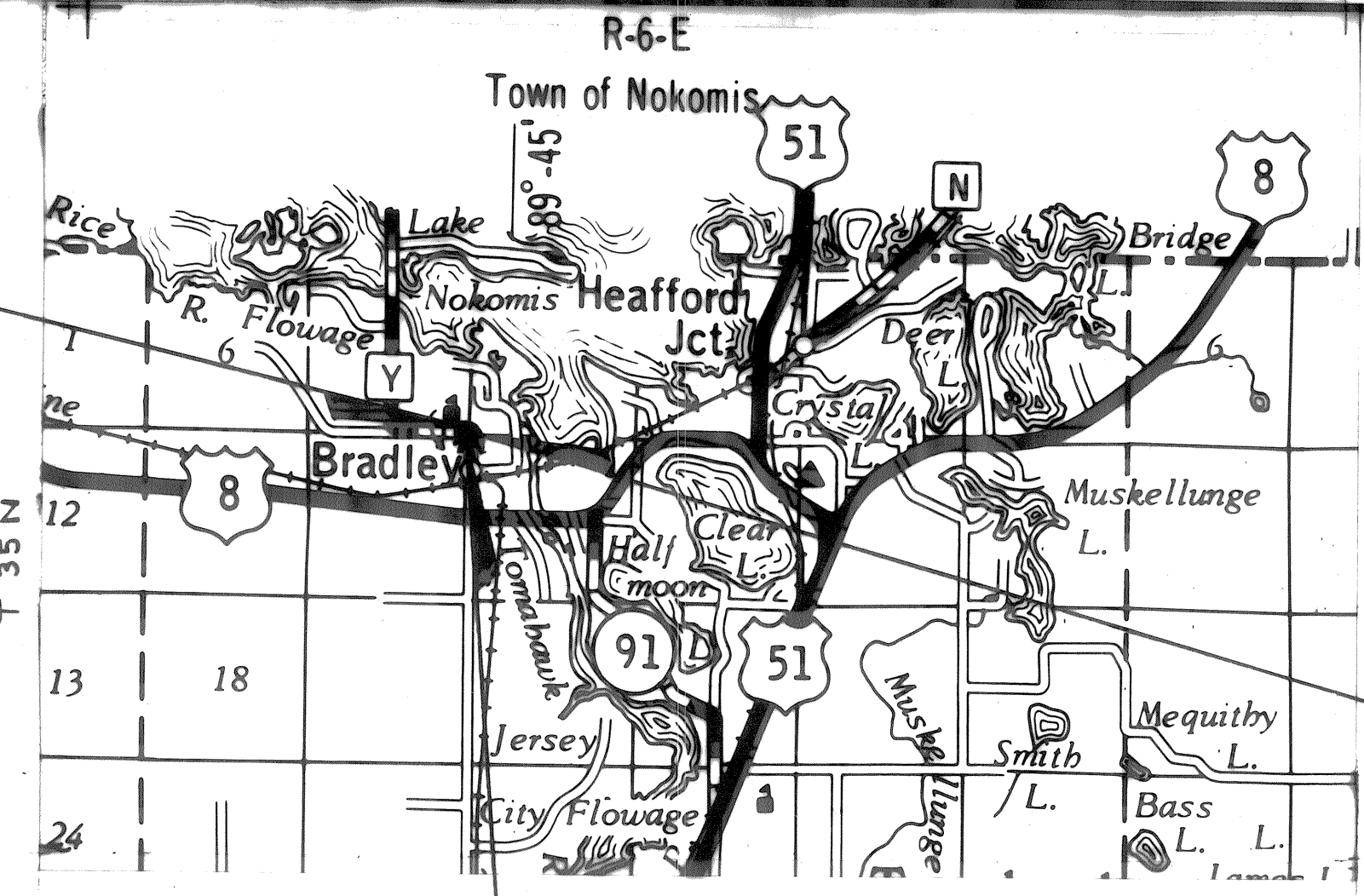


REVISION DATE	R/W PROJECT NUMBER	SHEET NUMBER
	9433-1-00	4-1
FEDERAL PROJECT NUMBER		
PLAT OF RIGHT OF WAY REQUIRED FOR U.S.H. 8-N. COUNTY LINE ROAD C.T.H. "Y" LINCOLN COUNTY		
SCALE 1 INCH = 50 FT.		DATE
CONSTRUCTION PROJECT NUMBER		4
9433-1-70		



END RELOCATION ORDER
PROJECT 9433-1-00

BEGIN RELOCATION ORDER
PROJECT 9433-1-00

EQUATION: 22+24.9 BK. =
23+72.6 AH.

SCALE: 1 IN. = 1 MI.

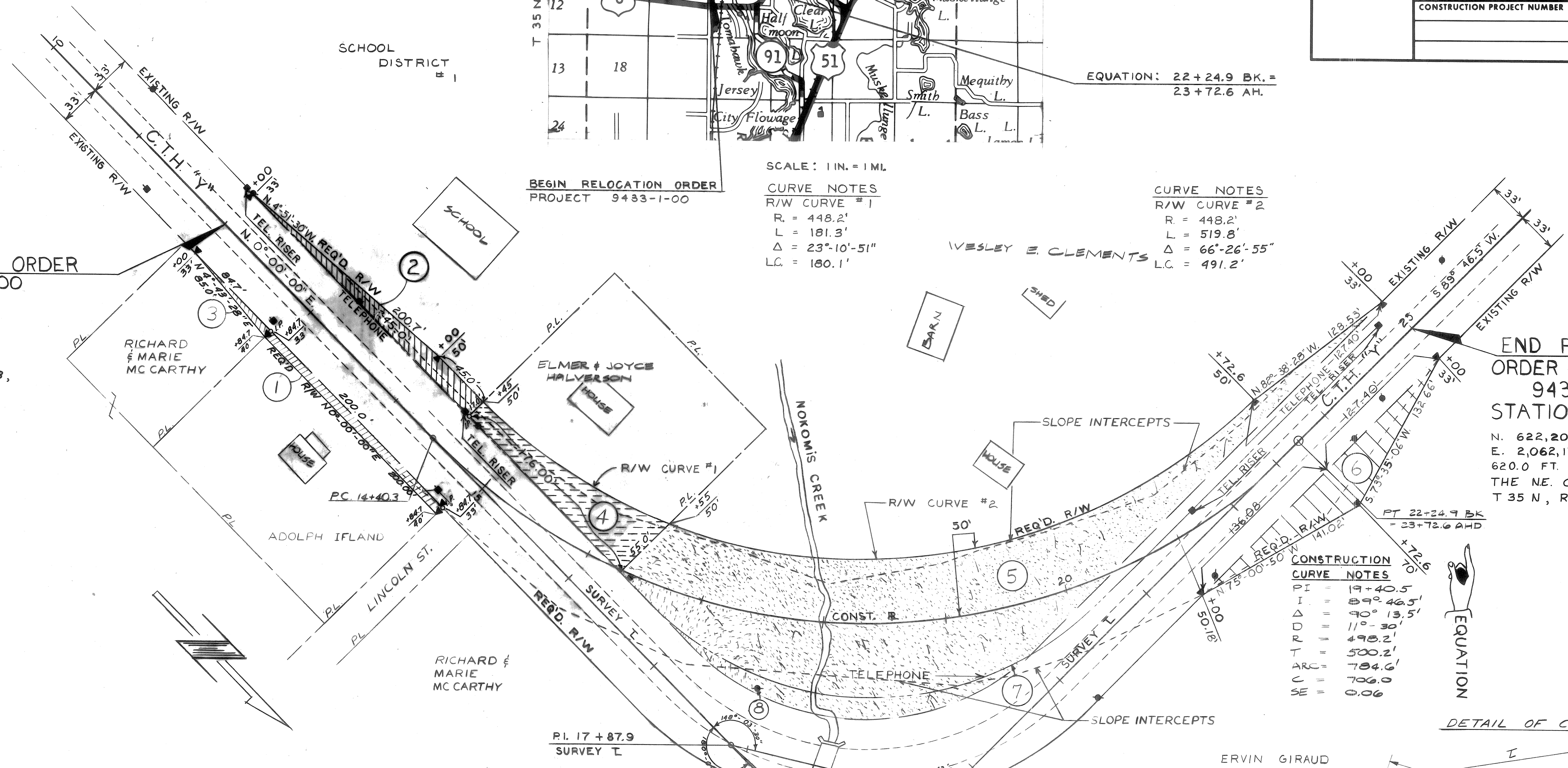
CURVE NOTES
R/W CURVE #1
R = 448.2'
L = 181.3'
Δ = 23°-10'-51"
LC = 180.1'

CURVE NOTES
R/W CURVE #2
R = 448.2'
L = 519.8'
Δ = 66°-26'-55"
LC = 491.2'

WESLEY E. CLEMENTS

BEGIN RELOCATION ORDER
PROJECT 9433-1-00
STATION 12+00
N. 621,460 (± 200')
E. 2,062,800 (± 200')
7.6' E. & 740.9' S. OF
THE N.E. CORNER SEC. 8,
T 35 N, R 6 E

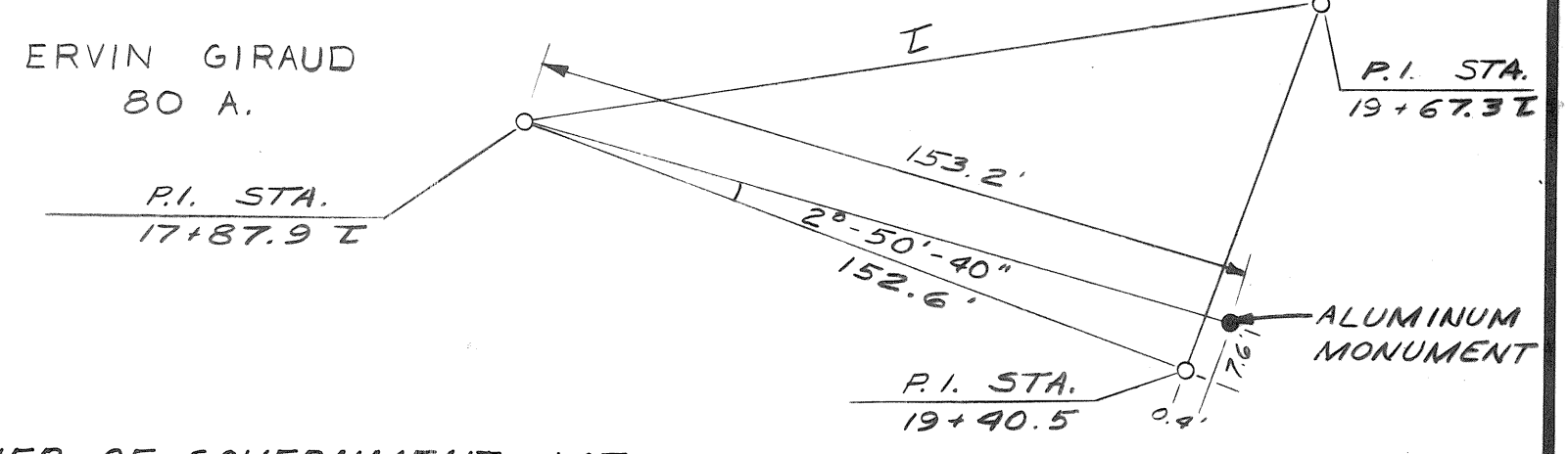
END RELOCATION ORDER
PROJECT 9433-1-00
STATION 25+00
N. 622,200 (± 200')
E. 2,062,170 (± 200')
620.0 FT. W. & 2.9' S. OF
THE N.E. CORNER SEC. 8,
T 35 N, R 6 E



CONSTRUCTION CURVE NOTES

PI	= 19+40.5
I	= 89°-46.5'
Δ	= 40°-13.5'
D	= 11°-30'
R	= 498.2'
T	= 500.2'
ARC	= 784.6'
C	= 700.0
SE	= 0.06

DETAIL OF CORNER TIE



NOTE:
THE N.W. CORNER OF GOVERNMENT LOT NO. 2 IS RECORDED AS BEING 422 FT. SOUTH OF THE N.E. CORNER OF SECTION 8 ON THE ORIGINAL PLAT DATED 1878. EXISTING MONUMENTS INDICATE THIS DISTANCE TO BE 426.2 FT. BEARINGS SHOWN ARE MAGNETIC BEARINGS TO THE NEAREST MINUTE. COORDINATES ARE SCALED FROM U.S.G.S. TOPOGRAPHIC MAP, BRADLEY QUADRANGLE, CENTRAL WISCONSIN COORDINATE ZONE, FOR IDENTIFICATION ONLY.

STANDARD ABBREVIATIONS AND SYMBOLS

FT.	FEET
IN.	INCH
N.	NORTH
E.	EAST
S.	SOUTH
R/W	RIGHT-OF-WAY
P.L.	PROPERTY LINE
-D-	UNDERGROUND FACILITY
—	POWER POLE
⊙	TELEPHONE POLE
REQ'D.	REQUIRED
CONST.	CONSTRUCTION
R	REFERENCE LINE
T	TRANSIT LINE

PARCEL NO.	OWNER	INTEREST REQ'D.	ACRES REQUIRED		TOTAL REMAINING ACRES	OPERATIONS PROJECT NUMBER
			NEW R/W REQ'D.	EXISTING R/W		
1	ADOLPH IFLAND	FEE	0.032			9433-1-00
2	SCHOOL DISTRICT #1	FEE	0.065			"
3	RICHARD & MARIE MCCARTHY	FEE	0.007			"
4	ELMER & JOYCE HALVERSON	FEE	0.125			"
5	WESTLEY E. CLEMENTS	FEE	1.07			"
6	ERVIN GIRAUD	FEE	0.112			"
7	GENERAL TELEPHONE CO.	RELEASE OF RIGHTS	-			"
8	WIS. PUBLIC SERVICE CORP.	RELEASE OF RIGHTS	-			"

APPROVED FOR
LINCOLN COUNTY
BY
Duane A. O'Connell
COUNTY COMMISSIONER
3-17-78
DATE