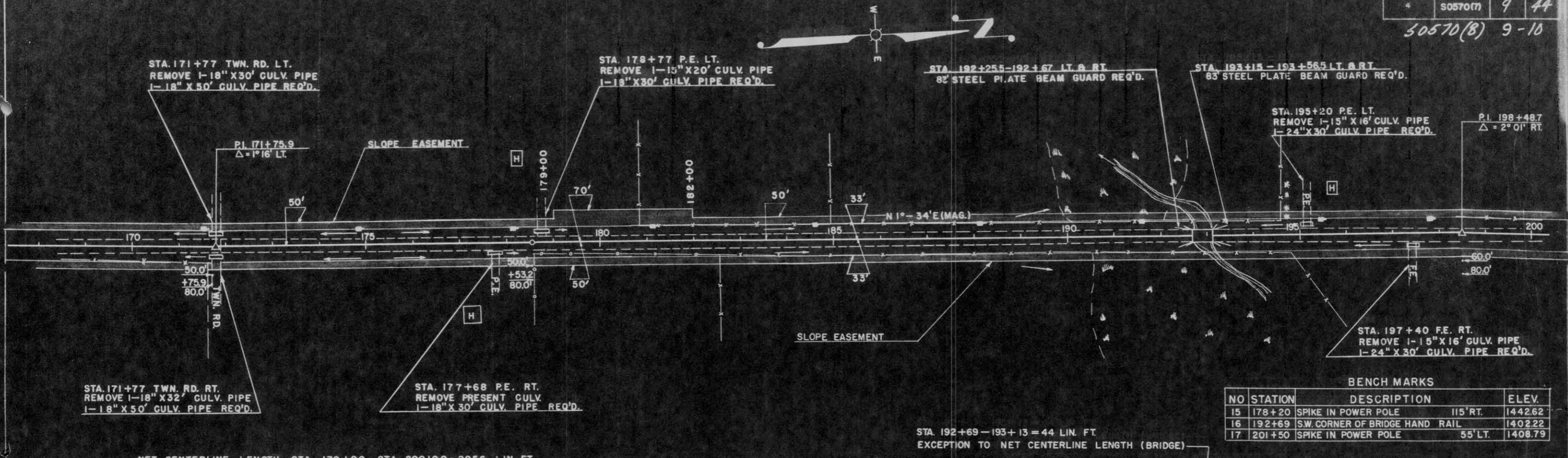


S.P. N. DIVISION	PROJECT	SHEET NUMBER	TOTAL SHEETS
4	S0570(7)	9	44

50570(8) 9-10

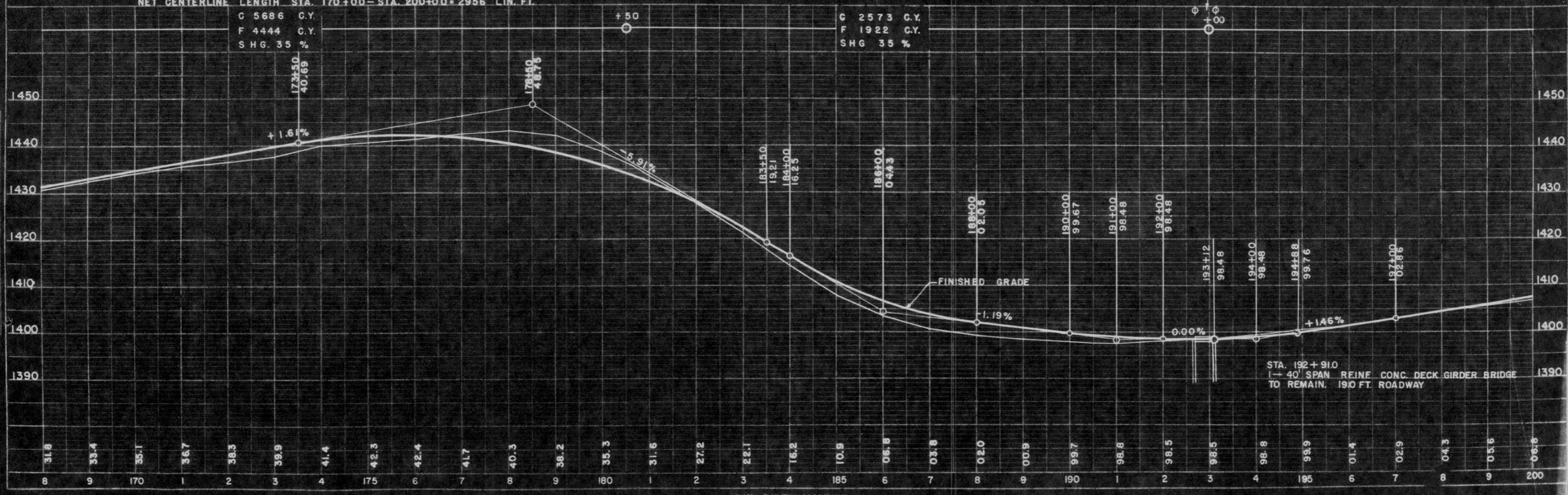
DATE 3-7-58
BY D.C.S. D.L.J.
CHECKED
NOTE: BEARS ALIGNMENT CHECKED
BY IBM

DATE 3-7-58
BY P.J.H. D.L.J.
CHECKED
NOTE: BEARS ALIGNMENT CHECKED
BY IBM



BENCH MARKS

NO	STATION	DESCRIPTION	ELEV.
15	178+20	SPIKE IN POWER POLE 115' RT.	1442.62
16	192+69	S.W. CORNER OF BRIDGE HAND RAIL	1402.22
17	201+50	SPIKE IN POWER POLE 55' LT.	1408.79



NET CENTERLINE LENGTH STA. 170+00 - STA. 200+00 = 2956 LIN. FT.

C 5686 C.Y.
F 4444 C.Y.
SHG. 35 %

G 2573 C.Y.
F 1922 C.Y.
SHG. 35 %

STA. 192+69 - 193+13 = 44 LIN. FT.
EXCEPTION TO NET CENTERLINE LENGTH (BRIDGE)

STA. 192+91.0
1-40' SPAN REIN. CONC. DECK GIRDER BRIDGE
TO REMAIN. 190 FT. ROADWAY