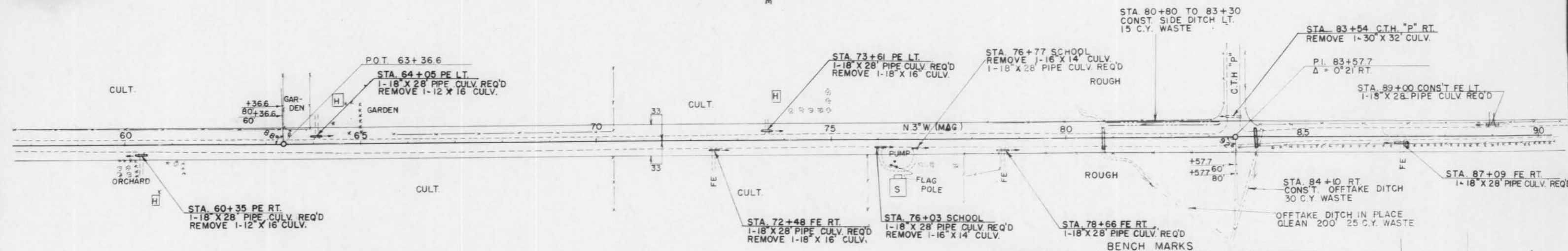




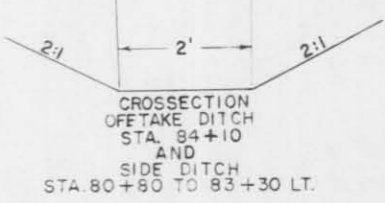
DATE 9-51  
DES MGF  
PLAN  
REVISED  
PLOTTED  
CHECKED  
BY W.A. CHAND  
NO. 8357



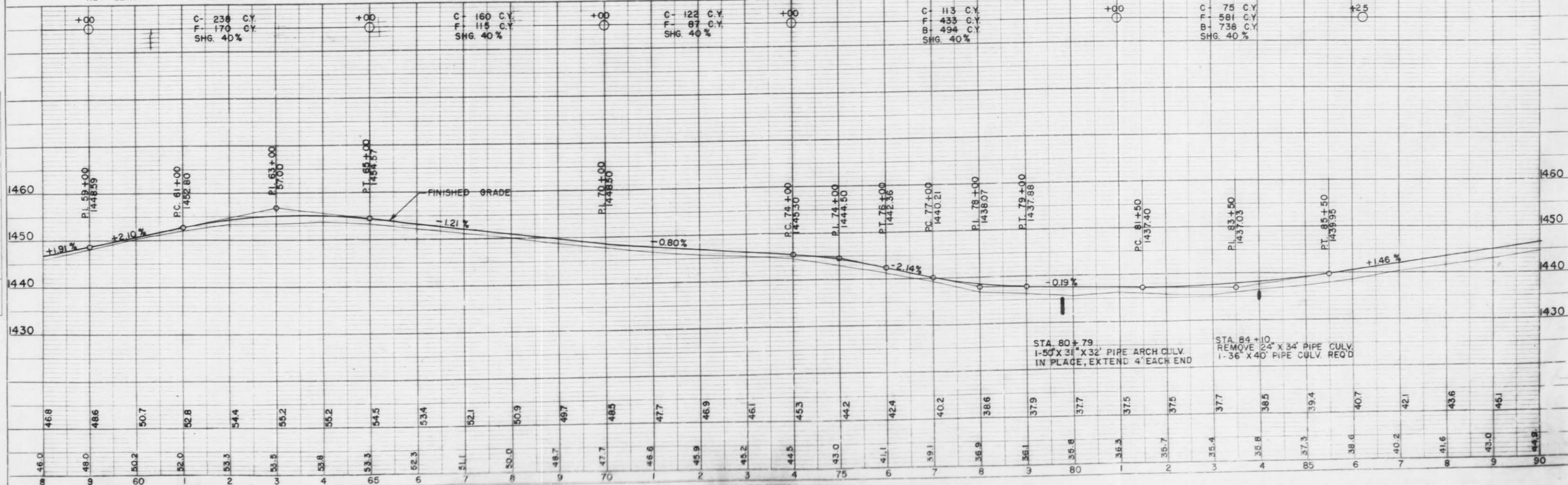
POWER LINE ON EAST SIDE OF ROAD  
100' OUT STA. 61+00 TO 146+00

BENCH MARKS

NO.	STATION	DESCRIPTION	ELEV.
9	60+70	SPIKE IN 24" STUMP	60' RT. 1453.46
10	76+45	N.W. COR. DOORSILL OF SCHOOL	85' RT. 1443.71
11	85+50	SPIKE IN 24" ELM	120' RT. 1448.40



NET LENGTH OF CENTERLINE STA. 60+00 TO STA. 90+00 = 3000'



DATE 9-51  
DES RVP  
PROFILE  
REVISED  
PLOTTED  
CHECKED  
BY W.A. CHAND  
NO. 8358

STA. 80+79  
1-50" X 31" X 32" PIPE ARCH CULV.  
IN PLACE, EXTEND 4' EACH END

STA. 84+10  
REMOVE 24" X 34" PIPE CULV.  
1-36" X 40" PIPE CULV. REQ'D