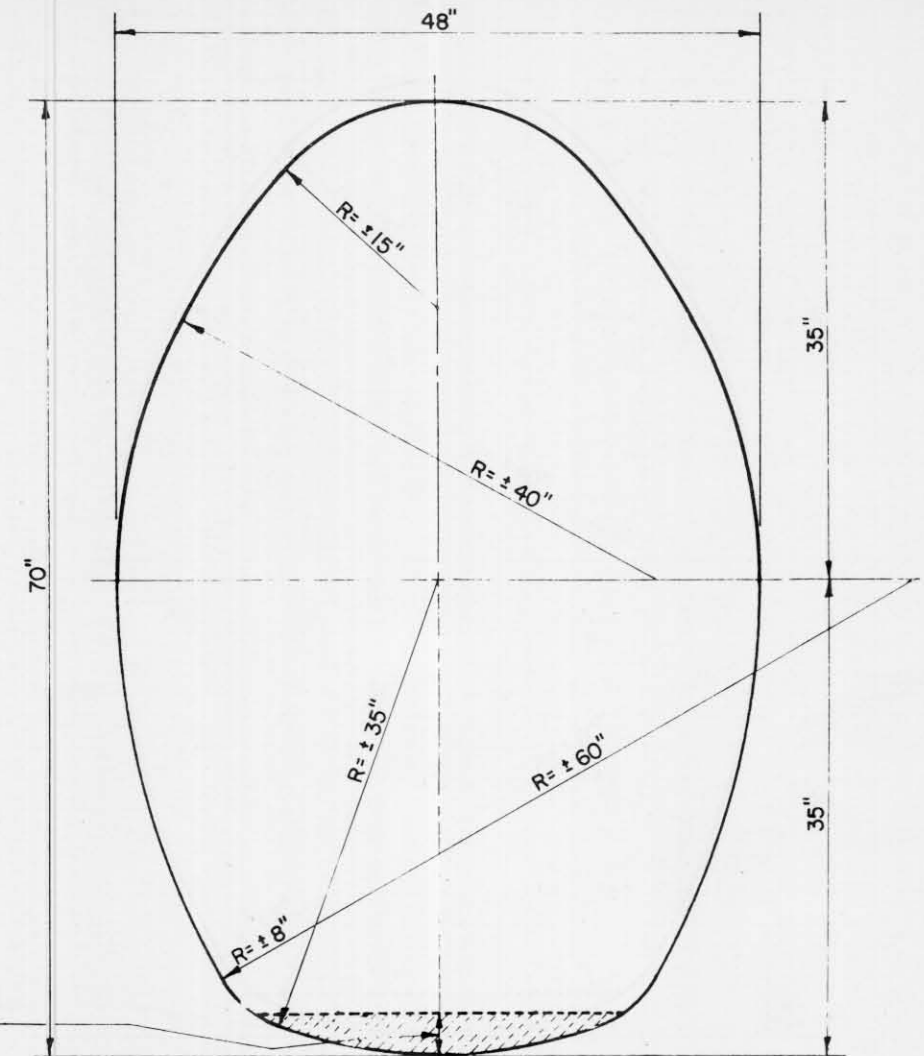


**CORRUGATED GALVANIZED SHEET METAL
PIPE ARCH**
(RIVETED)

GAUGE	S SPAN (IN.)	H HEIGHT (IN.)	AREA (SQ. FT.)	R (IN.)	T (IN.)	B (IN.)	A (IN.)
16	18	11	1.1	4	6½	4½	10
16	22	13	1.6	4	8¼	4¾	14
14	29	18	2.8	4½	12½	5½	20
14	36	22	4.4	5	15¾	6¼	26
12	43	27	6.4	5½	20	7	32
12	50	31	8.7	6	23	8	38
12	58	36	11.4	7	26¾	9¼	44
12	65	40	14.3	8	29½	10½	49
10	72	44	17.6	9	32¼	11¼	54

NOTE: ALL DIMENSIONS MEASURED FROM INSIDE
CRESTS OF CORRUGATIONS.

3" BITUMINOUS SURFACING
DENSE GRADED TYPE
SC, MC, RC OR RT BITUMINOUS
MATERIALS.



**CORRUGATED GALVANIZED SHEET METAL
PIPE CATTLE PASS**
NO. 10 GAUGE

CONSTRUCTION NOTE

DETAILS OF CONSTRUCTION NOT SHOWN SHALL CONFORM TO
THE PERTINENT REQUIREMENTS OF THE STANDARD SPECIFICATIONS
AND THE APPLICABLE SPECIAL PROVISIONS.

TOLERANCE FROM THE DIMENSIONS DETAILING SIZE AND
SHAPE WILL BE PERMISSIBLE PROVIDING EQUIVALENT CAPACITY
AND STRENGTH ARE OBTAINED.

**CORRUGATED GALVANIZED
SHEET METAL
PIPE ARCH & CATTLE PASS**

STATE HIGHWAY COMMISSION OF WISCONSIN

RECOMMENDED FOR APPROVAL

PLAN ENGINEER

C. J. Blue 8/30/49
CONSTRUCTION ENGINEER

APPROVED:

DRAWN L.J.D.
CHECKED

E. W. Rostky 9/30/49
STATE HIGHWAY ENGINEER