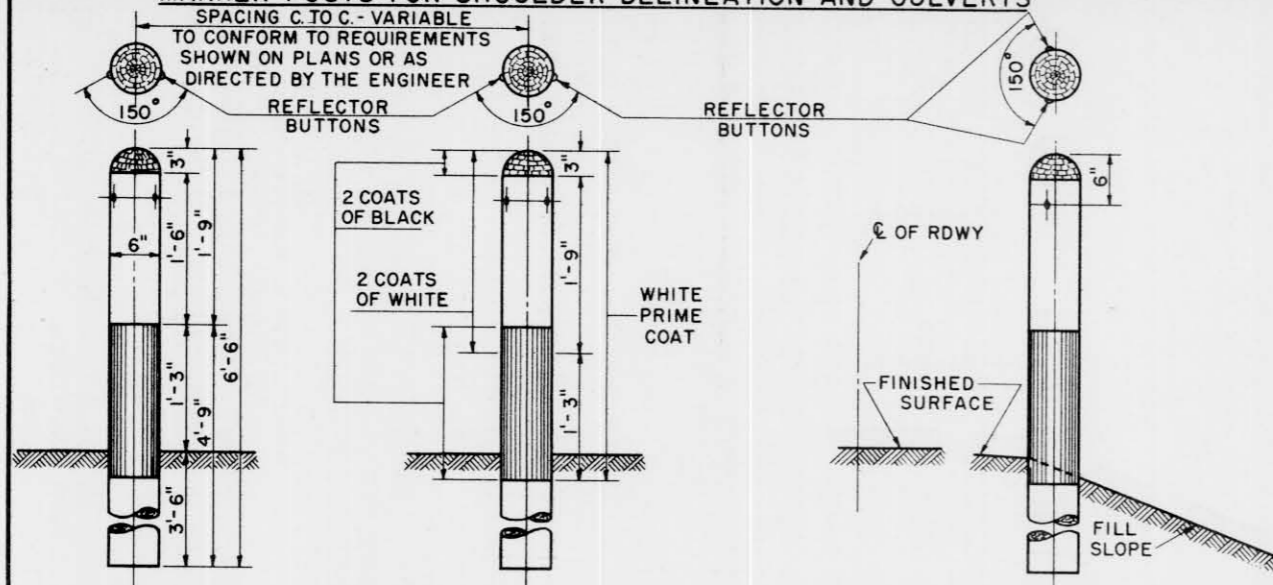


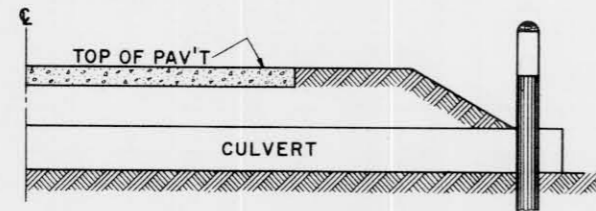
MARKER POSTS FOR SHOULDER DELINEATION AND CULVERTS



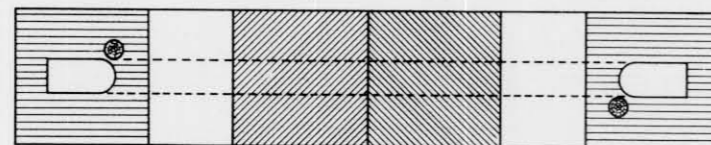
ELEVATION SHOWING SPACING

SPACING OF MARKER POSTS FOR VARYING LENGTHS OF SHOULDER TO BE PROTECTED
 100 FT. TO 500 FT. ----- 50 FT.
 500 FT. OR MORE ----- 100 FT.
 SEE MISCELLANEOUS QUANTITY SHEET OF PLANS

ELEVATION SHOWING LOCATION ON ROAD SHOULDER



SECTION WITH CULVERT MARKER



PLAN SKETCH

CONSTRUCTION NOTES

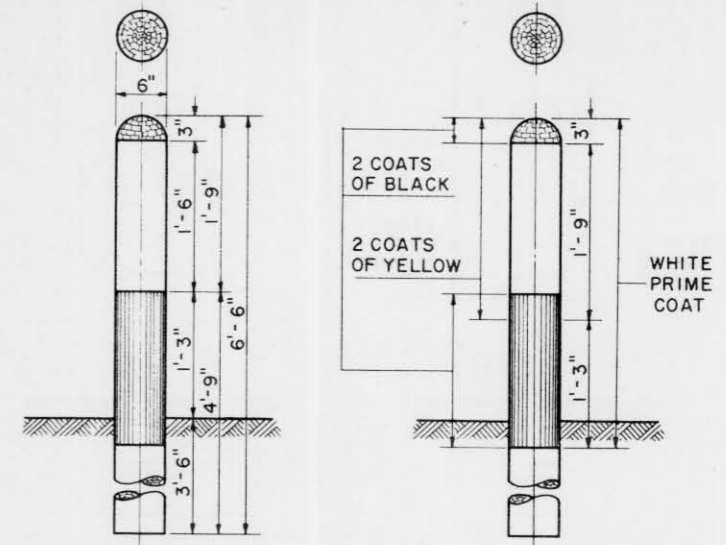
REFLECTOR BUTTONS SHALL BE SIZE NO. 1 CRYSTAL, COMPLETE WITH CLIP FOR WOOD MOUNTING. DRILL MOUNTING HOLE TO FIT BUTTON (GENERALLY 1/8 DIAMETER).

MARKER POST AS CULVERT MARKER TO BE PLACED AT BOTH ENDS OF CULVERT ON NEAR SIDE OF CULVERT. NO REFLECTOR BUTTON REQUIRED.

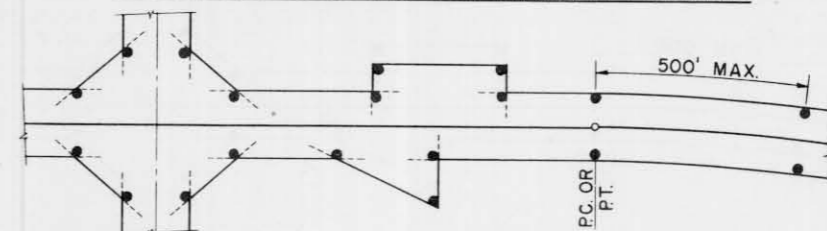
GENERAL NOTES

DETAILS FOR THIS ITEM SHALL CONFORM TO THE PERTINENT REQUIREMENTS OF THE STANDARD SPECIFICATIONS AND THE APPLICABLE SPECIAL PROVISIONS.

MARKER POSTS FOR RIGHT OF WAY



ELEVATION SHOWING SETTING AND PAINTING



TYPICAL PLAN SHOWING LAYOUT OF POSTS

CONSTRUCTION NOTES

RIGHT OF WAY MARKER POSTS SHALL BE ERECTED IN ADVANCE OF GRADING OPERATIONS.
 POSTS MAY BE SHAPED AND PAINTED PRIOR TO SETTING. ANY DAMAGE TO PAINT SURFACE DURING ERECTION MUST BE TOUCHED UP BEFORE ACCEPTANCE.
 THE POSTS SHALL BE PLACED AT THE OUTER LIMITS OF THE HIGHWAY BUT ENTIRELY WITHIN THE R/W, AND SHALL BE SO PLACED THAT THE OUTER

EDGE OF THE POST WILL BE TANGENT TO THE R/W LINE OR LINES EXTENDED.
 THE EXACT LOCATION SHALL BE STAKED IN THE FIELD BY THE ENGINEER.

MARKER POSTS

STATE HIGHWAY COMMISSION OF WISCONSIN

RECOMMENDED FOR APPROVAL:

DATE 4/17/52 *As Blue*
 CONSTRUCTION ENGINEER

APPROVED:

DATE 4/17/52 *E. G. Rostig*
 STATE HIGHWAY ENGINEER

DRAWN LJD
 CHECKED