

FED. ROAD DIST. NO.	STATE	SEC. AID PROJ. NO.	SHEET NO.	TOTAL SHEETS
4	WIS.	431A	4	37

DIVISION JOB NO. 7104

WIDTH OF RIGHT OFWAY = 70' EXCEPT WHERE OTHERWISE SHOWN

STA 0+46 - 12 SPAN 24' ROADWAY CONCRETE SLAB BRIDGE GOOD CONDITION TO BE LEFT IN PLACE

(RAD. = 20711)
 PI = 61608
 P = 24.431 L
 D = 2450
 L = 12732
 SUPERELEVATION = 1/4" PER FT.
 NO WIDENING

20" Iron Pipe RR. CULV. # 177

G.M. & S.P. RR

CULTIVATED SANDY SOIL

STA. 29+20 - 24x24-62 CONG. CULV. REQD

VILLAGE OF GILBERT

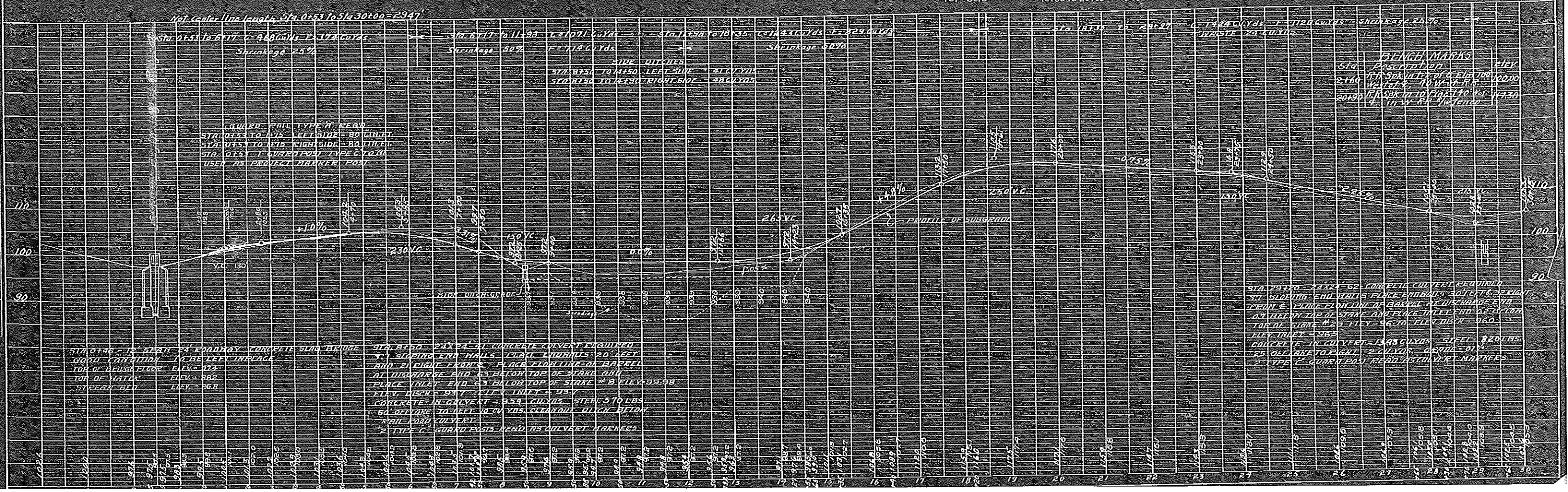
STA 9+85 - 16x28" COR. IRON PIPE IN PLACE REMOVES
 STA 8+50 - 24x24-41 CONCRETE CULVERT REQUIRED
 60' OFFTAKE DITCH REQD CLEAN OUT DITCH BELOW RR. CULV.

SUMMARY OF MISCELLANEOUS QUANTITIES THIS SHEET

ITEMS	STA. TO STA.	AMT.	UNIT	TOTALS
CLEARING	7+00 - 17+50	0.682	ACRE	
"	17+50 - 27+00	0.101	"	0.783
GRUBBING	7+00 - 17+50	0.263	"	
"	18+50 - 28+50	0.157	"	0.420
GUARD RAIL TYPE A	0+53 - 1175 L.S. 80		LINE FT.	
"	0+53 - 1175 R.S. 80		"	160.
GUARD POSTS " C	8+50	2	POSTS	
"	29+20	2	"	4
GUARD POST TYPE C	0+53 PROJECT MARKER	1	POST	
TOP SOIL	10+00 TO 25+00	563	CU. YDS	563

RECEIVED BY LINCOLN COUNTY SURVEYOR THIS 27TH DAY OF September 20 1929
 Tony Bellomo
 COUNTY SURVEYOR

Not Center Line length Sta. 0+53 to Sta. 30+00 = 2947'



BENCHMARKS

Sta	Description	Elev
2160	6" DIA SPERMITE DIA 1100	100.00
20190	6" DIA SPERMITE DIA 1100	117.30

STA 0+46 - 12 SPAN 24' ROADWAY CONCRETE SLAB BRIDGE GOOD CONDITION TO BE LEFT IN PLACE
 TOP OF DECK ELEV. = 97.4
 TOP OF WATER ELEV. = 88.2
 SURFACE BED ELEV. = 86.8

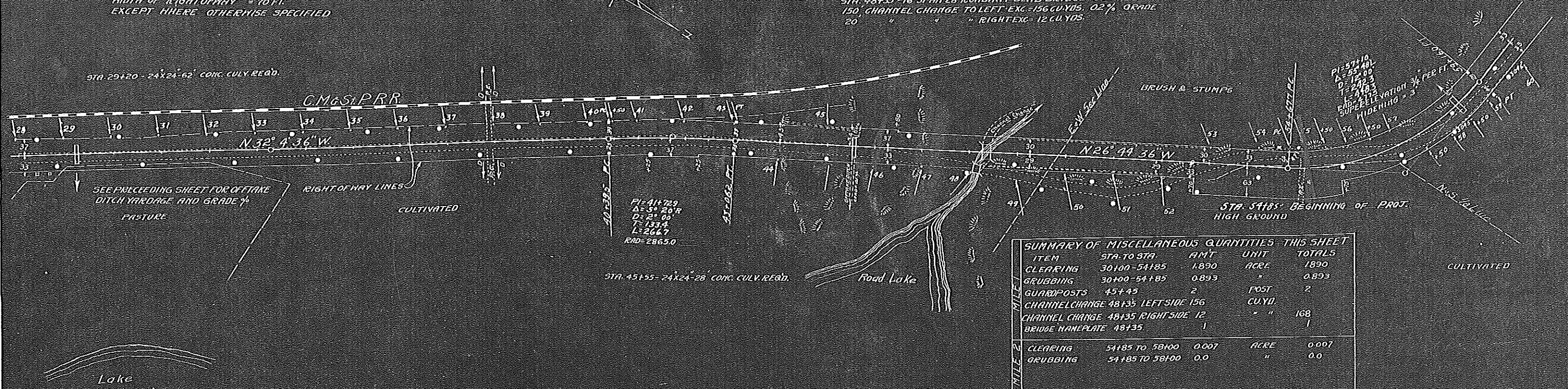
STA 8+50 - 24x24-41 CONCRETE CULVERT REQUIRED
 31' SLOPING END WALLS PLACE ENDWALLS 30 FEET FROM E. PLUMB FLOORLINE OF BARREL AT DISCHARGE END 63' BELOW TOP OF STAKE #80
 PLACE INLET END 63' BELOW TOP OF STAKE #8 ELEV. 99.98
 ELEV. INLET = 99.7 ELEV. INLET = 99.7
 CONCRETE IN CULVERT = 359 CU. YDS STEEL 570 LBS
 60' OFFTAKE TO LEFT OF CULVERT CLEANOUT DITCH BELOW RR. CULVERT
 2 TYPE C GUARD POSTS REQD AS CULVERT MARKERS

STA 29+20 - 24x24-62 CONCRETE CULVERT REQUIRED
 31' SLOPING END WALLS PLACE ENDWALLS 30 FEET FROM E. PLUMB FLOORLINE OF BARREL AT DISCHARGE END 63' BELOW TOP OF STAKE #29 ELEV. 96.10
 ELEV. INLET = 96.3
 CONCRETE IN CULVERT = 1343 CU. YDS STEEL 920 LBS
 25' OFFTAKE TO RIGHT OF CULVERT. 2 TYPE C GUARD POST MARKERS

WIDTH OF RIGHT OF WAY = 70 FT. EXCEPT WHERE OTHERWISE SPECIFIED

STA 48+35 REMOVE 16' CONC. SLAB SPAN BRIDGE IN PLACE
 STA. 48+35 - 16' SPAN 28' ROADWAY SLAB BRIDGE REQ'D
 150' CHANNEL CHANGE TO LEFT EXC. = 156 CU. YDS. 0.2% GRADE
 20' " " " RIGHT EXC. = 12 CU. YDS.

STA. 58150-36X24-45 CONC. CULV. READ



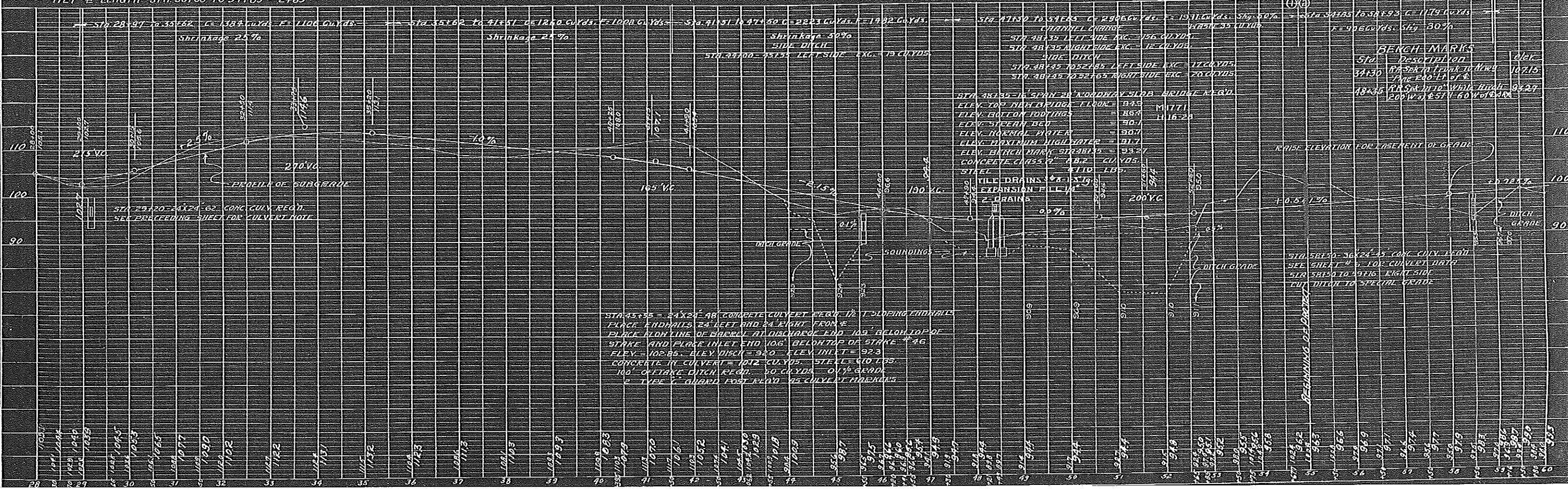
SUMMARY OF MISCELLANEOUS QUANTITIES THIS SHEET

ITEM	STA. TO STA.	AMT.	UNIT	TOTALS
CLEARING	30+00-54+85	1.890	ACRE	1.890
GRUBBING	30+00-54+85	0.893	"	0.893
GUARDPOSTS	45+45	2	POST	2
CHANNEL CHANGE	48+35 LEFT SIDE	156	CU. YD.	
CHANNEL CHANGE	48+35 RIGHT SIDE	12	"	168
BRIDGE NAMEPLATE	48+35	1	"	1

MILE	ITEM	STA. TO STA.	AMT.	UNIT	TOTALS
2	CLEARING	54+85 TO 58+00	0.007	ACRE	0.007
2	GRUBBING	54+85 TO 58+00	0.0	"	0.0

NET LENGTH STA 30+00 TO 54+85 = 2485'

MILE NET LENGTH STA 54+85 TO 58+00 = 315'

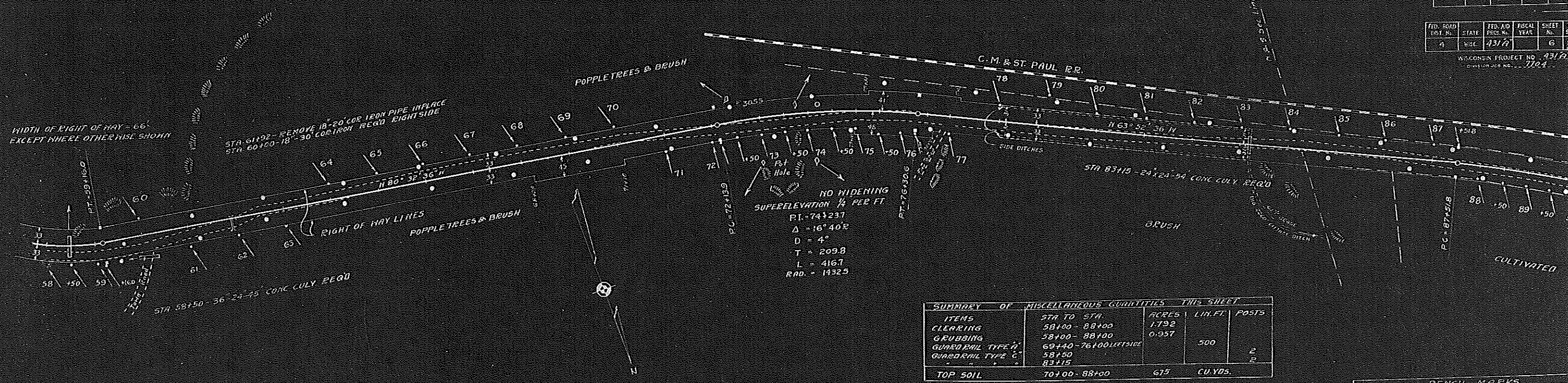


STA 45+35 = 24X24-48' CONCRETE CULVERT FROM 12' SLOPING END WALLS
 PLACE ENDWALLS 24' LEFT AND 24' RIGHT FROM S
 PLACK ALONG LINE OF BARREL AT DISCHARGE END 109' BELOW TOP OF
 STAKE AND PLACE INLET END 106' BELOW TOP OF STAKE # 46
 ELEV. = 102.85. DLEV. DISCH. = 92.0. ELEV. INLET = 92.3
 CONCRETE IN CULVERT = 1032 CU. YDS. STEEL = 910 LBS.
 100' OFFTAKE DITCH REQ'D. 50' CU. YDS. 0.1% GRADE
 2' TYPE 'C' GUARD POST FROM 45' CULVERT ENDWALLS

BENCH MARKS
 510 Description Elev.
 34+30 RR S&N TIE IN TO HWY 102.15
 18+35 RR S&N TIE IN TO HWY 95.29
 200' W. 2.57' 60' W. 103.83

PLOTTED
 CHECKED
 DATE
 NO.

PLOTTED
 CHECKED
 DATE
 NO.

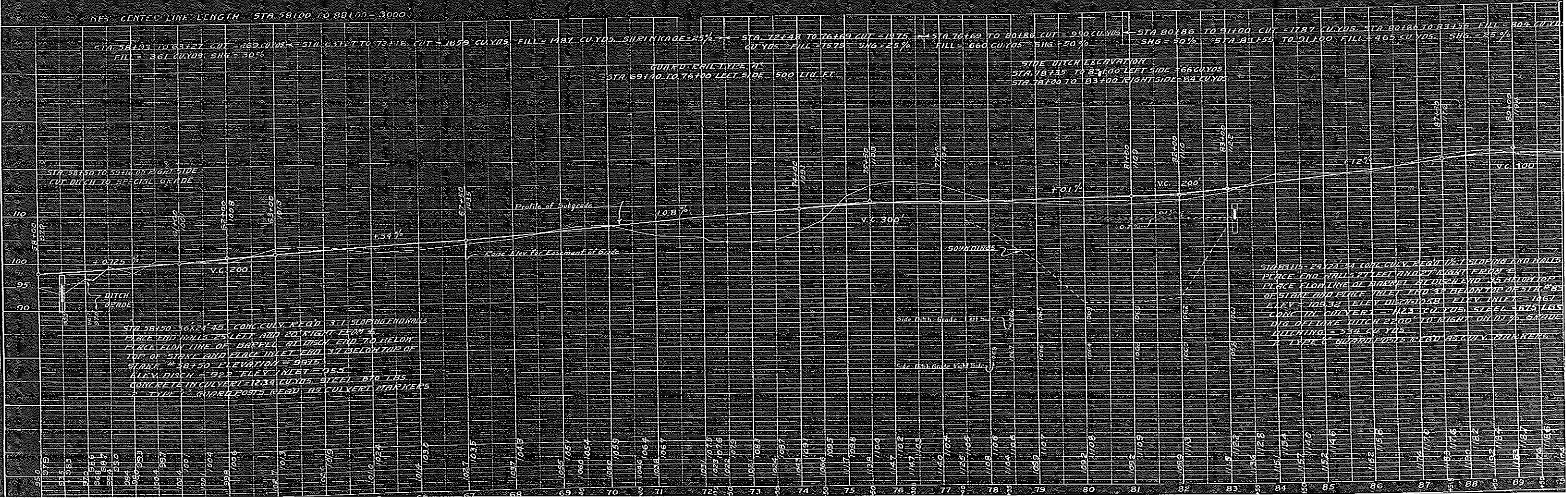


ITEMS	STA TO STA	ACRES	LIN. FT.	POSTS
CLEARING	58+00 - 88+00	1.792		
GRUBBING	58+00 - 88+00	0.957		
GUARD RAIL TYPE 'A'	69+40 - 76+00 LEFT SIDE		500	
GUARD RAIL TYPE 'C'	58+50 - 83+15			2
TOP SOIL	70+00 - 88+00	675	CU YDS.	

STATION	DESCRIPTION	ELEVATION
74+37	R.R. SPIKE IN 12\" N PINE	68 LEFT 105
85+	R.R. SPIKE IN 18\" N PINE	35 LEFT 116

PLAN
 CHECKED BY: [Signature]
 DATE: 5/25/26
 NOTED BY: [Signature]
 NO. 3869

PROFILE
 CHECKED BY: [Signature]
 DATE: 5/26/26
 NOTED BY: [Signature]
 NO. 3869

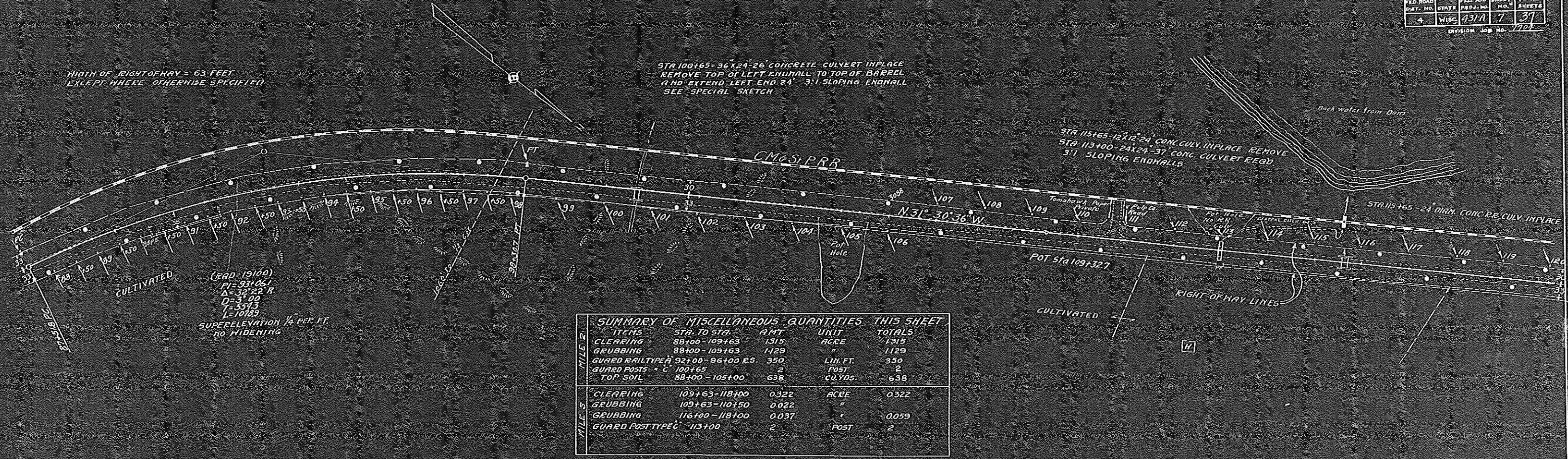


WIDTH OF RIGHT OF WAY = 63 FEET EXCEPT WHERE OTHERWISE SPECIFIED

STA 100+65 - 36" X 24" CONCRETE CULVERT IN PLACE REMOVE TOP OF LEFT ENDWALL TO TOP OF BARREL AND EXTEND LEFT END 24' 3:1 SLOPING ENDWALL SEE SPECIAL SKETCH

STA 115+65 - 12" X 24" CONG. CULV. IN PLACE REMOVE STA 113+00 - 24" X 24" - 37" CONG. CULVERT REQ'D 3:1 SLOPING ENDWALLS

STA 115+65 - 24" DIAM. CONG. P.C. CULV. IN PLACE

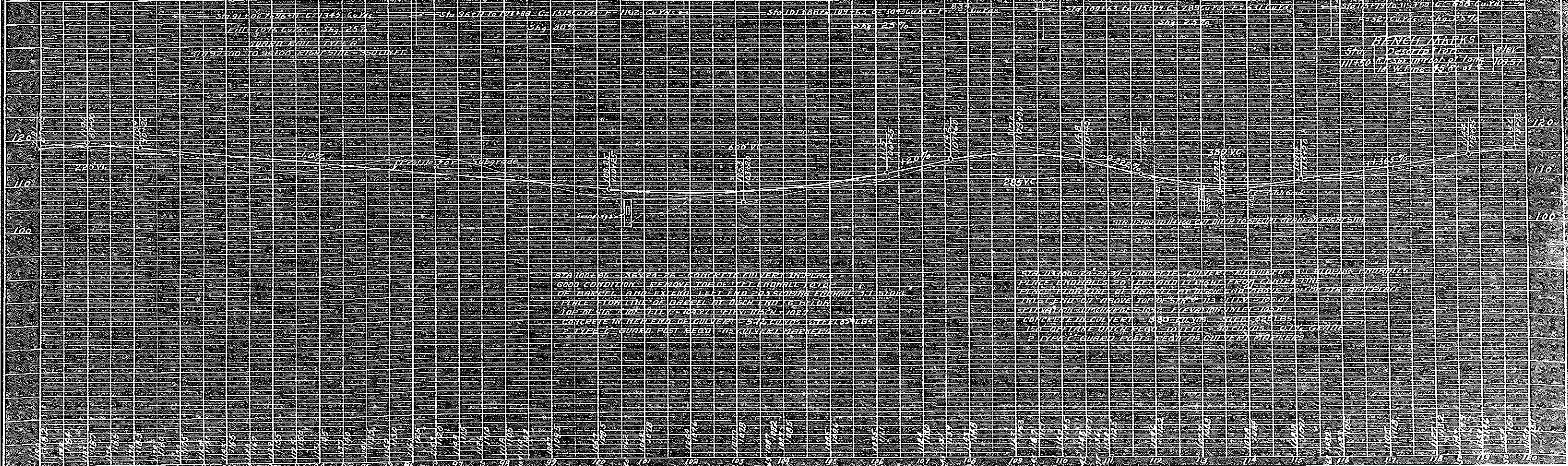


(LEAD - 13100)
 PI = 93+06.1
 Δ = 32° 22' R
 D = 31.02
 T = 337.3
 L = 1018.3
 SUPERELEVATION 1/4 PER FT.
 NO. WIDERING

ITEMS	STA. TO STA.	AMT	UNIT	TOTALS
CLEARING	88+00 - 109+63	1.315	ACRE	1.315
GRUBBING	88+00 - 109+63	1.129	"	1.129
GUARD RAIL TYPE A	92+00 - 96+00 E.S.	350	LIN. FT.	350
GUARD POSTS - C	100+65	2	POST	2
TOP SOIL	88+00 - 105+00	638	CU. YDS.	638
CLEARING	109+63 - 118+00	0.322	ACRE	0.322
GRUBBING	109+63 - 110+50	0.022	"	0.022
GRUBBING	116+00 - 118+00	0.037	"	0.037
GUARD POST TYPE C	113+00	2	POST	2

NET CENTER LINE LENGTH STA. 88+00 TO 109+63 = 2163'

NET CENTER LINE LENGTH STA. 109+63 TO 118+00 = 837'



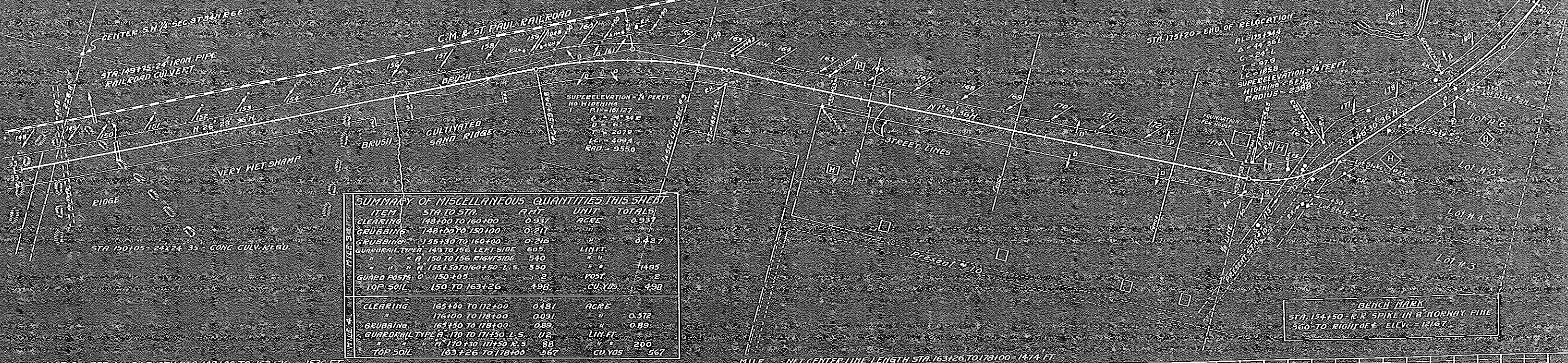
BENCH MARKS
 Sta. Description Elev.
 111+50 P.C. 5th in line of logs 109.57
 110+00 W.P. in line of logs 109.57

STA 100+65 - 36" X 24" CONCRETE CULVERT IN PLACE GOOD CONDITION REMOVE TOP OF LEFT ENDWALL TO TOP OF BARREL AND EXTEND LEFT END 24' 3:1 SLOPING ENDWALL PLACE LONG LINE OF BARREL AT 20' AND 16' BELOW TOP OF STR. 101+65 ELEV. 108.27' ELEV. 105.87' CONCRETE IN HEAD END OF CULVERT - 542 CU. YDS. STEEL 320 LBS. 2 TYPE C GUARD POST BEARS AS CULVERT MARKERS

STA 113+00 - 12" X 24" CONCRETE CULVERT REMOVED IN SLOPING ENDWALLS PLACE ENDWALLS 20' LEFT AND 17' RIGHT FROM CENTERLINE PLACE LONG LINE OF BARREL AT 20' END ABOVE TOP OF STR. AND PLACE LONG LINE OF BARREL ABOVE TOP OF STR. ELEV. 105.07' ELEVATION MISC. 105.22' ELEVATION MISC. 105.87' CONCRETE IN CULVERT - 380 CU. YDS. STEEL 320 LBS. 150 DIAM. DITCH REQ'D 10' DEEP - 30 CU. YDS. 2 TYPE C GUARD POSTS BEARS AS CULVERT MARKERS

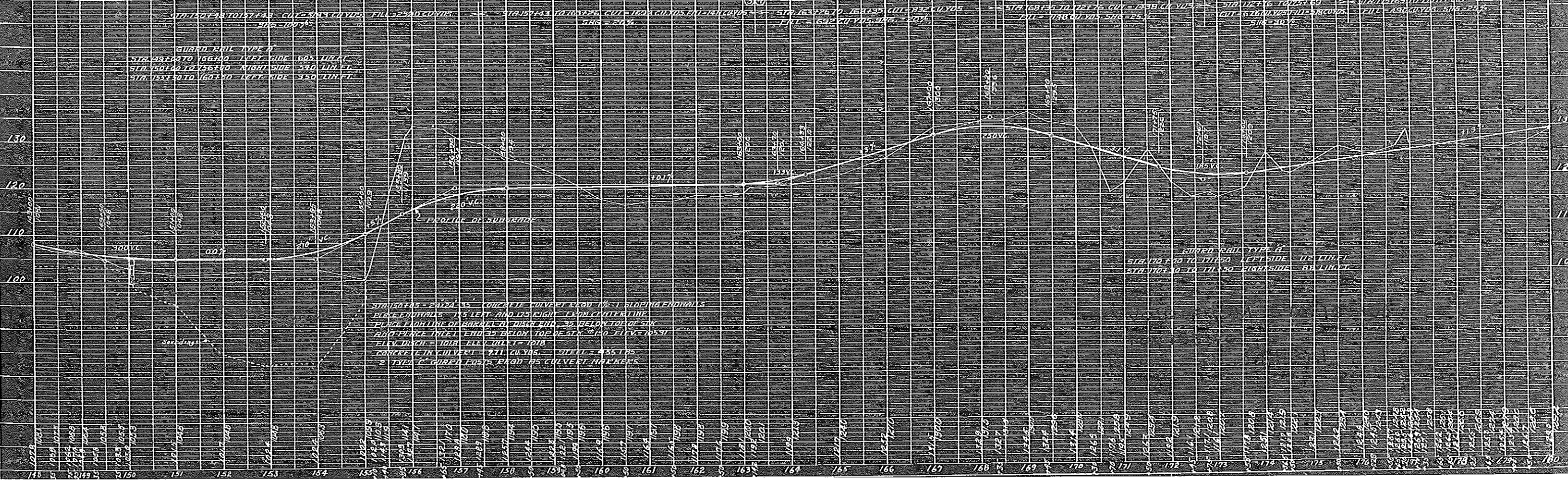
CITY OF TOMAHAWK

HIDTH OF RIGHT OF WAY = 66 FT. EXCEPT WHERE OTHERWISE SPECIFIED



SUMMARY OF MISCELLANEOUS QUANTITIES THIS SHEET				
ITEM	STA. TO STA.	AMT.	UNIT	TOTALS
CLEARING	148+00 TO 160+00	0.937	ACRE	0.937
GRUBBING	148+00 TO 150+00	0.211	"	"
GRUBBING	155+30 TO 160+00	0.216	"	0.427
GUARDRAIL TYPE A	149 TO 156 LEFT SIDE	605	LINE FT.	"
"	" 150 TO 156 RIGHT SIDE	540	"	"
"	" 155+30 TO 160+00 L.S.	350	"	1495
GUARD POSTS C	150+05	2	POST	2
TOP SOIL	150 TO 163+26	498	CU. YDS.	498
<hr/>				
CLEARING	163+00 TO 178+00	0.481	ACRE	"
"	176+00 TO 178+00	0.091	"	0.572
GRUBBING	163+50 TO 178+00	0.89	"	0.89
GUARDRAIL TYPE A	170 TO 171+50 L.S.	112	LINE FT.	"
"	" 170+30 TO 171+50 R.S.	88	"	200
TOP SOIL	163+26 TO 178+00	567	CU. YDS.	567

NET CENTER LINE LENGTH STA. 148+00 TO 163+26 = 1526 FT. MILE NET CENTER LINE LENGTH STA. 163+26 TO 178+00 = 1474 FT.



10-3272
 10-3273
 10-3274
 10-3275
 10-3276
 10-3277
 10-3278
 10-3279
 10-3280
 10-3281
 10-3282
 10-3283
 10-3284
 10-3285
 10-3286
 10-3287
 10-3288
 10-3289
 10-3290
 10-3291
 10-3292
 10-3293
 10-3294
 10-3295
 10-3296
 10-3297
 10-3298
 10-3299
 10-3300

STA 167+45 = 24x24-35 CONCRETE CULVERT FROM 1/2-1 SLOPING GRADUALS
 PIPE ENDS 15' LEFT AND 12' RIGHT FROM CENTERLINE
 EDGE EACH LINE OF BARREL AT DISCH. END 3" BELOW TOP OF 5"K
 RAIL FLANGE (HILL) ENDS 3" BELOW TOP OF 5"K
 ELEV. DISCH. = 101.8 ELEV. INLET = 101.8
 CONCRETE IN CULVERT = 771 CU. YDS. STEEL = 435 LBS.
 2 TYPE C GUARD POSTS EACH AS CULVERT MARKERS

GUARDRAIL TYPE A
 STA 170+00 TO 171+50 LEFT SIDE 112 LINE FT.
 STA 170+30 TO 171+50 RIGHT SIDE 88 LINE FT.

SKETCH
Showing
PROPOSED CHANGE OF GRADE & ALIGNMENT
on the
MERRILL-WOODRUFF ROAD

FEDERAL AID PROJECT NO. 431A
LINCOLN COUNTY
WISCONSIN HIGHWAY COMMISSION
MADISON WISCONSIN

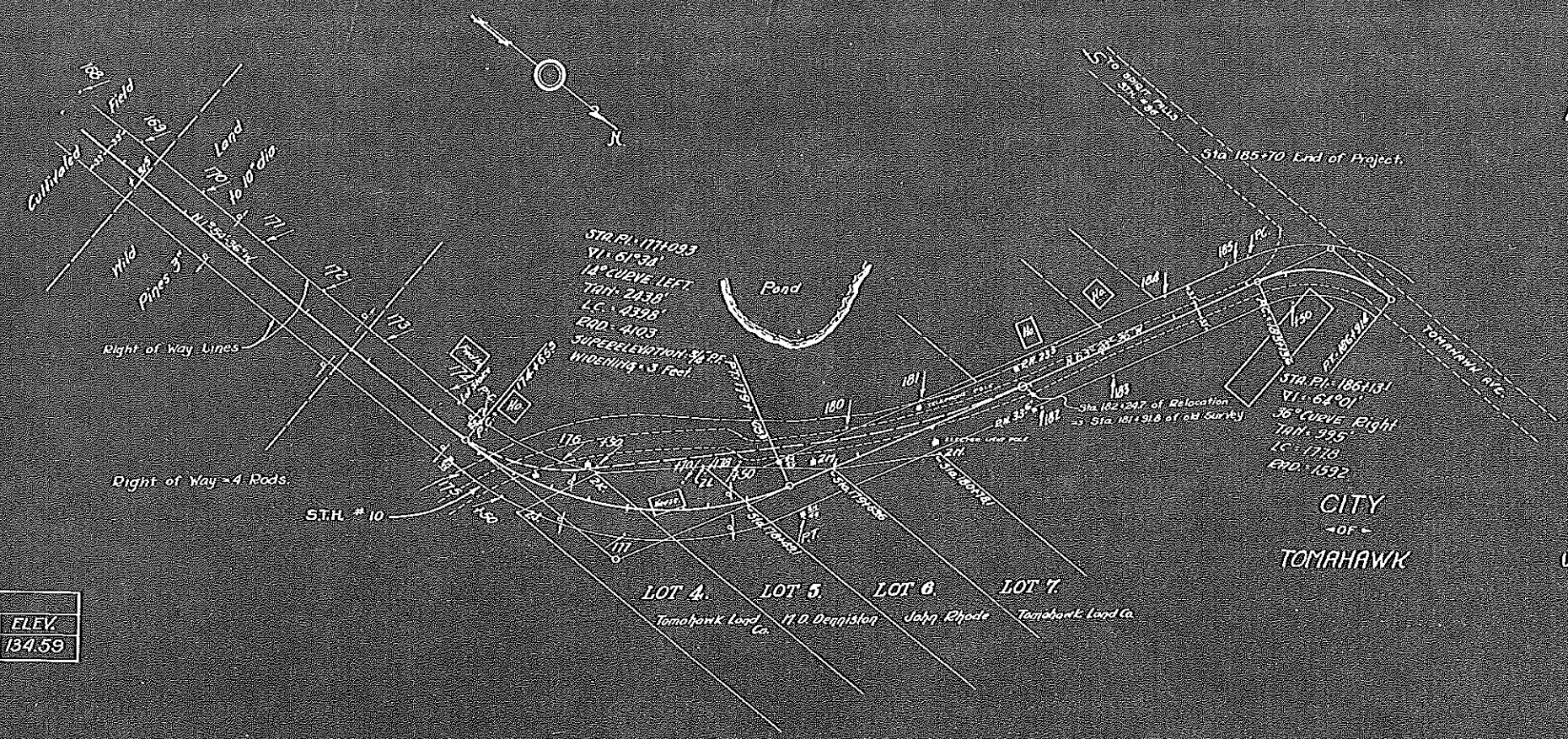
CORRECT: *H. M. Sargent*
DIVISION ENGINEER
RECOMMENDED FOR APPROVAL: *Chas. Seymour*
DESIGN ENGINEER
APPROVED: *J. D. Donahay*
5/19/26
STATE HIGHWAY ENGINEER

U.S. DEPT. OF AGRICULTURE-BUREAU OF PUBLIC ROADS

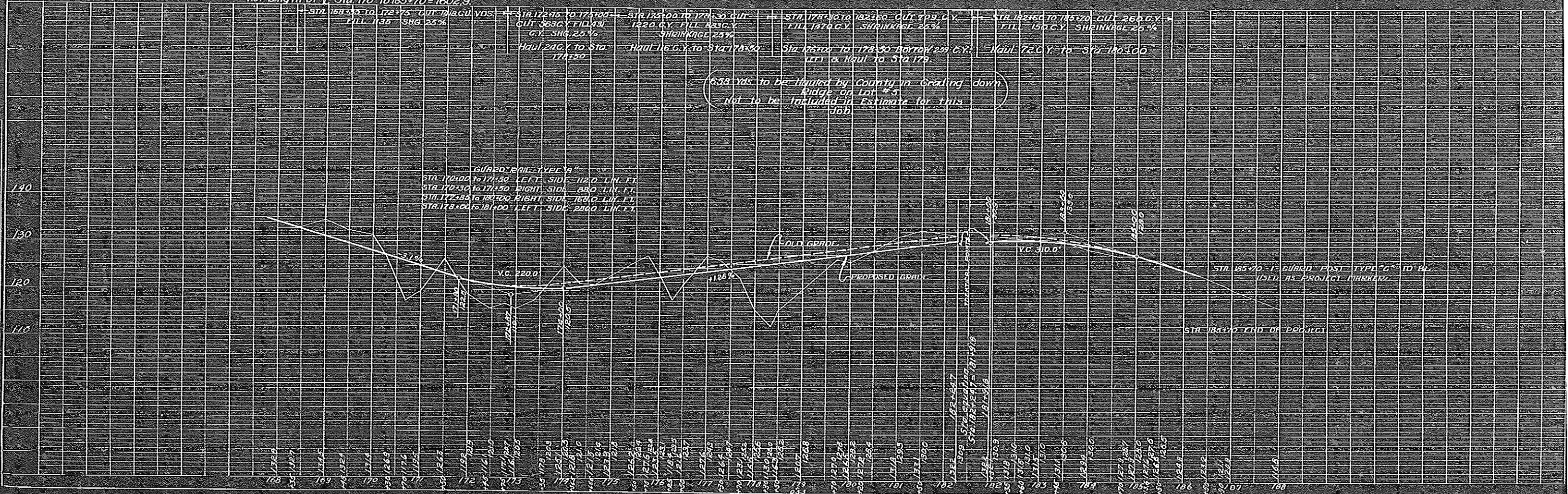
APPROVED: _____
DISTRICT ENGINEER

PLAN
DIRECTOR
PLANNING
NOTE: BOOK ALIGNMENT CHECKED
NO. 59922
BY: G. C. MILLER

BENCH MARKS		
STA.	DESCRIPTION	ELEV.
181+10	R.W. STAKE IN TYPING OFF OF ROADWAY PINE 40' RIGHT OF C.	134.59

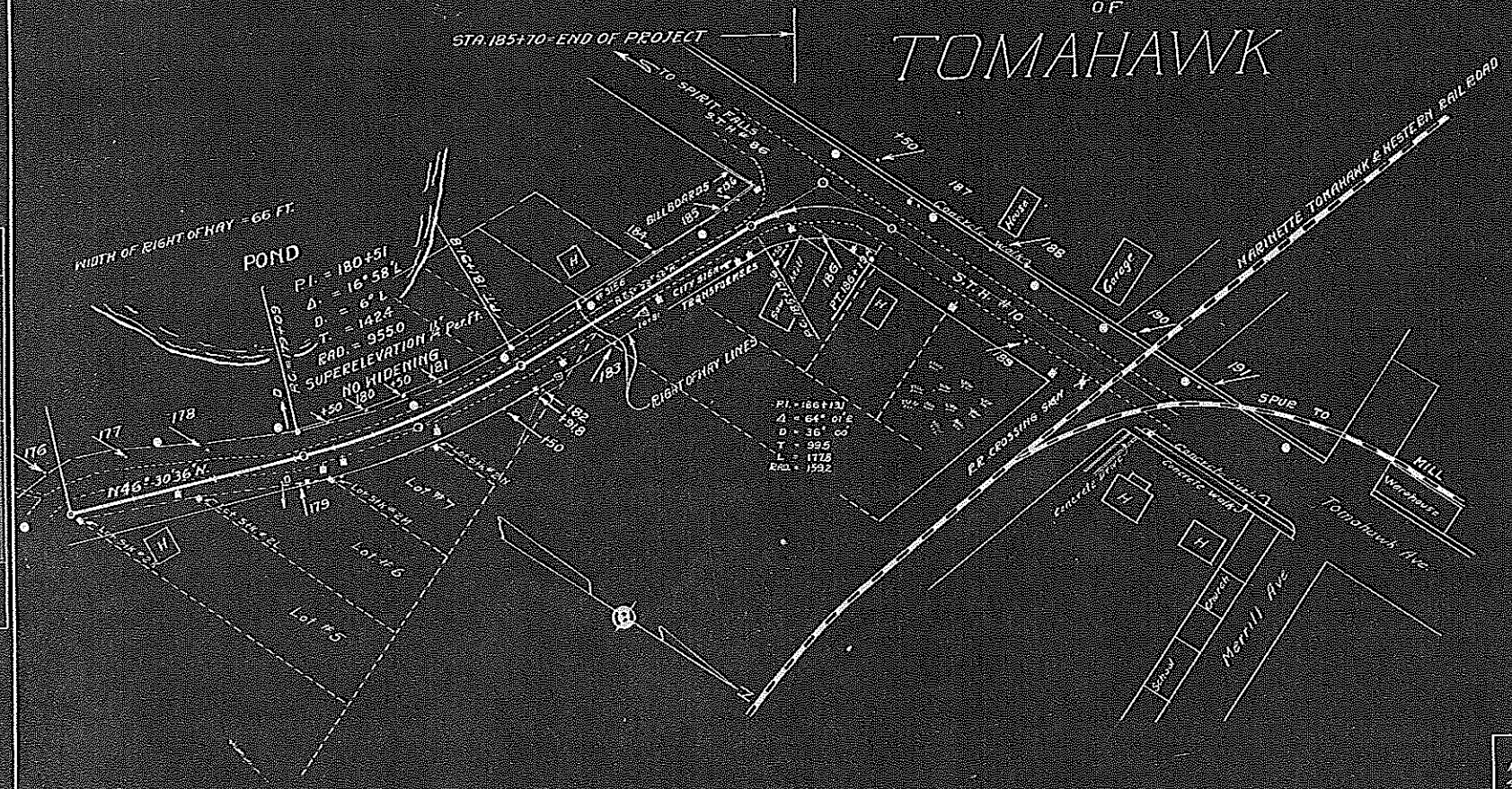


Net Length of Sta 170 to 185+70 = 1602.9



PROFILE
DIRECTOR
PLANNING
NOTE: BOOK CHECKED
NO. 59922
BY: G. C. MILLER

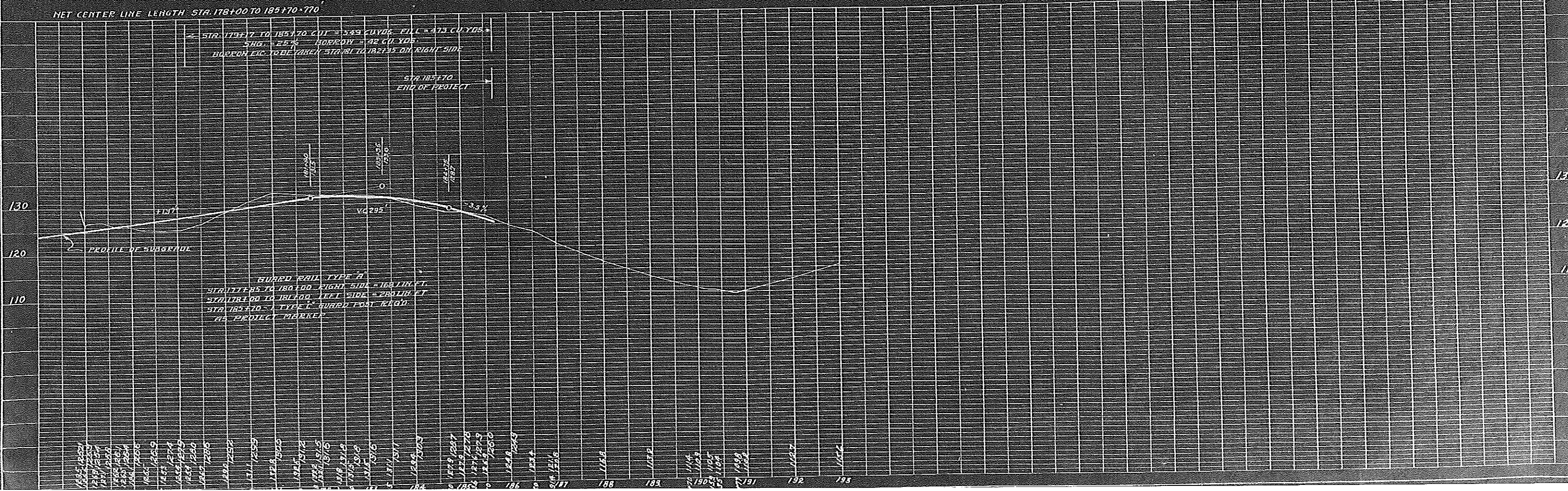
CITY OF TOMAHAWK



SUMMARY OF MISCELLANEOUS QUANTITIES THIS SHEET

ITEM	STA. TO STA.	AMT.	UNIT	TOTAL
GUARD RAIL TYPE A	177+85 TO 180+00 R.S.	168	LIN. FT.	
GUARD RAIL TYPE A	178+00 TO 181+00 L.S.	280	LIN. FT.	448
GUARD POST "C"	185+70	1	POST	1
TOP SOIL	178+00 TO 185+70	289	CU. YD.	289

BENCH MARK
RAILROAD SPIKE IN 8" NORWAY PINE
40 FT. RIGHT OF C. STA. 181+10 ELEV. = 134.59



NOTE: SEE SHEET 431-A-11 FOR PLAN VIEW OF THIS TRACK
 NOTE: SEE SHEET 431-A-10 FOR PLAN VIEW OF THIS TRACK
 NOTE: SEE SHEET 431-A-9 FOR PLAN VIEW OF THIS TRACK
 NOTE: SEE SHEET 431-A-8 FOR PLAN VIEW OF THIS TRACK
 NOTE: SEE SHEET 431-A-7 FOR PLAN VIEW OF THIS TRACK
 NOTE: SEE SHEET 431-A-6 FOR PLAN VIEW OF THIS TRACK
 NOTE: SEE SHEET 431-A-5 FOR PLAN VIEW OF THIS TRACK
 NOTE: SEE SHEET 431-A-4 FOR PLAN VIEW OF THIS TRACK
 NOTE: SEE SHEET 431-A-3 FOR PLAN VIEW OF THIS TRACK
 NOTE: SEE SHEET 431-A-2 FOR PLAN VIEW OF THIS TRACK
 NOTE: SEE SHEET 431-A-1 FOR PLAN VIEW OF THIS TRACK

DRAWN BY: SHEPPARD & COMPANY
 CHECKED BY: SHEPPARD & COMPANY
 DATE: 1925