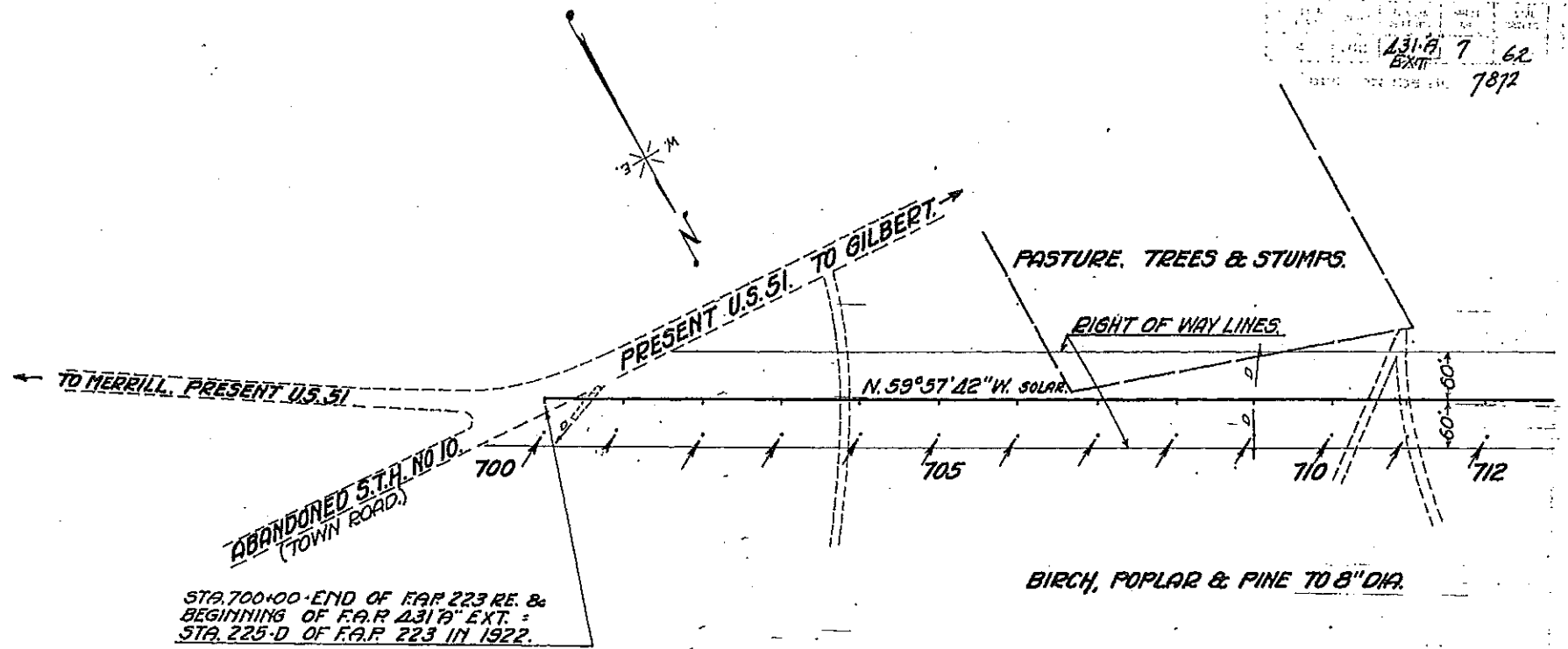


1931-1932
As-Blt.



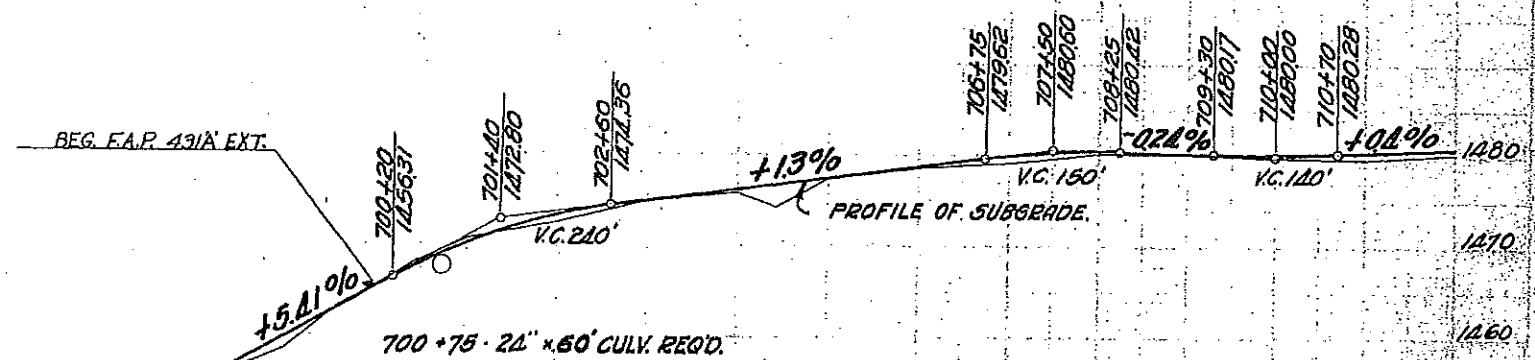
STA. 700+00 - END OF F.A.P. 223 RE. &
BEGINNING OF F.A.P. 431A EXT. =
STA. 225-D OF F.A.P. 223 IN 1922.

BIRCH, POPLAR & PINE TO 8" DIA.

BENCH MARKS.		
STATION.	DESCRIPTION.	ELEVATION.
699+90	RAIL SPIKE IN 6" PINE 50' RT.	266.22
710+00	" " " 8" BIRCH 60' "	281.88

NET \bar{C} LENGTH, STA. 700 TO STA. 712 = 12000'

700 \bar{C} . 508 F. 250 5.30% \bar{C} . 1170 F. 1131 3.30%
HAUL 183 TO F.A.P. 223. C.S.E. 15 C.Y.



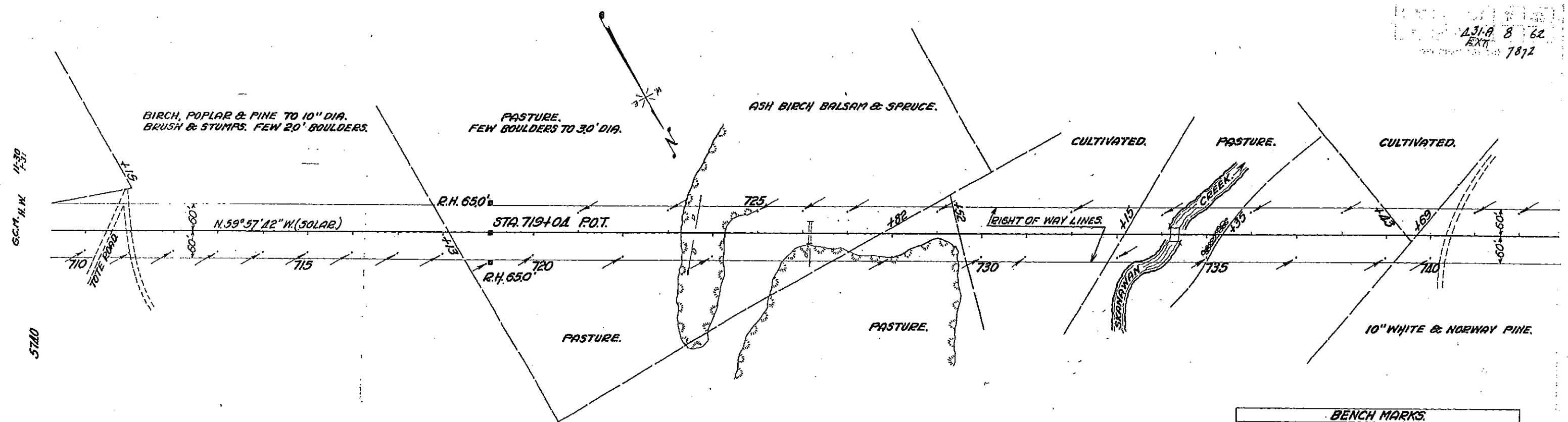
RECEIVED BY LINCOLN COUNTY
SURVEYOR THIS 27TH DAY
OF September 20, 10
Tommy Dalk
COUNTY SURVEYOR

- 1254.4
- +25 1253
- +50 1254.5
- 1257
- +30 1261.1
- +60 1263.4
- 1265.6
- +45 1268.2
- 1270.2
- 1271.5
- 1272.3
- 1273
- 1274.9
- 1276.2
- 1277.5
- 1278.9
- 1279.9
- 1280.1
- 1280.3
- 1280.2
- 1280.7
- 1280.8
- 1280.9

G. P. Ferguson 10-3
 F. Boyce 1-31
 W. C. Smith 1-31
 G. W. Ferguson 2-30

5742

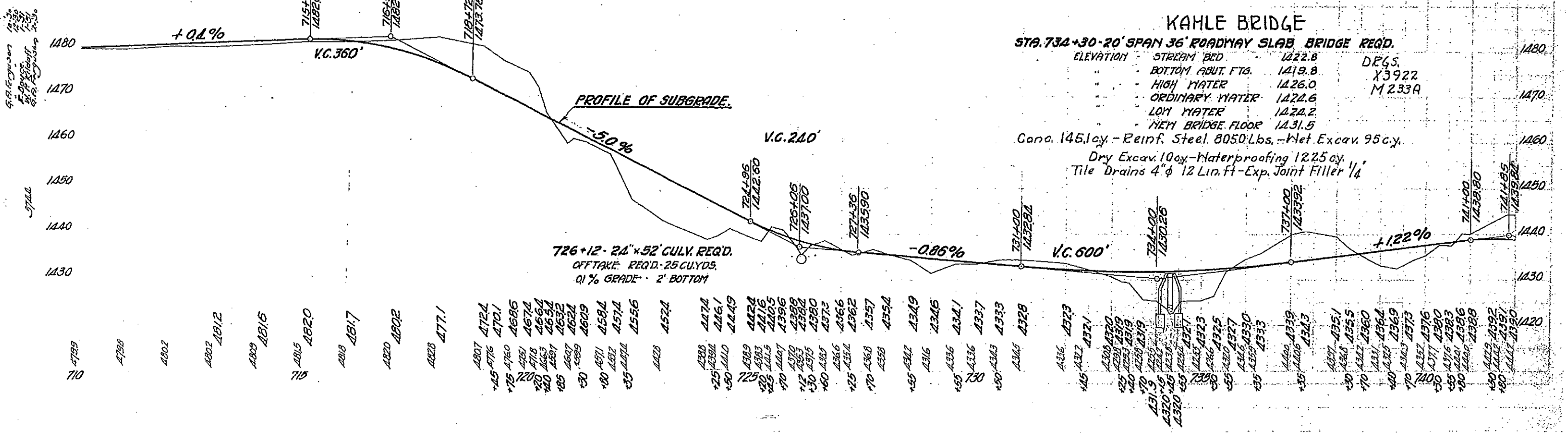
5744



BENCH MARKS		
STATION	DESCRIPTION	ELEVATION
718+25	RAIL SPIKE IN 2" PINE STRUCK	125.37
726+25	" " " 8" ASH 55' LEFT	120.26

NET LENGTH, STA 712+00 TO STA 742+00 = 3000'

716+37 C. 6108 F. 1929 S. 30% C.S.E. 74 C.Y.
 724+53 C. 693 F. 1063 BORROW 689 S. 30% C.S.E. 16 C.Y.
 728+90 C. 1238 F. 953 S. 30% C.S.E. 41 C.Y.
 733+76 C. 3218 F. 2475 S. 30% C.S.E. 49 C.Y.
 739+56 C. 392 F. 301 S. 30% C.S.E. 9 C.Y.



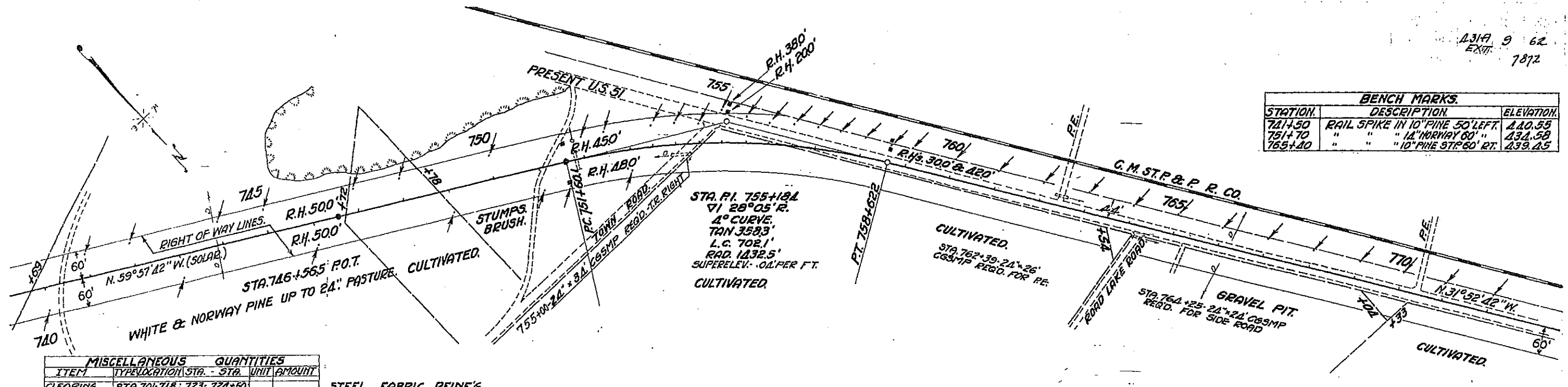
KAHLE BRIDGE
 STA. 734+30 - 20' SPAN 36' ROADWAY SLAB BRIDGE REQ'D.
 ELEVATION: STREAM BED 1222.8, BOTTOM ABUT. FTG. 1419.8, HIGH WATER 1226.0, ORDINARY WATER 1222.6, LOW WATER 1222.2, NEW BRIDGE FLOOR 1231.5
 DEGS. X3922, M233A
 Conc. 145.1cy - Reinf. Steel 8050 Lbs. - Net Excav. 95 cy.
 Dry Excav. 10 cy - Waterproofing 1225 cy.
 Tile Drains 4" φ 12 Lin. ft - Exp. Joint Filler 1/4"

S.P. Edgerton
10-20
10-21
10-22
10-23
10-24
10-25

STALL

2319 9 62
EXT. 7872

BENCH MARKS.		
STATION	DESCRIPTION	ELEVATION
721+50	RAIL SPIKE IN 10" PINE 50' LEFT	240.55
751+70	" " " 1A" NORWAY 60"	234.58
765+40	" " " 10" PINE STP 60' RT.	239.45



MISCELLANEOUS QUANTITIES				
ITEM	TYPE/LOCATION	STA. - STA.	UNIT	AMOUNT
CLEARING		STA. 701-718: 723-724+50		
		736-746: 748+78-751+22	ACR.	4.16
GRUBBING		STA. 701-718: 718-723: 723		
		724+50: 724+50-727+80:		
		736-746: 748+78-751+22	ACR.	5.98
CONC. HEADER	12" RIGHT	700+00	LINE	70
	LEFT			110

STEEL FABRIC REINF'G.
STA. 700+75- OVER CULVERT - 134 SA. YDS.
" 726+12 - " 134
" 734+30- BRIDGE APPR. 268

CROSS-OVERS
STA. 700+00

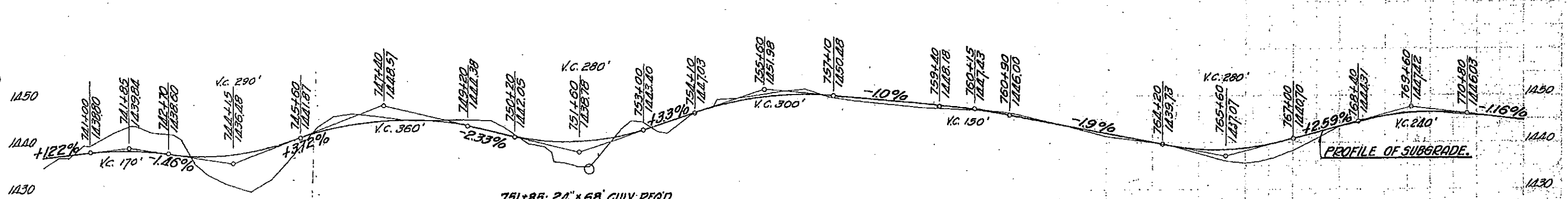
MILE
1 2

NET ϕ LENGTH STA. 742+00 TO 751+22 = 922.0'

NET ϕ LENGTH STA. 751+22 TO 772+0 = 2078.0'

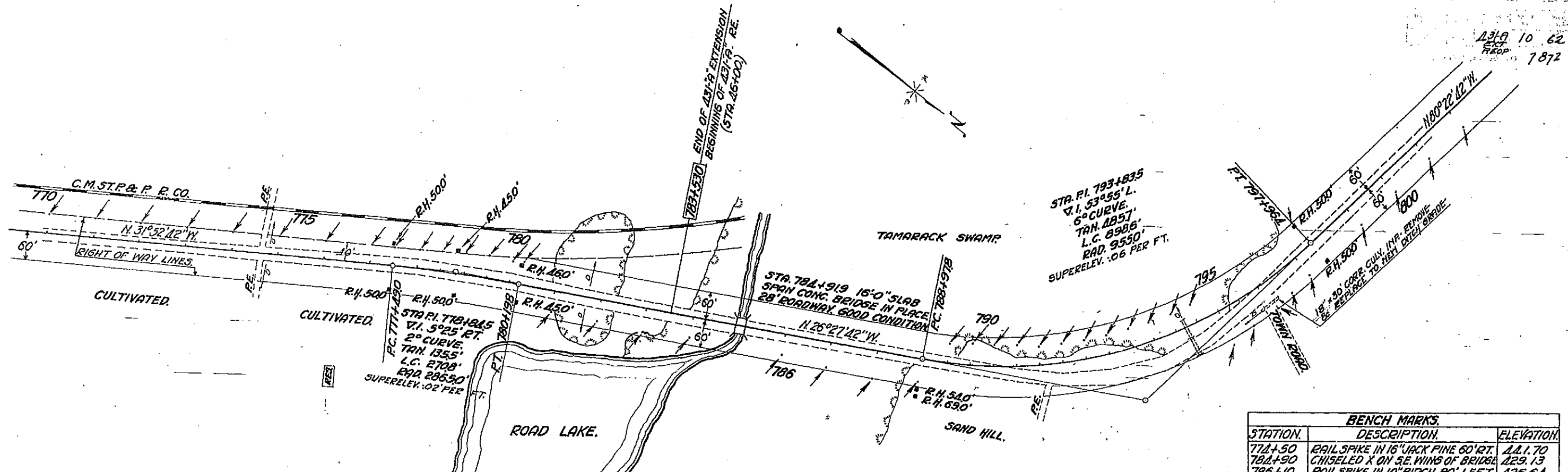
741+21 C. 2006 F. 1523 744+73 C. 1329 F. 1022 749+11 C. 437 751+22 C. 155A F. 119A S. 30% 756+87 C. 1616 F. 1241 S. 30% 766+05

S. 30% C.S.E. 38 C.Y. S. 30% C.S.E. 39 C.Y. S. 30% C.S.E. 13 C.Y. S. 30% C.S.E. 52 C.Y. S. 30% C.S.E. 48 C.Y.



- 740 437 4376
- 740 437 4380
- 740 437 4384
- 740 437 4388
- 740 437 4392
- 740 437 4396
- 740 437 4400
- 740 437 4404
- 740 437 4408
- 740 437 4412
- 740 437 4416
- 740 437 4420
- 740 437 4424
- 740 437 4428
- 740 437 4432
- 740 437 4436
- 740 437 4440
- 740 437 4444
- 740 437 4448
- 740 437 4452
- 740 437 4456
- 740 437 4460
- 740 437 4464
- 740 437 4468
- 740 437 4472
- 740 437 4476
- 740 437 4480
- 740 437 4484
- 740 437 4488
- 740 437 4492
- 740 437 4496
- 740 437 4500
- 740 437 4504
- 740 437 4508
- 740 437 4512
- 740 437 4516
- 740 437 4520
- 740 437 4524
- 740 437 4528
- 740 437 4532
- 740 437 4536
- 740 437 4540
- 740 437 4544
- 740 437 4548
- 740 437 4552
- 740 437 4556
- 740 437 4560
- 740 437 4564
- 740 437 4568
- 740 437 4572
- 740 437 4576
- 740 437 4580
- 740 437 4584
- 740 437 4588
- 740 437 4592
- 740 437 4596
- 740 437 4600
- 740 437 4604
- 740 437 4608
- 740 437 4612
- 740 437 4616
- 740 437 4620
- 740 437 4624
- 740 437 4628
- 740 437 4632
- 740 437 4636
- 740 437 4640
- 740 437 4644
- 740 437 4648
- 740 437 4652
- 740 437 4656
- 740 437 4660
- 740 437 4664
- 740 437 4668
- 740 437 4672
- 740 437 4676
- 740 437 4680
- 740 437 4684
- 740 437 4688
- 740 437 4692
- 740 437 4696
- 740 437 4700
- 740 437 4704
- 740 437 4708
- 740 437 4712
- 740 437 4716
- 740 437 4720
- 740 437 4724
- 740 437 4728
- 740 437 4732
- 740 437 4736
- 740 437 4740
- 740 437 4744
- 740 437 4748
- 740 437 4752
- 740 437 4756
- 740 437 4760
- 740 437 4764
- 740 437 4768
- 740 437 4772
- 740 437 4776
- 740 437 4780
- 740 437 4784
- 740 437 4788
- 740 437 4792
- 740 437 4796
- 740 437 4800
- 740 437 4804
- 740 437 4808
- 740 437 4812
- 740 437 4816
- 740 437 4820
- 740 437 4824
- 740 437 4828
- 740 437 4832
- 740 437 4836
- 740 437 4840
- 740 437 4844
- 740 437 4848
- 740 437 4852
- 740 437 4856
- 740 437 4860
- 740 437 4864
- 740 437 4868
- 740 437 4872
- 740 437 4876
- 740 437 4880
- 740 437 4884
- 740 437 4888
- 740 437 4892
- 740 437 4896
- 740 437 4900
- 740 437 4904
- 740 437 4908
- 740 437 4912
- 740 437 4916
- 740 437 4920
- 740 437 4924
- 740 437 4928
- 740 437 4932
- 740 437 4936
- 740 437 4940
- 740 437 4944
- 740 437 4948
- 740 437 4952
- 740 437 4956
- 740 437 4960
- 740 437 4964
- 740 437 4968
- 740 437 4972
- 740 437 4976
- 740 437 4980
- 740 437 4984
- 740 437 4988
- 740 437 4992
- 740 437 4996
- 740 437 5000

5.5 Miles
11-37
5740



BENCH MARKS		
STATION	DESCRIPTION	ELEVATION
774+50	RAIL SPIKE IN 16" JACK PINE 60' RT.	1221.70
784+90	CHISELED X ON SE. WING OF BRIDGE	1229.13
796+10	RAIL SPIKE IN 10" BIRCH 80' LEFT	1226.64

NET CENTER-LINE LENGTH STA. 772 TO 802 = 3000'

C. 2259 F. 1738 S. 3.30% C.S.E. 59 C.Y.

778+18 C. 974 F. 719 3.30% C.S.E. 22 C.Y.

781+56 C. 573 F. 311 3.200% BORROW 360 C.S.E. 16 C.Y.

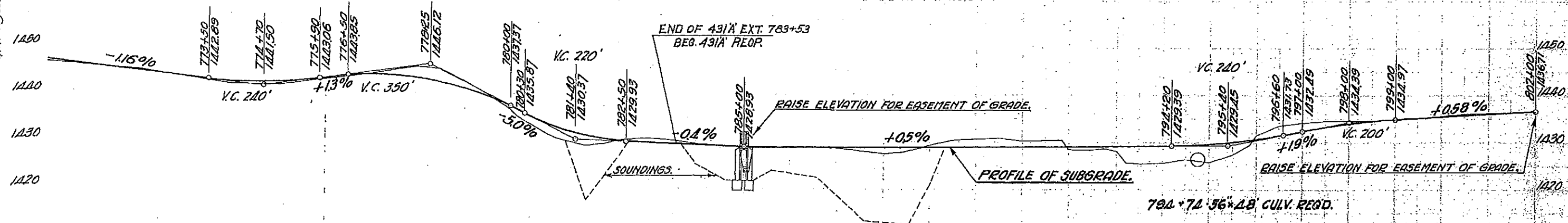
785+15 C. 829 F. 770 3.200% BORROW 1481 C.S.E. 48 C.Y.

791+80 C. 1044 F. 1805 3.30% BORROW 1303 C.S.E. 43 C.Y.

800+00

STA. 784+91.9 - 16' SPAN - 28' RDWY. SLAB BRIDGE IN PLACE
ELEVATION - TOP OF BRIDGE FLOOR - 1228.3

END OF 431'A EXT. 783+53
BEG. 431'A REOP.

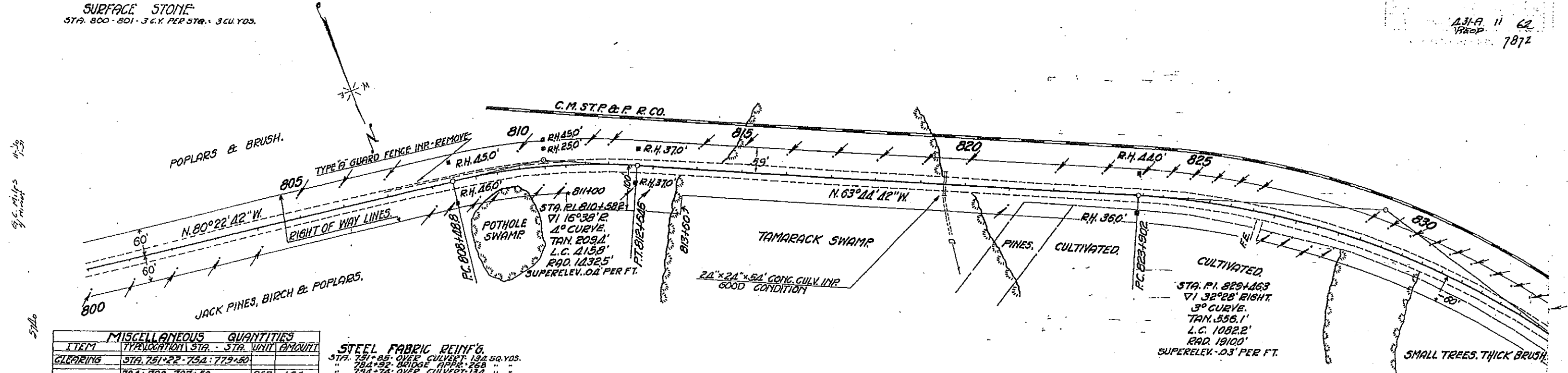


- 770 1216.2 1216.4
- +60 1216.3 1216.3
- 1217 1217
- 1218 1218
- 1219 1219
- 1220 1220
- 1221 1221
- 1222 1222
- 1223 1223
- 1224 1224
- 1225 1225
- 1226 1226
- 1227 1227
- 1228 1228
- 1229 1229
- 1230 1230
- 1231 1231
- 1232 1232
- 1233 1233
- 1234 1234
- 1235 1235
- 1236 1236
- 1237 1237
- 1238 1238
- 1239 1239
- 1240 1240
- 1241 1241
- 1242 1242
- 1243 1243
- 1244 1244
- 1245 1245
- 1246 1246
- 1247 1247
- 1248 1248
- 1249 1249
- 1250 1250

5.5 Miles
11-37
5740

SURFACE STONE
STA. 800 - 801 - 3 C.Y. PER STA. 3 CU. YDS.

A3-A 11 62
7872



MISCELLANEOUS QUANTITIES	
ITEM	TYPE LOCATION STA. - STA. UNIT AMOUNT
CLEARING	STA. 751+22 - 754+50
	784+790 - 797+50
GRUBBING	STA. 751+22 - 754+50
	784+790 - 797+50
CONG. HEADER	12" RIGHT 754+35
	LEFT 756+25

STEEL FABRIC REINF.
STA. 751+85 OVER CULVERT 132 SQ. YDS.
" 784+92 BRIDGE APPR. 268 " "
" 794+74 OVER CULVERT 132 " "

CROSS OVER
STA. 754+35

BENCH MARKS		
STATION	DESCRIPTION	ELEVATION
808+00	RAIL SPIKE IN 12" JACK PINE 80' LT.	1235.03
820+60	" " " " " 50' RT.	1244.03
832+00	" " " " " 20' "	1245.24

NET LENGTH STA. 802 TO 809 = 7000'

NET LENGTH STA. 809 TO 832 = 23000'

800 C. 684 F. 871 S. 30% BORROW 148 C.S.E. 0 C.Y.

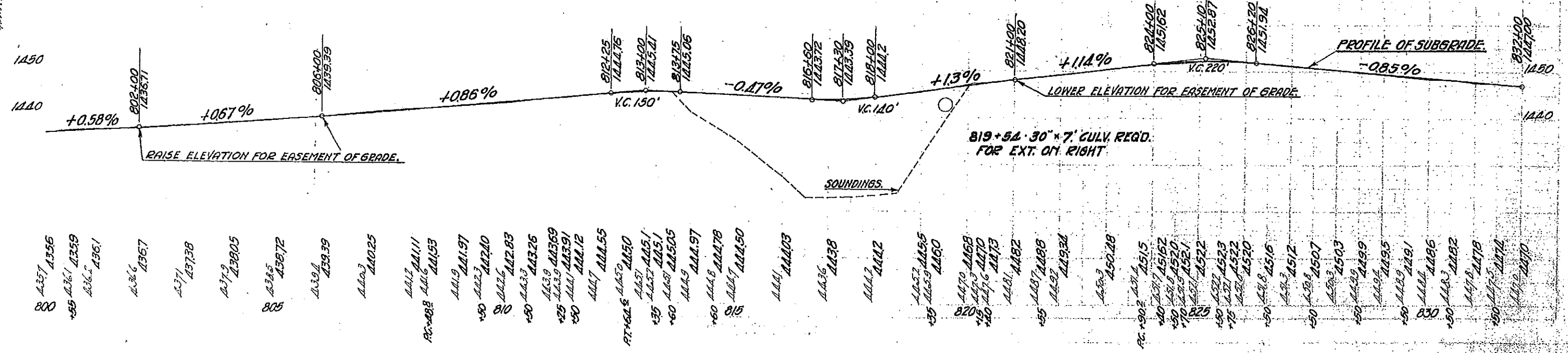
809 C. 7 F. 510 S. 30% BORROW 656 C.S.E. 0 C.Y.

811+25 C. 389 F. 929 S. 200% BORROW 2498 C.S.E. 0 C.Y.

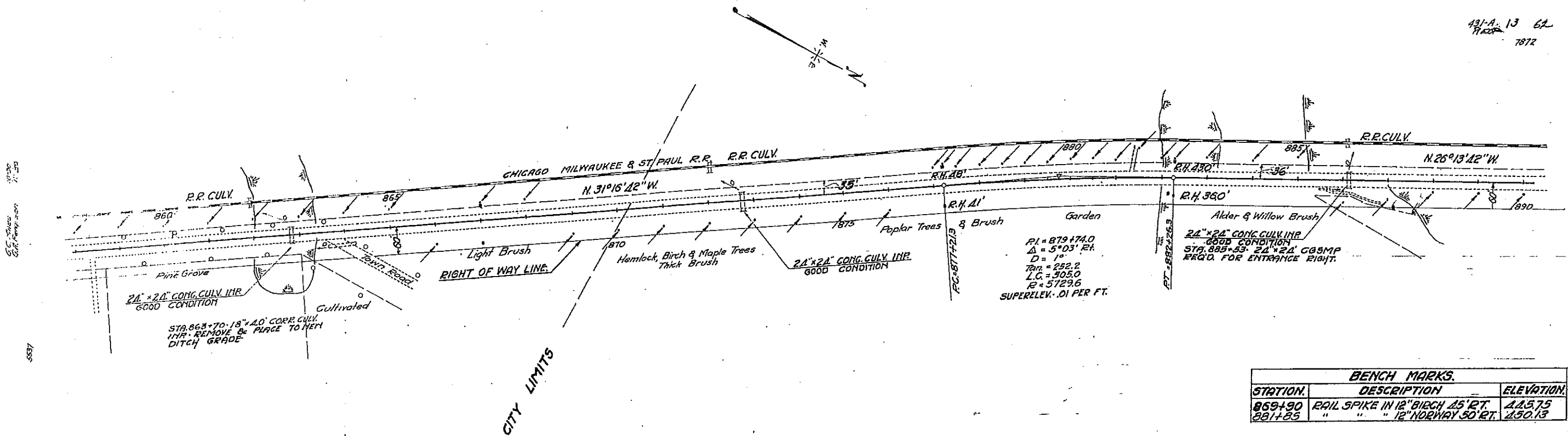
820 C. 279 F. 709 S. 30% BORROW 643 C.S.E. 0 C.Y.

828 C. 396 F. 629 S. 30% BORROW 122 C.S.E. 0 C.Y.

G.P. Ferguson 10-30
F. S. Ferguson 11-30
S. B. Ferguson 12-30



- 800 1437 1356
- 805 1436 1367
- 810 1437 1378
- 815 1439 1399
- 820 1441 1425
- 825 1442 1411
- 830 1443 1403
- 832 1444 1396
- 835 1445 1389
- 840 1446 1382
- 845 1447 1375
- 850 1448 1368
- 855 1449 1361
- 860 1450 1354
- 865 1451 1347
- 870 1452 1340
- 875 1453 1333
- 880 1454 1326
- 885 1455 1319
- 890 1456 1312
- 895 1457 1305
- 900 1458 1298
- 905 1459 1291
- 910 1460 1284
- 915 1461 1277
- 920 1462 1270
- 925 1463 1263
- 930 1464 1256
- 935 1465 1249
- 940 1466 1242
- 945 1467 1235
- 950 1468 1228
- 955 1469 1221
- 960 1470 1214
- 965 1471 1207
- 970 1472 1200
- 975 1473 1193
- 980 1474 1186
- 985 1475 1179
- 990 1476 1172
- 995 1477 1165
- 1000 1478 1158



BENCH MARKS.		
STATION.	DESCRIPTION	ELEVATION.
869+90	RAIL SPIKE IN 12" BIRCH 15' RT.	115.75
881+85	" " " 12" NORWAY 50' RT.	150.13

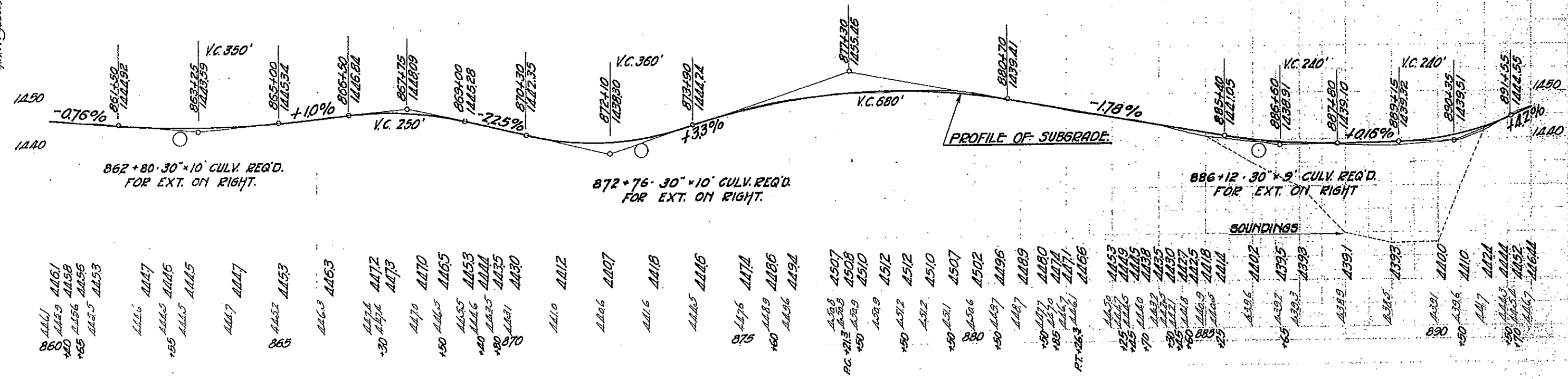
NET ϕ LENGTH, STA. 862 TO STA. 892 = 3000.'

862 C.299 F.174 3.30% BORROW 317 C.S.E. 0 C.Y. 869+40

C.744 F.570 3.30% C.S.E. 0 C.Y. 877+21

CUT 879 FILL 678 5.30% C.S.E. 6 C.Y. 885

C.170 F.1355 3.50% BORROW 1863 C.S.E. 18 C.Y.



END OF PROJECT - STA 921+75
 → to Spirit Falls S.T.H. 66
 ← to Spirit Falls S.T.H. 66

MISCELLANEOUS QUANTITIES - MILE 5				
ITEM	TYPE	LOCATION	STA. - STA.	UNIT AMOUNT
CLEARING		RIGHT	912 - 920	ACR. 0.60
GRUBBING		"	"	" 0.60
CONC. HEADER	12"	"	911 + 75	LN. FT. 60

CROSS-OVERS
 STA. 911 + 75

SURFACE STONE
 STA. 856 - 861 20 C.Y. PER STA.
 870 - 890 " " " " 20 " "
 906 - 910 " " " " 20 " "

CROSS-OVERS
 STA. 847 + 15

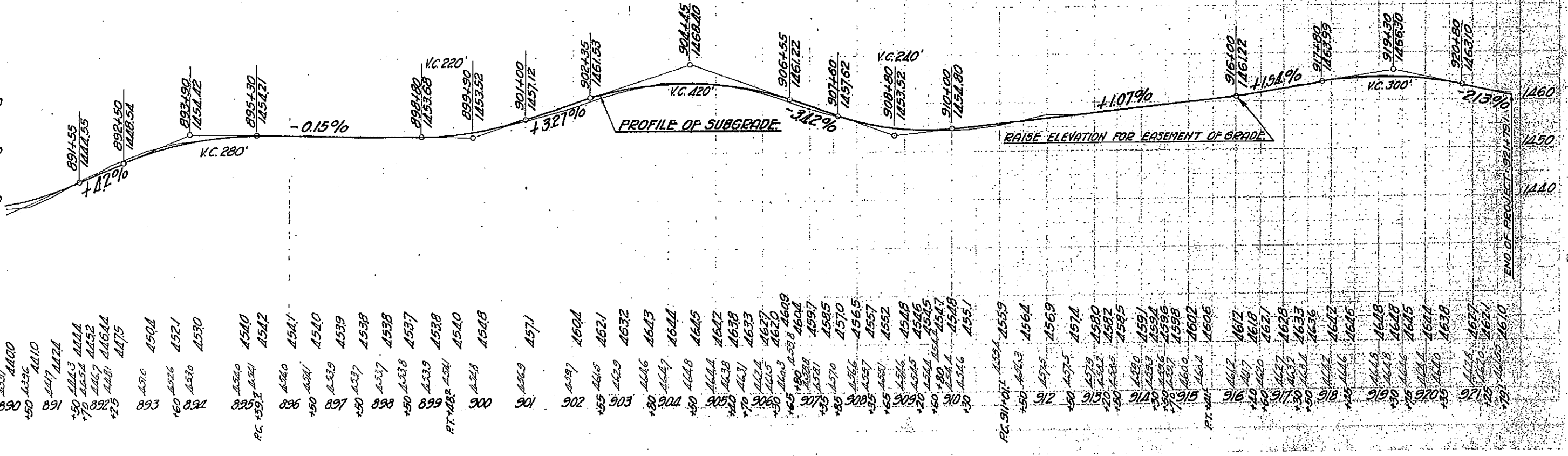
MISCELLANEOUS QUANTITIES				
ITEM	TYPE	LOCATION	STA. - STA.	UNIT AMOUNT
CLEARING		STA. 877-50-880-50	882-885	ACR. 0.25
GRUBBING		STA. 877-50-880-50	882-885	" 0.25
CONC. HEADER	12"	RIGHT	863 + 60	LN. FT. 80
GUARD FENCE	E	LEFT	893 - 899	" 600

STEEL FABRIC REINF'G
 STA. 862 + 80 - OVER CULVERT - 134 SQ. YDS.
 " 872 + 75 " " " 134 " "
 " 886 + 12 " " " 134 " "
 " 874 + 53 TO 885 + 97 2542 " "

ANCHORAGES: GUARD FENCE STA. 893-899 - 4 ANCHORS.

NET C. LENGTH, STA. 892 TO 910 = 1800'

89A C. 115 F. 121 BORROW 132 C. 107 F. 825 S. 30% BORROW 666
 5.30% C. 316 F. 169 S. 30% BORROW 294
 CSE 16 C.Y. C. 466 F. 618 S. 30% BORROW 295
 CSE 21 C.Y. C. 152 F. 266 BORROW 194
 5.30%



5537

5537

END OF PROJECT - 921+75