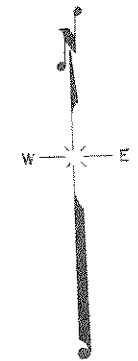


BPR DIVISION	PROJECT	SHEET NUMBER	TOTAL SHEETS
S N	S 0569(4)	9	36



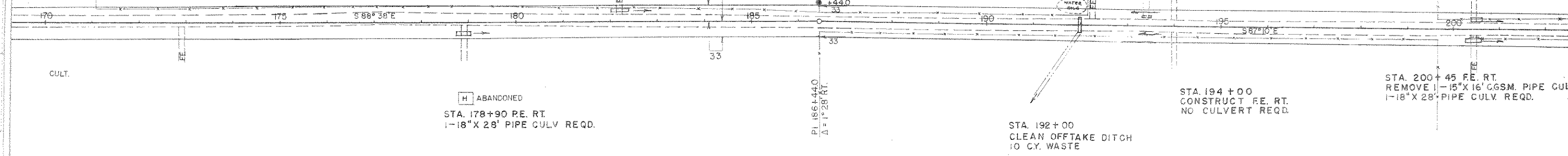
STA. 182+20 FE. LT.  
1-24" X 26' PIPE CULV. REQD.

SHACK

STA. 194+00  
CONSTRUCT FE. LT.  
NO CULV. REQD.

STA. 200+45  
CONSTRUCT FE. LT.  
1-18" X 28' PIPE CULV. REQD.

PLAN  
DRAWN BY: BB  
CHECKED BY: DB  
DATE: 5/23  
SCALE: AS SHOWN  
NOTE: BUSH CALCULATIONS CHECKED BY: B. B. B. 5/23



ABANDONED  
STA. 178+90 P.E. RT.  
1-18" X 28' PIPE CULV. REQD.

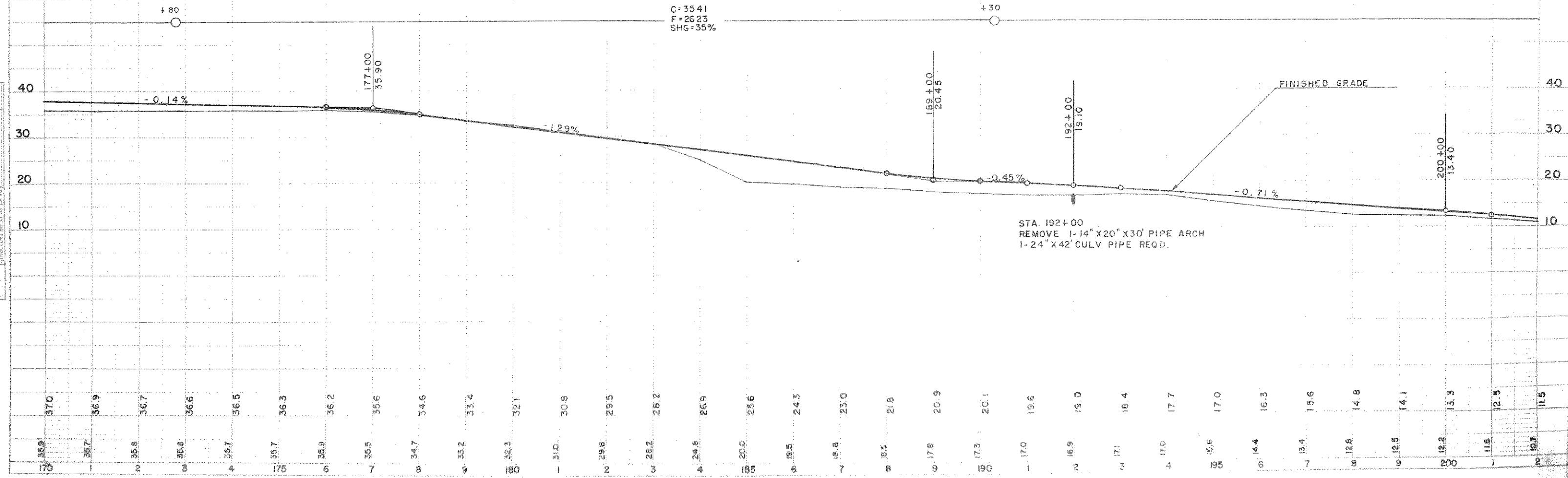
STA. 194+00  
CONSTRUCT FE. RT.  
NO CULVERT REQD.

STA. 200+45 FE. RT.  
REMOVE 1-15" X 16' CGSM. PIPE CULV.  
1-18" X 28' PIPE CULV. REQD.

BENCH MARKS

NO	STATION	DESCRIPTION	EL.
19	178+10	DOUBLE 12" OAK 65' RT.	35.77
20	186+40	DOUBLE ELM 65' RT.	18.98
21	195+85	24" PINE STUMP 60' RT.	14.38

NET CENTERLINE LENGTH STA. 170+00 TO STA. 200+00 = 3000 LIN. FT.



PROFILE  
DRAWN BY: BB  
CHECKED BY: DB  
DATE: 5/23  
SCALE: AS SHOWN  
NOTE: BUSH CALCULATIONS CHECKED BY: B. B. B. 5/23