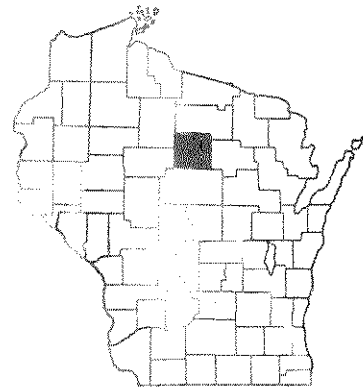


INDEX OF SHEETS

- SHEET NO. 1 TITLE
- SHEET NO. 2 TYPICAL CROSS SECTIONS
- SHEET NO. 2 ESTIMATE OF QUANTITIES
- SHEET NO. 2 MISCELLANEOUS QUANTITIES
- SHEET NO. - RIGHT OF WAY PLAT
- SHEET NO. 3-10 PLAN AND PROFILE STA. TO STA.
- SHEET NO. 11-14 STANDARD DETAILS
- SHEET NO. - DRAINAGE STRUCTURES
- SHEET NO. 15-36 CROSS SECTIONS

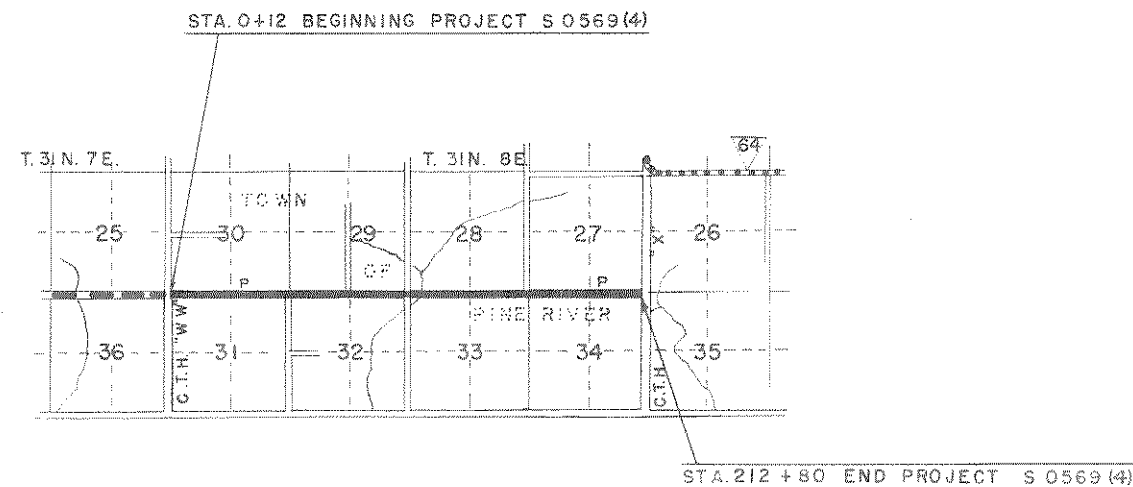


STATE OF WISCONSIN  
STATE HIGHWAY COMMISSION OF WISCONSIN

PLAN AND PROFILE OF PROPOSED  
C.T.H. "W" - C.T.H. "X" ROAD  
C.T.H. "P"  
LINCOLN COUNTY  
PROJECT S 0569(4)

COUNTY AND HIGHWAY	ROUTE AND SECTION	CLASS AND AGREEMENT		FEDERAL DIVISION OFFICE	SHEET NUMBER	TOTAL SHEETS
		STATE	FEDERAL			
35.6	569.0		11.4	WIS. 5N	1	36

PLAN 1 IN. = 100 FT.  
PROFILE HOR. 1 IN. = 100 FT. VERT. 1 IN. = 10 FT.  
CROSS SECTIONS HOR. 1 IN. = 5 FT. VERT. 1 IN. = 5 FT.



CONVENTIONAL SIGNS

- |   |  |
|---|--|
| <p>STATE LINE.....</p> <p>COUNTY LINE.....</p> <p>TOWNSHIP OR RANGE LINE.....</p> <p>SECTION LINE.....</p> <p>NEW RIGHT OF WAY LINE.....</p> <p>PRESENT RIGHT OF WAY LINE.....</p> <p>WIRE FENCE { WOVEN.....<br/>BARBED.....</p> <p>LOT LINE.....</p> <p>CORPORATE OR CITY LIMITS.....</p> <p>PROPERTY LINE.....</p> <p>TRAVELED WAY OR I.P.E.....</p> <p>RAILROADS.....</p> <p>BASE OR SURVEY LINE.....</p> | <p>CULVERTS IN PLACE.....</p> <p>CULVERTS REQUIRED.....</p> <p>DROP INLET.....</p> <p>POWER POLE.....</p> <p>TELEPHONE OR TELEGRAPH POLE.....</p> <p>RIGHT OF WAY MARKERS.....</p> <p>REFERENCE STAKE FOR HUBS ONLY.....</p> <p>MARSH.....</p> <p>HEDGE.....</p> <p>TREES.....</p> <p>GROUND ELEVATION..... DATUM LINE 73.9</p> <p>GRADE ELEVATION..... DATUM LINE 75.16</p> |
|---|--|

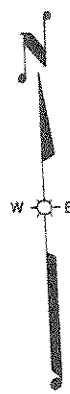
LAYOUT

SCALE 0 1/2 1

TOTAL NET LENGTH OF CENTERLINE = 4.028 MILES

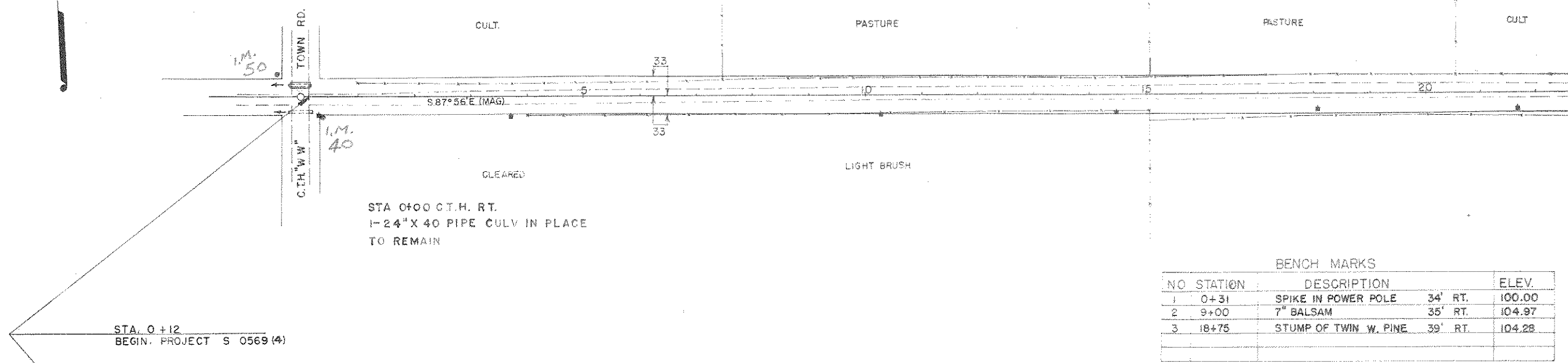
STATE HIGHWAY COMMISSION OF WISCONSIN MADISON, WIS.	DEPARTMENT OF COMMERCE BUREAU OF PUBLIC ROADS
<p>PROJECT: C.E.H.R.M.B. NOTE BOOK 8400</p> <p>DATE: 7-9-53</p> <p>CORRECTED BY: <i>E. C. Rostetter</i></p> <p>DATE: 7/13/53</p>	<p>RECOMMENDED FOR APPROVAL:</p> <p>DISTRICT ENGINEER DATE</p> <p>APPROVED:</p> <p>DIVISION ENGINEER DATE</p>
<p>CONSTRUCTION ENGINEER: <i>E. C. Rostetter</i></p> <p>STATE HIGHWAY ENGINEER</p>	

BPR DIVISION	PROJECT	SHEET NUMBER	TOTAL SHEETS
5 N	S 0569(4)	3	36



STA 0+00 ENTRANCE LT.  
REMOVE 1-18" X 32' C.G.S.M. PIPE CULVERT  
1-24" X 34' PIPE CULV. REQD.

STA 0+00 C.T.H. RT.  
1-24" X 40 PIPE CULV IN PLACE  
TO REMAIN

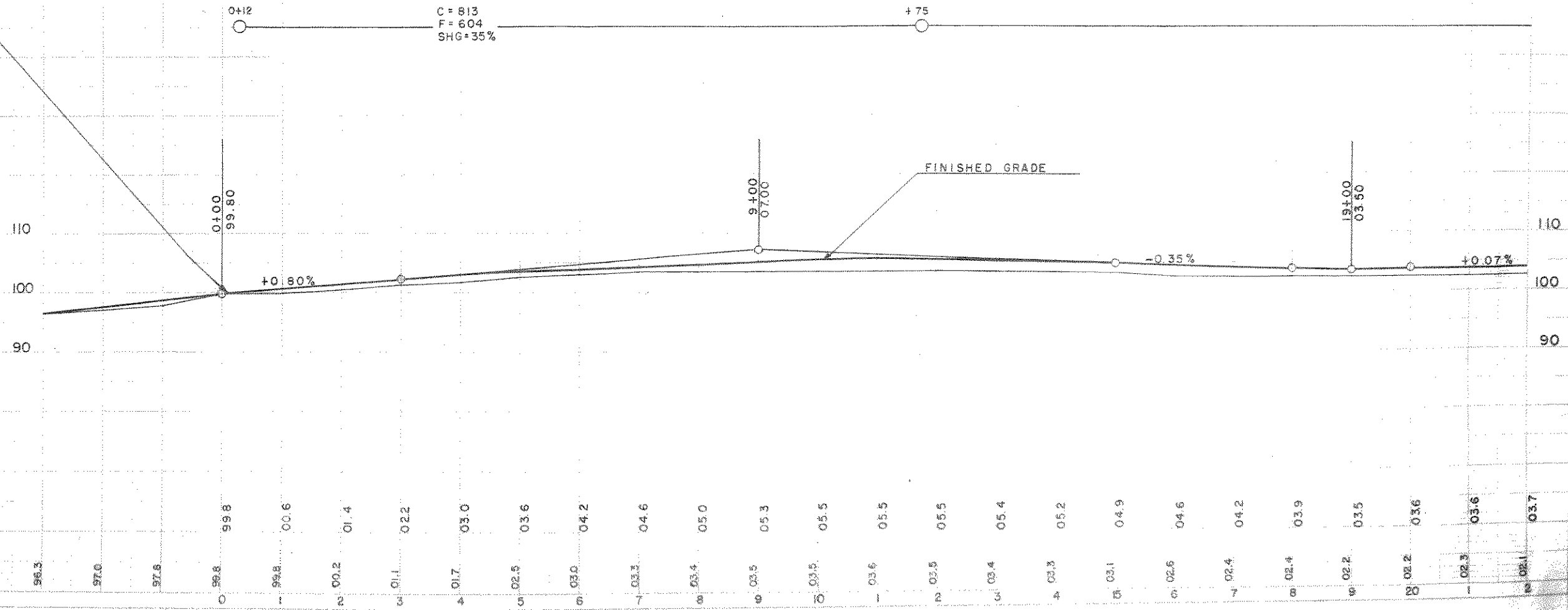


BENCH MARKS

NO	STATION	DESCRIPTION		ELEV.
1	0+31	SPIKE IN POWER POLE	34' RT.	100.00
2	9+00	7" BALSAM	35' RT.	104.97
3	18+75	STUMP OF TWIN W. PINE	39' RT.	104.28

STA. 0+12  
BEGIN. PROJECT S 0569 (4)

NET CENTERLINE LENGTH STA. 0+12 TO STA. 20+00 = 1988 LIN. FT.



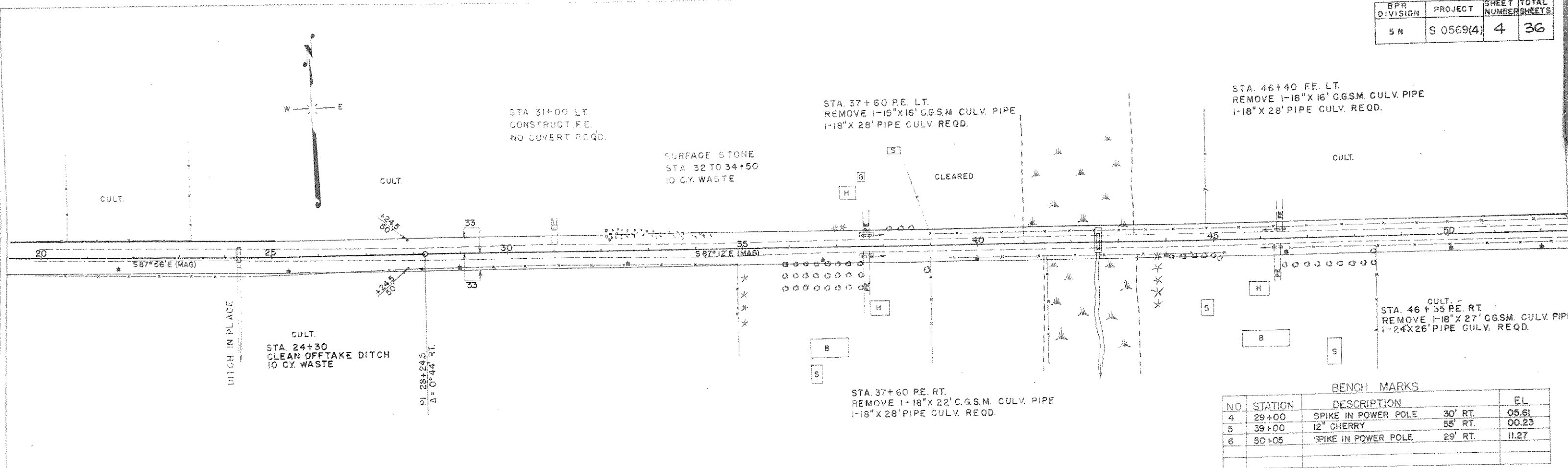
PLAN  
DATE: 11/22/00  
SCALE: 1"=40'

PROFILE  
DATE: 11/22/00  
SCALE: 1"=40'

BPR DIVISION	PROJECT	SHEET TOTAL	
S N	S 0569(4)	4	36

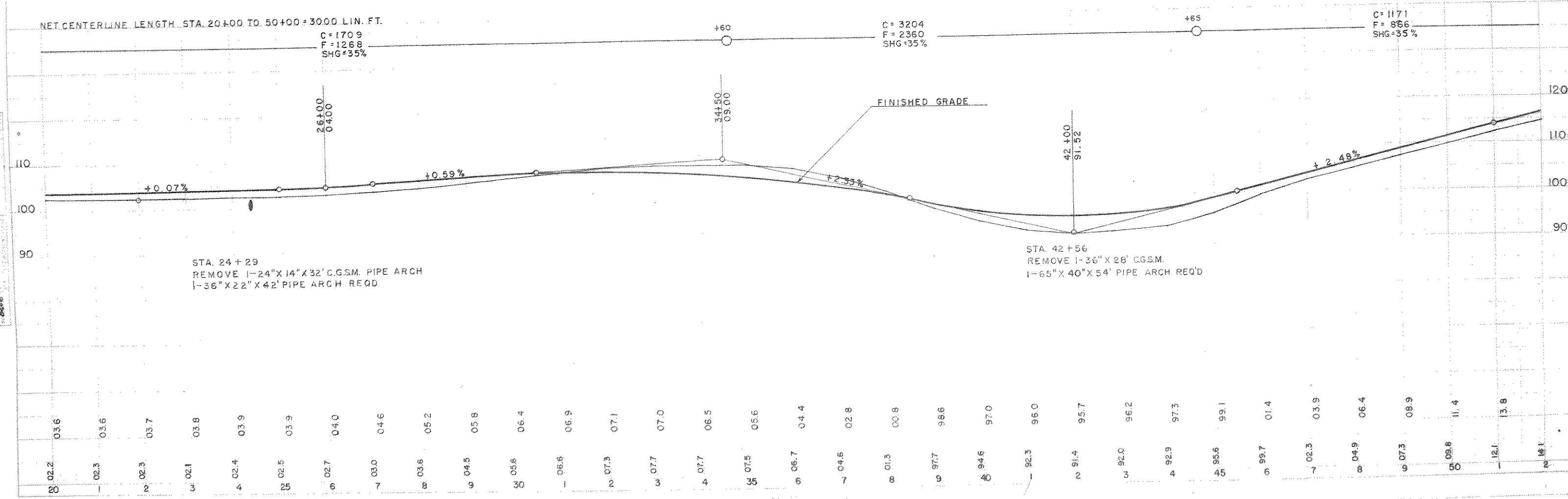
PLAN  
 DATE: 8/22/82  
 DRAWN BY: [Signature]  
 CHECKED BY: [Signature]  
 SCALE: AS SHOWN

PROFILE  
 DATE: 8/22/82  
 DRAWN BY: [Signature]  
 CHECKED BY: [Signature]  
 SCALE: AS SHOWN



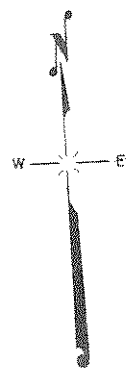
BENCH MARKS

NO	STATION	DESCRIPTION	EL.
4	29+00	SPIKE IN POWER POLE 30' RT.	05.61
5	39+00	12" CHERRY 55' RT.	00.23
6	50+05	SPIKE IN POWER POLE 29' RT.	11.27



BPR DIVISION	PROJECT	SHEET NUMBER	TOTAL SHEETS
5 N	S 0569(4)	5	36

STA. 54+75 ENT. LT.  
1-18"X34' PIPE CULV. REQD.



STA. 57+45 PE. LT.  
REMOVE 1-15"X16' CGSM. PIPE CULV.  
1-18"X 28' PIPE CULV. REQD.

STA. 72+75 PE. LT.  
REMOVE 1-18"X16' CGSM. PIPE CULV.  
1-18"X 28' PIPE CULV. REQD.

CULT.

CULT.

CULT.

CULT.

STA. 64+60 PE. RT.  
REMOVE 1-15"X16' CGSM. PIPE CULV.  
1-18"X 28' PIPE CULV. REQD.

STA. 75+85 PE. RT.  
REMOVE 1-15"X18' CGSM. PIPE CULV.  
1-18"X 28' PIPE CULV. REQD.

STA. 72+00  
CLEAN OFF TAKE DITCH  
10 C.Y. WASTE

SURFACE STONE  
5 C.Y. PER STA 68-76  
15 C.Y. PER STA 75-80

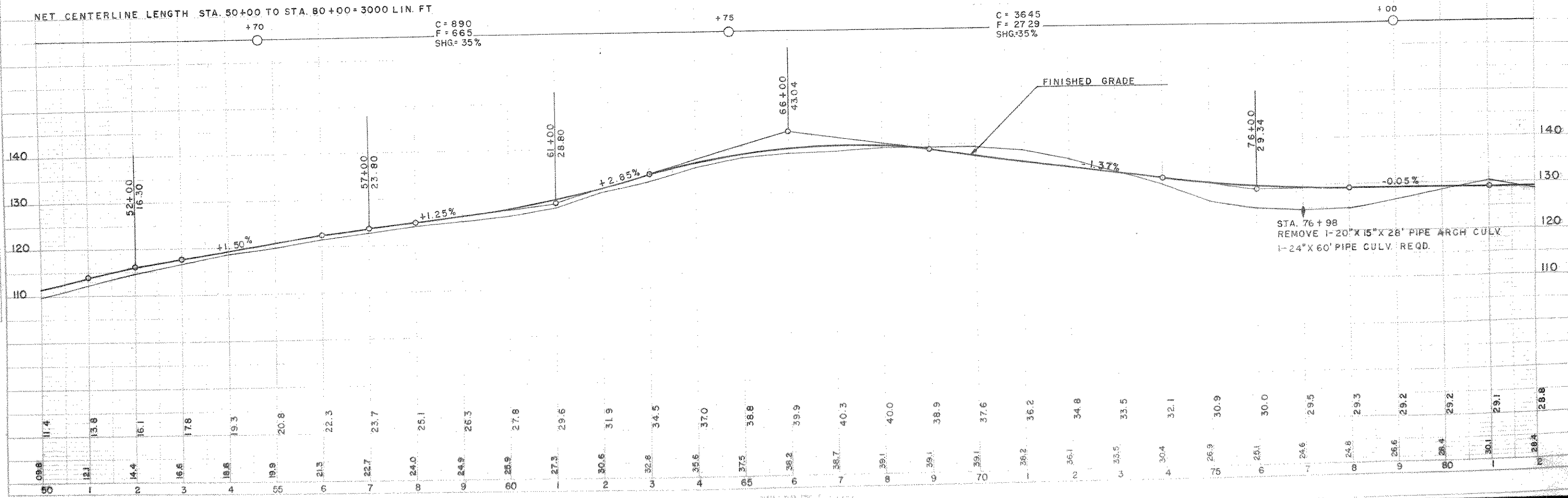
BENCH MARKS

NO	STATION	DESCRIPTION		EL.
6	50+05	SPIKE IN POWER POLE	29' RT.	11.27
7	61+47	"	27' RT.	29.26
8	70+15	8" MAPLE	40' LT.	40.12
9	79+35	14" HEMLOCK	45' LT.	30.16

NET CENTERLINE LENGTH STA. 50+00 TO STA. 80+00 = 3000 LIN. FT.

C = 890  
T = 665  
SHG = 35%

C = 3645  
F = 2729  
SHG = 35%



DATE: 5-12-54  
BY: [Signature]  
CHECKED: [Signature]  
SCALE: 1" = 40'

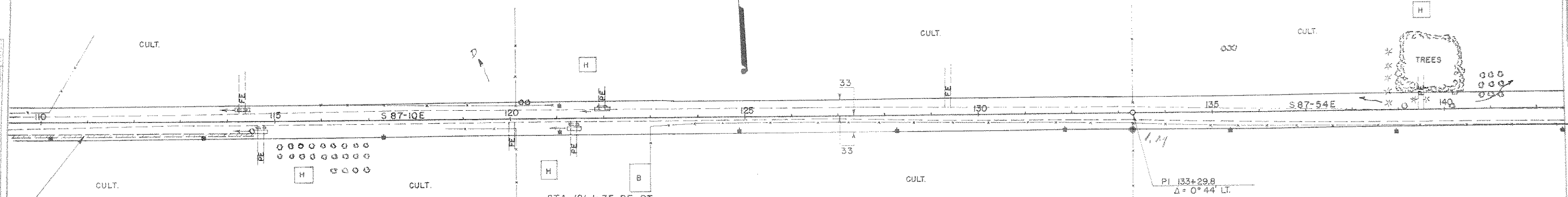
DATE: 5-12-54  
BY: [Signature]  
CHECKED: [Signature]  
SCALE: 1" = 40'



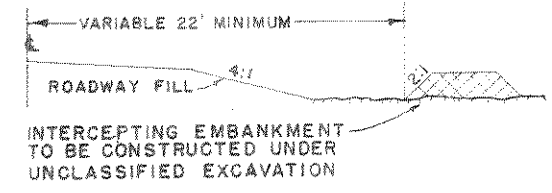
STA. 114 + 30 FE. LT.  
REMOVE 1-18" X 22' CGSM. PIPE CULV.  
1-18" X 28' PIPE CULV. REQD.

STA. 122 + 00 FE. LT.  
REMOVE 1-15" X 20' CGSM. PIPE CULV.  
1-18" X 28' PIPE CULV. REQD.

STA. 139 + 49 FE. LT.  
REMOVE 1-15" X 16' CGSM. PIPE CULV.  
NO CULV. REQD.



STA. 109+50 TO 114+70  
CONSTRUCT INTERCEPTING EMBANKMENT  
TO FORCE WATER TO CULVERT OFFTAKE



STA. 114 + 70 FE. RT.  
REMOVE 1-18" X 22' CGSM. PIPE CULV.  
1-24" X 26' PIPE CULV. REQD.

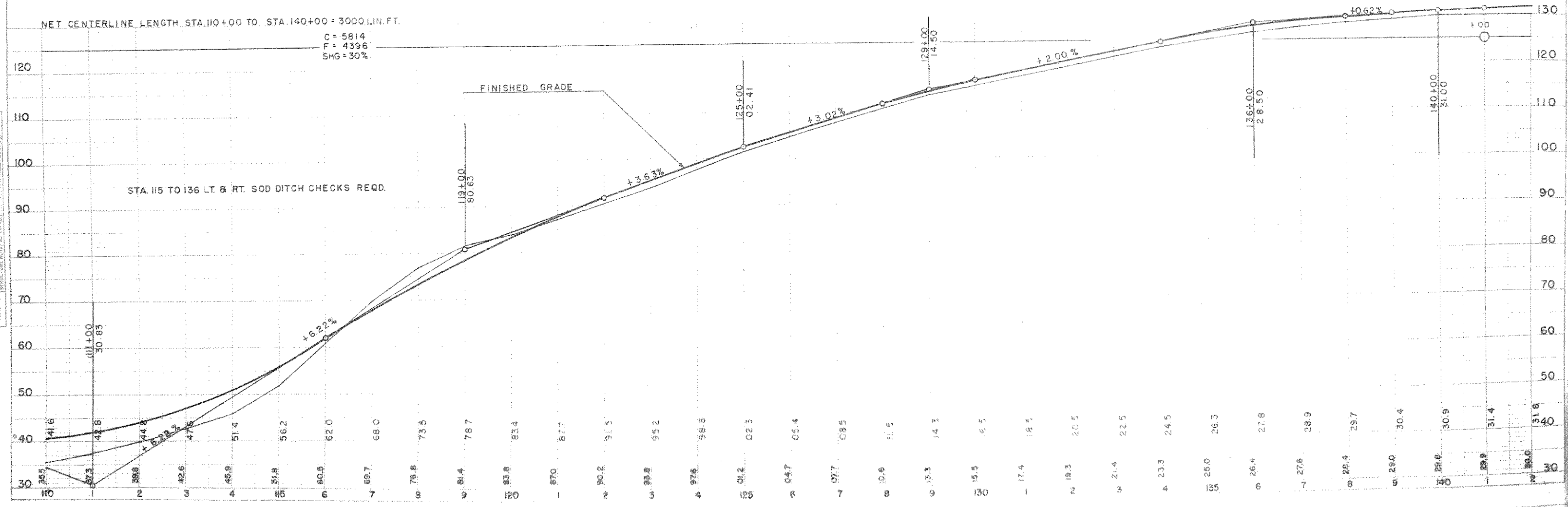
STA. 121 + 35 FE. RT.  
REMOVE 1-18" X 22' CGSM. PIPE CULV.  
1-24" X 26' PIPE REQD.

PI 133+29.8  
Δ = 0° 44' LT.

BENCH MARKS				
NO	STATION	DESCRIPTION		EL.
13	115+50	10" ELM	40' RT.	60.88
14	121+25	12" PINE	70' RT.	92.44
15	133+70	8" ELM	45' RT.	23.95

NET CENTERLINE LENGTH STA. 110+00 TO STA. 140+00 = 3000 LIN. FT.

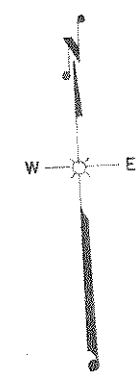
C = 5814  
F = 4396  
SHG = 30%



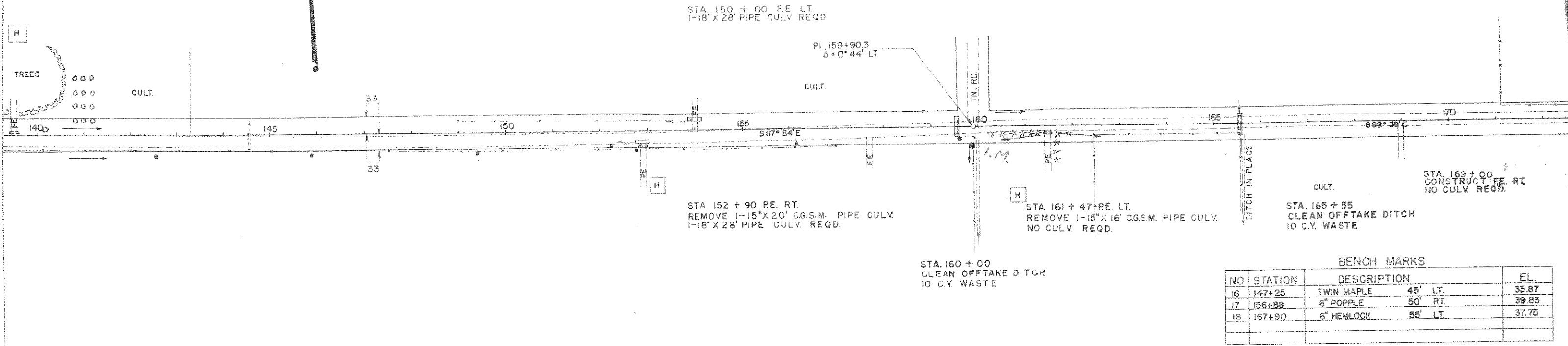
STA. 115 TO 136 LT. & RT. SOD DITCH CHECKS REQD.

PLAN  
DATE: 12-2-53  
BY: [Signature]  
CHECKED: [Signature]  
SCALE: AS SHOWN

PROFILE  
DATE: 12-2-53  
BY: [Signature]  
CHECKED: [Signature]  
SCALE: AS SHOWN



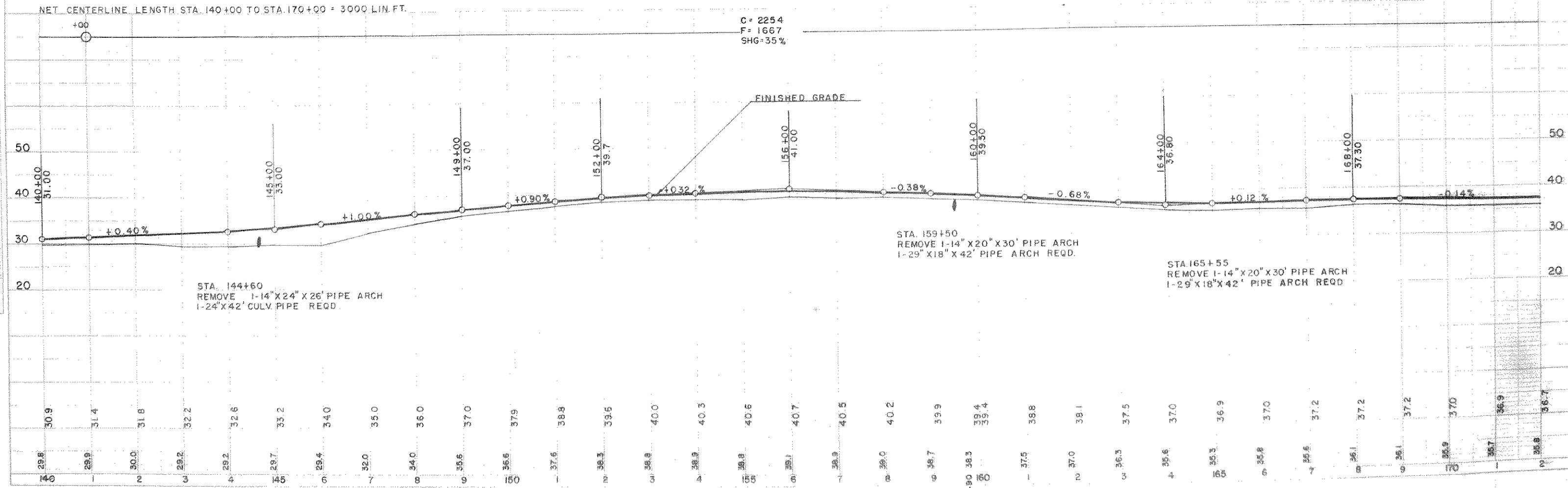
PLAN  
 DRAWN BY: [Signature]  
 CHECKED BY: [Signature]  
 DATE: 5-2-53



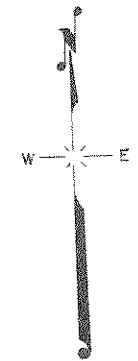
BENCH MARKS

NO	STATION	DESCRIPTION	EL.
16	147+25	TWIN MAPLE 45' LT.	35.87
17	156+88	6" POPLLE 50' RT.	39.83
18	167+90	6" HEMLOCK 55' LT.	37.75

PROFILE  
 DRAWN BY: [Signature]  
 CHECKED BY: [Signature]  
 DATE: 5-2-53



BPR DIVISION	PROJECT	SHEET NUMBER	TOTAL SHEETS
S N	S 0569(4)	9	36



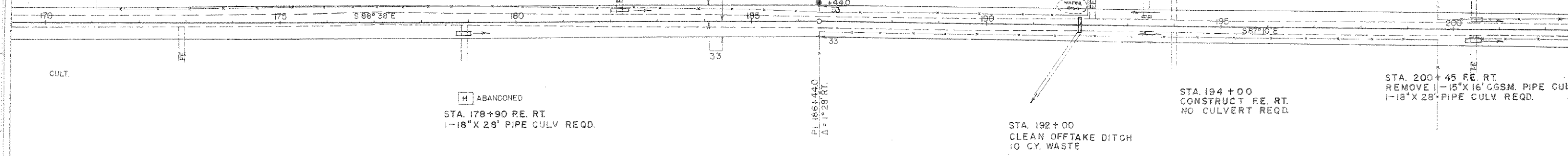
STA. 182+20 FE. LT.  
1-24" X 26' PIPE CULV. REQD.

SHACK

STA. 194+00  
CONSTRUCT FE. LT.  
NO CULV. REQD.

STA. 200+45  
CONSTRUCT FE. LT.  
1-18" X 28' PIPE CULV. REQD.

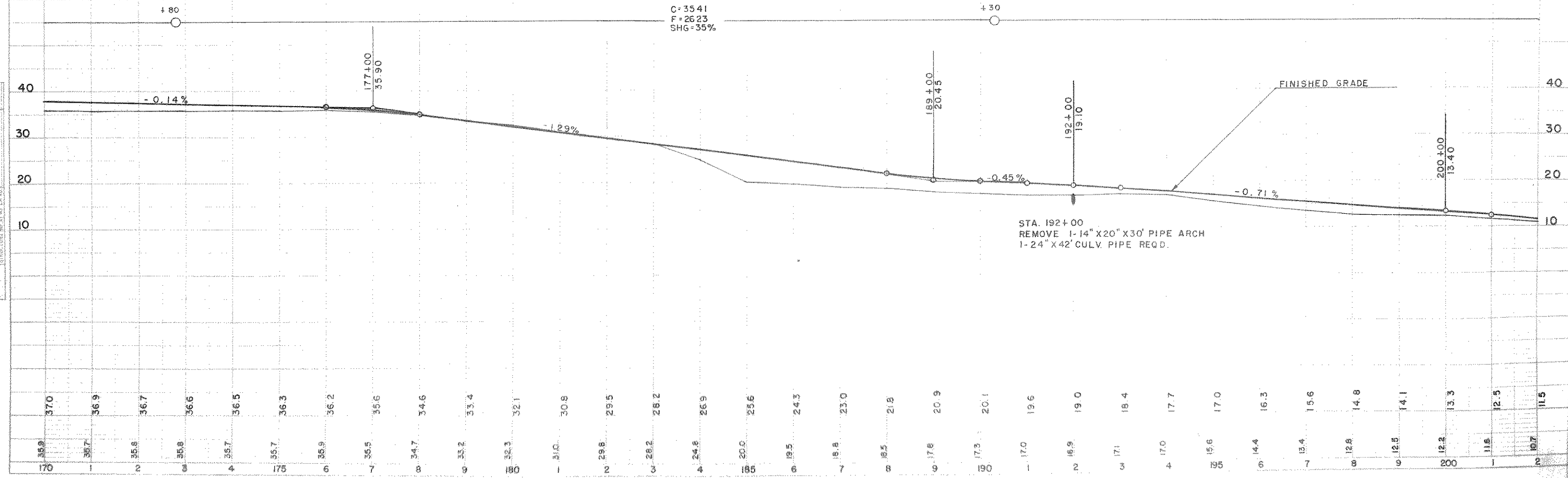
PLAN  
DRAWN BY: BB  
CHECKED BY: DB  
DATE: 5/23  
SCALE: AS SHOWN  
NOTE: BUSH CALCULATIONS CHECKED BY: BMB



BENCH MARKS

NO	STATION	DESCRIPTION	EL.
19	178+10	DOUBLE 12" OAK 65' RT.	35.77
20	186+40	DOUBLE ELM 65' RT.	18.98
21	195+85	24" PINE STUMP 60' RT.	14.38

NET CENTERLINE LENGTH STA. 170+00 TO STA. 200+00 = 3000 LIN. FT.



PROFILE  
DRAWN BY: BB  
CHECKED BY: DB  
DATE: 5/23  
SCALE: AS SHOWN  
NOTE: BUSH CALCULATIONS CHECKED BY: BMB

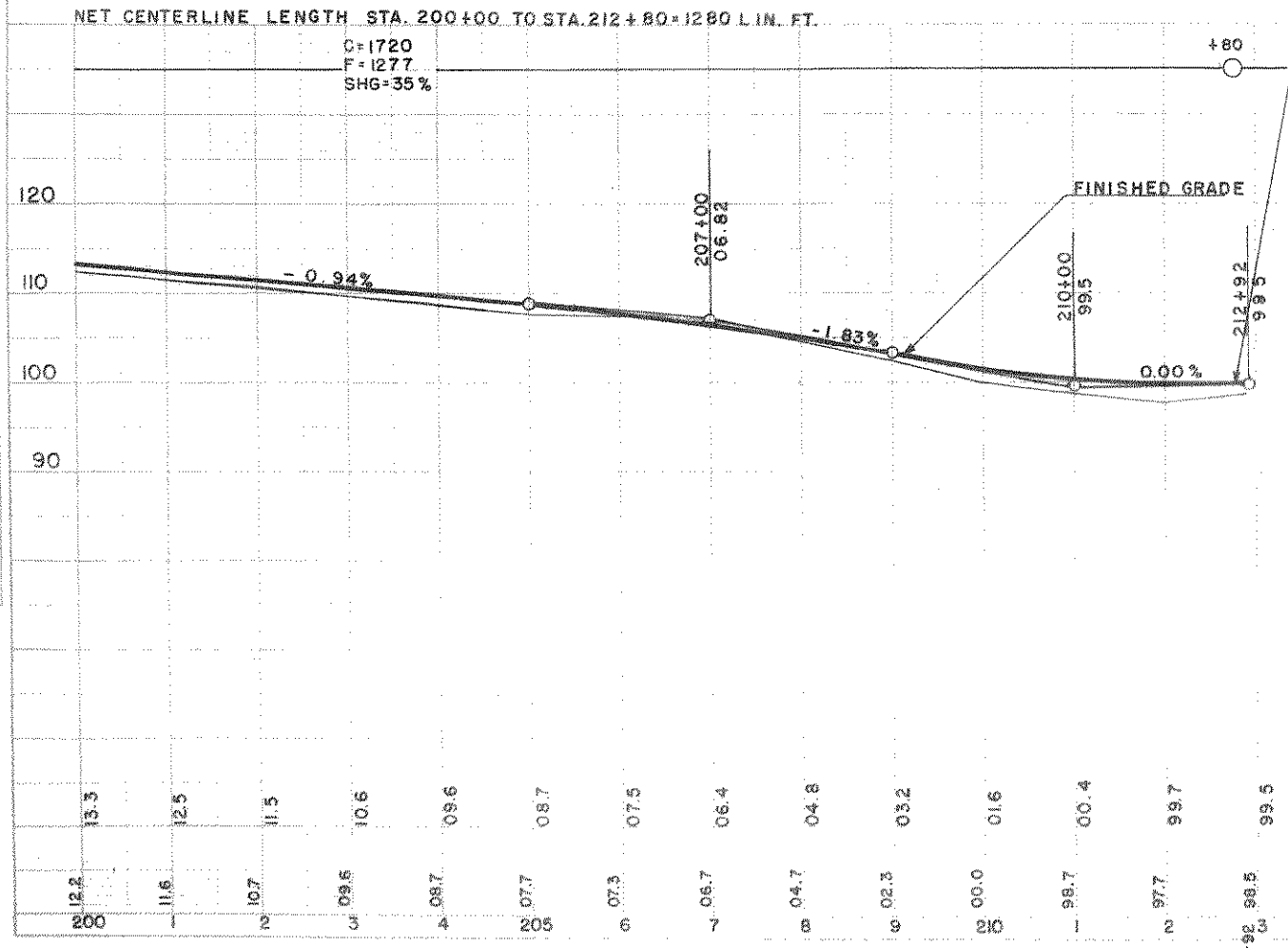
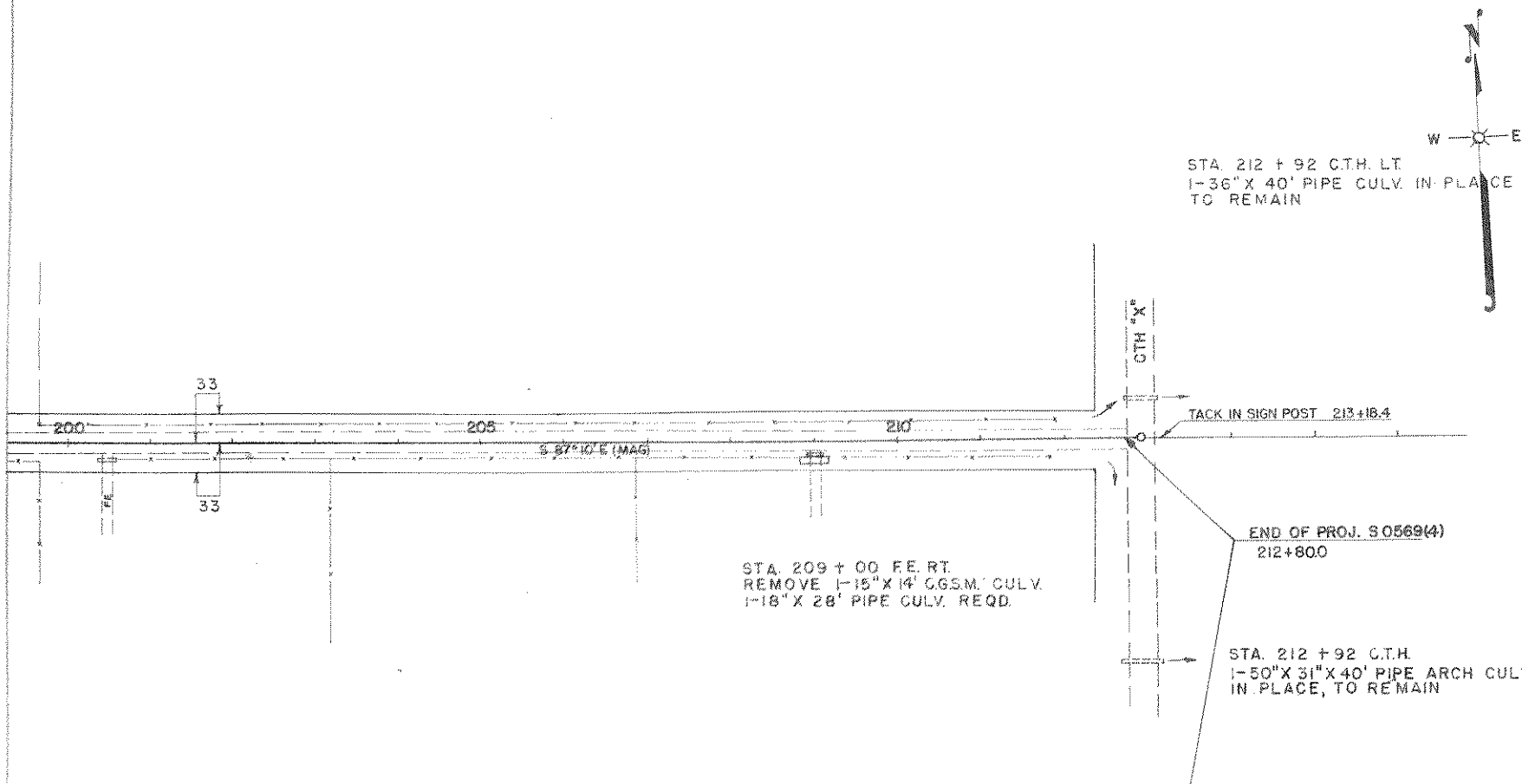
170	171	172	173	174	175	176	177	178	179	180	181	182	183	184	185	186	187	188	189	190	191	192	193	194	195	196	197	198	199	200	201	202
37.0	36.9	36.7	36.6	36.5	36.3	36.2	35.6	34.6	33.4	32.1	30.8	29.5	28.2	26.9	25.6	24.3	23.0	21.8	20.9	20.1	19.6	19.0	18.4	17.7	17.0	16.3	15.6	14.8	14.1	13.3	12.5	11.5



BPR DIVISION	PROJECT	SHEET NUMBER	TOTAL SHEETS
S N	S 0569(4)	10	36

PLAN	DATE	BY	CHECKED
APPROVED	05/22	BB	BB
NOTED			
NO. 8400			

PROFILE	DATE	BY	CHECKED
APPROVED	05/22	BB	BB
NOTED			
NO. 8400			



BENCH MARKS

NO	STATION	DESCRIPTION	EL.
22	206+35	30" PINE STUMP 120' RT.	107.98
23	213+20	T. POLE NO. 3108-35WI 55' RT.	96.33