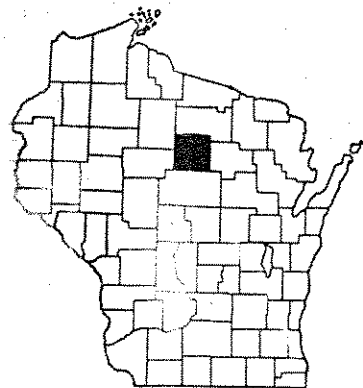


INDEX OF SHEETS

- SHEET NO. 1 TITLE
- SHEET NO. 2 TYPICAL CROSS SECTIONS
- SHEET NO. 2 ESTIMATE OF QUANTITIES
- SHEET NO. 2 MISCELLANEOUS QUANTITIES
- SHEET NO. - RIGHT OF WAY PLAT
- SHEET NO. 9-10 PLAN AND PROFILE STA.
- SHEET NO. 11-14 STANDARD DETAILS
- SHEET NO. - DRAINAGE STRUCTURES
- SHEET NO. 15-36 CROSS SECTIONS

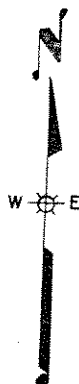
TO STA.



STATE OF WISCONSIN  
STATE HIGHWAY COMMISSION OF WISCONSIN

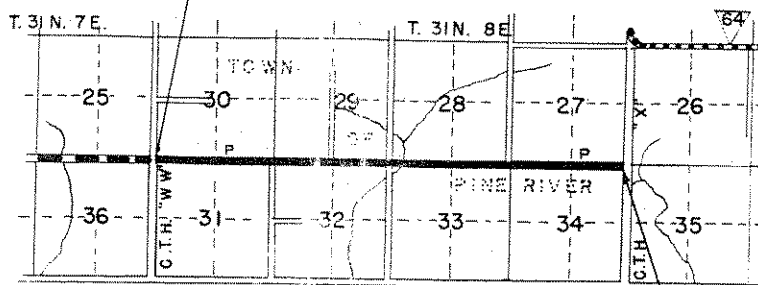
COUNTY AND HIGHWAY	ROUTE AND SECTION	CLASS AND AGREEMENT		FEDERAL DIVISION OFFICE	SHEET NUMBER	TOTAL SHEETS
		STATE	FEDERAL			
35.6	569.0		11.4	WIS. 5N	1	36

PLAN AND PROFILE OF PROPOSED  
C.T.H. "W" - C.T.H. "X" ROAD  
C.T.H. "P"  
LINCOLN COUNTY  
PROJECT S 0569(4)



PLAN 1 IN. = 100 FT.  
PROFILE HOR. 1 IN. = 100 FT. VERT. 1 IN. = 10 FT.  
CROSS SECTIONS HOR. 1 IN. = 5 FT. VERT. 1 IN. = 5 FT.

STA. 0+12 BEGINNING PROJECT S 0569(4)



STA. 212+80 END PROJECT S 0569(4)

APPROVED FOR

LINCOLN COUNTY

Aug 8 '53 Francis X Fox  
Date Commissioner Title

Aug 7

RECEIVED AT LINCOLN COUNTY  
COURTHOUSE THIS 1 DAY  
OF Oct 1953  
TAX DESCRIPTION OFFICE

CONVENTIONAL SIGNS

- |   |  |
|---|--|
| <p>STATE LINE.....</p> <p>COUNTY LINE.....</p> <p>TOWNSHIP OR RANGE LINE.....</p> <p>SECTION LINE.....</p> <p>SEW RIGHT OF WAY LINE.....</p> <p>PRESENT RIGHT OF WAY LINE.....</p> <p>FIRE FENCE { WOVEN.....<br/>BARBED.....</p> <p>ST. LINE.....</p> <p>CORPORATE OR CITY LIMITS.....</p> <p>PROPERTY LINE.....</p> <p>GRAVELED WAY OR P.E.....</p> <p>RAILROADS.....</p> <p>BOUNDARY OR SURVEY LINE.....</p> | <p>CULVERTS IN PLACE.....</p> <p>CULVERTS REQUIRED.....</p> <p>DROP INLET.....</p> <p>POWER POLE.....</p> <p>TELEPHONE OR TELEGRAPH POLE.....</p> <p>RIGHT OF WAY MARKERS.....</p> <p>REFERENCE STAKE FOR HUBS ONLY.....</p> <p>MARSH.....</p> <p>HEDGE.....</p> <p>TREES.....</p> <p>GROUND ELEVATION..... DATUM LINE 73.9</p> <p>GRADE ELEVATION..... DATUM LINE 73.16</p> |
|---|--|

LAYOUT

SCALE 0 1/2 1

TOTAL NET LENGTH OF CENTERLINE = 4.028 MI.

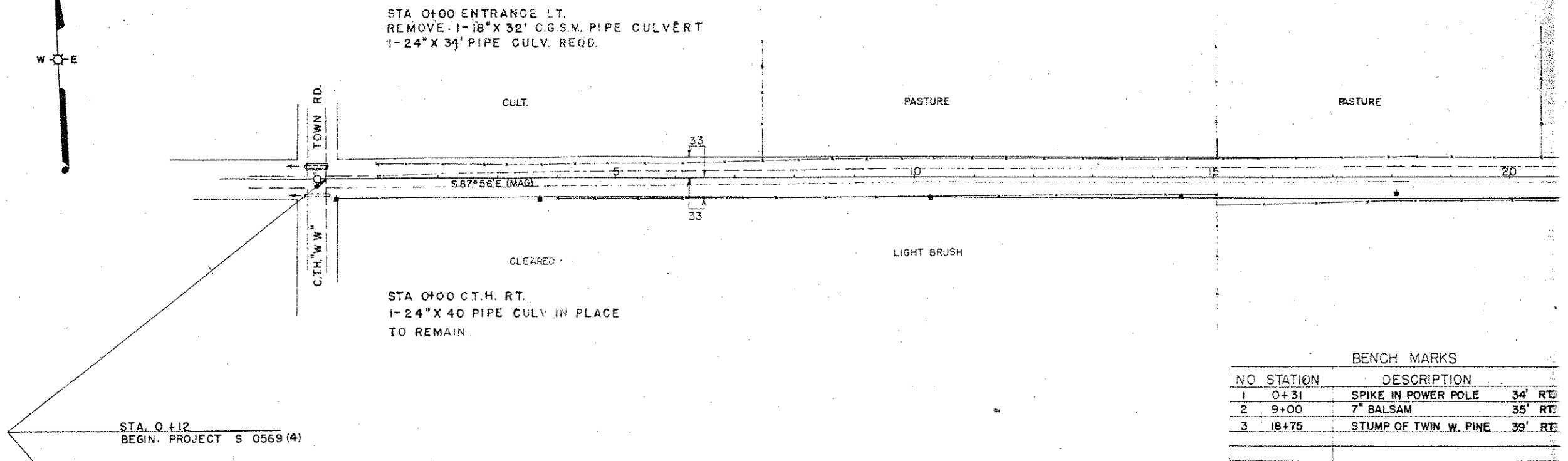
<p style="text-align: center;">STATE HIGHWAY COMMISSION OF WISCONSIN MADISON, WIS.</p> <p>DATE 7-2-53 <u>W. L. F.</u> CORRECT</p> <p>DATE 7/13/53 <u>W. L. F.</u> CORRECT</p> <p>DATE 7/13/53 <u>W. L. F.</u> CORRECT</p> <p>DATE 7/13/53 <u>W. L. F.</u> CORRECT</p>	<p style="text-align: center;">DEPARTMENT OF COMMERCE BUREAU OF PUBLIC ROADS</p> <p>RECOMMENDED FOR APPROVAL:</p> <p>DISTRICT ENGINEER DATE</p> <p>APPROVED:</p> <p>DIVISION ENGINEER DATE</p>
---	--



BPR DIVISION	PROJECT
5 N	S 0569

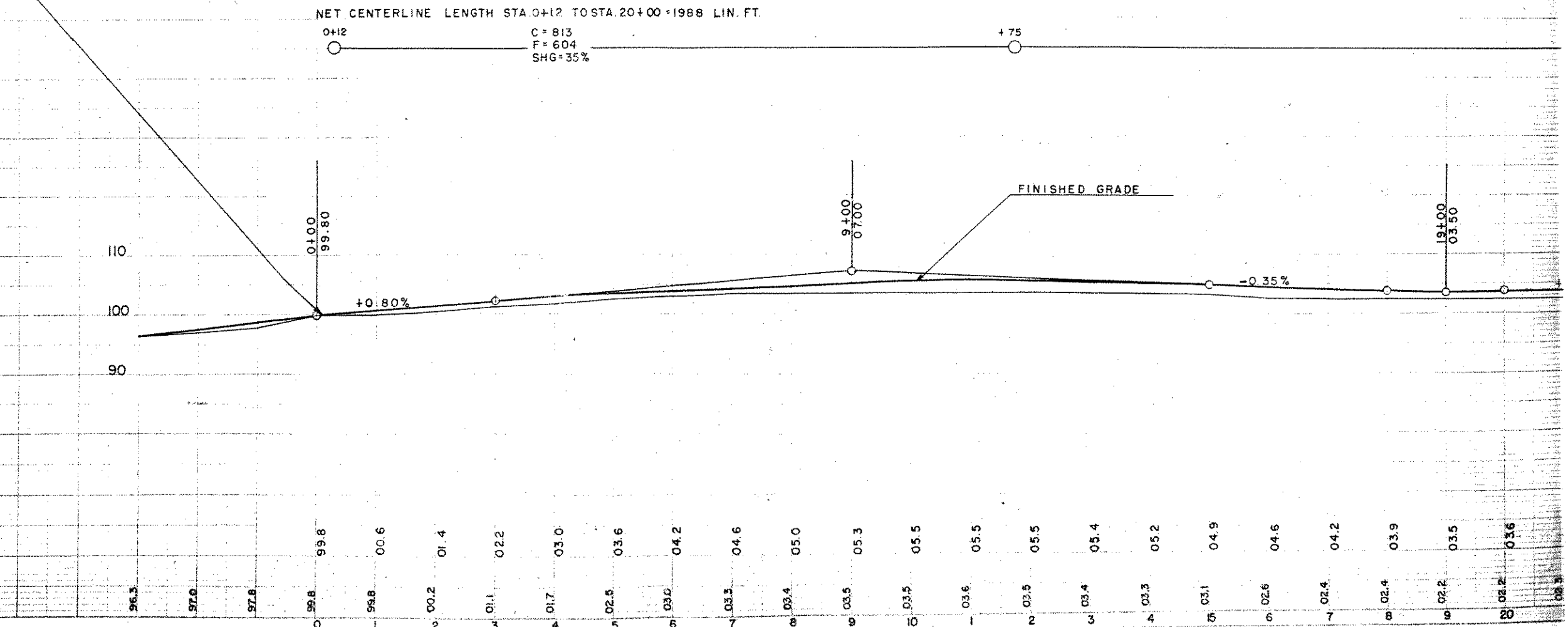


DATE	5-3-53
BY	R.B. D.D.
PLAN	8400



BENCH MARKS		
NO	STATION	DESCRIPTION
1	0+31	SPIKE IN POWER POLE 34' RT.
2	9+00	7" BALSAM 35' RT.
3	18+75	STUMP OF TWIN W. PINE 39' RT.

DATE	5-3-53
BY	R.B. D.D.
PROFILE	8400



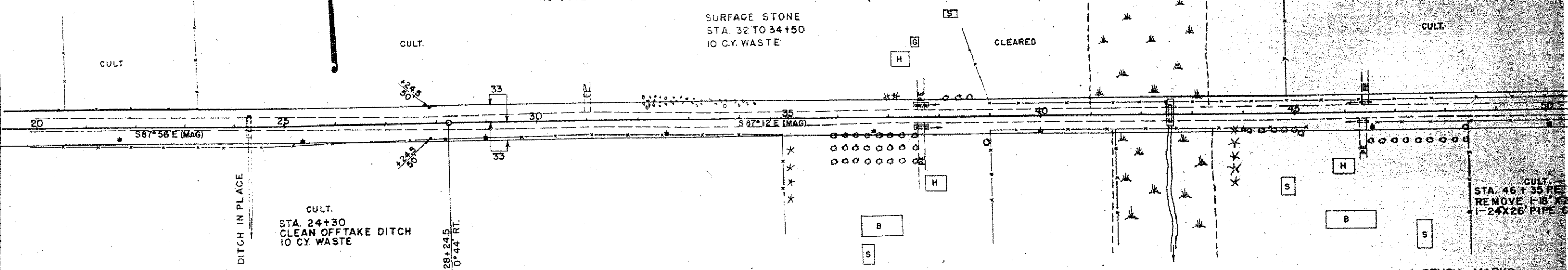
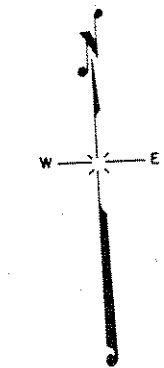
BPR DIVISION	PROJECT
5 N	S 0569

STA 31+00 LT.  
CONSTRUCT F.E.  
NO CUVERT REQD.

STA. 37+60 PE. LT.  
REMOVE 1-15"X16' C.G.S.M. CULV. PIPE  
1-18"X 28' PIPE CULV. REQD.

STA. 46+40 FE. LT.  
REMOVE 1-18"X16' C.G.S.M. CULV. PIPE  
1-18"X 28' PIPE CULV. REQD.

SURFACE STONE  
STA. 32 TO 34+50  
10 C.Y. WASTE



STA. 46+35 PE.  
REMOVE 1-18"X22'  
1-24"X26' PIPE C

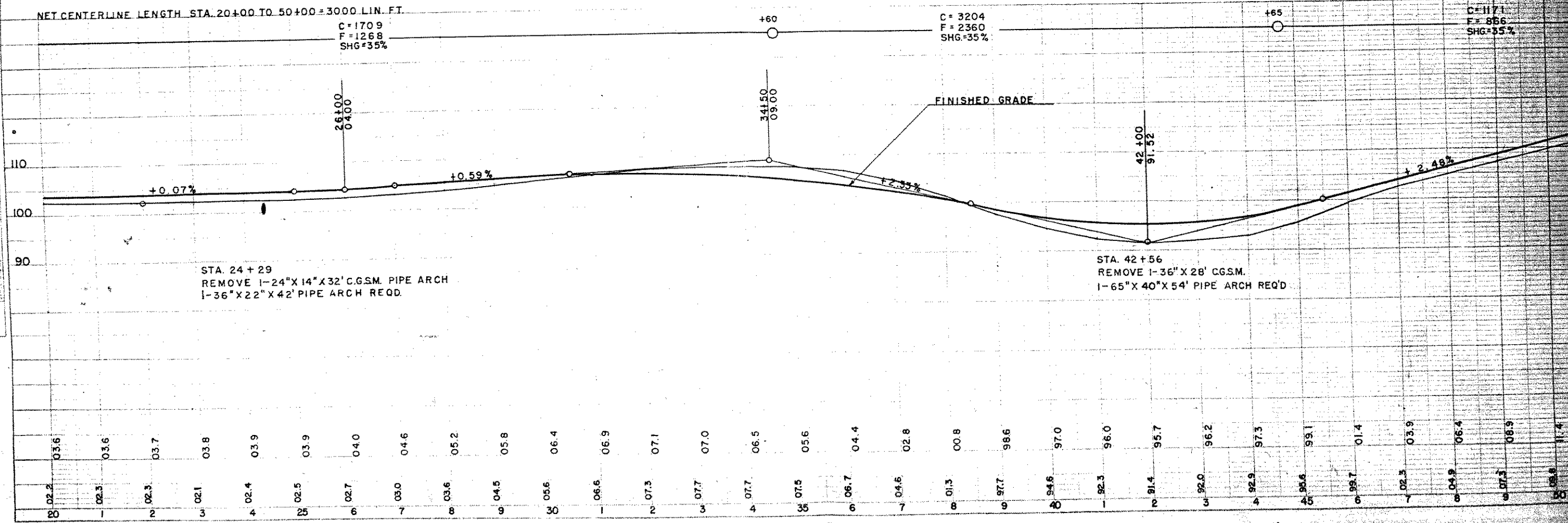
BENCH MARKS		
NO	STATION	DESCRIPTION
4	29+00	SPIKE IN POWER POLE 30' R
5	39+00	12" CHERRY 55' R
6	50+05	SPIKE IN POWER POLE 29' R

NET CENTERLINE LENGTH STA. 20+00 TO 50+00 = 3000 LIN. FT.

C = 1709  
F = 1268  
SHG = 35%

C = 3204  
F = 2360  
SHG = 35%

C = 1171  
F = 866  
SHG = 35%



STA. 24+29  
REMOVE 1-24"X14"X32' C.G.S.M. PIPE ARCH  
1-36"X22"X42' PIPE ARCH REQD.

STA. 42+56  
REMOVE 1-36"X 28' C.G.S.M.  
1-65"X 40"X 54' PIPE ARCH REQD.

DATE: 5-23-53  
BY: B.B.  
CHECKED: B.B.  
DATE: 5-23-53  
NOTE: BENCH MARKS CHECKED  
RT. OF WAY CHECKED  
NO. 8440  
PLAN

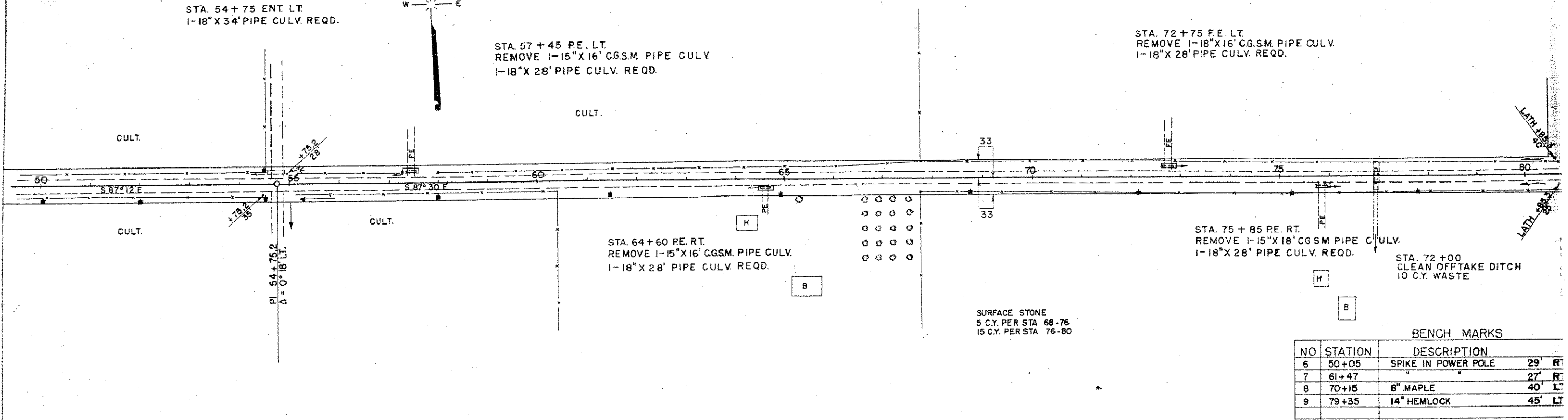
DATE: 5-23-53  
BY: B.B.  
CHECKED: B.B.  
DATE: 5-23-53  
NOTE: BENCH MARKS CHECKED  
RT. OF WAY CHECKED  
NO. 8440  
PROFILE



STA. 54+75 ENT. LT.  
1-18" X 34' PIPE CULV. REQD.

STA. 57+45 PE. LT.  
REMOVE 1-15" X 16' CGSM PIPE CULV.  
1-18" X 28' PIPE CULV. REQD.

STA. 72+75 FE. LT.  
REMOVE 1-18" X 16' CGSM PIPE CULV.  
1-18" X 28' PIPE CULV. REQD.



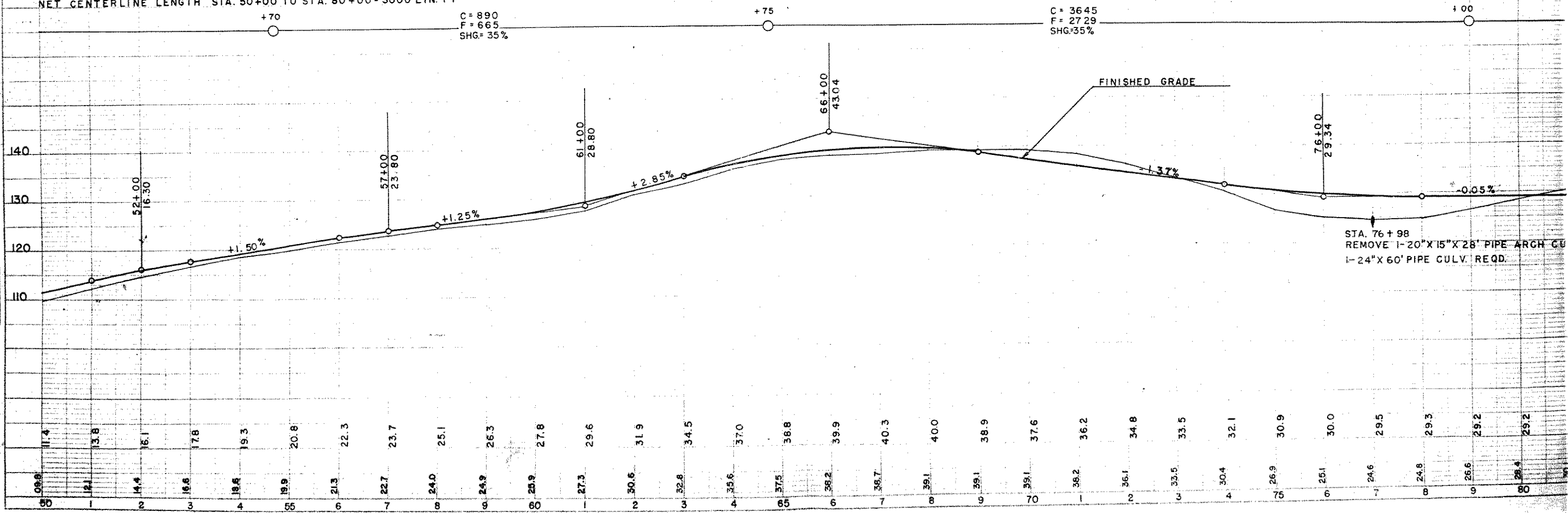
BENCH MARKS

NO	STATION	DESCRIPTION	HT
6	50+05	SPIKE IN POWER POLE	29' RT
7	61+47	"	27' RT
8	70+15	8" MAPLE	40' LT
9	79+35	14" HEMLOCK	45' LT

NET CENTERLINE LENGTH STA. 50+00 TO STA. 80+00 = 3000 LIN. FT

C = 890  
F = 665  
SHG = 35%

C = 3645  
F = 2729  
SHG = 35%



PLAN  
BY: [Signature]  
DATE: [Date]  
SCALE: 1" = 40'

PROFILE  
BY: [Signature]  
DATE: [Date]  
SCALE: 1" = 10'



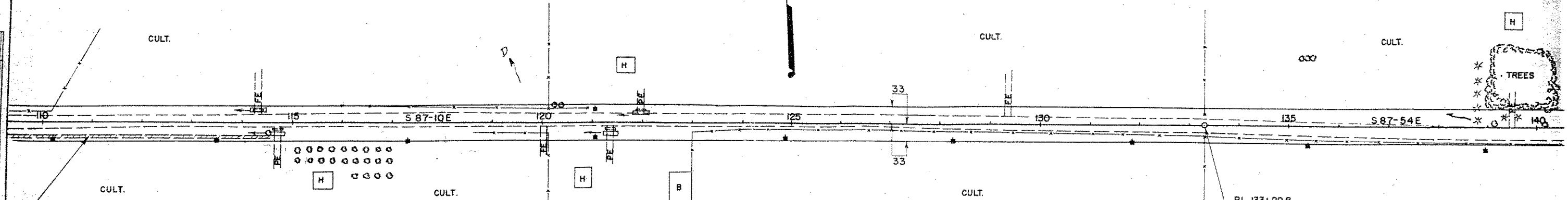
BPR DIVISION	PROJEC
5 N	S 0569

STA. 114+30 FE. LT.  
REMOVE 1-18" X 22' CGSM. PIPE CULV.  
1-18" X 28' PIPE CULV. REQD.

STA. 122+00 PE. LT.  
REMOVE 1-15" X 20' CGSM. PIPE  
1-18" X 28' PIPE CULV. REQD.

STA. 139+49 PE.  
REMOVE 1-15" X 16'  
NO CULV. REQD.

PLAN  
SURVEYED  
PLOTTED  
NOTE BOOK  
NO. 00000  
DATE  
2/28/53  
BY  
D.E.  
CHECKED  
D.E.

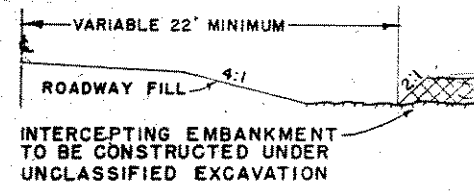


STA. 109+50 TO 114+70  
CONSTRUCT INTERCEPTING EMBANKMENT  
TO FORCE WATER TO CULVERT OFFTAKE

STA. 114+70 PE. RT.  
REMOVE 1-18" X 22' CGSM. PIPE CULV.  
1-24" X 26' PIPE CULV. REQD.

STA. 121+35 PE. RT.  
REMOVE 1-18" X 22' CGSM. PIPE CULV.  
1-24" X 26' PIPE REQD.

PI 133+29.8  
Δ = 0° 44' LT.

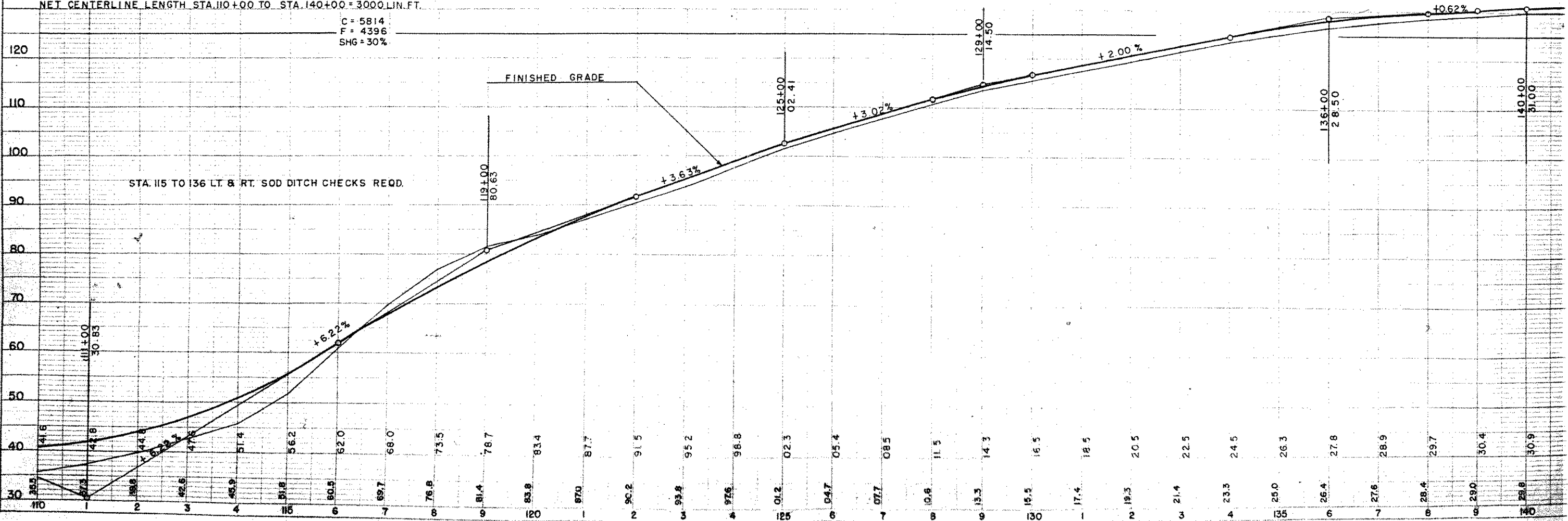


BENCH MARKS

NO	STATION	DESCRIPTION
13	115+50	10" ELM 40' RT.
14	121+25	12" PINE 70' RT.
15	133+70	8" ELM 45' RT.

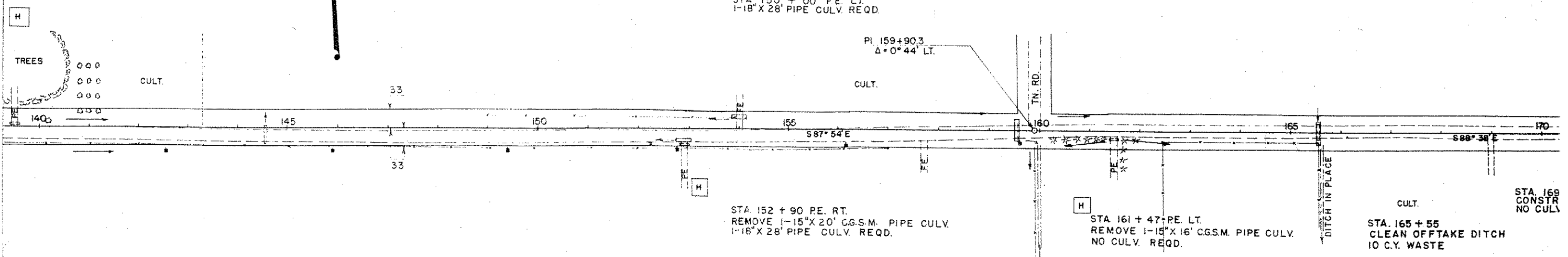
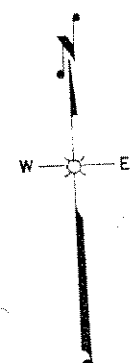
NET CENTERLINE LENGTH STA. 110+00 TO STA. 140+00 = 3000 LIN. FT.

C = 5814  
F = 4396  
SHG = 30%



STA. 115 TO 136 LT. & RT. SOD DITCH CHECKS REQD.

PROFILE  
SURVEYED  
PLOTTED  
NOTE BOOK  
NO. 00000  
DATE  
2/28/53  
BY  
D.E.  
CHECKED  
D.E.

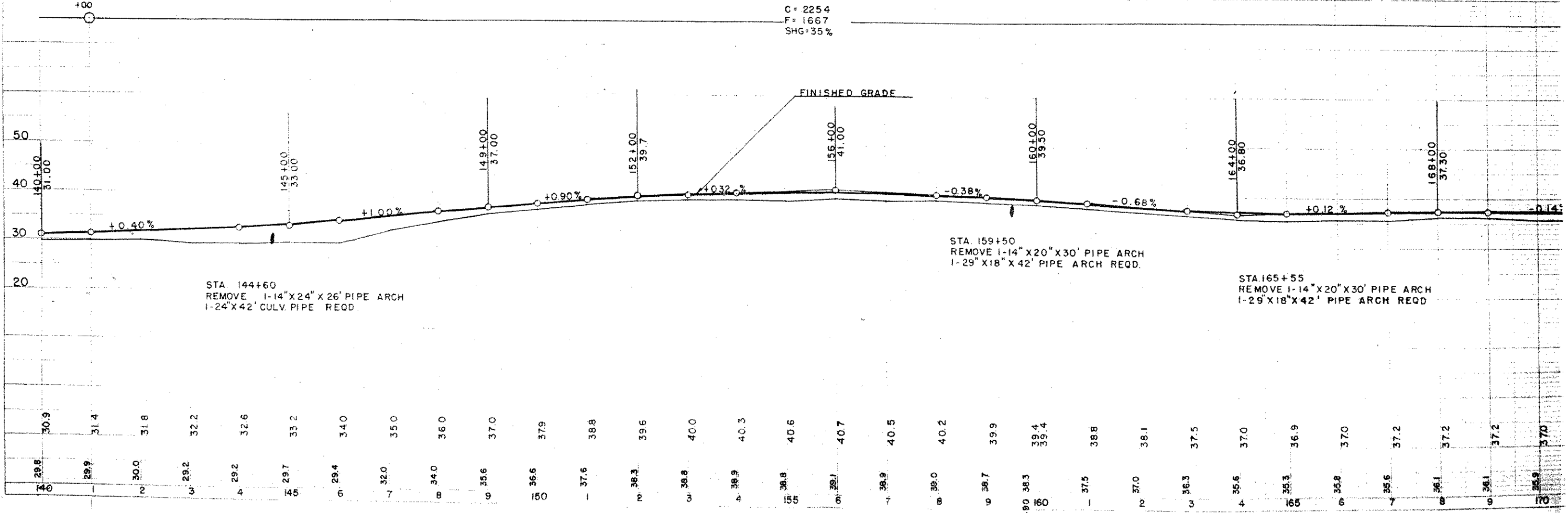


BENCH MARKS

NO	STATION	DESCRIPTION
16	147+25	TWIN MAPLE 45' LT.
17	156+88	6" POPPLE 50' RT.
18	167+90	6" HEMLOCK 55' LT.

NET CENTERLINE LENGTH STA. 140+00 TO STA. 170+00 = 3000 LIN. FT.

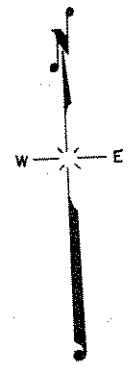
C = 2254  
F = 1667  
SHG = 35%



DATE: 5-53  
R.D.  
NO. 6400

PROFILE  
NOTES: SPACES CHECKED  
NO. 6400





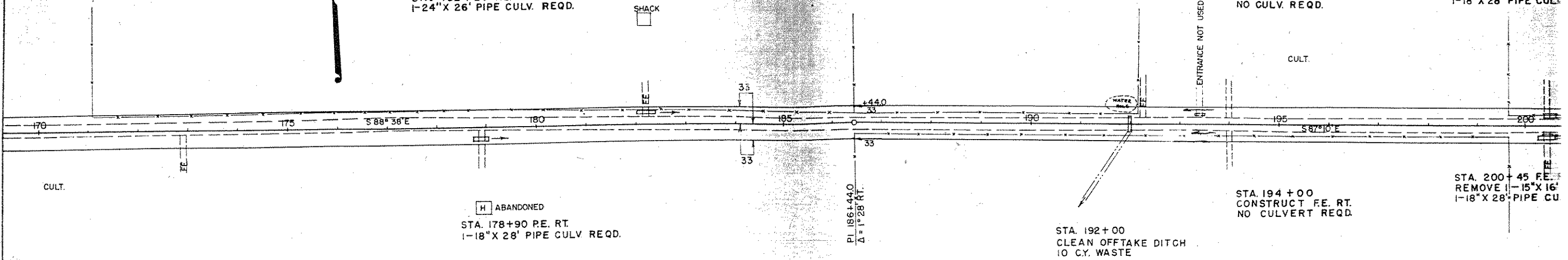
STA. 182+20 FE. LT.  
1-24" X 26' PIPE CULV. REQD.

SHACK

STA. 194+00  
CONSTRUCT FE. LT.  
NO CULV. REQD.

STA. 200+45  
CONSTRUCT FE. LT.  
1-18" X 28' PIPE CULV.

PLAN  
DATE: 10-27-53  
BY: R.B.  
CHECKED: D.E.  
NO. 6400



ABANDONED  
STA. 178+90 P.E. RT.  
1-18" X 28' PIPE CULV. REQD.

STA. 192+00  
CLEAN OFFTAKE DITCH  
10 CY. WASTE

STA. 194+00  
CONSTRUCT FE. RT.  
NO CULVERT REQD.

STA. 200+45 FE.  
REMOVE 1-15" X 16'  
1-18" X 28' PIPE CU.

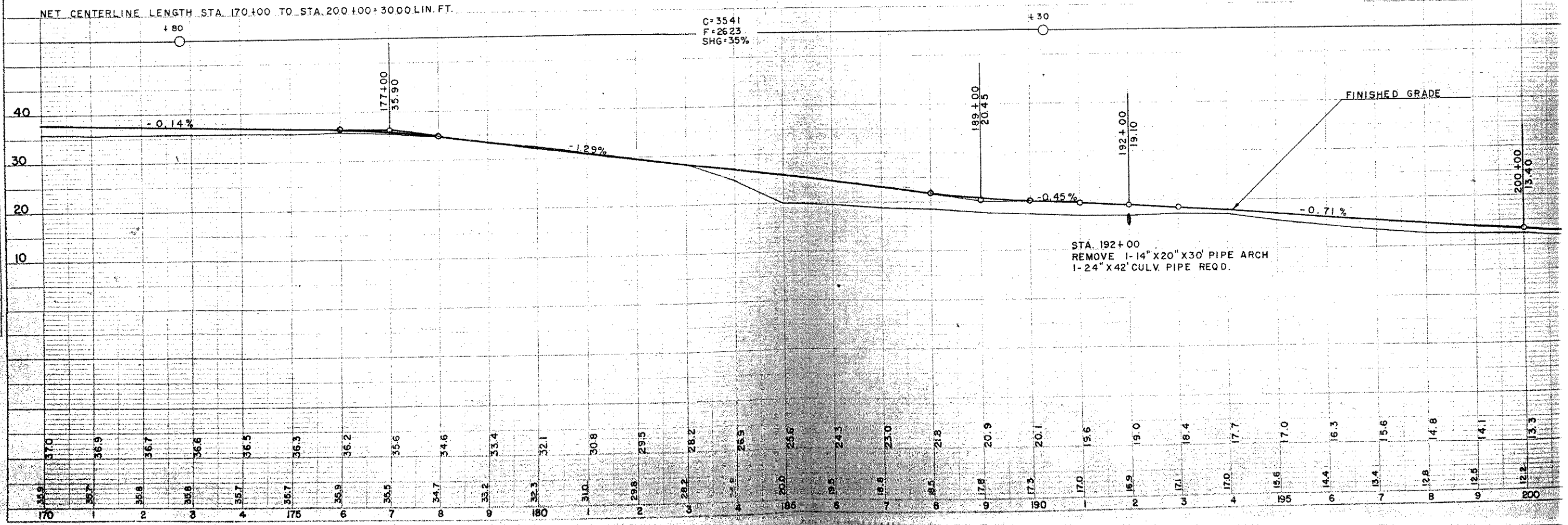
BENCH MARKS

NO	STATION	DESCRIPTION
19	178+10	DOUBLE 12" OAK 65' RT.
20	186+40	DOUBLE ELM 65' RT.
21	195+85	24" PINE STUMP 60' RT.

NET CENTERLINE LENGTH STA. 170+00 TO STA. 200+00 = 3000 LIN. FT.

C = 3541  
F = 2623  
SHG = 35%

PROFILE  
DATE: 10-27-53  
BY: R.B.  
CHECKED: D.E.  
NO. 6400



STA. 192+00  
REMOVE 1-14" X 20" X 30' PIPE ARCH  
1-24" X 42' CULV. PIPE REQD.



STA. 212 + 92 C.T.H. LT.  
1-36" X 40' PIPE CULV. IN PLACE  
TO REMAIN

STA. 209 + 00 F.E. RT.  
REMOVE 1-15" X 14" C.G.S.M. CULV.  
1-18" X 28' PIPE CULV. REQD.

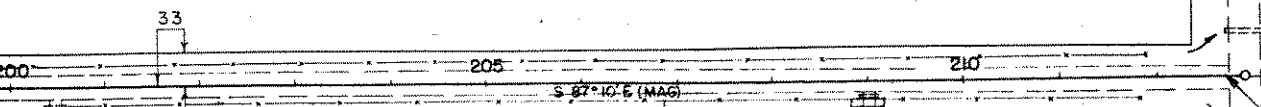
END OF PROJ. S0569(4)  
212+800

STA. 212 + 92 C.T.H.  
1-50" X 31" X 40' PIPE ARCH CULV.  
IN PLACE, TO REMAIN

TACK IN SIGN POST 213+19.4

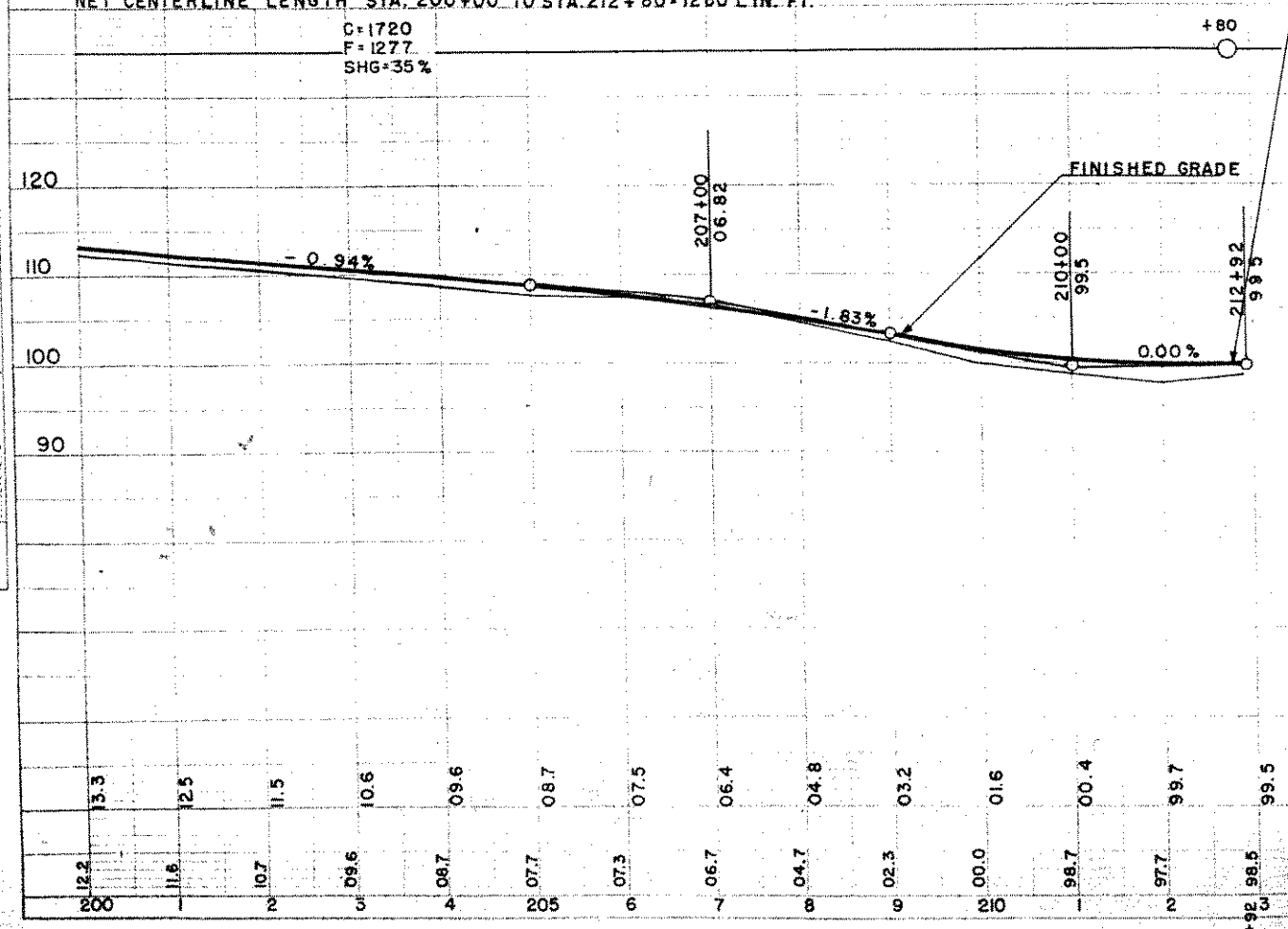
CTH "X"

S 87° 10' E (MAG)



NET CENTERLINE LENGTH STA. 200+00 TO STA. 212+80 = 1280 LIN. FT.

C=1720  
F=1277  
SHG=35%



BENCH MARKS

NO	STATION	DESCRIPTION
22	206+35	30" PINE STUMP 120' RT.
23	213+20	T. POLE NO. 310B-35WI 55' RT.

PLAN  
DATE: 8-21-52  
BY: [Signature]  
CHECKED: [Signature]  
SURVEYED: [Signature]  
NOTED: [Signature]  
NO. 6400

PROFILE  
DATE: 8-21-52  
BY: [Signature]  
CHECKED: [Signature]  
SURVEYED: [Signature]  
NOTED: [Signature]  
NO. 6400