

Sheet Number	Total Sheets

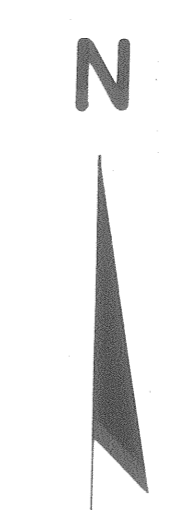
STATE OF WISCONSIN  
DEPARTMENT OF TRANSPORTATION  
DIVISION OF HIGHWAYS

PLAN AND PROFILE OF PROPOSED

PINE RIVER-C.T.H. "WW"  
C.T.H. "P"  
LINCOLN COUNTY

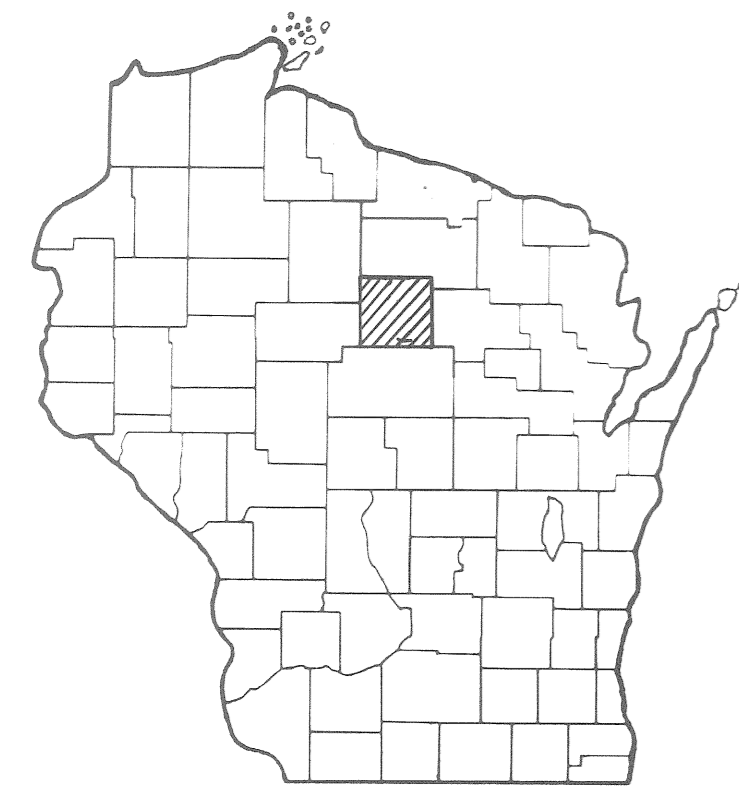
PROJECT IDENTIFICATION NUMBER	FEDERAL PROJECT DESIGNATION
<b>9424-2-70</b>	<b>S 0569 (8)</b>

Scales { Plan 1 in. = 100 ft.  
Profile Hor. 1 in. = 100 ft. Vert. 1 in. = 10 ft.  
Cross Sections Hor. 1 in. = 5 FT. Vert. 1 in. = 5 FT.



Index of Sheets

Sheet No. 1	Title
Sheet No.	Typical Cross Sections
Sheet No.	Estimate of Quantities
Sheet No.	Miscellaneous Quantities
Sheet No.	Right of Way Plat
Sheet No.	Plan and Profile Sta. 102+00 to Sta. 208+00
Sheet No.	Standard Details
Sheet No.	Drainage Structures
Sheet No.	Cross Sections

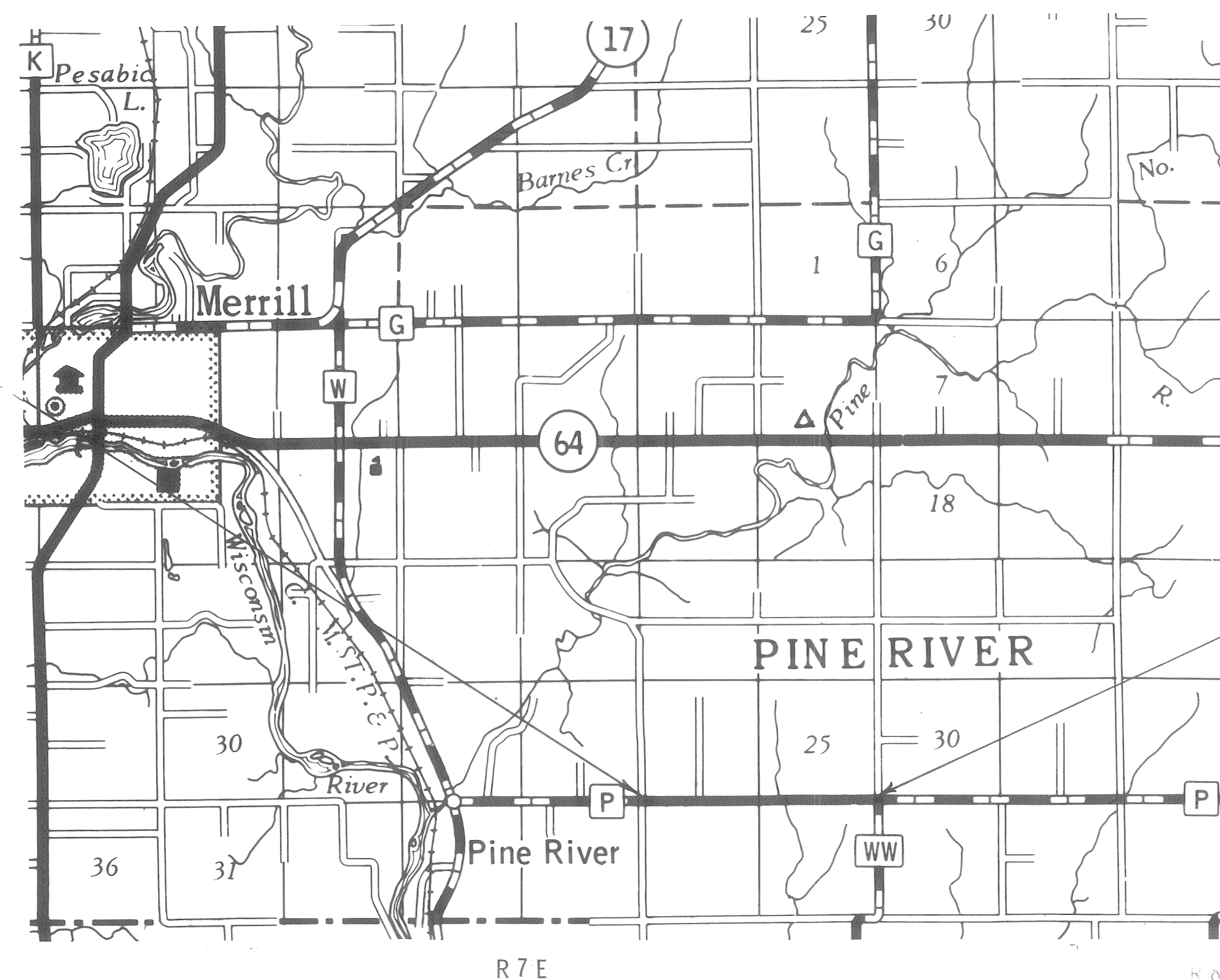


Design Designation

A. D. T.	197 = 246
A. D. T.	199 = 458
D. H. V.	= 52
D.	= 65 - 35 %
T.	= 10% ADT
V.	= 50 M. P. H.

BEGIN PROJECT S 0569(8) / 9424-2-70  
STA. 102+00 - STA. 102+00 END PROJECT  
N 474,392 (± 200) \* S 0569(7)  
E 2,105,280 (± 200) \*  
1.63' S. AND 62.00' W. OF THE N.E.  
COR. OF SEC. 34, T 31N, R 7E

END PROJECT S 0569(8) / 9424-2-70  
STA. 208+00  
N 474,392 (± 200) \*  
E 2,116,041 (± 200) \*  
0.39' N. AND 73.6' W. OF THE N.E.  
COR. OF SEC. 36, T31N, R 7E



\* SCALED FROM U. S. G. S. TOPOGRAPHICAL MAP MERRILL, WISCONSIN, QUADRANGLE FOR IDENTIFICATION ONLY.

Layout  
Scale 0 1 MI.

Total Net Length of Centerline = 2.008 Mi.

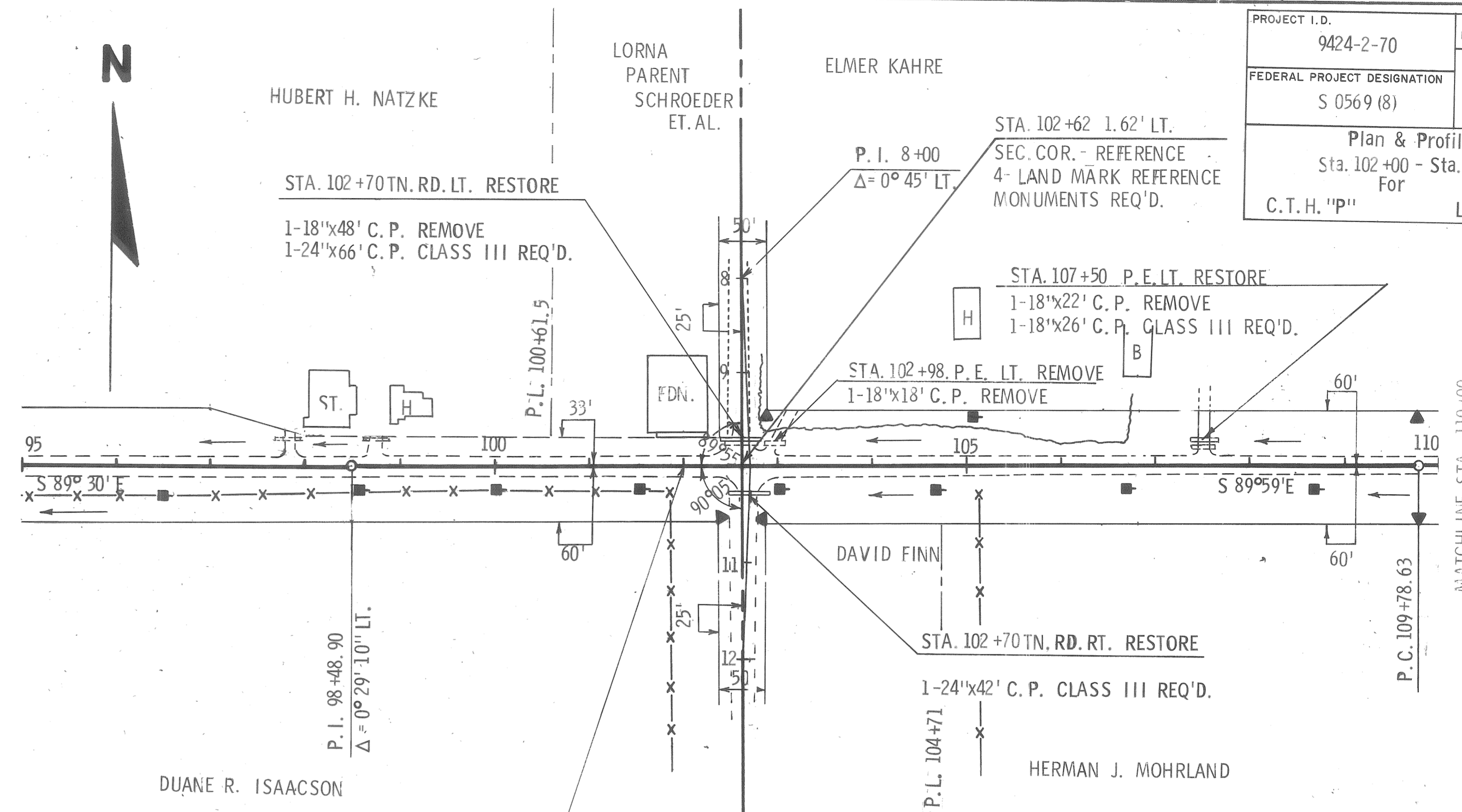
Conventional Signs

State Line . . . . .	Culverts in Place . . . . .
County Line . . . . .	Culverts Required . . . . .
Township or Range Line . . . . .	Drop Inlet . . . . .
Section Line . . . . .	Power Pole . . . . .
New Right of Way Line . . . . .	Telephone or Telegraph Pole . . . . .
Present Right of Way Line . . . . .	Right of Way Markers . . . . .
Wire Fence { Woven . . . . .	Reference Stake for Hubs Only . . . . .
{ Barbed . . . . .	Marsh . . . . .
Lot Line . . . . .	Hedge . . . . .
Corporate or City Limits . . . . .	Trees . . . . .
Property Line . . . . .	
Traveled Way or P. E. . . . .	Ground Elevation . . . . .
Railroads . . . . .	Grade Elevation . . . . .
Base or Survey Line . . . . .	

STATE OF WISCONSIN DEPARTMENT OF TRANSPORTATION DIVISION OF HIGHWAYS	
Supervisor: <u>J. R. W</u>	District Checker: <u>G. S. W</u>
Designer: <u>E. H. M</u>	C. O. Checker: _____
Correct: _____	
Date: _____	District Engineer
Recommended for Approval: _____	
Date: _____	Chief Design Engineer
Approved: _____	
Date: _____	State Highway Engineer
U. S. DEPARTMENT OF TRANSPORTATION FEDERAL HIGHWAY ADMINISTRATION BUREAU OF PUBLIC ROADS	
REGION 4 WISCONSIN DIVISION	
Approved: _____	
Date: _____	Division Engineer



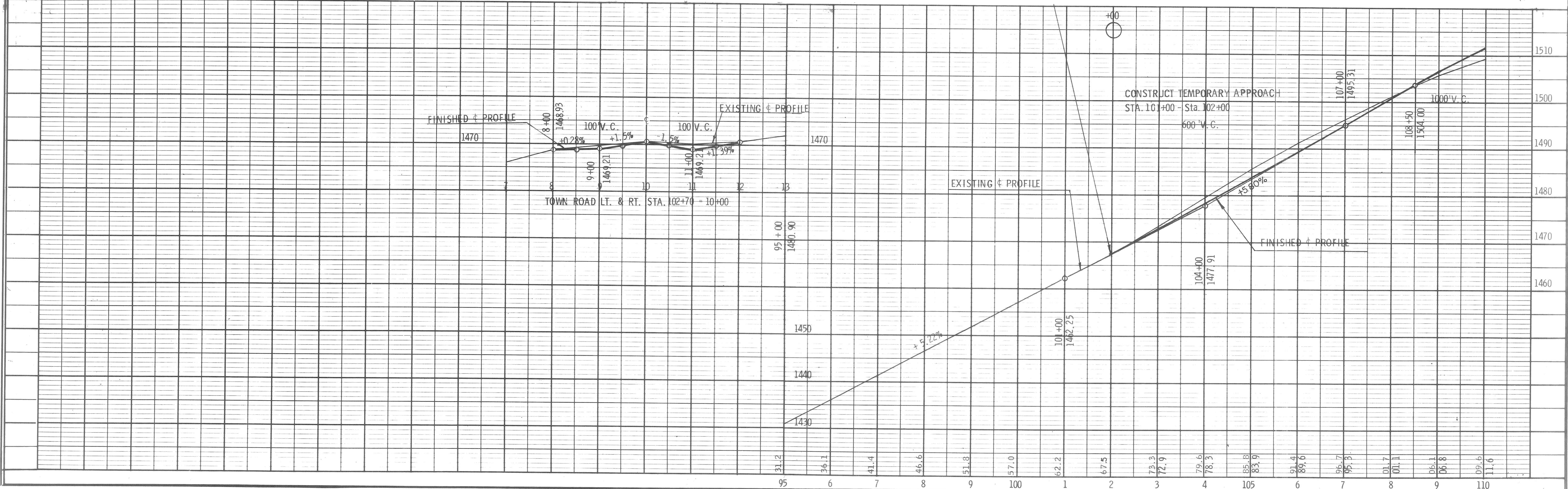
PROJECT I.D.	9424-2-70	SHEET NUMBER	TOTAL SHEETS
FEDERAL PROJECT DESIGNATION	S 0569 (8)		
Plan & Profile Sta. 102+00 - Sta. 110+00 For C.T.H. "P" Lincoln County			



BENCH MARKS

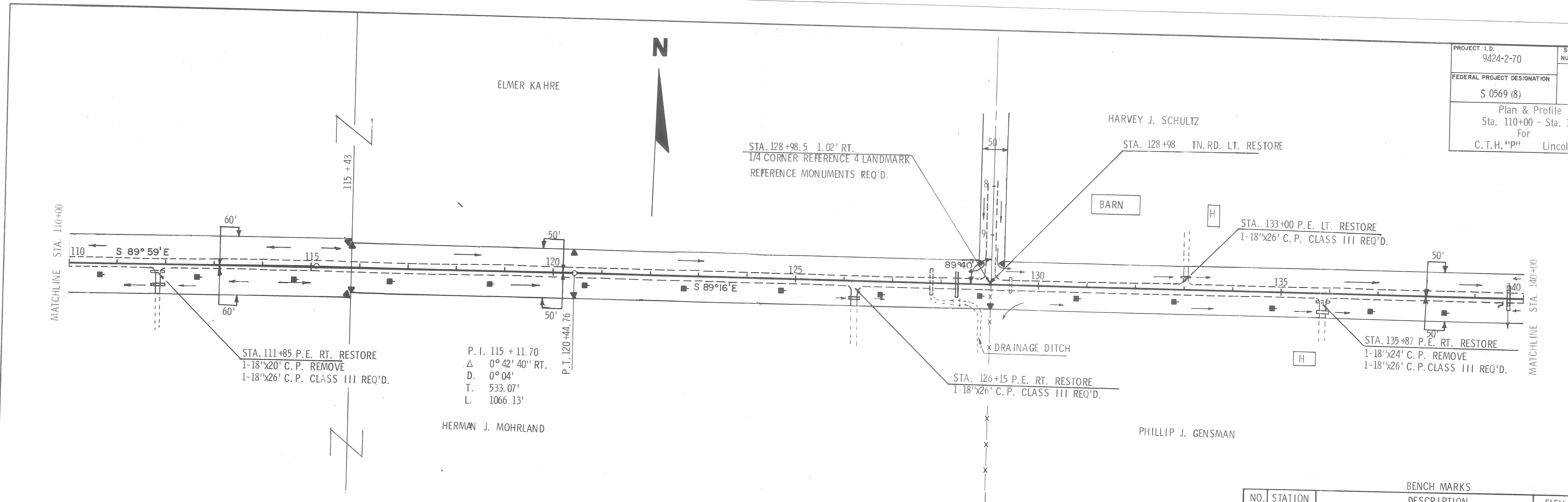
NO.	STATION	DESCRIPTION	ELEV.
10	93+30	SPIKE IN 6" NORWAY PINE 60' LT.	1419.99
11	101+00	SPIKE IN 18" POPPLE 35' LT.	1459.09
12	108+00	U.S. COAST & GEODETIC MARKER 20' LT.	1503.35

NET CENTERLINE LENGTH STA. 102+00 - STA. 110+00 = 800.00 LIN. FT.

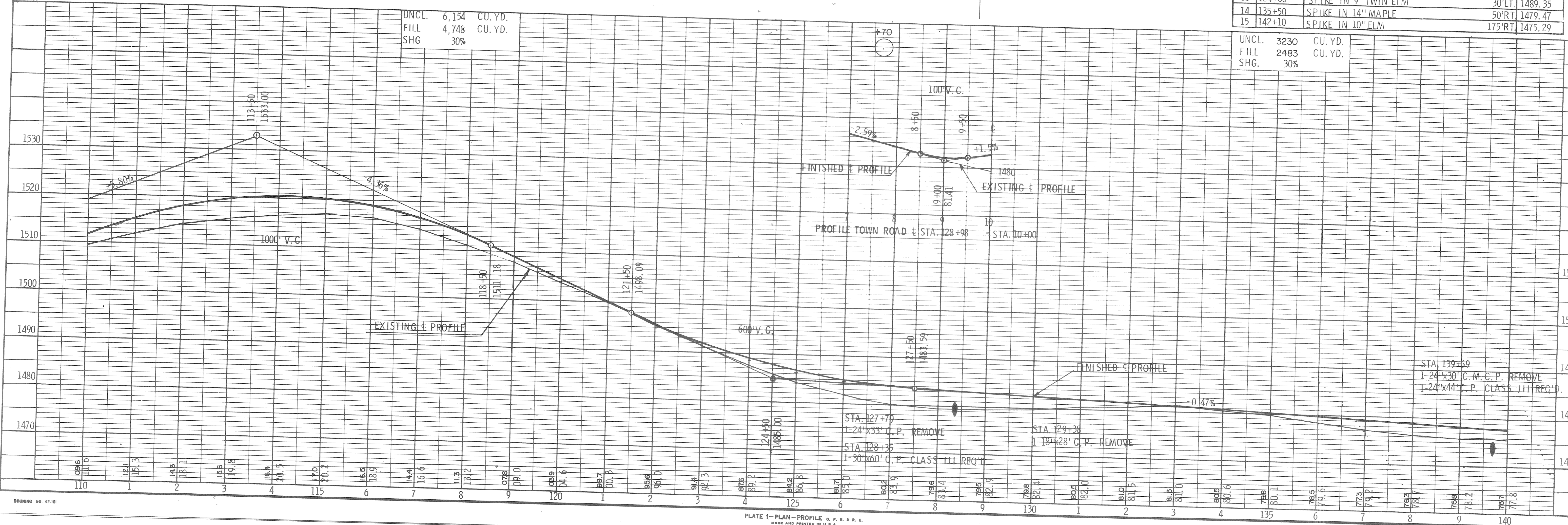




PROJECT I.D. 9424-2-70	SHEET NUMBER	TOTAL SHEETS
FEDERAL PROJECT DESIGNATION S 0569 (8)		
Plan & Profile Sta. 110+00 - Sta. 140+00 For C.T.H. "P" Lincoln County		



BENCH MARKS			
NO.	STATION	DESCRIPTION	ELEV.
12	108+00	U. S. COAST & GEODETIC MARKER	20'LT. 1503.35
13	124+00	SPIKE IN 9" TWIN ELM	30'LT. 1489.35
14	135+50	SPIKE IN 14" MAPLE	50'RT. 1479.47
15	142+10	SPIKE IN 10" ELM	175'RT. 1475.29

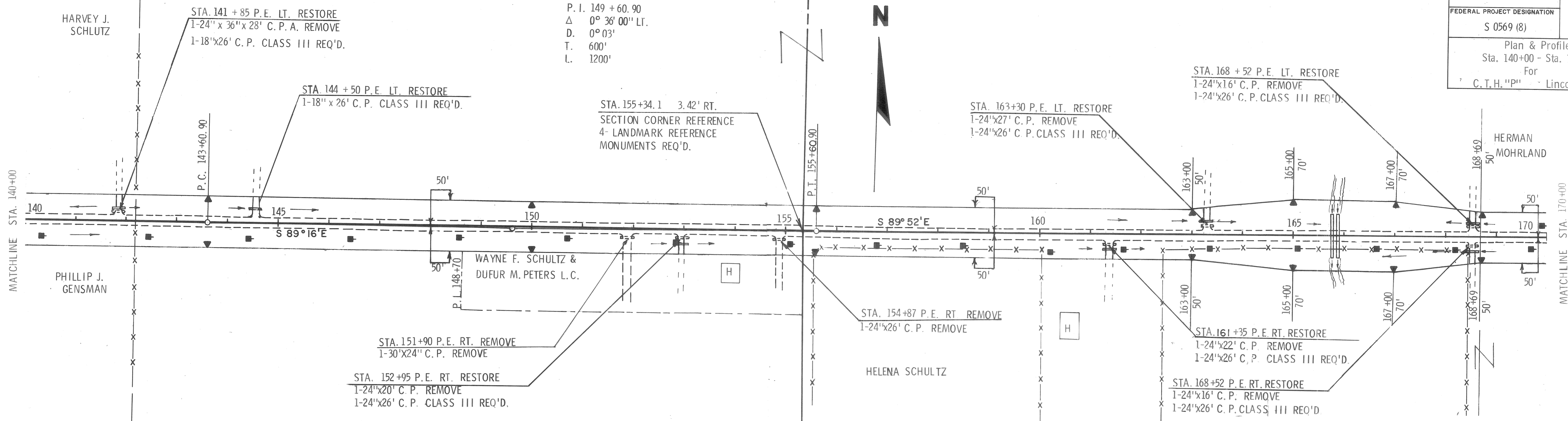




DAN BECKMAN & ROBERT BECKMAN & MARTIN LUECK L.C.

PROJECT I.D. 9424-2-70	SHEET NUMBER	TOTAL SHEETS
FEDERAL PROJECT DESIGNATION S 0569 (8)		
Plan & Profile Sta. 140+00 - Sta. 170+00 For C.T.H. "P" Lincoln County		

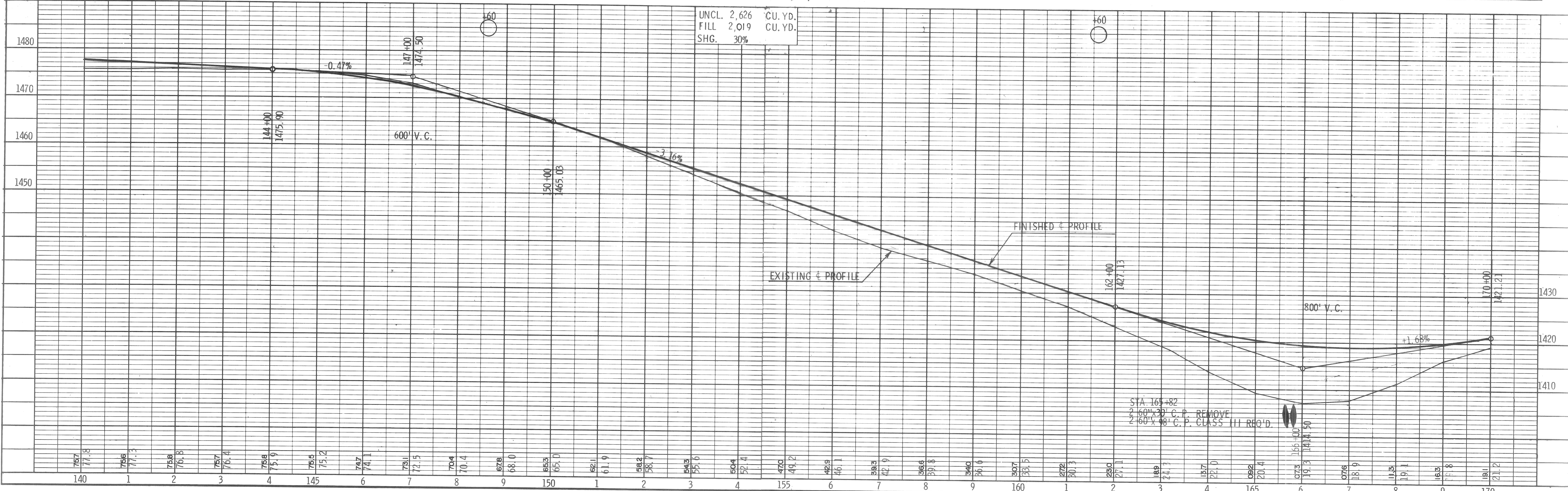
P. I. 149 + 60.90  
 $\Delta$  0° 36' 00" LT.  
 D. 0° 03'  
 T. 600'  
 L. 1200'



NET CENTERLINE LENGTH STA. 140+00 - STA. 170+00 = 3,000.00 LIN. FT.

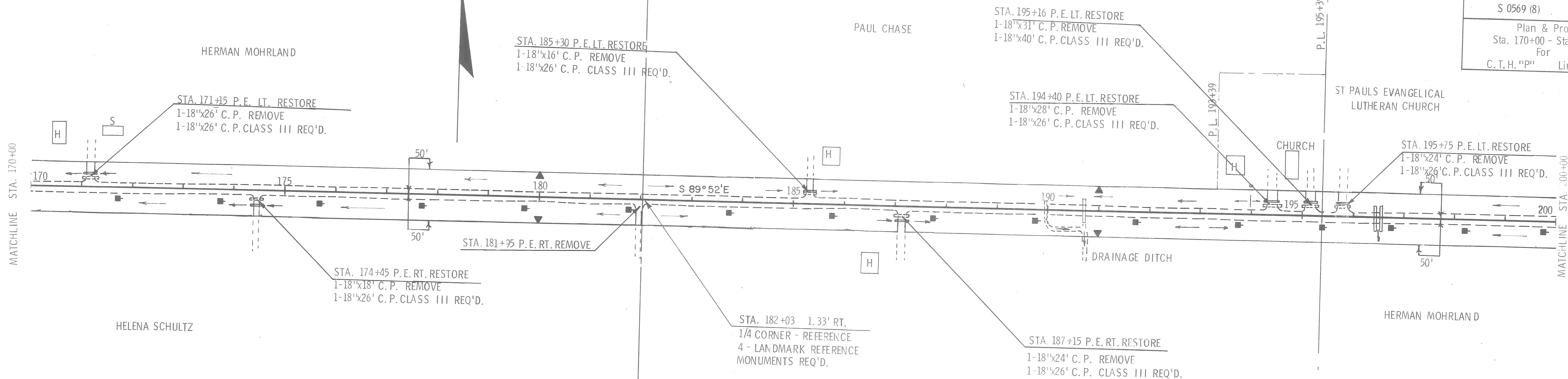
BENCH MARKS

NO.	STATION	DESCRIPTION	ELEV.
15	142+10	SPIKE IN 10" ELM	175'RT. 1475.29
16	153+80	SPIKE IN 18" SPRUCE	45'RT. 1455.29
17	160+15	SPIKE IN 8" WHITE PINE	45'RT. 1433.73
18	171+60	SPIKE IN 18" WHITE PINE	55'LT. 1426.86





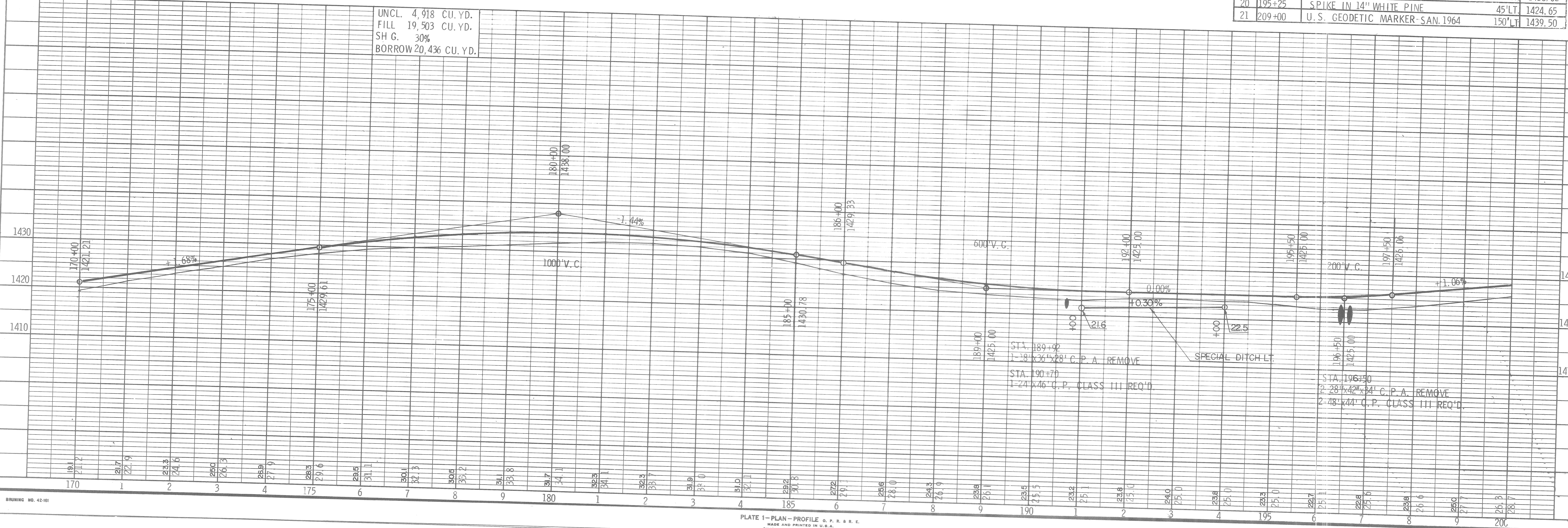
PROJECT I.D. 9424-2-70	SHEET NUMBER	TOTAL SHEETS
FEDERAL PROJECT DESIGNATION S 0569 (8)		
Plan & Profile Sta. 170+00 - Sta. 200+00 For C.T.H. "P" Lincoln County		



NET CENTERLINE LENGTH STA. 170+00 - STA. 200+00 = 3,000.00 LIN. FT.

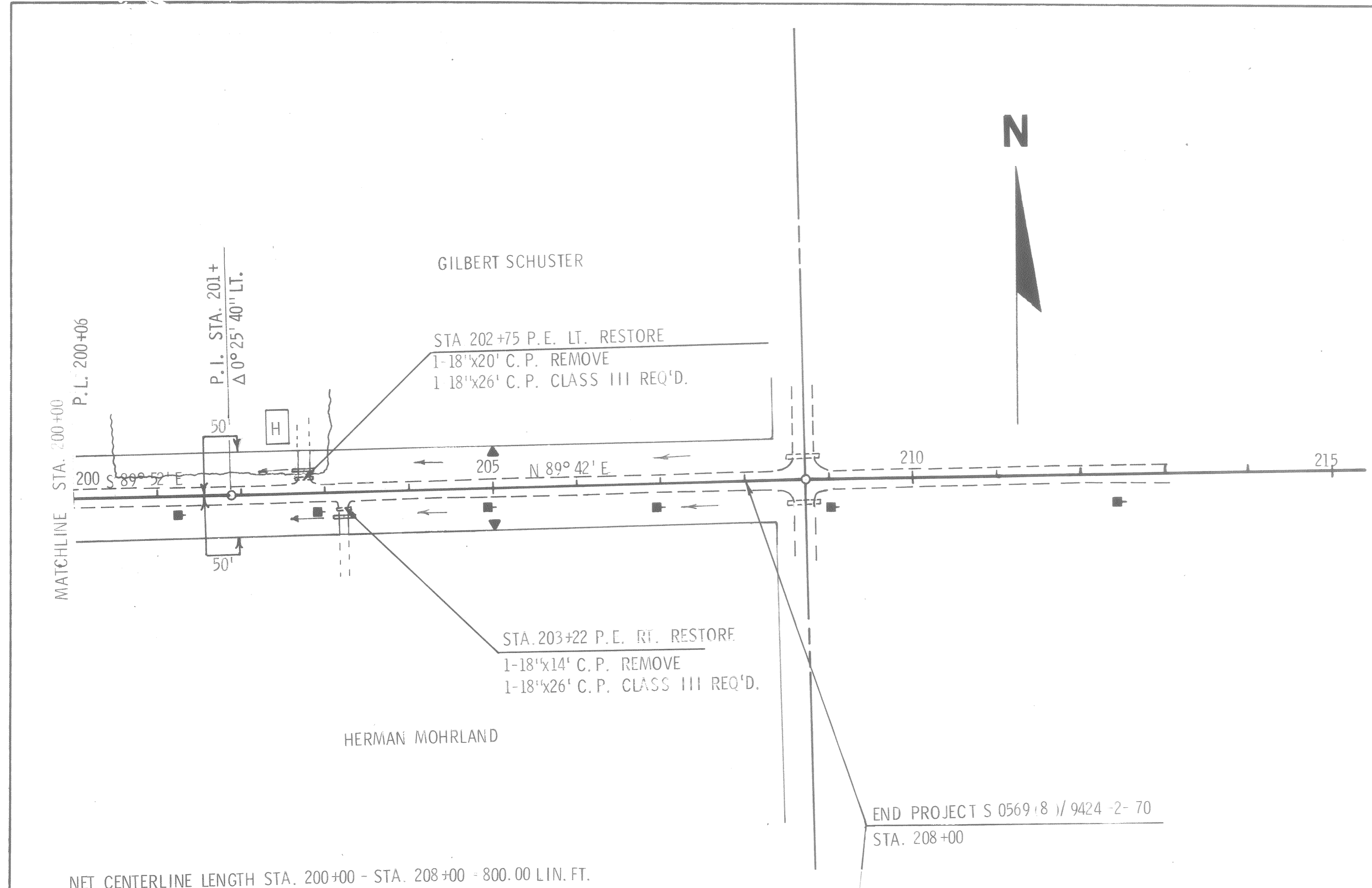
BENCH MARKS			
NO.	STATION	DESCRIPTION	ELEV.
18	171+60	SPIKE IN 18" WHITE PINE	55'LT. 1426.86
19	185+85	SPIKE IN 36" POPPLE	33'LT. 1428.62
20	195+25	SPIKE IN 14" WHITE PINE	45'LT. 1424.65
21	209+00	U.S. GEODETIC MARKER - SAN. 1964	150'LT. 1439.50

UNCL. 4,918 CU. YD.  
FILL 19,503 CU. YD.  
SH G. 30%  
BORROW 20,436 CU. YD.





PROJECT I.D. 9424-2-70	SHEET NUMBER	TOTAL SHEETS
FEDERAL PROJECT DESIGNATION S 0569 (8)		
Plan & Profile Sta. 200+00 - Sta. 208+00 For C.T.H. "P" Lincoln County		



BENCH MARKS				
NO.	STATION	DESCRIPTION	ELEV.	
20	195+25	SPIKE IN 14" WHITE PINE	45'LT.	1424.65
21	209+00	U. S. GEODETIC MARKER SAN. 1964	150'LT.	1439.50

