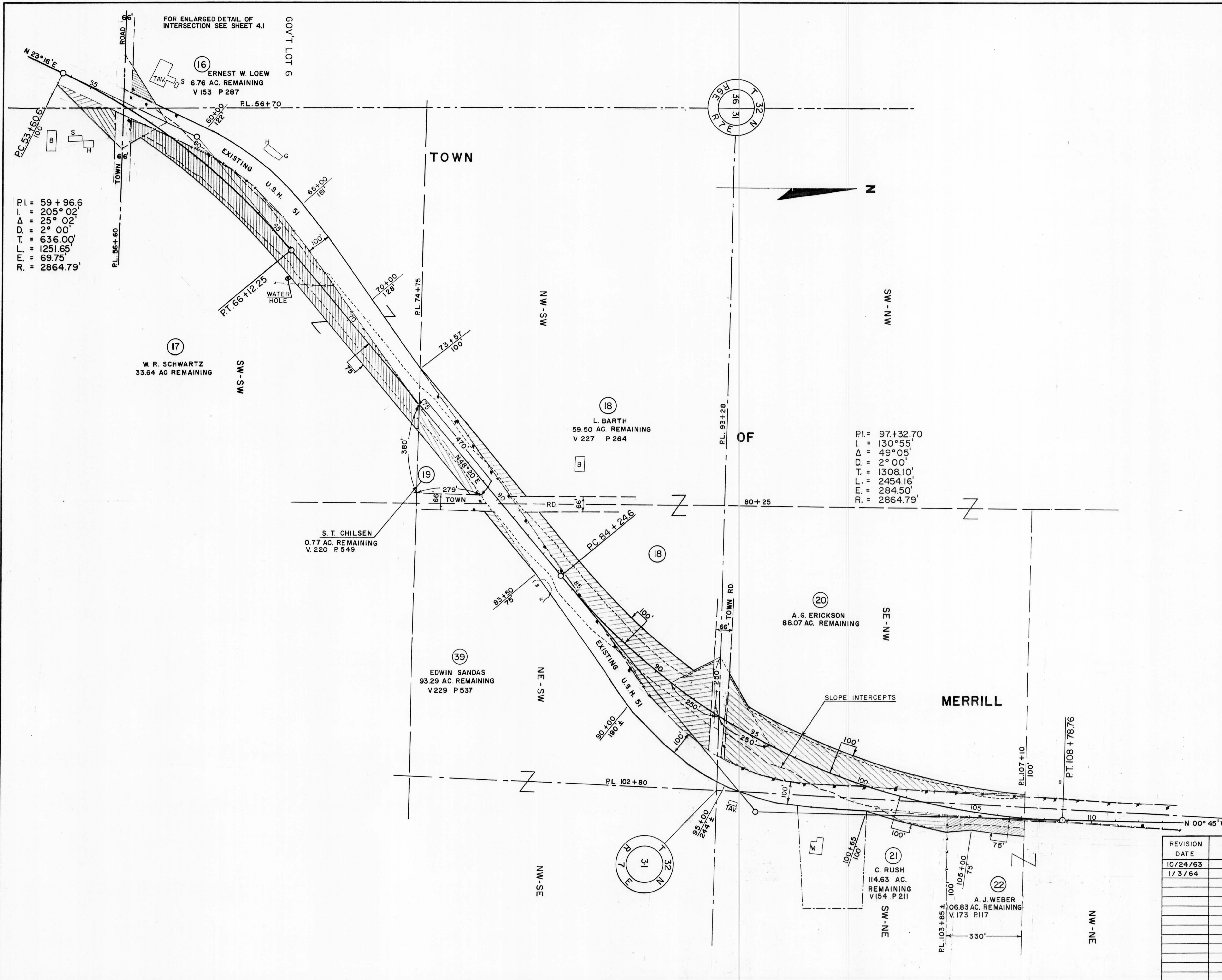


COUNTY AND HIGHWAY	ROUTE AND SECTION	CLASS AND AGREEMENT		FEDERAL DIVISION OFFICE	SHEET NUMBER	TOTAL SHEETS
		STATE	FEDERAL			
35.1	5.4		11.48	4	4.3	
CONST. PROJECT						



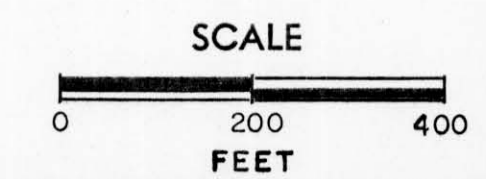
PI = 59+96.6  
 I = 205° 02'  
 Δ = 25° 02'  
 D = 2° 00'  
 T = 636.00'  
 L = 1251.65'  
 E = 69.75'  
 R = 2864.79'

PI = 97+32.70  
 I = 130° 55'  
 Δ = 49° 05'  
 D = 2° 00'  
 T = 1308.10'  
 L = 2454.16'  
 E = 284.50'  
 R = 2864.79'

NOTE  
BEARINGS SHOWN ON THIS PLAT ARE THE TRUE BEARINGS OF EACH TANGENT TO THE NEAREST MINUTE.

REVISION	DATE
	10/24/63
	1/3/64

STATE HIGHWAY COMMISSION OF WISCONSIN  
 PLAT OF RIGHT OF WAY REQUIRED  
 PROJECT F O 5-4 (48)



DATED JULY 12, 1963

RIGHT OF WAY STA. 56+60 - 107+10